

Converting Colors

Android(4293054419)

Have a look what the booklet for
Android(4293054419) contains.

Android(4293054419)	3
<i>Conversions</i>	4
<i>Details</i>	6
<i>Harmonies</i>	11
<i>Previews</i>	23
<i>Color Blindness Simulation</i>	26
<i>CSS Examples</i>	29

Color

Android(4293054419)

Conversions

Conversions Part 1

Format	Color
Hex	E2CFD3
RGB	226, 207, 211
RGB Percent	89%, 81%, 83%
CMY	0.1137, 0.1882, 0.1725
CMYK	0.00, 0.08, 0.07, 0.11
HSL	347°, 25%, 85%
HSV	347°, 8%, 89%
XYZ	65.4347, 65.4975, 70.8215
YIQ	213.1370, 10.0400, 5.2720

Conversions

Conversions Part 2

Format	Color
R _Y B	226, 207, 211
Decimal	14864339
CIE Lab	84.74, 7.27, 0.40
CIE LCh	85, 7.285, 3.164
Yxy	65.4975, 0.3243, 0.3246
Android (android.graphics.Color)	4293054419 (0xFFE2CFD3)
YUV	213.1370, -1.0535, 11.2809
Hunter-Lab	80.9306, 2.6940, 4.7673

Details

The Android color `4293054419` is a light color, and the websafe version is hex `CCCCCC`. A complement of this color would be `4291814110`, and the grayscale version is `4292203989`.

A 20% lighter version of the original color is `4294967295`, and `4289436061` is the 20% darker color. If you saturate the color by 10%, you get `4293048513`, and if you desaturate by 10%, it is `4293060325`.

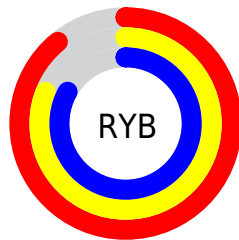
Distribution



Red (89%)

Green (81%)

Blue (83%)



Red (89%)

Yellow (81%)

Blue (83%)

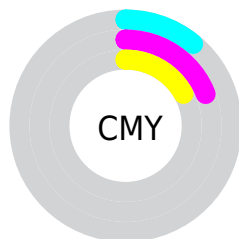


Cyan (0%)

Magenta (8%)

Yellow (7%)

Black (11%)



Cyan (11%)

Magenta (19%)

Yellow (17%)

Brightness & Saturation Gradients


These gradients show how the Android color 4293054419 changes by changing the brightness by 10 percent. The first figure shows a shift by +10% for each color and the second figure -10%.

Similar to the brightness gradients but the following saturation gradients show a change of the Android color 4293054419 by changing the saturation by 10% instead.

 4293054419

 4293054419

4294967295

 4291212215

 4289436061

 4287659906

 4285949545

 4284370513

 4282791738

 4281279013

 4279962640

 4278190080

 4293054419

 4293054419

 4293048513

 4293060325

 4293042863

 4293065975

 4293036957

 4293066751

 4293031308

 4293025402

 4293019496

 4293013846

 4293007940

 4293002290

Harmonies

Analogous

The Analogous color harmony consists of three colors that are next to each other on the color wheel.



4292727002



4293054419



4293119948

Triad

The Triadic color harmony groups three colors that are evenly spaced from another and form a triangle on the color wheel.



4293054419



4291941832



4291286752

Complementary

The Complementary color scheme is a pair of colors which are on the opposite of each other on the color wheel.



4293054419



4291814110

Split Complementary

Split-complementary colors differ from the complementary color scheme. The scheme consists of three colors, the original color and two neighbors of the complement color.



4291024859



4293054419



4291418061

Square

The Square scheme is like the rectangle color scheme, but the four colors are evenly spaced on the color wheel.



4293054419



4292465606



4291090644



4291744993

Rectangle

The Rectangle color scheme consists of four colors that form a rectangle on the color wheel.



4293054419



4292989129



4291090644



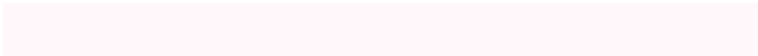
4291155934

Sweetspot

The Sweet Spot groups the original color and five complimentary colors.



4293054419



4294965241



4292792290



4286610043



4278190080



4286611584

Same Dimension

The Same Dimension uses a secret algorithm to generate beautiful new colors.



4293054419



4294960875



4293055695



4285556071



4289724453



4281335818

Inverse Universe

The Inverse Universe completely reimagines the original color for something new.



4293054419



4294960875



4291812834



4285556071



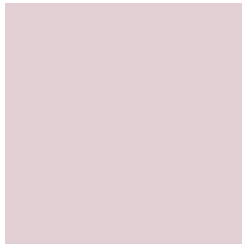
4289724453



4281335818

Previews

White Background



This preview shows how the Android color 4293054419 looks on a white background.

Color Contrast Check

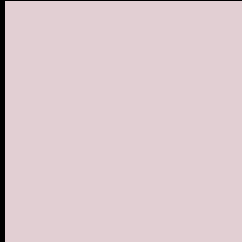
Large Text (above 18pt) WCAG AA × Fail

Any Text WCAG AA × Fail

Large Text (above 18pt) WCAG AAA × Fail

Any Text WCAG AAA × Fail

Black Background



This preview shows how the Android color 4293054419 looks on a black background.

Color Contrast Check

Large Text (above 18pt) WCAG AA ✓ Pass

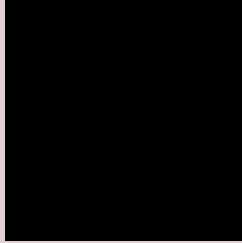
Any Text WCAG AA ✓ Pass

Large Text (above 18pt) WCAG AAA ✓ Pass

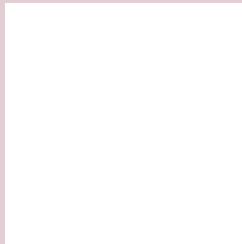
Any Text WCAG AAA ✓ Pass

If you want to check with other color combinations, try the [Color Contrast Checker](#).

Android 4293054419 Background



This preview shows how black text looks on a background with the Android color 4293054419.




This preview shows how white text looks on a background with the Android color 4293054419.

Color Blindness Simulation

Color vision deficiency is a very complex topic, and I could not describe the different causes any better than Wikipedia does, so if you want to learn more, you should check out their [article about color blindness](#).

Dichromacy

	Original Color 4293054419
	Protanopia 4292334549
	Deuteranopia 4293447123



Tritanopia
4293119453

Trichromacy



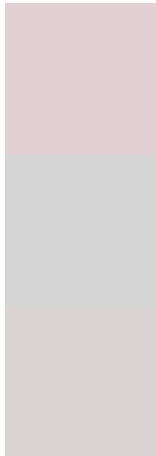
Original Color
4293054419

Protanomaly
4292596436

Deuteranomaly
4293316307

Tritanomaly
4293119705

Monochromacy



Original Color
4293054419

Achromatopsia
4292203989

Achromatomaly
4292531156

CSS Examples

Text

The CSS property to change the color of the text to Android 4293054419 is called "color". The color property can be set on classes, ids or directly on the HTML element.

This example shows how text in the color `rgb(226, 207, 211)` looks like.

```
.text, #text, p{  
    color:rgb(226, 207, 211)  
}
```

If you want to add a text shadow in that color use the text-shadow property, you can generate a text shadow directly with our [CSS Text Shadow Generator](#).

Here you see how black text with a 4 pixel rgb(226, 207, 211) colored shadow looks like.

```
.shadow{ text-shadow: 4px 4px 2px rgb(226, 207, 211) }
```

Border

The CSS property to change the border of an element to Android 4293054419 is called "border". The border property can be set on classes, ids or directly on the HTML element.

This example shows the color as border, it can be applied via the CSS property "border" or "border-color".

```
.border, #border, table{ border:4px solid rgb(226, 207, 211) }
```

If only the border color should be changed use the property `border-color`.

```
.border{ border-color:rgb(226, 207, 211) }
```

If you want to add a box shadow in that color use:

Here you see how a box with a 4 pixel `rgb(226, 207, 211)` colored shadow looks like.

```
.boxshadow{ -moz-box-shadow:4px 4px 4px  
4px rgb(226, 207, 211); -webkit-box-  
shadow:4px 4px 4px 4px rgb(226, 207, 211);  
box-shadow:4px 4px 4px 4px rgb(226, 207,  
211) }
```

Background

The CSS property to change the background color of an element to Android 4293054419 is called "background". The background property can be set on classes, ids or directly on the HTML element.

```
.background, #background, body{  
background: rgb(226, 207, 211) }
```

If only the background color should be changed can be used:

```
.background{ background-color: rgb(226,  
207, 211) }
```

This example shows the color as background, it is applied via the CSS property "background".

To optimize and compress your CSS code, you can use our [online CSS compressor and optimizer](#) based on csstidy. If you want to create a linear or radial gradient as background or border, check our [CSS Gradient Generator](#).

Hey! You found this booklet interesting? Support Converting Colors with the new Membership Option!

The pro membership hides all ads, plus gives you double the colors in the color bucket, and more awesome pro features!

[Learn more, Memberships starting at \\$2.50/m!](#)

**Follow me
on Twitter!**

@ConvertingColor