

Converting Colors

Android(4293076331)

Have a look what the booklet for
Android(4293076331) contains.

Android(4293076331)	3
<i>Conversions</i>	4
<i>Details</i>	6
<i>Harmonies</i>	11
<i>Previews</i>	23
<i>Color Blindness Simulation</i>	26
<i>CSS Examples</i>	29

Color

Android(4293076331)

Conversions

Conversions Part 1

Format	Color
Hex	E3256B
RGB	227, 37, 107
RGB Percent	89%, 15%, 42%
CMY	0.1098, 0.8549, 0.5804
CMYK	0.00, 0.84, 0.53, 0.11
HSL	338°, 77%, 52%
HSV	338°, 84%, 89%
XYZ	34.9940, 18.7156, 15.6780
YIQ	101.7900, 90.7700, 62.0500

Conversions

Conversions Part 2

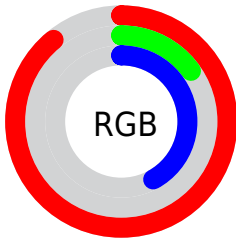
Format	Color
R_{YB}	227, 37, 107
Decimal	14886251
CIE _{Lab}	50.35, 72.36, 9.57
CIE _{LCh}	50, 72.989, 7.537
Yxy	18.7156, 0.5043, 0.2697
Android (android.graphics.Color)	4293076331 (0xFFE3256B)
YUV	101.7900, 2.5685, 109.8092
Hunter-Lab	43.2615, 68.6800, 8.7963

Details

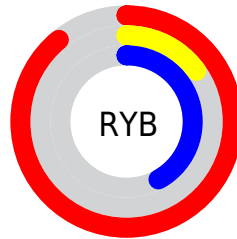
The Android color **4293076331** is a dark color, and the websafe version is hex **CC0066**, and the color name is **razzmatazz**. The color can be described as dark washed rose. A complement of this color would be **4280673181**, and the grayscale version is **4284900966**.

A 20% lighter version of the original color is **4294928798**, and **4289003580** is the 20% darker color. If you saturate the color by 10%, you get **4293070429**, and if you desaturate by 10%, it is **4293082233**.

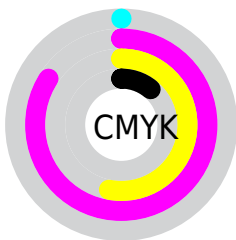
Distribution



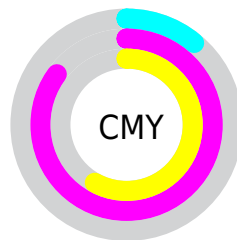
- Red (89%)
- Green (15%)
- Blue (42%)



- Red (89%)
- Yellow (15%)
- Blue (42%)



- Cyan (0%)
- Magenta (84%)
- Yellow (53%)
- Black (11%)



- Cyan (11%)
- Magenta (85%)
- Yellow (58%)

Brightness & Saturation Gradients

These gradients show how the Android color 4293076331 changes by changing the brightness by 10 percent. The first figure shows a shift by +10% for each color and the second figure -10%.

Similar to the brightness gradients but the following saturation gradients show a change of the Android color 4293076331 by changing the saturation by 10% instead.

 4293076331

 4293076331

4294967295

 4291035219

 4294928798

 4289003580

 4294936505

 4286971943

 4294943956

 4285005843

 4294951665

 4283105284

 4294959359

 4281008129

4294967039

 4278190080

 4293076331

 4293076331

 4293070429

 4293082233

■ 4293066836

■ 4293087880

■ 4293093782

■ 4293099684

■ 4293105331

■ 4293111233

■ 4293117135

■ 4293123038

■ 4293128684

Harmonies

Analogous

The Analogous color harmony consists of three colors that are next to each other on the color wheel.



4291574441



4293076331



4292428079

Triad

The Triadic color harmony groups three colors that are evenly spaced from another and form a triangle on the color wheel.



4293076331



4282222848



4278225899

Complementary

The Complementary color scheme is a pair of colors which are on the opposite of each other on the color wheel.



4293076331



4280673181

Split Complementary

Split-complementary colors differ from the complementary color scheme. The scheme consists of three colors, the original color and two neighbors of the complement color.



4278227651



4293076331



4278227013

Square

The Square scheme is like the rectangle color scheme, but the four colors are evenly spaced on the color wheel.



4293076331



4286806528



4278227846



4278221813

Rectangle

The Rectangle color scheme consists of four colors that form a rectangle on the color wheel.



4293076331



4291057664



4278227846



4278226657

Sweetspot

The Sweet Spot groups the original color and five complimentary colors.



4293076331



4294950871



4288292323



4286601575



4278190080



4286611584

Same Dimension

The Same Dimension uses a secret algorithm to generate beautiful new colors.



4293076331



4294901854



4293081893



4285753196



4289921090



4281532435

Inverse Universe

The Inverse Universe completely reimagines the original color for something new.



4293076331



4294901854



4280667619



4285753196



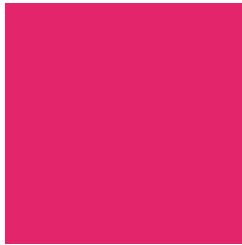
4289921090



4281532435

Previews

White Background



This preview shows how the Android color 4293076331 looks on a white background.

Color Contrast Check

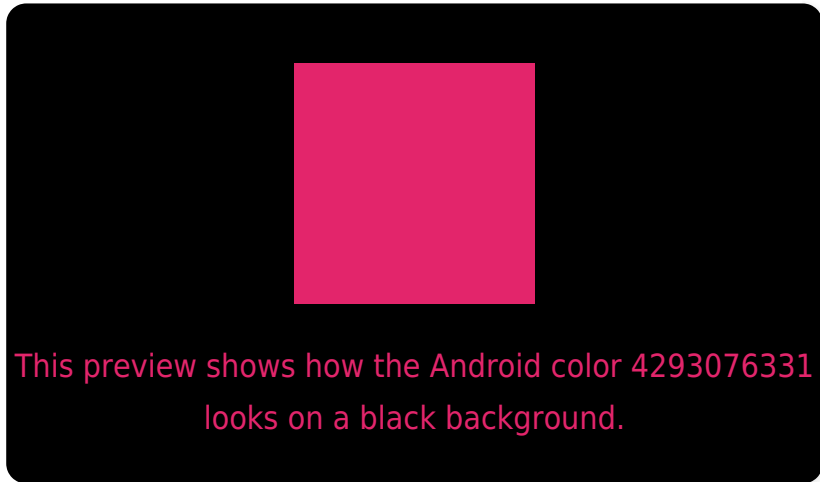
Large Text (above 18pt) WCAG AA ✓ Pass

Any Text WCAG AA ✗ Fail

Large Text (above 18pt) WCAG AAA ✗ Fail

Any Text WCAG AAA ✗ Fail

Black Background



Color Contrast Check

Large Text (above 18pt) WCAG AA ✓ Pass

Any Text WCAG AA ✓ Pass

Large Text (above 18pt) WCAG AAA ✓ Pass

Any Text WCAG AAA × Fail

If you want to check with other color combinations, try the [Color Contrast Checker](#).

Android 4293076331 Background



This preview shows how black text looks on a background with the Android color 4293076331.



This preview shows how white text looks on a background with the Android color 4293076331.

Color Blindness Simulation

Color vision deficiency is a very complex topic, and I could not describe the different causes any better than Wikipedia does, so if you want to learn more, you should check out their [article about color blindness](#).

Dichromacy

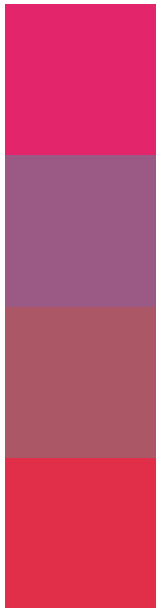


Original Color
4293076331

Protanopia
4285691797

Deuteranopia
4287394914

Trichromacy



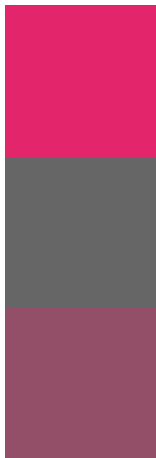
Original Color
4293076331

Protanomaly
4288371078

Deuteranomaly
4289484645

Tritanomaly
4293013321

Monochromacy



Original Color
4293076331

Achromatopsia
4284900966

Achromatomaly
4287843944

CSS Examples

Text

The CSS property to change the color of the text to Android 4293076331 is called "color". The color property can be set on classes, ids or directly on the HTML element.

This example shows how text in the color `rgb(227, 37, 107)` looks like.

```
.text, #text, p{  
    color:rgb(227, 37, 107)  
}
```

If you want to add a text shadow in that color use the text-shadow property, you can generate a text shadow directly with our [CSS Text Shadow Generator](#).

Here you see how black text with a 4 pixel rgb(227, 37, 107) colored shadow looks like.

```
.shadow{ text-shadow: 4px 4px 2px rgb(227, 37, 107) }
```

Border

The CSS property to change the border of an element to Android 4293076331 is called "border". The border property can be set on classes, ids or directly on the HTML element.

This example shows the color as border, it can be applied via the CSS property "border" or "border-color".

```
.border, #border, table{ border:4px solid rgb(227, 37, 107) }
```

If only the border color should be changed use the property `border-color`.

```
.border{ border-color:rgb(227, 37, 107) }
```

If you want to add a box shadow in that color use:

Here you see how a box with a 4 pixel `rgb(227, 37, 107)` colored shadow looks like.

```
.boxshadow{ -moz-box-shadow:4px 4px 4px 4px rgb(227, 37, 107); -webkit-box-shadow:4px 4px 4px 4px rgb(227, 37, 107); box-shadow:4px 4px 4px 4px rgb(227, 37, 107) }
```

Background

The CSS property to change the background color of an element to Android 4293076331 is called "background". The background property can be set on classes, ids or directly on the HTML element.

```
.background, #background, body{  
background: rgb(227, 37, 107) }
```

If only the background color should be changed can be used:

```
.background{ background-color: rgb(227, 37,  
107) }
```

This example shows the color as background, it is applied via the CSS property "background".

To optimize and compress your CSS code, you can use our [online CSS compressor and optimizer](#) based on csstidy. If you want to create a linear or radial gradient as background or border, check our [CSS Gradient Generator](#).

Hey! You found this booklet interesting? Support Converting Colors with the new Membership Option!

The pro membership hides all ads, plus gives you double the colors in the color bucket, and more awesome pro features!

[Learn more, Memberships starting at \\$2.50/m!](#)

**Follow me
on Twitter!**

@ConvertingColor