

Converting Colors

Android(4293081194)

Have a look what the booklet for
Android(4293081194) contains.

Android(4293081194)	3
<i>Conversions</i>	4
<i>Details</i>	6
<i>Harmonies</i>	11
<i>Previews</i>	23
<i>Color Blindness Simulation</i>	26
<i>CSS Examples</i>	29

Color

Android(4293081194)

Conversions

Conversions Part 1

Format	Color
Hex	E3386A
RGB	227, 56, 106
RGB Percent	89%, 22%, 42%
CMY	0.1098, 0.7804, 0.5843
CMYK	0.00, 0.75, 0.53, 0.11
HSL	342°, 75%, 55%
HSV	342°, 75%, 89%
XYZ	35.6942, 20.1998, 15.6533
YIQ	112.8290, 85.8660, 51.8020

Conversions

Conversions Part 2

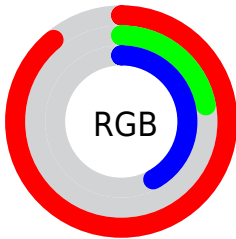
Format	Color
R_{YB}	227, 56, 106
Decimal	14891114
CIE _{Lab}	52.06, 67.36, 12.58
CIE _{LCh}	52, 68.528, 10.575
Yxy	20.1998, 0.4989, 0.2823
Android (android.graphics.Color)	4293081194 (0xFFE3386A)
YUV	112.8290, -3.3667, 100.1280
Hunter-Lab	44.9442, 63.1104, 10.8112

Details

The Android color **4293081194** is a dark color, and the websafe version is hex **CC3366**. The color can be described as dark washed rose. A complement of this color would be **4281918385**, and the grayscale version is **4285624689**.

A 20% lighter version of the original color is **4294931869**, and **4289003579** is the 20% darker color. If you saturate the color by 10%, you get **4293075290**, and if you desaturate by 10%, it is **4293087098**.

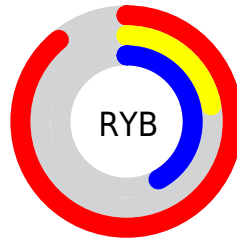
Distribution



Red (89%)

Green (22%)

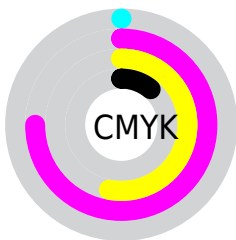
Blue (42%)



Red (89%)

Yellow (22%)

Blue (42%)

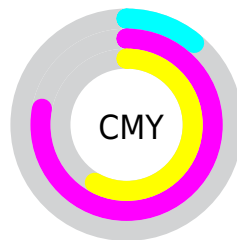


Cyan (0%)

Magenta (75%)

Yellow (53%)

Black (11%)



Cyan (11%)

Magenta (78%)

Yellow (58%)

Brightness & Saturation Gradients


These gradients show how the Android color 4293081194 changes by changing the brightness by 10 percent. The first figure shows a shift by +10% for each color and the second figure -10%.

Similar to the brightness gradients but the following saturation gradients show a change of the Android color 4293081194 by changing the saturation by 10% instead.

 4293081194

 4293081194

4294967295

 4291037778

 4294931869

 4289003579

 4294939320

 4287037478

 4294946771

 4285071378

 4294954480

 4283170819

 4294961919

 4281139201

 4278190080

 4293081194

 4293081194

 4293075290

 4293087098

 4293069642

 4293092746

 4293066818

 4293098650

 4293104554

 4293110202

 4293116106

 4293122010

 4293127915

 4293132283

Harmonies

Analogous

The Analogous color harmony consists of three colors that are next to each other on the color wheel.



4291838885



4293081194



4292300594

Triad

The Triadic color harmony groups three colors that are evenly spaced from another and form a triangle on the color wheel.



4293081194



4282354960



4278226411

Complementary

The Complementary color scheme is a pair of colors which are on the opposite of each other on the color wheel.



4293081194



4281918385

Split Complementary

Split-complementary colors differ from the complementary color scheme. The scheme consists of three colors, the original color and two neighbors of the complement color.



4278228424



4293081194



4278228051

Square

The Square scheme is like the rectangle color scheme, but the four colors are evenly spaced on the color wheel.



4293081194



4286808064



4278228624



4278222321

Rectangle

The Rectangle color scheme consists of four colors that form a rectangle on the color wheel.



4293081194



4290929156



4278228624



4278227427

Sweetspot

The Sweet Spot groups the original color and five complimentary colors.



4293081194



4294952149



4289738979



4286602342



4278190080



4286611584

Same Dimension

The Same Dimension uses a secret algorithm to generate beautiful new colors.



4293081194



4294908253



4293089848



4285753195



4289921076



4281532431

Inverse Universe

The Inverse Universe completely reimagines the original color for something new.



4293081194



4294908253



4281909731



4285753195



4289921076



4281532431

Previews

White Background



This preview shows how the Android color 4293081194 looks on a white background.

Color Contrast Check

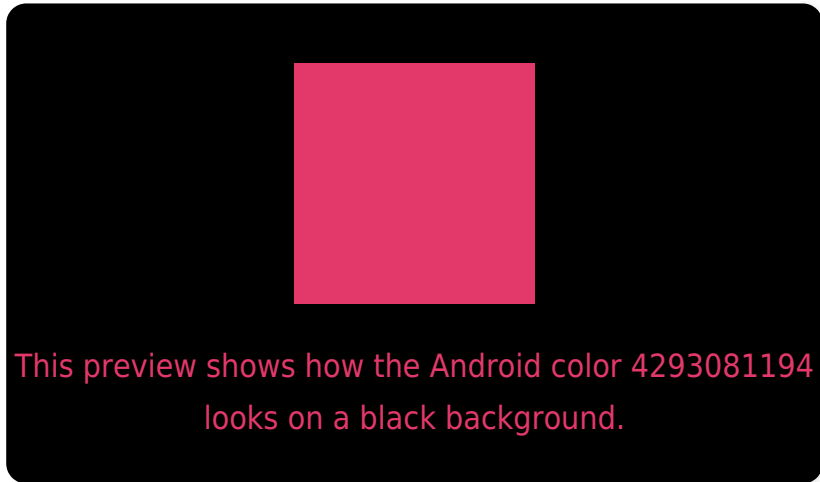
Large Text (above 18pt) WCAG AA ✓ Pass

Any Text WCAG AA ✗ Fail

Large Text (above 18pt) WCAG AAA ✗ Fail

Any Text WCAG AAA ✗ Fail

Black Background



Color Contrast Check

Large Text (above 18pt) WCAG AA ✓ Pass

Any Text WCAG AA ✓ Pass

Large Text (above 18pt) WCAG AAA ✓ Pass

Any Text WCAG AAA × Fail

If you want to check with other color combinations, try the [Color Contrast Checker](#).

Android 4293081194 Background



This preview shows how black text looks on a background with the Android color 4293081194.



This preview shows how white text looks on a background with the Android color 4293081194.

Color Blindness Simulation

Color vision deficiency is a very complex topic, and I could not describe the different causes any better than Wikipedia does, so if you want to learn more, you should check out their [article about color blindness](#).

Dichromacy

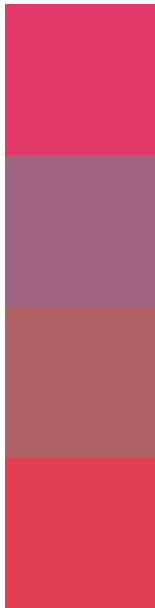


Original Color
4293081194

Protanopia
4286217357

Deuteranopia
4287789154

Trichromacy



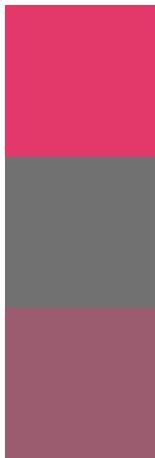
Original Color
4293081194

Protanomaly
4288701312

Deuteranomaly
4289683813

Tritanomaly
4293017170

Monochromacy



Original Color
4293081194

Achromatopsia
4285624689

Achromatomaly
4288306286

CSS Examples

Text

The CSS property to change the color of the text to Android 4293081194 is called "color". The color property can be set on classes, ids or directly on the HTML element.

This example shows how text in the color `rgb(227, 56, 106)` looks like.

```
.text, #text, p{  
    color:rgb(227, 56, 106)  
}
```

If you want to add a text shadow in that color use the text-shadow property, you can generate a text shadow directly with our [CSS Text Shadow Generator](#).

Here you see how black text with a 4 pixel rgb(227, 56, 106) colored shadow looks like.

```
.shadow{ text-shadow: 4px 4px 2px rgb(227, 56, 106) }
```

Border

The CSS property to change the border of an element to Android 4293081194 is called "border". The border property can be set on classes, ids or directly on the HTML element.

This example shows the color as border, it can be applied via the CSS property "border" or "border-color".

```
.border, #border, table{ border:4px solid rgb(227, 56, 106) }
```

If only the border color should be changed use the property border-color.

```
.border{ border-color:rgb(227, 56, 106) }
```

If you want to add a box shadow in that color use:

Here you see how a box with a 4 pixel rgb(227, 56, 106) colored shadow looks like.

```
.boxshadow{ -moz-box-shadow:4px 4px 4px  
4px rgb(227, 56, 106); -webkit-box-  
shadow:4px 4px 4px 4px rgb(227, 56, 106);  
box-shadow:4px 4px 4px 4px rgb(227, 56,  
106) }
```

Background

The CSS property to change the background color of an element to Android 4293081194 is called "background". The background property can be set on classes, ids or directly on the HTML element.

```
.background, #background, body{  
background: rgb(227, 56, 106) }
```

If only the background color should be changed can be used:

```
.background{ background-color: rgb(227, 56,  
106) }
```

This example shows the color as background, it is applied via the CSS property "background".

To optimize and compress your CSS code, you can use our [online CSS compressor and optimizer](#) based on csstidy. If you want to create a linear or radial gradient as background or border, check our [CSS Gradient Generator](#).

Hey! You found this booklet interesting? Support Converting Colors with the new Membership Option!

The pro membership hides all ads, plus gives you double the colors in the color bucket, and more awesome pro features!

[Learn more, Memberships starting at \\$2.50/m!](#)

**Follow me
on Twitter!**

@ConvertingColor