

# Converting Colors

Android(4293086832)

Have a look what the booklet for  
Android(4293086832) contains.

<b>Android(4293086832)</b> .....	3
<b><i>Conversions</i></b> .....	4
<b><i>Details</i></b> .....	6
<b><i>Harmonies</i></b> .....	11
<b><i>Previews</i></b> .....	23
<b><i>Color Blindness Simulation</i></b> .....	26
<b><i>CSS Examples</i></b> .....	29

# Color

**Android(4293086832)**

# Conversions

## Conversions Part 1

<b>Format</b>	<b>Color</b>
Hex	E34E70
RGB	227, 78, 112
RGB Percent	89%, 31%, 44%
CMY	0.1098, 0.6941, 0.5608
CMYK	0.00, 0.66, 0.51, 0.11
HSL	346°, 73%, 60%
HSV	346°, 66%, 89%
XYZ	37.3276, 22.9495, 17.7916
YIQ	126.4270, 77.8900, 42.1620

# Conversions

## Conversions Part 2

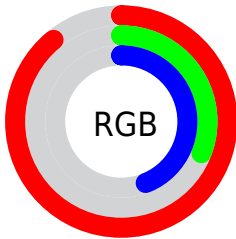
<b>Format</b>	<b>Color</b>
<b>R<sub>YB</sub></b>	227, 78, 112
Decimal	14896752
CIE <sub>Lab</sub>	55.02, 60.03, 13.11
CIE <sub>LCh</sub>	55, 61.449, 12.317
Yxy	22.9495, 0.4781, 0.2940
Android (android.graphics.Color)	4293086832 (0xFFE34E70)
YUV	126.4270, -7.1125, 88.2025
Hunter-Lab	47.9057, 55.2504, 11.5144

# Details

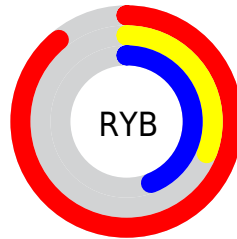
The Android color **4293086832** is a dark color, and the websafe version is hex **CC3366**. The color can be described as middle muted rose. A complement of this color would be **4283360193**, and the grayscale version is **4286479998**.

A 20% lighter version of the original color is **4294936483**, and **4289069377** is the 20% darker color. If you saturate the color by 10%, you get **4293080926**, and if you desaturate by 10%, it is **4293092738**.

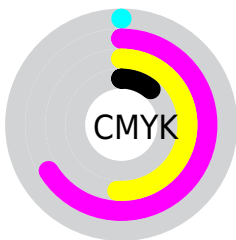
# Distribution



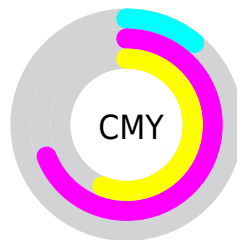
- Red (89%)
- Green (31%)
- Blue (44%)



- Red (89%)
- Yellow (31%)
- Blue (44%)



- Cyan (0%)
- Magenta (66%)
- Yellow (51%)
- Black (11%)



- Cyan (11%)
- Magenta (69%)
- Yellow (56%)

# Brightness & Saturation Gradients

These gradients show how the Android color 4293086832 changes by changing the brightness by 10 percent. The first figure shows a shift by +10% for each color and the second figure -10%.

Similar to the brightness gradients but the following saturation gradients show a change of the Android color 4293086832 by changing the saturation by 10% instead.



 4293086832

 4293086832

4294967295

 4291047512

 4294936483

 4289069377

 4294943678

 4287103019

 4294951130

 4285136919

 4294958583

 4283301889

 4294966271

 4281401346

 4278190080

 4293086832

 4293086832

 4293080926

 4293092738

 4293075277

 4293098387

 4293069371

 4293104293

 4293066804

 4293110198

 4293116104

 4293121753

 4293127659

 4293132284

 4293132287

# Harmonies

## Analogous

The Analogous color harmony consists of three colors that are next to each other on the color wheel.



4292039845



4293086832



4292304702

# Triad

The Triadic color harmony groups three colors that are evenly spaced from another and form a triangle on the color wheel.



4293086832



4283274285



4278227689

# Complementary

The Complementary color scheme is a pair of colors which are on the opposite of each other on the color wheel.



4293086832



4283360193

# Split Complementary

Split-complementary colors differ from the complementary color scheme. The scheme consists of three colors, the original color and two neighbors of the complement color.



4278229706



4293086832



4278229601

# Square

The Square scheme is like the rectangle color scheme, but the four colors are evenly spaced on the color wheel.



4293086832



4287203328



4278230169



4281762796

# Rectangle

The Rectangle color scheme consists of four colors that form a rectangle on the color wheel.



4293086832



4291063328



4278230169



4278228706



# Sweetspot

The Sweet Spot groups the original color and five complimentary colors.



4293086832



4294954200



4290793187



4286603624



4278190080



4286611584



# Same Dimension

The Same Dimension uses a secret algorithm to generate beautiful new colors.



4293086832



4294915684



4293097038



4285753194



4289921065



4281532428



# Inverse Universe

The Inverse Universe completely reimagines the original color for something new.



4293086832



4294915684



4283349987



4285753194



4289921065

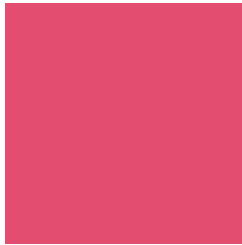


4281532428



# Previews

## White Background



This preview shows how the Android color 4293086832 looks on a white background.

## Color Contrast Check

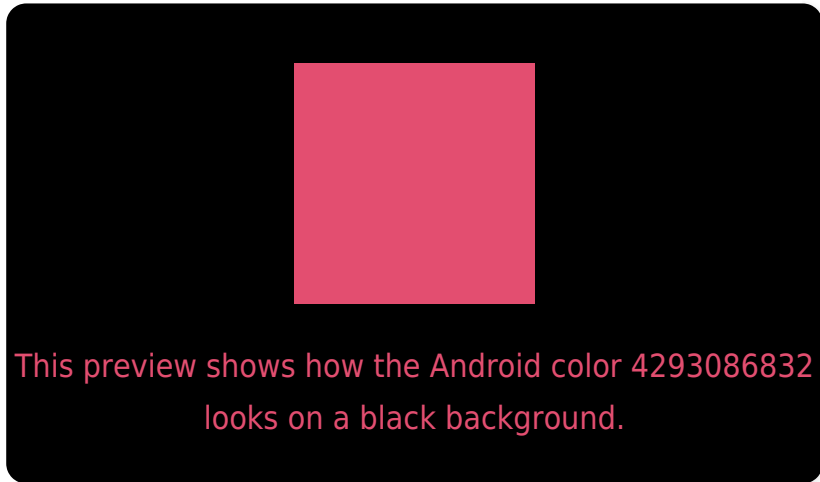
Large Text (above 18pt) WCAG AA ✓ Pass

Any Text WCAG AA ✗ Fail

Large Text (above 18pt) WCAG AAA ✗ Fail

Any Text WCAG AAA ✗ Fail

# Black Background



## Color Contrast Check

Large Text (above 18pt) WCAG AA ✓ Pass

Any Text WCAG AA ✓ Pass

Large Text (above 18pt) WCAG AAA ✓ Pass

Any Text WCAG AAA × Fail

If you want to check with other color combinations, try the [Color Contrast Checker](#).



# Android 4293086832 Background



This preview shows how black text looks on a background with the Android color 4293086832.



This preview shows how white text looks on a background with the Android color 4293086832.

# Color Blindness Simulation

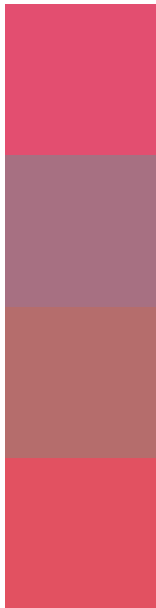
Color vision deficiency is a very complex topic, and I could not describe the different causes any better than Wikipedia does, so if you want to learn more, you should check out their [article about color blindness](#).

## Dichromacy





# Trichromacy



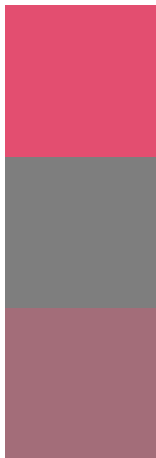
**Original Color**  
4293086832

**Protanomaly**  
4289163394

**Deuteranomaly**  
4290080108

**Tritanomaly**  
4293022049

# Monochromacy



**Original Color**  
4293086832

**Achromatopsia**  
4286479998

**Achromatomaly**  
4288900473

# CSS Examples

## Text

The CSS property to change the color of the text to Android 4293086832 is called "color". The color property can be set on classes, ids or directly on the HTML element.

This example shows how text in the color `rgb(227, 78, 112)` looks like.

```
.text, #text, p{  
    color:rgb(227, 78, 112)  
}
```

If you want to add a text shadow in that color use the text-shadow property, you can generate a text shadow directly with our [CSS Text Shadow Generator](#).

Here you see how black text with a 4 pixel rgb(227, 78, 112) colored shadow looks like.

```
.shadow{ text-shadow: 4px 4px 2px rgb(227, 78, 112) }
```

## Border

The CSS property to change the border of an element to Android 4293086832 is called "border". The border property can be set on classes, ids or directly on the HTML element.

This example shows the color as border, it can be applied via the CSS property "border" or "border-color".

```
.border, #border, table{ border:4px solid rgb(227, 78, 112) }
```

If only the border color should be changed use the property `border-color`.

```
.border{ border-color:rgb(227, 78, 112) }
```

If you want to add a box shadow in that color use:

Here you see how a box with a 4 pixel `rgb(227, 78, 112)` colored shadow looks like.

```
.boxshadow{ -moz-box-shadow:4px 4px 4px 4px rgb(227, 78, 112); -webkit-box-shadow:4px 4px 4px 4px rgb(227, 78, 112); box-shadow:4px 4px 4px 4px rgb(227, 78, 112) }
```

# Background

The CSS property to change the background color of an element to Android 4293086832 is called "background". The background property can be set on classes, ids or directly on the HTML element.

```
.background, #background, body{  
background: rgb(227, 78, 112) }
```

If only the background color should be changed can be used:

```
.background{ background-color: rgb(227, 78,  
112) }
```

This example shows the color as background, it is applied via the CSS property "background".

To optimize and compress your CSS code, you can use our [online CSS compressor and optimizer](#) based on csstidy. If you want to create a linear or radial gradient as background or border, check our [CSS Gradient Generator](#).



Hey! You found this booklet interesting? Support Converting Colors with the new Membership Option!

The pro membership hides all ads, plus gives you double the colors in the color bucket, and more awesome pro features!

**[Learn more, Memberships starting at \\$2.50/m!](#)**

**Follow me  
on Twitter!**

@ConvertingColor