

Converting Colors

Android(4293088896)

Have a look what the booklet for
Android(4293088896) contains.

Android(4293088896)	3
<i>Conversions</i>	4
<i>Details</i>	6
<i>Harmonies</i>	11
<i>Previews</i>	23
<i>Color Blindness Simulation</i>	26
<i>CSS Examples</i>	29

Color

Android(4293088896)

Conversions

Conversions Part 1

Format	Color
Hex	E35680
RGB	227, 86, 128
RGB Percent	89%, 34%, 50%
CMY	0.1098, 0.6627, 0.4980
CMYK	0.00, 0.62, 0.44, 0.11
HSL	342°, 72%, 61%
HSV	342°, 62%, 89%
XYZ	38.9026, 24.5450, 23.1093
YIQ	132.9470, 70.5540, 42.9540

Conversions

Conversions Part 2

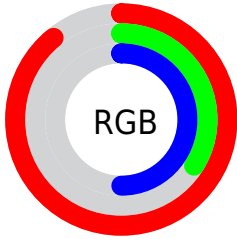
Format	Color
R _Y B	227, 86, 128
Decimal	14898816
CIE Lab	56.63, 58.18, 5.92
CIE LCh	57, 58.479, 5.814
Yxy	24.5450, 0.4494, 0.2836
Android (android.graphics.Color)	4293088896 (0xFFE35680)
YUV	132.9470, -2.4389, 82.4845
Hunter-Lab	49.5429, 53.4637, 7.0241

Details

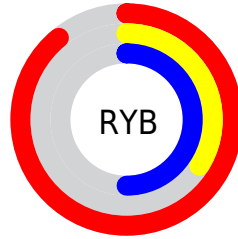
The Android color **4293088896** is a light color, and the websafe version is hex **FF6699**. The color can be described as light muted rose. A complement of this color would be **4283884473**, and the grayscale version is **4286940549**.

A 20% lighter version of the original color is **4294938293**, and **4289140303** is the 20% darker color. If you saturate the color by 10%, you get **4293082992**, and if you desaturate by 10%, it is **4293094800**.

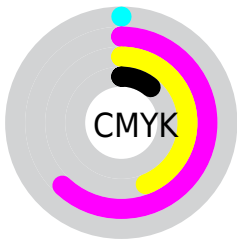
Distribution



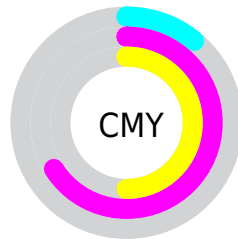
- Red (89%)
- Green (34%)
- Blue (50%)



- Red (89%)
- Yellow (34%)
- Blue (50%)



- Cyan (0%)
- Magenta (62%)
- Yellow (44%)
- Black (11%)



- Cyan (11%)
- Magenta (66%)
- Yellow (50%)

Brightness & Saturation Gradients

These gradients show how the Android color 4293088896 changes by changing the brightness by 10 percent. The first figure shows a shift by +10% for each color and the second figure -10%.

Similar to the brightness gradients but the following saturation gradients show a change of the Android color 4293088896 by changing the saturation by 10% instead.

 4293088896

 4293088896

4294967295

 4291115367

 4294938293

 4289140303

 4294945488

 4287168569

 4294952940

 4285268003

 4294960383

 4283432973

 4281663490

 4278255616

 4278190080

 4293088896

 4293088896

 4293082992

 4293094800

 4293077344

 4293100448

 4293071440

 4293106352

 4293066820

 4293112256

 4293118160

 4293123808

 4293129712

 4293132287

Harmonies

Analogous

The Analogous color harmony consists of three colors that are next to each other on the color wheel.



4291649715



4293088896



4292698447

Triad

The Triadic color harmony groups three colors that are evenly spaced from another and form a triangle on the color wheel.



4293088896



4284716590



4278229220

Complementary

The Complementary color scheme is a pair of colors which are on the opposite of each other on the color wheel.



4293088896



4283884473

Split Complementary

Split-complementary colors differ from the complementary color scheme. The scheme consists of three colors, the original color and two neighbors of the complement color.



4278230978



4293088896



4278230364

Square

The Square scheme is like the rectangle color scheme, but the four colors are evenly spaced on the color wheel.



4293088896



4288186641



4278231185



4279012078

Rectangle

The Rectangle color scheme consists of four colors that form a rectangle on the color wheel.



4293088896



4291653427



4278231185



4278229979

Sweetspot

The Sweet Spot groups the original color and five complimentary colors.



4293088896



4294954973



4290336483



4286603883



4278190080



4286611584

Same Dimension

The Same Dimension uses a secret algorithm to generate beautiful new colors.



4293088896



4294918265



4293096022



4285753195



4289921077



4281532431

Inverse Universe

The Inverse Universe completely reimagines the original color for something new.



4293088896



4294918265



4283877347



4285753195



4289921077



4281532431

Previews

White Background



This preview shows how the Android color 4293088896 looks on a white background.

Color Contrast Check

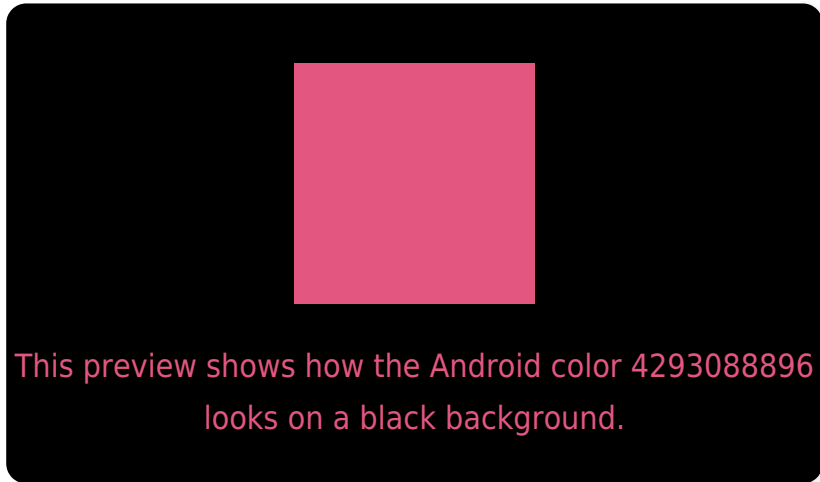
Large Text (above 18pt) WCAG AA ✓ Pass

Any Text WCAG AA ✗ Fail

Large Text (above 18pt) WCAG AAA ✗ Fail

Any Text WCAG AAA ✗ Fail

Black Background



Color Contrast Check

Large Text (above 18pt) WCAG AA ✓ Pass

Any Text WCAG AA ✓ Pass

Large Text (above 18pt) WCAG AAA ✓ Pass

Any Text WCAG AAA × Fail

If you want to check with other color combinations, try the [Color Contrast Checker](#).

Android 4293088896 Background



This preview shows how black text looks on a background with the Android color 4293088896.



This preview shows how white text looks on a background with the Android color 4293088896.

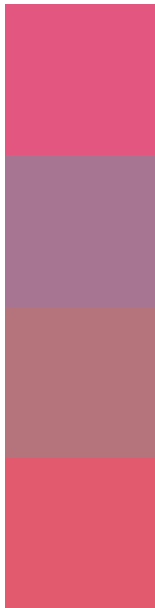
Color Blindness Simulation

Color vision deficiency is a very complex topic, and I could not describe the different causes any better than Wikipedia does, so if you want to learn more, you should check out their [article about color blindness](#).

Dichromacy



Trichromacy



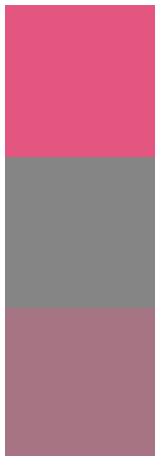
Original Color
4293088896

Protanomaly
4289164690

Deuteranomaly
4290081660

Tritanomaly
4293024365

Monochromacy



Original Color
4293088896

Achromatopsia
4286940549

Achromatomaly
4289164419

CSS Examples

Text

The CSS property to change the color of the text to Android 4293088896 is called "color". The color property can be set on classes, ids or directly on the HTML element.

This example shows how text in the color `rgb(227, 86, 128)` looks like.

```
.text, #text, p{  
    color:rgb(227, 86, 128)  
}
```

If you want to add a text shadow in that color use the text-shadow property, you can generate a text shadow directly with our [CSS Text Shadow Generator](#).

Here you see how black text with a 4 pixel rgb(227, 86, 128) colored shadow looks like.

```
.shadow{ text-shadow: 4px 4px 2px rgb(227, 86, 128) }
```

Border

The CSS property to change the border of an element to Android 4293088896 is called "border". The border property can be set on classes, ids or directly on the HTML element.

This example shows the color as border, it can be applied via the CSS property "border" or "border-color".

```
.border, #border, table{ border:4px solid rgb(227, 86, 128) }
```

If only the border color should be changed use the property `border-color`.

```
.border{ border-color:rgb(227, 86, 128) }
```

If you want to add a box shadow in that color use:

Here you see how a box with a 4 pixel `rgb(227, 86, 128)` colored shadow looks like.

```
.boxshadow{ -moz-box-shadow:4px 4px 4px  
4px rgb(227, 86, 128); -webkit-box-  
shadow:4px 4px 4px 4px rgb(227, 86, 128);  
box-shadow:4px 4px 4px 4px rgb(227, 86,  
128) }
```

Background

The CSS property to change the background color of an element to Android 4293088896 is called "background". The background property can be set on classes, ids or directly on the HTML element.

```
.background, #background, body{  
background: rgb(227, 86, 128) }
```

If only the background color should be changed can be used:

```
.background{ background-color: rgb(227, 86,  
128) }
```

This example shows the color as background, it is applied via the CSS property "background".

To optimize and compress your CSS code, you can use our [online CSS compressor and optimizer](#) based on csstidy. If you want to create a linear or radial gradient as background or border, check our [CSS Gradient Generator](#).

Hey! You found this booklet interesting? Support Converting Colors with the new Membership Option!

The pro membership hides all ads, plus gives you double the colors in the color bucket, and more awesome pro features!

[Learn more, Memberships starting at \\$2.50/m!](#)

**Follow me
on Twitter!**

@ConvertingColor