

Converting Colors

Android(4293100686)

Have a look what the booklet for
Android(4293100686) contains.

Android(4293100686)	3
<i>Conversions</i>	4
<i>Details</i>	6
<i>Harmonies</i>	11
<i>Previews</i>	23
<i>Color Blindness Simulation</i>	26
<i>CSS Examples</i>	29

Color

Android(4293100686)

Conversions

Conversions Part 1

Format	Color
Hex	E3848E
RGB	227, 132, 142
RGB Percent	89%, 52%, 56%
CMY	0.1098, 0.4824, 0.4431
CMYK	0.00, 0.42, 0.37, 0.11
HSL	354°, 63%, 70%
HSV	354°, 42%, 89%
XYZ	44.8123, 34.7864, 29.9438
YIQ	161.5450, 53.4100, 23.2500

Conversions

Conversions Part 2

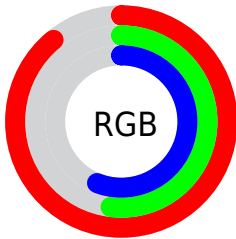
Format	Color
R _Y B	227, 132, 142
Decimal	14910606
CIE Lab	65.58, 37.51, 10.60
CIE LCh	66, 38.977, 15.778
Yxy	34.7864, 0.4091, 0.3176
Android (android.graphics.Color)	4293100686 (0xFFE3848E)
YUV	161.5450, -9.6357, 57.4040
Hunter-Lab	58.9800, 32.4071, 11.1849

Details

The Android color `4293100686` is a light color, and the websafe version is hex `FF9999`. A complement of this color would be `4286899161`, and the grayscale version is `4288848546`.

A 20% lighter version of the original color is `4294949572`, and `4289286236` is the 20% darker color. If you saturate the color by 10%, you get `4293094778`, and if you desaturate by 10%, it is `4293106594`.

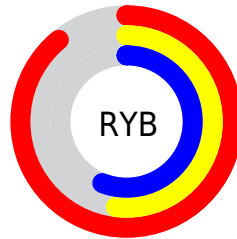
Distribution



Red (89%)

Green (52%)

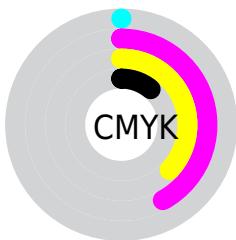
Blue (56%)



Red (89%)

Yellow (52%)

Blue (56%)

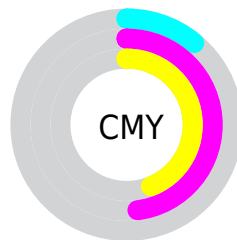


Cyan (0%)

Magenta (42%)

Yellow (37%)

Black (11%)



Cyan (11%)

Magenta (48%)

Yellow (44%)

Brightness & Saturation Gradients

These gradients show how the Android color 4293100686 changes by changing the brightness by 10 percent. The first figure shows a shift by +10% for each color and the second figure -10%.

Similar to the brightness gradients but the following saturation gradients show a change of the Android color 4293100686 by changing the saturation by 10% instead.

 4293100686

 4293100686

4294967295

 4291193460

 4294949572

 4289286236

 4294957024

 4287444804

 4294964220

 4285603374

 4283826202

 4282122240

 4280287233

 4278190080

 4293100686

 4293100686

 4293094778

 4293106594

 4293089125

 4293112247

 4293083217

 4293118155

 4293077309

 4293124063

 4293071656

 4293129972

 4293066776

 4293132287

Harmonies

Analogous

The Analogous color harmony consists of three colors that are next to each other on the color wheel.



4292445873



4293100686



4292578159

Triad

The Triadic color harmony groups three colors that are evenly spaced from another and form a triangle on the color wheel.



4293100686



4286360685



4283017442

Complementary

The Complementary color scheme is a pair of colors which are on the opposite of each other on the color wheel.



4293100686



4286899161

Split Complementary

Split-complementary colors differ from the complementary color scheme. The scheme consists of three colors, the original color and two neighbors of the complement color.



4278235088



4293100686



4283281805

Square

The Square scheme is like the rectangle color scheme, but the four colors are evenly spaced on the color wheel.



4293100686



4288914267



4278235825



4287274210

Rectangle

The Rectangle color scheme consists of four colors that form a rectangle on the color wheel.



4293100686



4291662688



4278235825



4281183198

Sweetspot

The Sweet Spot groups the original color and five complimentary colors.



4293100686



4294958817



4292379875



4286606189



4278190080



4286611584

Same Dimension

The Same Dimension uses a secret algorithm to generate beautiful new colors.



4293100686



4294934669



4293109892



4285753192



4289921043



4281532421

Inverse Universe

The Inverse Universe completely reimagines the original color for something new.



4293100686



4294934669



4286889955



4285753192



4289921043



4281532421

Previews

White Background



This preview shows how the Android color 4293100686 looks on a white background.

Color Contrast Check

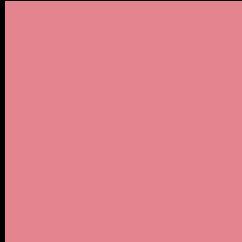
Large Text (above 18pt) WCAG AA × Fail

Any Text WCAG AA × Fail

Large Text (above 18pt) WCAG AAA × Fail

Any Text WCAG AAA × Fail

Black Background



This preview shows how the Android color 4293100686 looks on a black background.

Color Contrast Check

Large Text (above 18pt) WCAG AA ✓ Pass

Any Text WCAG AA ✓ Pass

Large Text (above 18pt) WCAG AAA ✓ Pass

Any Text WCAG AAA ✓ Pass

If you want to check with other color combinations, try the [Color Contrast Checker](#).

Android 4293100686 Background



This preview shows how black text looks on a background with the Android color 4293100686.




This preview shows how white text looks on a background with the Android color 4293100686.

Color Blindness Simulation

Color vision deficiency is a very complex topic, and I could not describe the different causes any better than Wikipedia does, so if you want to learn more, you should check out their [article about color blindness](#).

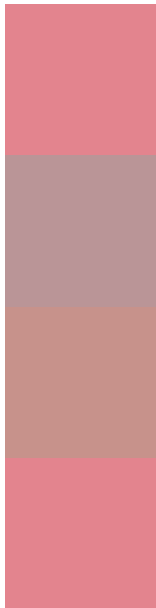
Dichromacy





Tritanopia
4293100686

Trichromacy



Original Color
4293100686

Protanomaly
4290418071

Deuteranomaly
4291269259

Tritanomaly
4293100686

Monochromacy



Original Color
4293100686

Achromatopsia
4288848546

Achromatomaly
4290418587

CSS Examples

Text

The CSS property to change the color of the text to Android 4293100686 is called "color". The color property can be set on classes, ids or directly on the HTML element.

This example shows how text in the color `rgb(227, 132, 142)` looks like.

```
.text, #text, p{  
    color:rgb(227, 132, 142)  
}
```

If you want to add a text shadow in that color use the text-shadow property, you can generate a text shadow directly with our [CSS Text Shadow Generator](#).

Here you see how black text with a 4 pixel rgb(227, 132, 142) colored shadow looks like.

```
.shadow{ text-shadow: 4px 4px 2px rgb(227, 132, 142) }
```

Border

The CSS property to change the border of an element to Android 4293100686 is called "border". The border property can be set on classes, ids or directly on the HTML element.

This example shows the color as border, it can be applied via the CSS property "border" or "border-color".

```
.border, #border, table{ border:4px solid rgb(227, 132, 142) }
```

If only the border color should be changed use the property `border-color`.

```
.border{ border-color:rgb(227, 132, 142) }
```

If you want to add a box shadow in that color use:

Here you see how a box with a 4 pixel `rgb(227, 132, 142)` colored shadow looks like.

```
.boxshadow{ -moz-box-shadow:4px 4px 4px  
4px rgb(227, 132, 142); -webkit-box-  
shadow:4px 4px 4px 4px rgb(227, 132, 142);  
box-shadow:4px 4px 4px 4px rgb(227, 132,  
142) }
```

Background

The CSS property to change the background color of an element to Android 4293100686 is called "background". The background property can be set on classes, ids or directly on the HTML element.

```
.background, #background, body{  
background: rgb(227, 132, 142) }
```

If only the background color should be changed can be used:

```
.background{ background-color: rgb(227,  
132, 142) }
```

This example shows the color as background, it is applied via the CSS property "background".

To optimize and compress your CSS code, you can use our [online CSS compressor and optimizer](#) based on csstidy. If you want to create a linear or radial gradient as background or border, check our [CSS Gradient Generator](#).

Hey! You found this booklet interesting? Support Converting Colors with the new Membership Option!

The pro membership hides all ads, plus gives you double the colors in the color bucket, and more awesome pro features!

[Learn more, Memberships starting at \\$2.50/m!](#)

**Follow me
on Twitter!**

@ConvertingColor