

Converting Colors

Android(4293100696)

Have a look what the booklet for
Android(4293100696) contains.

Android(4293100696)	3
<i>Conversions</i>	4
<i>Details</i>	6
<i>Harmonies</i>	11
<i>Previews</i>	23
<i>Color Blindness Simulation</i>	26
<i>CSS Examples</i>	29

Color

Android(4293100696)

Conversions

Conversions Part 1

Format	Color
Hex	E38498
RGB	227, 132, 152
RGB Percent	89%, 52%, 60%
CMY	0.1098, 0.4824, 0.4039
CMYK	0.00, 0.42, 0.33, 0.11
HSL	347°, 63%, 70%
HSV	347°, 42%, 89%
XYZ	45.5973, 35.1004, 34.0776
YIQ	162.6850, 50.2000, 26.3600

Conversions

Conversions Part 2

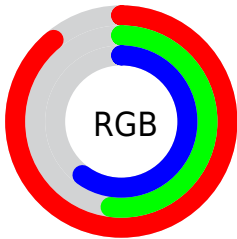
Format	Color
RYB	227, 132, 152
Decimal	14910616
CIELab	65.83, 38.71, 5.29
CIELCh	66, 39.073, 7.783
Yxy	35.1004, 0.3973, 0.3058
Android (android.graphics.Color)	4293100696 (0xFFE38498)
YUV	162.6850, -5.2677, 56.4043
Hunter-Lab	59.2456, 33.6995, 7.3688

Details

The Android color **4293100696** is a light color, and the websafe version is hex **FF9999**. A complement of this color would be **4286899151**, and the grayscale version is **4288914339**.

A 20% lighter version of the original color is **4294949838**, and **4289286245** is the 20% darker color. If you saturate the color by 10%, you get **4293094790**, and if you desaturate by 10%, it is **4293106602**.

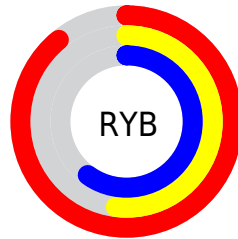
Distribution



Red (89%)

Green (52%)

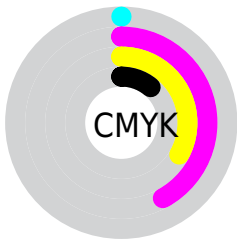
Blue (60%)



Red (89%)

Yellow (52%)

Blue (60%)

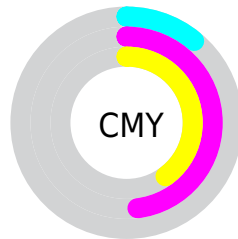


Cyan (0%)

Magenta (42%)

Yellow (33%)

Black (11%)



Cyan (11%)

Magenta (48%)

Yellow (40%)

Brightness & Saturation Gradients


These gradients show how the Android color 4293100696 changes by changing the brightness by 10 percent. The first figure shows a shift by +10% for each color and the second figure -10%.

Similar to the brightness gradients but the following saturation gradients show a change of the Android color 4293100696 by changing the saturation by 10% instead.

 4293100696

 4293100696

4294967295

 4291193470

 4294949838

 4289286245

 4294957034

 4287444813

 4294964479

 4285603127

 4283826210

 4282187787

 4280418305

 4278190080

 4293100696

 4293100696

 4293094790

 4293106602

 4293089140

 4293112252

 4293083234

 4293118158

 4293077328

 4293124064

 4293071678

 4293129970

 4293066800

 4293132287

Harmonies

Analogous

The Analogous color harmony consists of three colors that are next to each other on the color wheel.



4292053179



4293100696



4292905335

Triad

The Triadic color harmony groups three colors that are evenly spaced from another and form a triangle on the color wheel.



4293100696



4287146599



4281576416

Complementary

The Complementary color scheme is a pair of colors which are on the opposite of each other on the color wheel.



4293100696



4286899151

Split Complementary

Split-complementary colors differ from the complementary color scheme. The scheme consists of three colors, the original color and two neighbors of the complement color.



4278235594



4293100696



4284199044

Square

The Square scheme is like the rectangle color scheme, but the four colors are evenly spaced on the color wheel.



4293100696



4289634649



4279940008



4286292197

Rectangle

The Rectangle color scheme consists of four colors that form a rectangle on the color wheel.



4293100696



4292120934



4279940008



4278824410

Sweetspot

The Sweet Spot groups the original color and five complimentary colors.



4293100696



4294958821



4291724515



4286606191



4278190080



4286611584

Same Dimension

The Same Dimension uses a secret algorithm to generate beautiful new colors.



4293100696



4294934682



4293107588



4285753194



4289921062



4281532427

Inverse Universe

The Inverse Universe completely reimagines the original color for something new.



4293100696



4294934682



4286892259



4285753194



4289921062



4281532427

Previews

White Background



This preview shows how the Android color 4293100696 looks on a white background.

Color Contrast Check

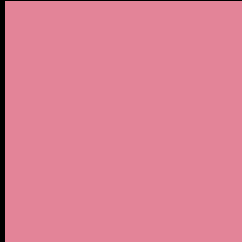
Large Text (above 18pt) WCAG AA × Fail

Any Text WCAG AA × Fail

Large Text (above 18pt) WCAG AAA × Fail

Any Text WCAG AAA × Fail

Black Background



This preview shows how the Android color 4293100696 looks on a black background.

Color Contrast Check

Large Text (above 18pt) WCAG AA ✓ Pass

Any Text WCAG AA ✓ Pass

Large Text (above 18pt) WCAG AAA ✓ Pass

Any Text WCAG AAA ✓ Pass

If you want to check with other color combinations, try the [Color Contrast Checker](#).

Android 4293100696 Background



This preview shows how black text looks on a background with the Android color 4293100696.



This preview shows how white text looks on a background with the Android color 4293100696.

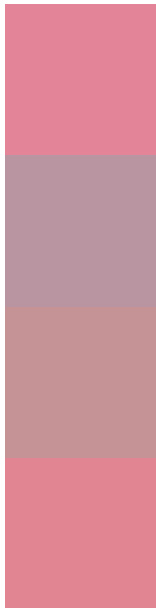
Color Blindness Simulation

Color vision deficiency is a very complex topic, and I could not describe the different causes any better than Wikipedia does, so if you want to learn more, you should check out their [article about color blindness](#).

Dichromacy



Trichromacy



Original Color
4293100696

Protanomaly
4290352546

Deuteranomaly
4291138453

Tritanomaly
4293035410

Monochromacy



Original Color
4293100696

Achromatopsia
4288914339

Achromatomaly
4290418847

CSS Examples

Text

The CSS property to change the color of the text to Android 4293100696 is called "color". The color property can be set on classes, ids or directly on the HTML element.

This example shows how text in the color `rgb(227, 132, 152)` looks like.

```
.text, #text, p{  
    color:rgb(227, 132, 152)  
}
```

If you want to add a text shadow in that color use the text-shadow property, you can generate a text shadow directly with our [CSS Text Shadow Generator](#).

Here you see how black text with a 4 pixel rgb(227, 132, 152) colored shadow looks like.

```
.shadow{ text-shadow: 4px 4px 2px rgb(227, 132, 152) }
```

Border

The CSS property to change the border of an element to Android 4293100696 is called "border". The border property can be set on classes, ids or directly on the HTML element.

This example shows the color as border, it can be applied via the CSS property "border" or "border-color".

```
.border, #border, table{ border:4px solid rgb(227, 132, 152) }
```

If only the border color should be changed use the property `border-color`.

```
.border{ border-color:rgb(227, 132, 152) }
```

If you want to add a box shadow in that color use:

Here you see how a box with a 4 pixel `rgb(227, 132, 152)` colored shadow looks like.

```
.boxshadow{ -moz-box-shadow:4px 4px 4px  
4px rgb(227, 132, 152); -webkit-box-  
shadow:4px 4px 4px 4px rgb(227, 132, 152);  
box-shadow:4px 4px 4px 4px rgb(227, 132,  
152) }
```

Background

The CSS property to change the background color of an element to Android 4293100696 is called "background". The background property can be set on classes, ids or directly on the HTML element.

```
.background, #background, body{  
background: rgb(227, 132, 152) }
```

If only the background color should be changed can be used:

```
.background{ background-color: rgb(227,  
132, 152) }
```

This example shows the color as background, it is applied via the CSS property "background".

To optimize and compress your CSS code, you can use our [online CSS compressor and optimizer](#) based on csstidy. If you want to create a linear or radial gradient as background or border, check our [CSS Gradient Generator](#).

Hey! You found this booklet interesting? Support Converting Colors with the new Membership Option!

The pro membership hides all ads, plus gives you double the colors in the color bucket, and more awesome pro features!

[Learn more, Memberships starting at \\$2.50/m!](#)

**Follow me
on Twitter!**

@ConvertingColor