

Converting Colors

Android(4293101735)

Have a look what the booklet for
Android(4293101735) contains.

Android(4293101735)	3
<i>Conversions</i>	4
<i>Details</i>	6
<i>Harmonies</i>	11
<i>Previews</i>	23
<i>Color Blindness Simulation</i>	26
<i>CSS Examples</i>	29

Color

Android(4293101735)

Conversions

Conversions Part 1

Format	Color
Hex	E388A7
RGB	227, 136, 167
RGB Percent	89%, 53%, 65%
CMY	0.1098, 0.4667, 0.3451
CMYK	0.00, 0.40, 0.26, 0.11
HSL	340°, 62%, 71%
HSV	340°, 40%, 89%
XYZ	47.4578, 36.7292, 41.1474
YIQ	166.7430, 44.2850, 28.9330

Conversions

Conversions Part 2

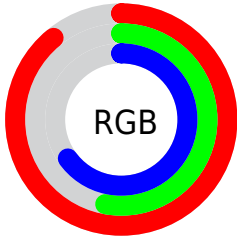
Format	Color
R _Y B	227, 136, 167
Decimal	14911655
CIE Lab	67.07, 38.59, -1.37
CIE LCh	67, 38.616, 357.972
Yxy	36.7292, 0.3786, 0.2930
Android (android.graphics.Color)	4293101735 (0xFFE388A7)
YUV	166.7430, 0.1267, 52.8454
Hunter-Lab	60.6046, 33.7201, 2.1685

Details

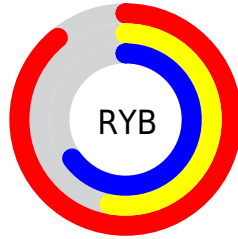
The Android color `4293101735` is a light color, and the websafe version is hex `FF99CC`. A complement of this color would be `4287161284`, and the grayscale version is `4289177511`.

A 20% lighter version of the original color is `4294950878`, and `4289352819` is the 20% darker color. If you saturate the color by 10%, you get `4293095832`, and if you desaturate by 10%, it is `4293107638`.

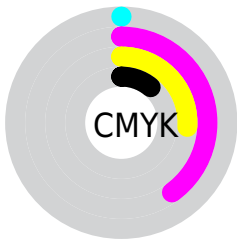
Distribution



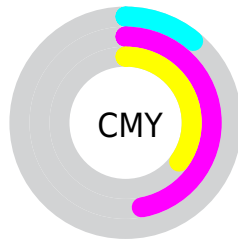
- Red (89%)
- Green (53%)
- Blue (65%)



- Red (89%)
- Yellow (53%)
- Blue (65%)



- Cyan (0%)
- Magenta (40%)
- Yellow (26%)
- Black (11%)



- Cyan (11%)
- Magenta (47%)
- Yellow (35%)

Brightness & Saturation Gradients


These gradients show how the Android color 4293101735 changes by changing the brightness by 10 percent. The first figure shows a shift by +10% for each color and the second figure -10%.

Similar to the brightness gradients but the following saturation gradients show a change of the Android color 4293101735 by changing the saturation by 10% instead.

 4293101735

 4293101735

4294967295

 4291194509

 4294950878

 4289352819

 4294958075

 4287511387

 4294965503

 4285669699

 4283958061

 4282253337

 4280745985

 4278190080

 4293101735

 4293101735

 4293095832

 4293107638

 4293090185

 4293113285

 4293084282

 4293119188

 4293078379

 4293125091

 4293072476

 4293130994

 4293066829

 4293132287

Harmonies

Analogous

The Analogous color harmony consists of three colors that are next to each other on the color wheel.



4291661769



4293101735



4293298820

Triad

The Triadic color harmony groups three colors that are evenly spaced from another and form a triangle on the color wheel.



4293101735



4288195428



4280266973

Complementary

The Complementary color scheme is a pair of colors which are on the opposite of each other on the color wheel.



4293101735



4287161284

Split Complementary

Split-complementary colors differ from the complementary color scheme. The scheme consists of three colors, the original color and two neighbors of the complement color.



4278236611



4293101735



4285510269

Square

The Square scheme is like the rectangle color scheme, but the four colors are evenly spaced on the color wheel.



4293101735



4290551901



4282168736



4285245416

Rectangle

The Rectangle color scheme consists of four colors that form a rectangle on the color wheel.



4293101735



4292776049



4282168736



4278235862

Sweetspot

The Sweet Spot groups the original color and five complimentary colors.



4293101735



4294959339



4291004643



4286606964



4278190080



4286611584

Same Dimension

The Same Dimension uses a secret algorithm to generate beautiful new colors.



4293101735



4294935982



4293105288



4285753195



4289921085



4281532433

Inverse Universe

The Inverse Universe completely reimagines the original color for something new.



4293101735



4294935982



4287157731



4285753195



4289921085



4281532433

Previews

White Background



This preview shows how the Android color 4293101735 looks on a white background.

Color Contrast Check

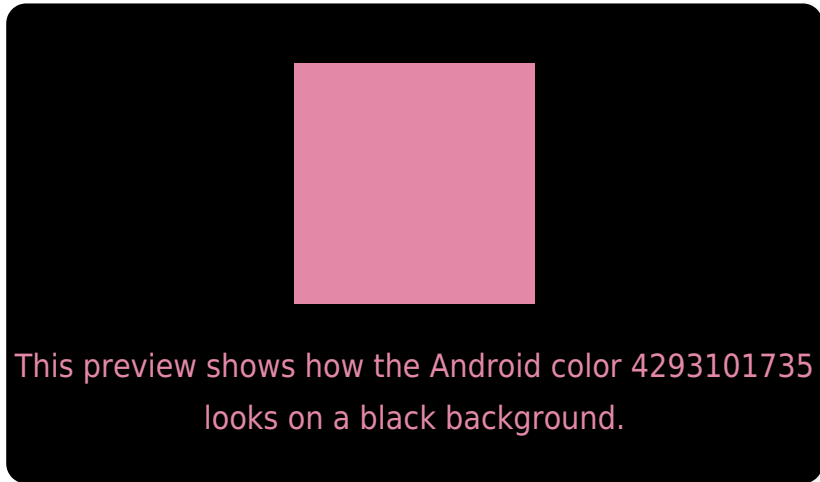
Large Text (above 18pt) WCAG AA × Fail

Any Text WCAG AA × Fail

Large Text (above 18pt) WCAG AAA × Fail

Any Text WCAG AAA × Fail

Black Background



Color Contrast Check

Large Text (above 18pt) WCAG AA ✓ Pass

Any Text WCAG AA ✓ Pass

Large Text (above 18pt) WCAG AAA ✓ Pass

Any Text WCAG AAA ✓ Pass

If you want to check with other color combinations, try the [Color Contrast Checker](#).

Android 4293101735 Background



This preview shows how black text looks on a background with the Android color 4293101735.



This preview shows how white text looks on a background with the Android color 4293101735.

Color Blindness Simulation

Color vision deficiency is a very complex topic, and I could not describe the different causes any better than Wikipedia does, so if you want to learn more, you should check out their [article about color blindness](#).

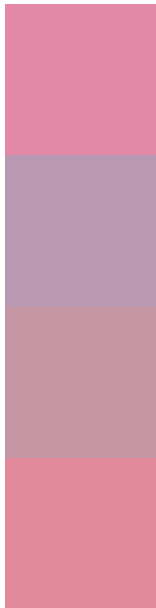
Dichromacy





Tritanopia
4292971413

Trichromacy



Original Color
4293101735

Protanomaly
4290353585

Deuteranomaly
4291139236

Tritanomaly
4293036700

Monochromacy



Original Color
4293101735

Achromatopsia
4289177511

Achromatomaly
4290616487

CSS Examples

Text

The CSS property to change the color of the text to Android 4293101735 is called "color". The color property can be set on classes, ids or directly on the HTML element.

This example shows how text in the color `rgb(227, 136, 167)` looks like.

```
.text, #text, p{  
    color:rgb(227, 136, 167)  
}
```

If you want to add a text shadow in that color use the text-shadow property, you can generate a text shadow directly with our [CSS Text Shadow Generator](#).

Here you see how black text with a 4 pixel rgb(227, 136, 167) colored shadow looks like.

```
.shadow{ text-shadow: 4px 4px 2px rgb(227, 136, 167) }
```

Border

The CSS property to change the border of an element to Android 4293101735 is called "border". The border property can be set on classes, ids or directly on the HTML element.

This example shows the color as border, it can be applied via the CSS property "border" or "border-color".

```
.border, #border, table{ border:4px solid rgb(227, 136, 167) }
```

If only the border color should be changed use the property `border-color`.

```
.border{ border-color:rgb(227, 136, 167) }
```

If you want to add a box shadow in that color use:

Here you see how a box with a 4 pixel `rgb(227, 136, 167)` colored shadow looks like.

```
.boxshadow{ -moz-box-shadow:4px 4px 4px  
4px rgb(227, 136, 167); -webkit-box-  
shadow:4px 4px 4px 4px rgb(227, 136, 167);  
box-shadow:4px 4px 4px 4px rgb(227, 136,  
167) }
```

Background

The CSS property to change the background color of an element to Android 4293101735 is called "background". The background property can be set on classes, ids or directly on the HTML element.

```
.background, #background, body{  
background: rgb(227, 136, 167) }
```

If only the background color should be changed can be used:

```
.background{ background-color: rgb(227,  
136, 167) }
```

This example shows the color as background, it is applied via the CSS property "background".

To optimize and compress your CSS code, you can use our [online CSS compressor and optimizer](#) based on csstidy. If you want to create a linear or radial gradient as background or border, check our [CSS Gradient Generator](#).

Hey! You found this booklet interesting? Support Converting Colors with the new Membership Option!

The pro membership hides all ads, plus gives you double the colors in the color bucket, and more awesome pro features!

[Learn more, Memberships starting at \\$2.50/m!](#)

**Follow me
on Twitter!**

@ConvertingColor