

Converting Colors

Android(4293101970)

Have a look what the booklet for
Android(4293101970) contains.

Android(4293101970)	3
<i>Conversions</i>	4
<i>Details</i>	6
<i>Harmonies</i>	11
<i>Previews</i>	23
<i>Color Blindness Simulation</i>	26
<i>CSS Examples</i>	29

Color

Android(4293101970)

Conversions

Conversions Part 1

Format	Color
Hex	E38992
RGB	227, 137, 146
RGB Percent	89%, 54%, 57%
CMY	0.1098, 0.4627, 0.4275
CMYK	0.00, 0.40, 0.36, 0.11
HSL	354°, 62%, 71%
HSV	354°, 40%, 89%
XYZ	45.8125, 36.2975, 31.7857
YIQ	164.9360, 50.7510, 21.8790

Conversions

Conversions Part 2

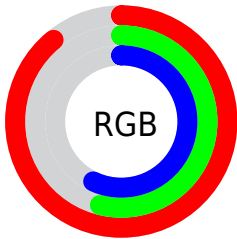
Format	Color
R _Y B	227, 137, 146
Decimal	14911890
CIE Lab	66.75, 35.36, 9.99
CIE LCh	67, 36.747, 15.778
Yxy	36.2975, 0.4022, 0.3187
Android (android.graphics.Color)	4293101970 (0xFFE38992)
YUV	164.9360, -9.3354, 54.4301
Hunter-Lab	60.2474, 30.2995, 10.8927

Details

The Android color `4293101970` is a light color, and the websafe version is hex `FF9999`. A complement of this color would be `4287226842`, and the grayscale version is `4289045925`.

A 20% lighter version of the original color is `4294951112`, and `4289287520` is the 20% darker color. If you saturate the color by 10%, you get `4293096062`, and if you desaturate by 10%, it is `4293107878`.

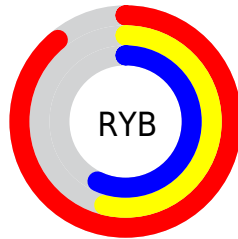
Distribution



Red (89%)

Green (54%)

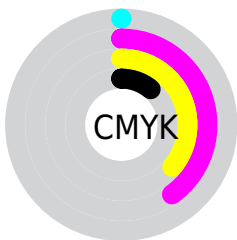
Blue (57%)



Red (89%)

Yellow (54%)

Blue (57%)

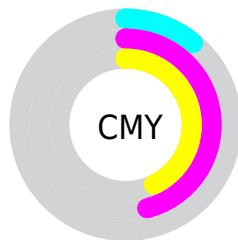


Cyan (0%)

Magenta (40%)

Yellow (36%)

Black (11%)



Cyan (11%)

Magenta (46%)

Yellow (43%)

Brightness & Saturation Gradients

These gradients show how the Android color 4293101970 changes by changing the brightness by 10 percent. The first figure shows a shift by +10% for each color and the second figure -10%.

Similar to the brightness gradients but the following saturation gradients show a change of the Android color 4293101970 by changing the saturation by 10% instead.

 4293101970

 4293101970

4294967295

 4291194744

 4294951112

 4289287520

 4294958308

 4287446088

 4294965759

 4285604914

 4283827997

 4282187778

 4280483841

 4278190080

 4293101970

 4293101970

 4293096062

 4293107878

 4293090409

 4293113531

 4293084501

 4293119439

 4293078592

 4293125348

 4293072940

 4293131256

 4293067031

 4293132287

 4293066775

Harmonies

Analogous

The Analogous color harmony consists of three colors that are next to each other on the color wheel.



4292446900



4293101970



4292579444

Triad

The Triadic color harmony groups three colors that are evenly spaced from another and form a triangle on the color wheel.



4293101970



4286754419



4283869922

Complementary

The Complementary color scheme is a pair of colors which are on the opposite of each other on the color wheel.



4293101970



4287226842

Split Complementary

Split-complementary colors differ from the complementary color scheme. The scheme consists of three colors, the original color and two neighbors of the complement color.



4279742929



4293101970



4283937681

Square

The Square scheme is like the rectangle color scheme, but the four colors are evenly spaced on the color wheel.



4293101970



4289177186



4280595635



4287602914

Rectangle

The Rectangle color scheme consists of four colors that form a rectangle on the color wheel.



4293101970



4291729255



4280595635



4282494430

Sweetspot

The Sweet Spot groups the original color and five complimentary colors.



4293101970



4294959331



4292512227



4286606959



4278190080



4286611584

Same Dimension

The Same Dimension uses a secret algorithm to generate beautiful new colors.



4293101970



4294935953



4293111177



4285753192



4289921042



4281532421

Inverse Universe

The Inverse Universe completely reimagines the original color for something new.



4293101970



4294935953



4287217635



4285753192



4289921042



4281532421

Previews

White Background



This preview shows how the Android color 4293101970 looks on a white background.

Color Contrast Check

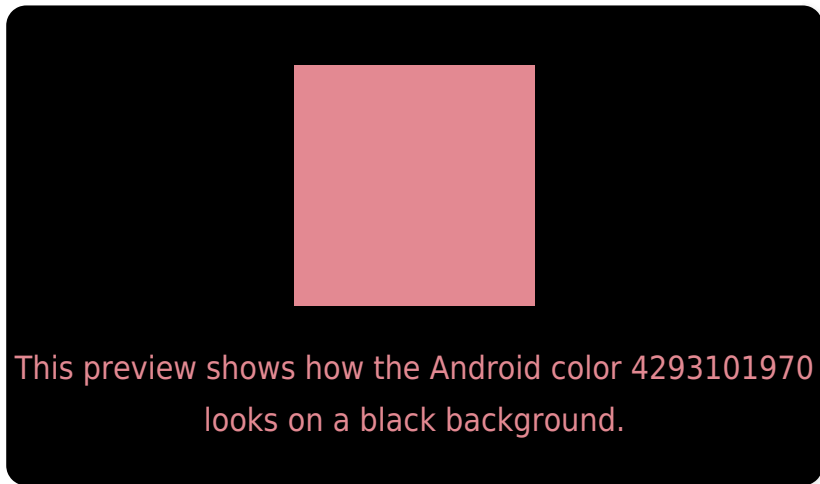
Large Text (above 18pt) WCAG AA × Fail

Any Text WCAG AA × Fail

Large Text (above 18pt) WCAG AAA × Fail

Any Text WCAG AAA × Fail

Black Background



Color Contrast Check

Large Text (above 18pt) WCAG AA ✓ Pass

Any Text WCAG AA ✓ Pass

Large Text (above 18pt) WCAG AAA ✓ Pass

Any Text WCAG AAA ✓ Pass

If you want to check with other color combinations, try the [Color Contrast Checker](#).

Android 4293101970 Background



This preview shows how black text looks on a background with the Android color 4293101970.



This preview shows how white text looks on a background with the Android color 4293101970.

Color Blindness Simulation

Color vision deficiency is a very complex topic, and I could not describe the different causes any better than Wikipedia does, so if you want to learn more, you should check out their [article about color blindness](#).


Dichromacy



Original Color
4293101970

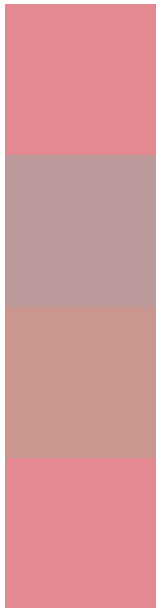
Protanopia
4289110688

Deuteranopia
4290420111



Tritanopia
4293101971

Trichromacy



Original Color
4293101970

Protanomaly
4290550171

Deuteranomaly
4291401360

Tritanomaly
4293101971

Monochromacy



Original Color
4293101970

Achromatopsia
4289045925

Achromatomaly
4290550686

CSS Examples

Text

The CSS property to change the color of the text to Android 4293101970 is called "color". The color property can be set on classes, ids or directly on the HTML element.

This example shows how text in the color `rgb(227, 137, 146)` looks like.

```
.text, #text, p{  
    color:rgb(227, 137, 146)  
}
```

If you want to add a text shadow in that color use the text-shadow property, you can generate a text shadow directly with our [CSS Text Shadow Generator](#).

Here you see how black text with a 4 pixel rgb(227, 137, 146) colored shadow looks like.

```
.shadow{ text-shadow: 4px 4px 2px rgb(227, 137, 146) }
```

Border

The CSS property to change the border of an element to Android 4293101970 is called "border". The border property can be set on classes, ids or directly on the HTML element.

This example shows the color as border, it can be applied via the CSS property "border" or "border-color".

```
.border, #border, table{ border:4px solid rgb(227, 137, 146) }
```

If only the border color should be changed use the property `border-color`.

```
.border{ border-color:rgb(227, 137, 146) }
```

If you want to add a box shadow in that color use:

Here you see how a box with a 4 pixel `rgb(227, 137, 146)` colored shadow looks like.

```
.boxshadow{ -moz-box-shadow:4px 4px 4px  
4px rgb(227, 137, 146); -webkit-box-  
shadow:4px 4px 4px 4px rgb(227, 137, 146);  
box-shadow:4px 4px 4px 4px rgb(227, 137,  
146) }
```

Background

The CSS property to change the background color of an element to Android 4293101970 is called "background". The background property can be set on classes, ids or directly on the HTML element.

```
.background, #background, body{  
background: rgb(227, 137, 146) }
```

If only the background color should be changed can be used:

```
.background{ background-color: rgb(227,  
137, 146) }
```

This example shows the color as background, it is applied via the CSS property "background".

To optimize and compress your CSS code, you can use our [online CSS compressor and optimizer](#) based on csstidy. If you want to create a linear or radial gradient as background or border, check our [CSS Gradient Generator](#).

Hey! You found this booklet interesting? Support Converting Colors with the new Membership Option!

The pro membership hides all ads, plus gives you double the colors in the color bucket, and more awesome pro features!

[Learn more, Memberships starting at \\$2.50/m!](#)

**Follow me
on Twitter!**

@ConvertingColor