

# Converting Colors

Android(4293102490)

Have a look what the booklet for  
Android(4293102490) contains.

<b>Android(4293102490)</b> .....	3
<i><b>Conversions</b></i> .....	4
<i><b>Details</b></i> .....	6
<i><b>Harmonies</b></i> .....	11
<i><b>Previews</b></i> .....	23
<i><b>Color Blindness Simulation</b></i> .....	26
<i><b>CSS Examples</b></i> .....	29

# **Color**

**Android(4293102490)**

# Conversions

## Conversions Part 1

Format	Color
Hex	E38B9A
RGB	227, 139, 154
RGB Percent	89%, 55%, 60%
CMY	0.1098, 0.4549, 0.3961
CMYK	0.00, 0.39, 0.32, 0.11
HSL	350°, 61%, 72%
HSV	350°, 39%, 89%
XYZ	46.7439, 37.1292, 35.2748
YIQ	167.0220, 47.6330, 23.3210

# Conversions

## Conversions Part 2

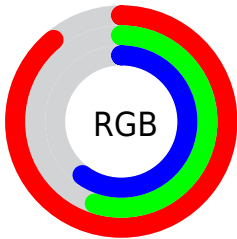
<b>Format</b>	<b>Color</b>
<b>R<sub>YB</sub></b>	227, 139, 154
Decimal	14912410
CIE <sub>Lab</sub>	67.37, 35.30, 6.39
CIE <sub>LCh</sub>	67, 35.871, 10.256
Yxy	37.1292, 0.3923, 0.3116
Android (android.graphics.Color)	4293102490 (0xFFE38B9A)
YUV	167.0220, -6.4198, 52.6007
Hunter-Lab	60.9338, 30.2980, 8.3304

# Details

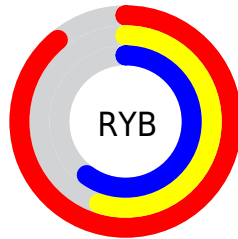
The Android color `4293102490` is a light color, and the websafe version is hex `FF9999`. A complement of this color would be `4287357908`, and the grayscale version is `4289177511`.

A 20% lighter version of the original color is `4294951632`, and `4289288039` is the 20% darker color. If you saturate the color by 10%, you get `4293096583`, and if you desaturate by 10%, it is `4293108397`.

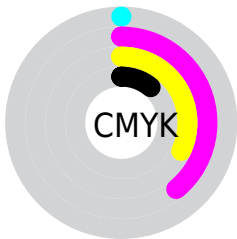
# Distribution



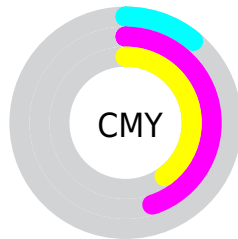
- Red (89%)
- Green (55%)
- Blue (60%)



- Red (89%)
- Yellow (55%)
- Blue (60%)



- Cyan (0%)
- Magenta (39%)
- Yellow (32%)
- Black (11%)



- Cyan (11%)
- Magenta (45%)
- Yellow (40%)

# Brightness & Saturation Gradients

These gradients show how the Android color 4293102490 changes by changing the brightness by 10 percent. The first figure shows a shift by +10% for each color and the second figure -10%.

Similar to the brightness gradients but the following saturation gradients show a change of the Android color 4293102490 by changing the saturation by 10% instead.



 4293102490

 4293102490

4294967295

 4291195264

 4294951632

 4289288039

 4294958829

 4287446607

 4294966271

 4285670968

 4283894307

 4282187789

 4280680449

 4278190080

 4293102490

 4293102490

 4293096583

 4293108397

 4293090932

 4293114048

 4293085026

 4293119954

 4293079119

 4293125861

 4293073468

 4293131512

 4293067561

 4293132287

 4293066791

# Harmonies

## Analogous

The Analogous color harmony consists of three colors that are next to each other on the color wheel.



4292251323



4293102490



4292841596

# Triad

The Triadic color harmony groups three colors that are evenly spaced from another and form a triangle on the color wheel.



4293102490



4287344242



4283543008

# Complementary

The Complementary color scheme is a pair of colors which are on the opposite of each other on the color wheel.



4293102490



4287357908

# Split Complementary

Split-complementary colors differ from the complementary color scheme. The scheme consists of three colors, the original color and two neighbors of the complement color.



4280398797



4293102490



4284724365

# Square

The Square scheme is like the rectangle color scheme, but the four colors are evenly spaced on the color wheel.



4293102490



4289701476



4281841070



4287144931

# Rectangle

The Rectangle color scheme consists of four colors that form a rectangle on the color wheel.



4293102490



4292056941



4281841070



4282298587



# Sweetspot

The Sweet Spot groups the original color and five complimentary colors.



4293102490



4294959334



4292053987



4286606961



4278190080



4286611584



# Same Dimension

The Same Dimension uses a secret algorithm to generate beautiful new colors.



4293102490



4294936476



4293109643



4285753193



4289921054



4281532425



# Inverse Universe

The Inverse Universe completely reimagines the original color for something new.



4293102490



4294936476



4287350755



4285753193



4289921054



4281532425



# Previews

## White Background



This preview shows how the Android color 4293102490 looks on a white background.

## Color Contrast Check

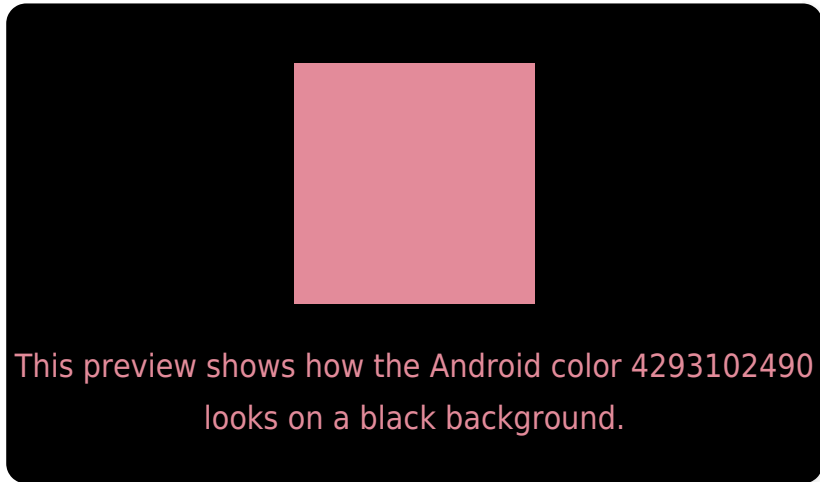
Large Text (above 18pt) WCAG AA × Fail

Any Text WCAG AA × Fail

Large Text (above 18pt) WCAG AAA × Fail

Any Text WCAG AAA × Fail

# Black Background



## Color Contrast Check

Large Text (above 18pt) WCAG AA ✓ Pass

Any Text WCAG AA ✓ Pass

Large Text (above 18pt) WCAG AAA ✓ Pass

Any Text WCAG AAA ✓ Pass

If you want to check with other color combinations, try the [Color Contrast Checker](#).



# Android 4293102490 Background



This preview shows how black text looks on a background with the Android color 4293102490.




This preview shows how white text looks on a background with the Android color 4293102490.

# Color Blindness Simulation

Color vision deficiency is a very complex topic, and I could not describe the different causes any better than Wikipedia does, so if you want to learn more, you should check out their [article about color blindness](#).

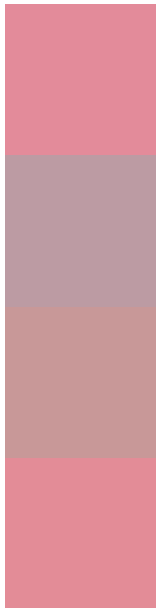
## Dichromacy





**Tritanopia**  
4293102742

# Trichromacy



**Original Color**  
4293102490

**Protanomaly**  
4290550691

**Deuteranomaly**  
4291336344

**Tritanomaly**  
4293102743

# Monochromacy



**Original Color**  
4293102490

**Achromatopsia**  
4289177511

**Achromatomaly**  
4290616738

# CSS Examples

## Text

The CSS property to change the color of the text to Android 4293102490 is called "color". The color property can be set on classes, ids or directly on the HTML element.

This example shows how text in the color `rgb(227, 139, 154)` looks like.

```
.text, #text, p{  
    color:rgb(227, 139, 154)  
}
```

If you want to add a text shadow in that color use the text-shadow property, you can generate a text shadow directly with our [CSS Text Shadow Generator](#).

Here you see how black text with a 4 pixel rgb(227, 139, 154) colored shadow looks like.

```
.shadow{ text-shadow: 4px 4px 2px rgb(227, 139, 154) }
```

## Border

The CSS property to change the border of an element to Android 4293102490 is called "border". The border property can be set on classes, ids or directly on the HTML element.

This example shows the color as border, it can be applied via the CSS property "border" or "border-color".

```
.border, #border, table{ border:4px solid rgb(227, 139, 154) }
```

If only the border color should be changed use the property `border-color`.

```
.border{ border-color:rgb(227, 139, 154) }
```

If you want to add a box shadow in that color use:

Here you see how a box with a 4 pixel `rgb(227, 139, 154)` colored shadow looks like.

```
.boxshadow{ -moz-box-shadow:4px 4px 4px  
4px rgb(227, 139, 154); -webkit-box-  
shadow:4px 4px 4px 4px rgb(227, 139, 154);  
box-shadow:4px 4px 4px 4px rgb(227, 139,  
154) }
```

# Background

The CSS property to change the background color of an element to Android 4293102490 is called "background". The background property can be set on classes, ids or directly on the HTML element.

```
.background, #background, body{  
background: rgb(227, 139, 154) }
```

If only the background color should be changed can be used:

```
.background{ background-color: rgb(227,  
139, 154) }
```

This example shows the color as background, it is applied via the CSS property "background".

To optimize and compress your CSS code, you can use our [online CSS compressor and optimizer](#) based on csstidy. If you want to create a linear or radial gradient as background or border, check our [CSS Gradient Generator](#).



Hey! You found this booklet interesting? Support Converting Colors with the new Membership Option!

The pro membership hides all ads, plus gives you double the colors in the color bucket, and more awesome pro features!

**[Learn more, Memberships starting at \\$2.50/m!](#)**

**Follow me  
on Twitter!**

@ConvertingColor