

Converting Colors

Android(4293108395)

Have a look what the booklet for
Android(4293108395) contains.

Android(4293108395)	3
<i>Conversions</i>	4
<i>Details</i>	6
<i>Harmonies</i>	11
<i>Previews</i>	23
<i>Color Blindness Simulation</i>	26
<i>CSS Examples</i>	29

Color

Android(4293108395)

Conversions

Conversions Part 1

Format	Color
Hex	E3A2AB
RGB	227, 162, 171
RGB Percent	89%, 64%, 67%
CMY	0.1098, 0.3647, 0.3294
CMYK	0.00, 0.29, 0.25, 0.11
HSL	352°, 54%, 76%
HSV	352°, 29%, 89%
XYZ	51.9496, 45.1118, 44.4975
YIQ	182.4610, 35.8510, 16.5790

Conversions

Conversions Part 2

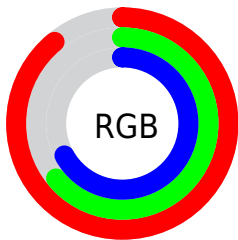
Format	Color
R _Y B	227, 162, 171
Decimal	14918315
CIE Lab	72.97, 25.33, 4.97
CIE LCh	73, 25.818, 11.099
Yxy	45.1118, 0.3670, 0.3187
Android (android.graphics.Color)	4293108395 (0xFFE3A2AB)
YUV	182.4610, -5.6503, 39.0607
Hunter-Lab	67.1653, 20.5229, 7.7357

Details

The Android color `4293108395` is a light color, and the websafe version is hex `CC9999`. A complement of this color would be `4288865242`, and the grayscale version is `4290164406`.

A 20% lighter version of the original color is `4294957538`, and `4289359479` is the 20% darker color. If you saturate the color by 10%, you get `4293102487`, and if you desaturate by 10%, it is `4293114303`.

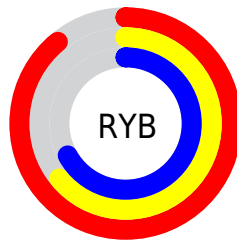
Distribution



Red (89%)

Green (64%)

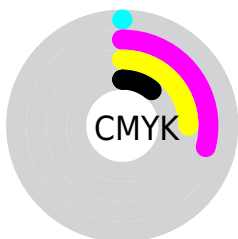
Blue (67%)



Red (89%)

Yellow (64%)

Blue (67%)

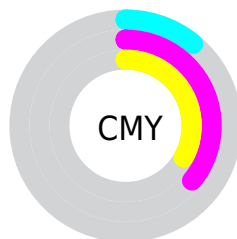


Cyan (0%)

Magenta (29%)

Yellow (25%)

Black (11%)



Cyan (11%)

Magenta (36%)

Yellow (33%)

Brightness & Saturation Gradients


These gradients show how the Android color 4293108395 changes by changing the brightness by 10 percent. The first figure shows a shift by +10% for each color and the second figure -10%.

Similar to the brightness gradients but the following saturation gradients show a change of the Android color 4293108395 by changing the saturation by 10% instead.

 4293108395

 4293108395

4294967295

 4291200913

 4294957538

 4289359479

 4294964991

 4287583582

 4285807943

 4284098096

 4282453788

 4281073664

 4278190080

 4293108395

 4293108395

 4293102487

 4293114303

 4293096836

 4293119954

 4293090928

 4293125862

 4293085021

 4293131769

 4293079369

 4293132287

 4293073462

 4293067554

 4293066783

Harmonies

Analogous

The Analogous color harmony consists of three colors that are next to each other on the color wheel.



4292453571



4293108395



4292912533

Triad

The Triadic color harmony groups three colors that are evenly spaced from another and form a triangle on the color wheel.



4293108395



4288789391



4286823135

Complementary

The Complementary color scheme is a pair of colors which are on the opposite of each other on the color wheel.



4293108395



4288865242

Split Complementary

Split-complementary colors differ from the complementary color scheme. The scheme consists of three colors, the original color and two neighbors of the complement color.



4285513681



4293108395



4287020963

Square

The Square scheme is like the rectangle color scheme, but the four colors are evenly spaced on the color wheel.



4293108395



4290557061



4285710779



4288852705

Rectangle

The Rectangle color scheme consists of four colors that form a rectangle on the color wheel.



4293108395



4292389514



4285710779



4286233820

Sweetspot

The Sweet Spot groups the original color and five complimentary colors.



4293108395



4294961387



4292453091



4286607731



4278190080



4286611584

Same Dimension

The Same Dimension uses a secret algorithm to generate beautiful new colors.



4293108395



4294944948



4293114274



4285753193



4289921049



4281532423

Inverse Universe

The Inverse Universe completely reimagines the original color for something new.



4293108395



4294944948



4288859363



4285753193



4289921049



4281532423

Previews

White Background



This preview shows how the Android color 4293108395 looks on a white background.

Color Contrast Check

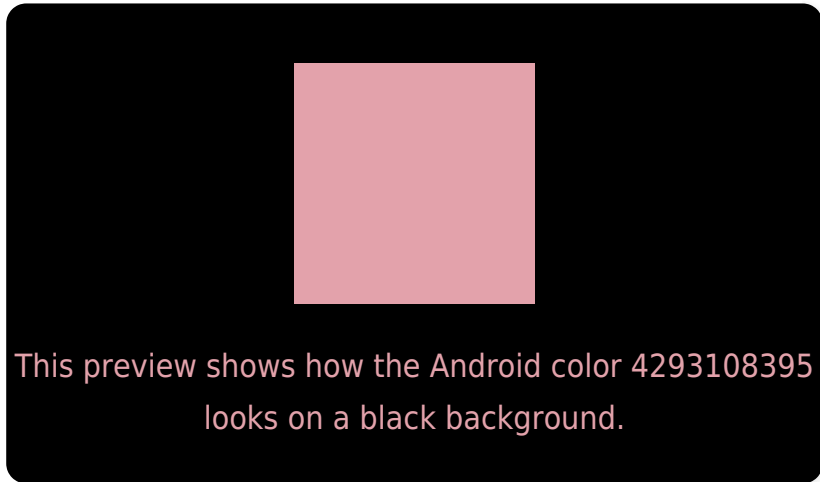
Large Text (above 18pt) WCAG AA × Fail

Any Text WCAG AA × Fail

Large Text (above 18pt) WCAG AAA × Fail

Any Text WCAG AAA × Fail

Black Background



Color Contrast Check

Large Text (above 18pt) WCAG AA ✓ Pass

Any Text WCAG AA ✓ Pass

Large Text (above 18pt) WCAG AAA ✓ Pass

Any Text WCAG AAA ✓ Pass

If you want to check with other color combinations, try the [Color Contrast Checker](#).

Android 4293108395 Background



This preview shows how black text looks on a background with the Android color 4293108395.



This preview shows how white text looks on a background with the Android color 4293108395.

Color Blindness Simulation

Color vision deficiency is a very complex topic, and I could not describe the different causes any better than Wikipedia does, so if you want to learn more, you should check out their [article about color blindness](#).


Dichromacy



Original Color
4293108395

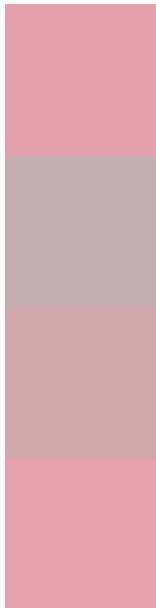
Protanopia
4290163636

Deuteranopia
4291407273



Tritanopia
4293108398

Trichromacy



Original Color
4293108395

Protanomaly
4291210673

Deuteranomaly
4291996074

Tritanomaly
4293108397

Monochromacy



Original Color
4293108395

Achromatopsia
4290164406

Achromatomaly
4291211186

CSS Examples

Text

The CSS property to change the color of the text to Android 4293108395 is called "color". The color property can be set on classes, ids or directly on the HTML element.

This example shows how text in the color `rgb(227, 162, 171)` looks like.

```
.text, #text, p{  
    color:rgb(227, 162, 171)  
}
```

If you want to add a text shadow in that color use the text-shadow property, you can generate a text shadow directly with our [CSS Text Shadow Generator](#).

Here you see how black text with a 4 pixel rgb(227, 162, 171) colored shadow looks like.

```
.shadow{ text-shadow: 4px 4px 2px rgb(227, 162, 171) }
```

Border

The CSS property to change the border of an element to Android 4293108395 is called "border". The border property can be set on classes, ids or directly on the HTML element.

This example shows the color as border, it can be applied via the CSS property "border" or "border-color".

```
.border, #border, table{ border:4px solid rgb(227, 162, 171) }
```

If only the border color should be changed use the property `border-color`.

```
.border{ border-color:rgb(227, 162, 171) }
```

If you want to add a box shadow in that color use:

Here you see how a box with a 4 pixel `rgb(227, 162, 171)` colored shadow looks like.

```
.boxshadow{ -moz-box-shadow:4px 4px 4px  
4px rgb(227, 162, 171); -webkit-box-  
shadow:4px 4px 4px 4px rgb(227, 162, 171);  
box-shadow:4px 4px 4px 4px rgb(227, 162,  
171) }
```

Background

The CSS property to change the background color of an element to Android 4293108395 is called "background". The background property can be set on classes, ids or directly on the HTML element.

```
.background, #background, body{  
background: rgb(227, 162, 171) }
```

If only the background color should be changed can be used:

```
.background{ background-color: rgb(227,  
162, 171) }
```

This example shows the color as background, it is applied via the CSS property "background".

To optimize and compress your CSS code, you can use our [online CSS compressor and optimizer](#) based on csstidy. If you want to create a linear or radial gradient as background or border, check our [CSS Gradient Generator](#).

Hey! You found this booklet interesting? Support Converting Colors with the new Membership Option!

The pro membership hides all ads, plus gives you double the colors in the color bucket, and more awesome pro features!

[Learn more, Memberships starting at \\$2.50/m!](#)

**Follow me
on Twitter!**

@ConvertingColor