

Converting Colors

Android(4293113259)

Have a look what the booklet for
Android(4293113259) contains.

Android(4293113259)	3
<i>Conversions</i>	4
<i>Details</i>	6
<i>Harmonies</i>	11
<i>Previews</i>	23
<i>Color Blindness Simulation</i>	26
<i>CSS Examples</i>	29

Color

Android(4293113259)

Conversions

Conversions Part 1

Format	Color
Hex	E3B5AB
RGB	227, 181, 171
RGB Percent	89%, 71%, 67%
CMY	0.1098, 0.2902, 0.3294
CMYK	0.00, 0.20, 0.25, 0.11
HSL	11°, 50%, 78%
HSV	11°, 25%, 89%
XYZ	55.5531, 52.3189, 45.6987
YIQ	193.6140, 30.6260, 6.6420

Conversions

Conversions Part 2

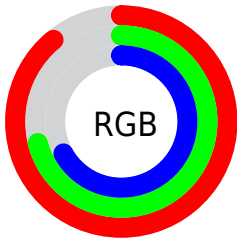
Format	Color
R _Y B	227, 183, 171
Decimal	14923179
CIE Lab	77.47, 15.16, 11.41
CIE LCh	77, 18.973, 36.986
Yxy	52.3189, 0.3617, 0.3407
Android (android.graphics.Color)	4293113259 (0xFFE3B5AB)
YUV	193.6140, -11.1487, 29.2795
Hunter-Lab	72.3318, 10.5129, 13.1733

Details

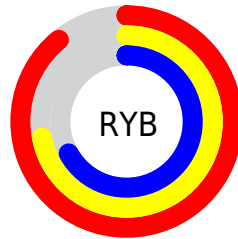
The Android color `4293113259` is a light color, and the websafe version is hex `FFCCCC`. A complement of this color would be `4289452515`, and the grayscale version is `4290953922`.

A 20% lighter version of the original color is `4294962658`, and `4289429623` is the 20% darker color. If you saturate the color by 10%, you get `4293108372`, and if you desaturate by 10%, it is `4293118146`.

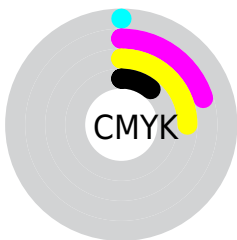
Distribution



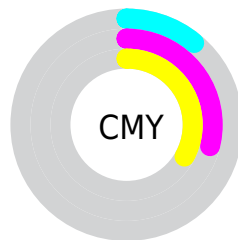
- Red (89%)
- Green (71%)
- Blue (67%)



- Red (89%)
- Yellow (72%)
- Blue (67%)



- Cyan (0%)
- Magenta (20%)
- Yellow (25%)
- Black (11%)



- Cyan (11%)
- Magenta (29%)
- Yellow (33%)

Brightness & Saturation Gradients

These gradients show how the Android color 4293113259 changes by changing the brightness by 10 percent. The first figure shows a shift by +10% for each color and the second figure -10%.

Similar to the brightness gradients but the following saturation gradients show a change of the Android color 4293113259 by changing the saturation by 10% instead.

 4293113259

 4293113259

4294967295

 4291271312

 4294962658

 4289429623

 4287653726

 4285878086

 4284233776

 4282589723

 4281076992

 4278910976

 4278190080

 4293113259

 4293113259

 4293108372

 4293118146

 4293103742

 4293122776

 4293098855

 4293127663

 4293093968

 4293132287

 4293089337

 4293084451

 4293079564

 4293077248

Harmonies

Analogous

The Analogous color harmony consists of three colors that are next to each other on the color wheel.



4293112764



4293113259



4292459168

Triad

The Triadic color harmony groups three colors that are evenly spaced from another and form a triangle on the color wheel.



4293113259



4288858289



4289839330

Complementary

The Complementary color scheme is a pair of colors which are on the opposite of each other on the color wheel.



4293113259



4289452515

Split Complementary

Split-complementary colors differ from the complementary color scheme. The scheme consists of three colors, the original color and two neighbors of the complement color.



4288464351



4293113259



4287941315

Square

The Square scheme is like the rectangle color scheme, but the four colors are evenly spaced on the color wheel.



4293113259



4290102691



4287744468



4291345115

Rectangle

The Rectangle color scheme consists of four colors that form a rectangle on the color wheel.



4293113259



4291804829



4287744468



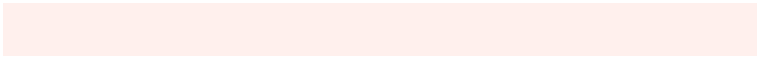
4289315298

Sweetspot

The Sweet Spot groups the original color and five complimentary colors.



4293113259



4294963437



4293110746



4286609269



4278190080



4286611584

Same Dimension

The Same Dimension uses a secret algorithm to generate beautiful new colors.



4293113259



4294951091



4293120171



4285753703



4289929216



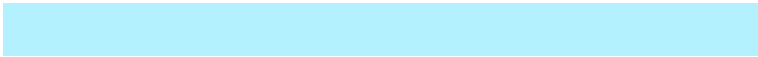
4281534720

Inverse Universe

The Inverse Universe completely reimagines the original color for something new.



4289452515



4289982975



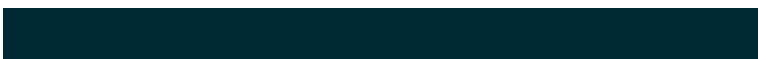
4289445603



4284969331



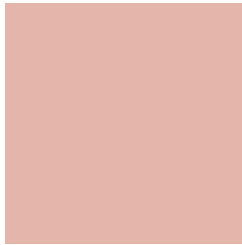
4278227891



4278200883

Previews

White Background



This preview shows how the Android color 4293113259 looks on a white background.

Color Contrast Check

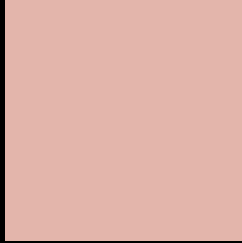
Large Text (above 18pt) WCAG AA × Fail

Any Text WCAG AA × Fail

Large Text (above 18pt) WCAG AAA × Fail

Any Text WCAG AAA × Fail

Black Background



This preview shows how the Android color 4293113259 looks on a black background.

Color Contrast Check

Large Text (above 18pt) WCAG AA ✓ Pass

Any Text WCAG AA ✓ Pass

Large Text (above 18pt) WCAG AAA ✓ Pass

Any Text WCAG AAA ✓ Pass

If you want to check with other color combinations, try the [Color Contrast Checker](#).

Android 4293113259 Background



This preview shows how black text looks on a background with the Android color 4293113259.




This preview shows how white text looks on a background with the Android color 4293113259.

Color Blindness Simulation

Color vision deficiency is a very complex topic, and I could not describe the different causes any better than Wikipedia does, so if you want to learn more, you should check out their [article about color blindness](#).

Dichromacy





Tritanopia
4293243584

Trichromacy



Original Color
4293113259

Protanomaly
4291935150

Deuteranomaly
4292720810

Tritanomaly
4293178296

Monochromacy



Original Color
4293113259

Achromatopsia
4290953922

Achromatomaly
4291739066

CSS Examples

Text

The CSS property to change the color of the text to Android 4293113259 is called "color". The color property can be set on classes, ids or directly on the HTML element.

This example shows how text in the color `rgb(227, 181, 171)` looks like.

```
.text, #text, p{  
    color:rgb(227, 181, 171)  
}
```

If you want to add a text shadow in that color use the text-shadow property, you can generate a text shadow directly with our [CSS Text Shadow Generator](#).

Here you see how black text with a 4 pixel rgb(227, 181, 171) colored shadow looks like.

```
.shadow{ text-shadow: 4px 4px 2px rgb(227, 181, 171) }
```

Border

The CSS property to change the border of an element to Android 4293113259 is called "border". The border property can be set on classes, ids or directly on the HTML element.

This example shows the color as border, it can be applied via the CSS property "border" or "border-color".

```
.border, #border, table{ border:4px solid rgb(227, 181, 171) }
```

If only the border color should be changed use the property `border-color`.

```
.border{ border-color:rgb(227, 181, 171) }
```

If you want to add a box shadow in that color use:

Here you see how a box with a 4 pixel `rgb(227, 181, 171)` colored shadow looks like.

```
.boxshadow{ -moz-box-shadow:4px 4px 4px  
4px rgb(227, 181, 171); -webkit-box-  
shadow:4px 4px 4px 4px rgb(227, 181, 171);  
box-shadow:4px 4px 4px 4px rgb(227, 181,  
171) }
```

Background

The CSS property to change the background color of an element to Android 4293113259 is called "background". The background property can be set on classes, ids or directly on the HTML element.

```
.background, #background, body{  
background: rgb(227, 181, 171) }
```

If only the background color should be changed can be used:

```
.background{ background-color: rgb(227,  
181, 171) }
```

This example shows the color as background, it is applied via the CSS property "background".

To optimize and compress your CSS code, you can use our [online CSS compressor and optimizer](#) based on csstidy. If you want to create a linear or radial gradient as background or border, check our [CSS Gradient Generator](#).

Hey! You found this booklet interesting? Support Converting Colors with the new Membership Option!

The pro membership hides all ads, plus gives you double the colors in the color bucket, and more awesome pro features!

[Learn more, Memberships starting at \\$2.50/m!](#)

**Follow me
on Twitter!**

@ConvertingColor