

Converting Colors

Android(4293114275)

Have a look what the booklet for
Android(4293114275) contains.

Android(4293114275)	3
<i>Conversions</i>	4
<i>Details</i>	6
<i>Harmonies</i>	11
<i>Previews</i>	23
<i>Color Blindness Simulation</i>	26
<i>CSS Examples</i>	29

Color

Android(4293114275)

Conversions

Conversions Part 1

Format	Color
Hex	E3B9A3
RGB	227, 185, 163
RGB Percent	89%, 73%, 64%
CMY	0.1098, 0.2745, 0.3608
CMYK	0.00, 0.19, 0.28, 0.11
HSL	21°, 53%, 76%
HSV	21°, 28%, 89%
XYZ	55.6384, 53.6732, 42.0778
YIQ	195.0500, 32.0940, 2.0620

Conversions

Conversions Part 2

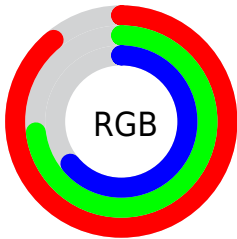
Format	Color
R_{YB}	227, 197, 163
Decimal	14924195
CIE _{Lab}	78.27, 11.92, 16.86
CIE _{LCh}	78, 20.648, 54.730
Yxy	53.6732, 0.3675, 0.3545
Android (android.graphics.Color)	4293114275 (0xFFE3B9A3)
YUV	195.0500, -15.8006, 28.0202
Hunter-Lab	73.2620, 7.3523, 17.2303

Details

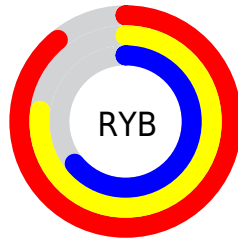
The Android color `4293114275` is a light color, and the websafe version is hex `FFCCCC`. A complement of this color would be `4288925155`, and the grayscale version is `4291019715`.

A 20% lighter version of the original color is `4294963674`, and `4289430639` is the 20% darker color. If you saturate the color by 10%, you get `4293110412`, and if you desaturate by 10%, it is `4293118138`.

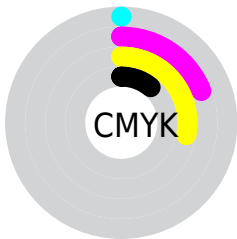
Distribution



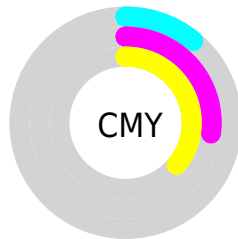
- Red (89%)
- Green (73%)
- Blue (64%)



- Red (89%)
- Yellow (77%)
- Blue (64%)



- Cyan (0%)
- Magenta (19%)
- Yellow (28%)
- Black (11%)



- Cyan (11%)
- Magenta (27%)
- Yellow (36%)

Brightness & Saturation Gradients

These gradients show how the Android color 4293114275 changes by changing the brightness by 10 percent. The first figure shows a shift by +10% for each color and the second figure -10%.

Similar to the brightness gradients but the following saturation gradients show a change of the Android color 4293114275 by changing the saturation by 10% instead.

 4293114275

 4293114275

4294967295

 4291272329

 4294963674

 4289430639

 4294967286

 4287589207

 4285878847

 4284169001

 4282590485

 4281078016

 4278976512

 4278190080

 4293114275

 4293114275

 4293110412

 4293118138

 4293106550

 4293122000

 4293102687

 4293125863

 4293098824

 4293129726

 4293095217

 4293132287

 4293091355

 4293087492

 4293086720

Harmonies

Analogous

The Analogous color harmony consists of three colors that are next to each other on the color wheel.



4293572018



4293114275



4292132764

Triad

The Triadic color harmony groups three colors that are evenly spaced from another and form a triangle on the color wheel.



4293114275



4288138685



4290887396

Complementary

The Complementary color scheme is a pair of colors which are on the opposite of each other on the color wheel.



4293114275



4288925155

Split Complementary

Split-complementary colors differ from the complementary color scheme. The scheme consists of three colors, the original color and two neighbors of the complement color.



4289184999



4293114275



4287548625

Square

The Square scheme is like the rectangle color scheme, but the four colors are evenly spaced on the color wheel.



4293114275



4289317547



4287941344



4292327640

Rectangle

The Rectangle color scheme consists of four colors that form a rectangle on the color wheel.



4293114275



4291281820



4287941344



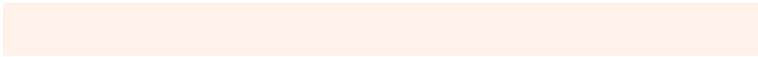
4290298086

Sweetspot

The Sweet Spot groups the original color and five complimentary colors.



4293114275



4294963947



4293108686



4286609267



4278190080



4286611584

Same Dimension

The Same Dimension uses a secret algorithm to generate beautiful new colors.



4293114275



4294952616



4293122211



4285754215



4289936640



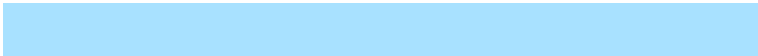
4281537024

Inverse Universe

The Inverse Universe completely reimagines the original color for something new.



4288925155



4289257983



4288917219



4284968819



4278220211



4278198579

Previews

White Background



This preview shows how the Android color 4293114275 looks on a white background.

Color Contrast Check

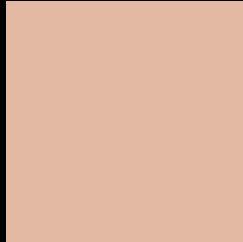
Large Text (above 18pt) WCAG AA × Fail

Any Text WCAG AA × Fail

Large Text (above 18pt) WCAG AAA × Fail

Any Text WCAG AAA × Fail

Black Background



This preview shows how the Android color 4293114275 looks on a black background.

Color Contrast Check

Large Text (above 18pt) WCAG AA ✓ Pass

Any Text WCAG AA ✓ Pass

Large Text (above 18pt) WCAG AAA ✓ Pass

Any Text WCAG AAA ✓ Pass

If you want to check with other color combinations, try the [Color Contrast Checker](#).

Android 4293114275 Background



This preview shows how black text looks on a background with the Android color 4293114275.



This preview shows how white text looks on a background with the Android color 4293114275.

Color Blindness Simulation

Color vision deficiency is a very complex topic, and I could not describe the different causes any better than Wikipedia does, so if you want to learn more, you should check out their [article about color blindness](#).


Dichromacy



Original Color
4293114275

Protanopia
4291543463

Deuteranopia
4292852387



Tritanopia
4293375170

Trichromacy



Original Color
4293114275

Protanomaly
4292132518

Deuteranomaly
4292917923

Tritanomaly
4293310135

Monochromacy



Original Color
4293114275

Achromatopsia
4291019715

Achromatomaly
4291805111

CSS Examples

Text

The CSS property to change the color of the text to Android 4293114275 is called "color". The color property can be set on classes, ids or directly on the HTML element.

This example shows how text in the color `rgb(227, 185, 163)` looks like.

```
.text, #text, p{  
    color:rgb(227, 185, 163)  
}
```

If you want to add a text shadow in that color use the text-shadow property, you can generate a text shadow directly with our [CSS Text Shadow Generator](#).

Here you see how black text with a 4 pixel rgb(227, 185, 163) colored shadow looks like.

```
.shadow{ text-shadow: 4px 4px 2px rgb(227, 185, 163) }
```

Border

The CSS property to change the border of an element to Android 4293114275 is called "border". The border property can be set on classes, ids or directly on the HTML element.

This example shows the color as border, it can be applied via the CSS property "border" or "border-color".

```
.border, #border, table{ border:4px solid rgb(227, 185, 163) }
```

If only the border color should be changed use the property `border-color`.

```
.border{ border-color:rgb(227, 185, 163) }
```

If you want to add a box shadow in that color use:

Here you see how a box with a 4 pixel `rgb(227, 185, 163)` colored shadow looks like.

```
.boxshadow{ -moz-box-shadow:4px 4px 4px  
4px rgb(227, 185, 163); -webkit-box-  
shadow:4px 4px 4px 4px rgb(227, 185, 163);  
box-shadow:4px 4px 4px 4px rgb(227, 185,  
163) }
```

Background

The CSS property to change the background color of an element to Android 4293114275 is called "background". The background property can be set on classes, ids or directly on the HTML element.

```
.background, #background, body{  
background: rgb(227, 185, 163) }
```

If only the background color should be changed can be used:

```
.background{ background-color: rgb(227,  
185, 163) }
```

This example shows the color as background, it is applied via the CSS property "background".

To optimize and compress your CSS code, you can use our [online CSS compressor and optimizer](#) based on csstidy. If you want to create a linear or radial gradient as background or border, check our [CSS Gradient Generator](#).

Hey! You found this booklet interesting? Support Converting Colors with the new Membership Option!

The pro membership hides all ads, plus gives you double the colors in the color bucket, and more awesome pro features!

[Learn more, Memberships starting at \\$2.50/m!](#)

**Follow me
on Twitter!**

@ConvertingColor