

Converting Colors

Android(4293115547)

Have a look what the booklet for
Android(4293115547) contains.

Android(4293115547)	3
<i>Conversions</i>	4
<i>Details</i>	6
<i>Harmonies</i>	11
<i>Previews</i>	23
<i>Color Blindness Simulation</i>	26
<i>CSS Examples</i>	29

Color

Android(4293115547)

Conversions

Conversions Part 1

Format	Color
Hex	E3BE9B
RGB	227, 190, 155
RGB Percent	89%, 75%, 61%
CMY	0.1098, 0.2549, 0.3922
CMYK	0.00, 0.16, 0.32, 0.11
HSL	29°, 56%, 75%
HSV	29°, 32%, 89%
XYZ	56.0084, 55.5244, 38.7757
YIQ	197.0730, 33.2870, -3.0410

Conversions

Conversions Part 2

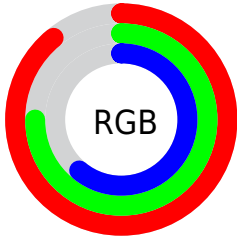
Format	Color
R_{YB}	227, 223, 155
Decimal	14925467
CIE Lab	79.34, 8.23, 22.62
CIE LCh	79, 24.071, 70.009
Yxy	55.5244, 0.3726, 0.3694
Android (android.graphics.Color)	4293115547 (0xFFE3BE9B)
YUV	197.0730, -20.7420, 26.2460
Hunter-Lab	74.5147, 3.7675, 21.3072

Details

The Android color `4293115547` is a light color, and the websafe version is hex `FFCC99`. A complement of this color would be `4288397539`, and the grayscale version is `4291151301`.

A 20% lighter version of the original color is `4294964946`, and `4289431912` is the 20% darker color. If you saturate the color by 10%, you get `4293112452`, and if you desaturate by 10%, it is `4293118642`.

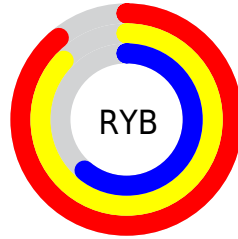
Distribution



Red (89%)

Green (75%)

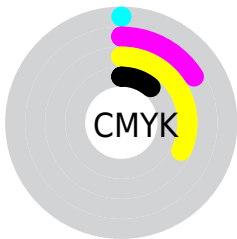
Blue (61%)



Red (89%)

Yellow (87%)

Blue (61%)

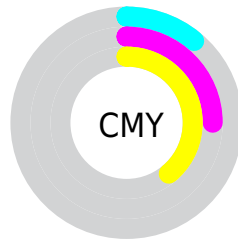


Cyan (0%)

Magenta (16%)

Yellow (32%)

Black (11%)



Cyan (11%)

Magenta (25%)

Yellow (39%)

Brightness & Saturation Gradients

These gradients show how the Android color 4293115547 changes by changing the brightness by 10 percent. The first figure shows a shift by +10% for each color and the second figure -10%.

Similar to the brightness gradients but the following saturation gradients show a change of the Android color 4293115547 by changing the saturation by 10% instead.



4293115547



4293115547

4294967295



4291208065



4294964946



4289431912



4294967278



4287590223



4285880120



4284170274



4282526221



4281013504



4279107584



4278190080

 4293115547

 4293115547

 4293112452

 4293118642

 4293109614

 4293121480

 4293106519

 4293124575

 4293103424

 4293127670

 4293100585

 4293130495

 4293097491

 4293132287

 4293094912

Harmonies

Analogous

The Analogous color harmony consists of three colors that are next to each other on the color wheel.



4293965993



4293115547



4291741080

Triad

The Triadic color harmony groups three colors that are evenly spaced from another and form a triangle on the color wheel.



4293115547



4287287755



4292000999

Complementary

The Complementary color scheme is a pair of colors which are on the opposite of each other on the color wheel.



4293115547



4288397539

Split Complementary

Split-complementary colors differ from the complementary color scheme. The scheme consists of three colors, the original color and two neighbors of the complement color.



4290036976



4293115547



4287090913

Square

The Square scheme is like the rectangle color scheme, but the four colors are evenly spaced on the color wheel.



4293115547



4288467125



4288203758



4293441236

Rectangle

The Rectangle color scheme consists of four colors that form a rectangle on the color wheel.



4293115547



4290628253



4288203758



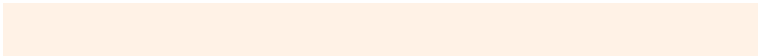
4291346411

Sweetspot

The Sweet Spot groups the original color and five complimentary colors.



4293115547



4294963942



4293106624



4286609520



4278190080



4286611584

Same Dimension

The Same Dimension uses a secret algorithm to generate beautiful new colors.



4293115547



4294954398



4293124763



4285754727



4289943296



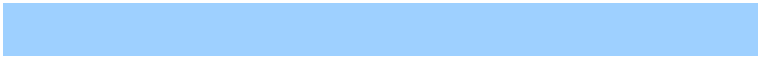
4281538816

Inverse Universe

The Inverse Universe completely reimagines the original color for something new.



4288397539



4288598271



4288388323



4284968307



4278213811



4278196787

Previews

White Background



This preview shows how the Android color 4293115547 looks on a white background.

Color Contrast Check

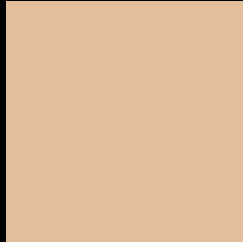
Large Text (above 18pt) WCAG AA × Fail

Any Text WCAG AA × Fail

Large Text (above 18pt) WCAG AAA × Fail

Any Text WCAG AAA × Fail

Black Background



This preview shows how the Android color 4293115547 looks on a black background.

Color Contrast Check

Large Text (above 18pt) WCAG AA ✓ Pass

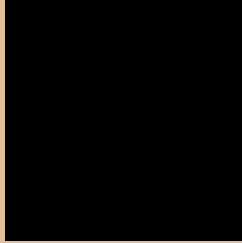
Any Text WCAG AA ✓ Pass

Large Text (above 18pt) WCAG AAA ✓ Pass

Any Text WCAG AAA ✓ Pass

If you want to check with other color combinations, try the [Color Contrast Checker](#).

Android 4293115547 Background



This preview shows how black text looks on a background with the Android color 4293115547.



This preview shows how white text looks on a background with the Android color 4293115547.

Color Blindness Simulation

Color vision deficiency is a very complex topic, and I could not describe the different causes any better than Wikipedia does, so if you want to learn more, you should check out their [article about color blindness](#).

Dichromacy



Original Color
4293115547

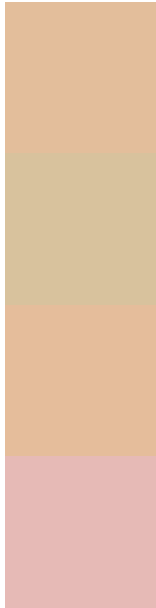
Protanopia
4291937438

Deuteranopia
4293311899



Tritanopia
4293441734

Trichromacy



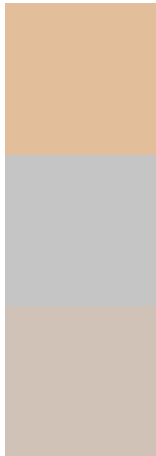
Original Color
4293115547

Protanomaly
4292395677

Deuteranomaly
4293246363

Tritanomaly
4293311158

Monochromacy



Original Color
4293115547

Achromatopsia
4291151301

Achromatomaly
4291871414

CSS Examples

Text

The CSS property to change the color of the text to Android 4293115547 is called "color". The color property can be set on classes, ids or directly on the HTML element.

This example shows how text in the color `rgb(227, 190, 155)` looks like.

```
.text, #text, p{  
    color:rgb(227, 190, 155)  
}
```

If you want to add a text shadow in that color use the text-shadow property, you can generate a text shadow directly with our [CSS Text Shadow Generator](#).

Here you see how black text with a 4 pixel rgb(227, 190, 155) colored shadow looks like.

```
.shadow{ text-shadow: 4px 4px 2px rgb(227, 190, 155) }
```

Border

The CSS property to change the border of an element to Android 4293115547 is called "border". The border property can be set on classes, ids or directly on the HTML element.

This example shows the color as border, it can be applied via the CSS property "border" or "border-color".

```
.border, #border, table{ border:4px solid rgb(227, 190, 155) }
```

If only the border color should be changed use the property `border-color`.

```
.border{ border-color:rgb(227, 190, 155) }
```

If you want to add a box shadow in that color use:

Here you see how a box with a 4 pixel `rgb(227, 190, 155)` colored shadow looks like.

```
.boxshadow{ -moz-box-shadow:4px 4px 4px 4px rgb(227, 190, 155); -webkit-box-shadow:4px 4px 4px 4px rgb(227, 190, 155); box-shadow:4px 4px 4px 4px rgb(227, 190, 155) }
```

Background

The CSS property to change the background color of an element to Android 4293115547 is called "background". The background property can be set on classes, ids or directly on the HTML element.

```
.background, #background, body{  
background: rgb(227, 190, 155) }
```

If only the background color should be changed can be used:

```
.background{ background-color: rgb(227,  
190, 155) }
```

This example shows the color as background, it is applied via the CSS property "background".

To optimize and compress your CSS code, you can use our [online CSS compressor and optimizer](#) based on csstidy. If you want to create a linear or radial gradient as background or border, check our [CSS Gradient Generator](#).

Hey! You found this booklet interesting? Support Converting Colors with the new Membership Option!

The pro membership hides all ads, plus gives you double the colors in the color bucket, and more awesome pro features!

[Learn more, Memberships starting at \\$2.50/m!](#)

**Follow me
on Twitter!**

@ConvertingColor