

# Converting Colors

Android(4293116081)

Have a look what the booklet for  
Android(4293116081) contains.

<b>Android(4293116081)</b> .....	3
<b><i>Conversions</i></b> .....	4
<b><i>Details</i></b> .....	6
<b><i>Harmonies</i></b> .....	11
<b><i>Previews</i></b> .....	23
<b><i>Color Blindness Simulation</i></b> .....	26
<b><i>CSS Examples</i></b> .....	29

# **Color**

**Android(4293116081)**

# Conversions

## Conversions Part 1

Format	Color
Hex	E3C0B1
RGB	227, 192, 177
RGB Percent	89%, 75%, 69%
CMY	0.1098, 0.2471, 0.3059
CMYK	0.00, 0.15, 0.22, 0.11
HSL	18°, 47%, 79%
HSV	18°, 22%, 89%
XYZ	58.4640, 57.2045, 49.5552
YIQ	200.7550, 25.6750, 2.7550

# Conversions

## Conversions Part 2

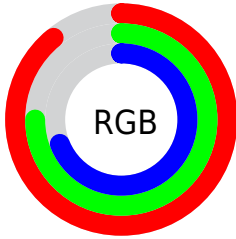
Format	Color
R <sub>Y</sub> B	227, 198, 177
Decimal	14926001
CIE Lab	80.29, 10.16, 12.18
CIE LCh	80, 15.866, 50.164
Yxy	57.2045, 0.3538, 0.3462
Android (android.graphics.Color)	4293116081 (0xFFE3C0B1)
YUV	200.7550, -11.7112, 23.0169
Hunter-Lab	75.6337, 5.6197, 14.0968

# Details

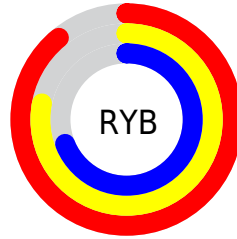
The Android color `4293116081` is a light color, and the websafe version is hex `FFCCCC`. A complement of this color would be `4289844451`, and the grayscale version is `4291414473`.

A 20% lighter version of the original color is `4294965481`, and `4289432444` is the 20% darker color. If you saturate the color by 10%, you get `4293111962`, and if you desaturate by 10%, it is `4293120200`.

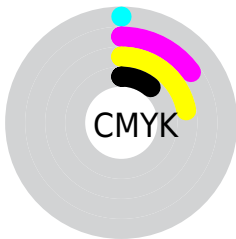
# Distribution



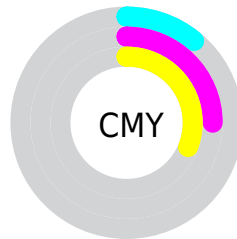
- Red (89%)
- Green (75%)
- Blue (69%)



- Red (89%)
- Yellow (78%)
- Blue (69%)



- Cyan (0%)
- Magenta (15%)
- Yellow (22%)
- Black (11%)



- Cyan (11%)
- Magenta (25%)
- Yellow (31%)

# Brightness & Saturation Gradients

These gradients show how the Android color 4293116081 changes by changing the brightness by 10 percent. The first figure shows a shift by +10% for each color and the second figure -10%.

Similar to the brightness gradients but the following saturation gradients show a change of the Android color 4293116081 by changing the saturation by 10% instead.



 4293116081

 4293116081

4294967295


 4291274134

 4294965481

 4289432444

 4287656291

 4285946188

 4284301621

 4282657568

 4281144840

 4279697408

 4278190080

 4293116081

 4293116081

 4293111962

 4293120200

 4293107844

 4293124318

 4293103725

 4293128437

 4293099606

 4293132287

 4293095744

 4293091625

 4293087506

 4293084160

# Harmonies

## Analogous

The Analogous color harmony consists of three colors that are next to each other on the color wheel.



4293377470



4293116081



4292396202

# Triad

The Triadic color harmony groups three colors that are evenly spaced from another and form a triangle on the color wheel.



4293116081



4289319106



4291085795

# Complementary

The Complementary color scheme is a pair of colors which are on the opposite of each other on the color wheel.



4293116081



4289844451

# Split Complementary

Split-complementary colors differ from the complementary color scheme. The scheme consists of three colors, the original color and two neighbors of the complement color.



4289841892



4293116081



4288794833

# Square

The Square scheme is like the rectangle color scheme, but the four colors are evenly spaced on the color wheel.



4293116081



4290235828



4288990941



4292264154

# Rectangle

The Rectangle color scheme consists of four colors that form a rectangle on the color wheel.



4293116081



4291741866



4288990941



4290627556

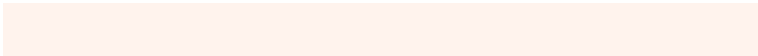


# Sweetspot

The Sweet Spot groups the original color and five complimentary colors.



4293116081



4294964205



4293112276



4286609525



4278190080



4286611584



# Same Dimension

The Same Dimension uses a secret algorithm to generate beautiful new colors.



4293116081



4294955453



4293122481



4285754215



4289934848



4281536256



# Inverse Universe

The Inverse Universe completely reimagines the original color for something new.



4289844451



4290636799



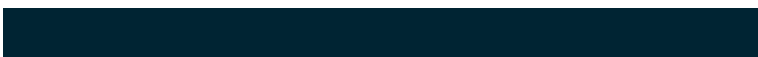
4289838051



4284968819



4278222259

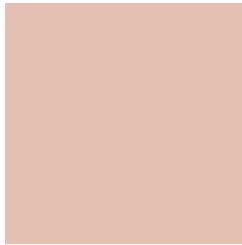


4278199347



# Previews

## White Background



This preview shows how the Android color 4293116081 looks on a white background.

## Color Contrast Check

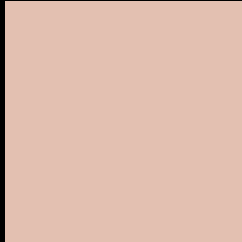
Large Text (above 18pt) WCAG AA × Fail

Any Text WCAG AA × Fail

Large Text (above 18pt) WCAG AAA × Fail

Any Text WCAG AAA × Fail

# Black Background



This preview shows how the Android color 4293116081 looks on a black background.

## Color Contrast Check

Large Text (above 18pt) WCAG AA ✓ Pass

Any Text WCAG AA ✓ Pass

Large Text (above 18pt) WCAG AAA ✓ Pass

Any Text WCAG AAA ✓ Pass

If you want to check with other color combinations, try the [Color Contrast Checker](#).



# Android 4293116081 Background



This preview shows how black text looks on a background with the Android color 4293116081.



This preview shows how white text looks on a background with the Android color 4293116081.

# Color Blindness Simulation

Color vision deficiency is a very complex topic, and I could not describe the different causes any better than Wikipedia does, so if you want to learn more, you should check out their [article about color blindness](#).

## Dichromacy





**Tritanopia**  
4293311691

# Trichromacy



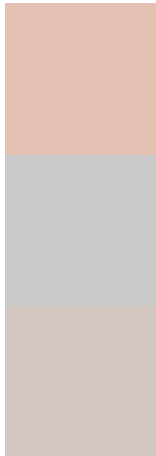
**Original Color**  
4293116081

**Protanomaly**  
4292265139

**Deuteranomaly**  
4293116081

**Tritanomaly**  
4293246402

# Monochromacy



**Original Color**  
4293116081

**Achromatopsia**  
4291414473

**Achromatomaly**  
4292003520

# CSS Examples

## Text

The CSS property to change the color of the text to Android 4293116081 is called "color". The color property can be set on classes, ids or directly on the HTML element.

This example shows how text in the color `rgb(227, 192, 177)` looks like.

```
.text, #text, p{  
    color:rgb(227, 192, 177)  
}
```

If you want to add a text shadow in that color use the text-shadow property, you can generate a text shadow directly with our [CSS Text Shadow Generator](#).

Here you see how black text with a 4 pixel rgb(227, 192, 177) colored shadow looks like.

```
.shadow{ text-shadow: 4px 4px 2px rgb(227, 192, 177) }
```

## Border

The CSS property to change the border of an element to Android 4293116081 is called "border". The border property can be set on classes, ids or directly on the HTML element.

This example shows the color as border, it can be applied via the CSS property "border" or "border-color".

```
.border, #border, table{ border:4px solid rgb(227, 192, 177) }
```

If only the border color should be changed use the property `border-color`.

```
.border{ border-color:rgb(227, 192, 177) }
```

If you want to add a box shadow in that color use:

Here you see how a box with a 4 pixel `rgb(227, 192, 177)` colored shadow looks like.

```
.boxshadow{ -moz-box-shadow:4px 4px 4px  
4px rgb(227, 192, 177); -webkit-box-  
shadow:4px 4px 4px 4px rgb(227, 192, 177);  
box-shadow:4px 4px 4px 4px rgb(227, 192,  
177) }
```

# Background

The CSS property to change the background color of an element to Android 4293116081 is called "background". The background property can be set on classes, ids or directly on the HTML element.

```
.background, #background, body{  
background: rgb(227, 192, 177) }
```

If only the background color should be changed can be used:

```
.background{ background-color: rgb(227,  
192, 177) }
```

This example shows the color as background, it is applied via the CSS property "background".

To optimize and compress your CSS code, you can use our [online CSS compressor and optimizer](#) based on csstidy. If you want to create a linear or radial gradient as background or border, check our [CSS Gradient Generator](#).



Hey! You found this booklet interesting? Support Converting Colors with the new Membership Option!

The pro membership hides all ads, plus gives you double the colors in the color bucket, and more awesome pro features!

**[Learn more, Memberships starting at \\$2.50/m!](#)**

**Follow me  
on Twitter!**

@ConvertingColor