

# Converting Colors

Android(4293116867)

Have a look what the booklet for  
Android(4293116867) contains.

<b>Android(4293116867)</b> .....	3
<b><i>Conversions</i></b> .....	4
<b><i>Details</i></b> .....	6
<b><i>Harmonies</i></b> .....	11
<b><i>Previews</i></b> .....	23
<b><i>Color Blindness Simulation</i></b> .....	26
<b><i>CSS Examples</i></b> .....	29

# **Color**

**Android(4293116867)**

# Conversions

## Conversions Part 1

<b>Format</b>	<b>Color</b>
Hex	E3C3C3
RGB	227, 195, 195
RGB Percent	89%, 76%, 76%
CMY	0.1098, 0.2353, 0.2353
CMYK	0.00, 0.14, 0.14, 0.11
HSL	0°, 36%, 83%
HSV	0°, 14%, 89%
XYZ	61.0440, 59.3012, 59.8587
YIQ	204.5680, 19.0720, 6.7840

# Conversions

## Conversions Part 2

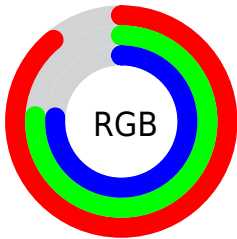
<b>Format</b>	<b>Color</b>
<b>R<sub>YB</sub></b>	227, 195, 195
Decimal	14926787
CIE <sub>Lab</sub>	81.46, 11.32, 4.19
CIE <sub>LCh</sub>	81, 12.069, 20.312
Yxy	59.3012, 0.3387, 0.3291
Android (android.graphics.Color)	4293116867 (0xFFE3C3C3)
YUV	204.5680, -4.7170, 19.6729
Hunter-Lab	77.0073, 6.7349, 7.8183

# Details

The Android color `4293116867` is a light color, and the websafe version is hex `FFCCCC`. A complement of this color would be `4291027939`, and the grayscale version is `4291677645`.

A 20% lighter version of the original color is `4294966524`, and `4289432973` is the 20% darker color. If you saturate the color by 10%, you get `4293110956`, and if you desaturate by 10%, it is `4293122778`.

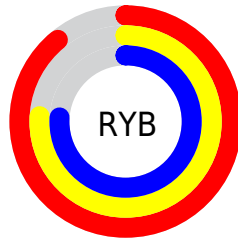
# Distribution



Red (89%)

Green (76%)

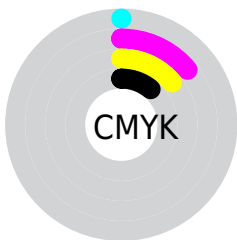
Blue (76%)



Red (89%)

Yellow (76%)

Blue (76%)

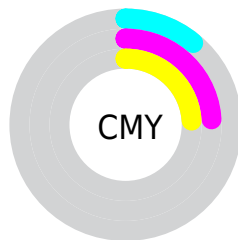


Cyan (0%)

Magenta (14%)

Yellow (14%)

Black (11%)



Cyan (11%)

Magenta (24%)

Yellow (24%)

# Brightness & Saturation Gradients

These gradients show how the Android color 4293116867 changes by changing the brightness by 10 percent. The first figure shows a shift by +10% for each color and the second figure -10%.

Similar to the brightness gradients but the following saturation gradients show a change of the Android color 4293116867 by changing the saturation by 10% instead.



 4293116867

 4293116867

4294967295

 4291274920

 4294966524

 4289432973

 4287722612

 4286012251

 4284367940

 4282723630

 4281276441

 4280025088

 4278190080

 4293116867

 4293116867

 4293110956

 4293122778

 4293105302

 4293128432

 4293099391

 4293132287

 4293093480

 4293087826

 4293081915

 4293076004

 4293070093

 4293066752

# Harmonies

## Analogous

The Analogous color harmony consists of three colors that are next to each other on the color wheel.



4292854735



4293116867



4292920761

# Triad

The Triadic color harmony groups three colors that are evenly spaced from another and form a triangle on the color wheel.



4293116867



4290695100



4290432224

# Complementary

The Complementary color scheme is a pair of colors which are on the opposite of each other on the color wheel.



4293116867



4291027939

# Split Complementary

Split-complementary colors differ from the complementary color scheme. The scheme consists of three colors, the original color and two neighbors of the complement color.



4289843163



4293116867



4290040262

# Square

The Square scheme is like the rectangle color scheme, but the four colors are evenly spaced on the color wheel.



4293116867



4291546293



4289647058



4291348959

# Rectangle

The Rectangle color scheme consists of four colors that form a rectangle on the color wheel.



4293116867



4292593589



4289647058



4290170591



# Sweetspot

The Sweet Spot groups the original color and five complimentary colors.



4293116867



4294964725



4293116899



4286609785



4278190080



4286611584



# Same Dimension

The Same Dimension uses a secret algorithm to generate beautiful new colors.



4293116867



4294956244



4293120963



4285753191



4289921024



4281532416



# Inverse Universe

The Inverse Universe completely reimagines the original color for something new.



4291027939



4292149247



4291023843



4284969843



4278236083

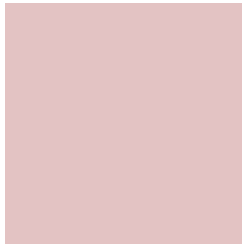


4278203187



# Previews

## White Background



This preview shows how the Android color 4293116867 looks on a white background.

## Color Contrast Check

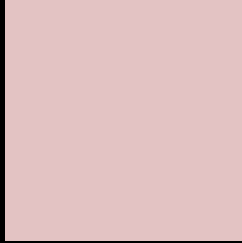
Large Text (above 18pt) WCAG AA × Fail

Any Text WCAG AA × Fail

Large Text (above 18pt) WCAG AAA × Fail

Any Text WCAG AAA × Fail

# Black Background



This preview shows how the Android color 4293116867 looks on a black background.

## Color Contrast Check

Large Text (above 18pt) WCAG AA ✓ Pass

Any Text WCAG AA ✓ Pass

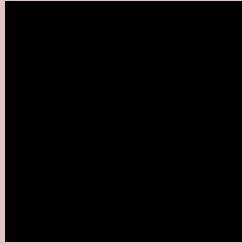
Large Text (above 18pt) WCAG AAA ✓ Pass

Any Text WCAG AAA ✓ Pass

If you want to check with other color combinations, try the [Color Contrast Checker](#).



# Android 4293116867 Background



This preview shows how black text looks on a background with the Android color 4293116867.



This preview shows how white text looks on a background with the Android color 4293116867.

# Color Blindness Simulation

Color vision deficiency is a very complex topic, and I could not describe the different causes any better than Wikipedia does, so if you want to learn more, you should check out their [article about color blindness](#).


## Dichromacy



**Original Color**  
4293116867

**Protanopia**  
4291807943

**Deuteranopia**  
4292986051



**Tritanopia**  
4293247440

# Trichromacy



**Original Color**  
4293116867

**Protanomaly**  
4292265926

**Deuteranomaly**  
4293051587

**Tritanomaly**  
4293182155

# Monochromacy



**Original Color**  
4293116867

**Achromatopsia**  
4291677645

**Achromatomaly**  
4292200905

# CSS Examples

## Text

The CSS property to change the color of the text to Android 4293116867 is called "color". The color property can be set on classes, ids or directly on the HTML element.

This example shows how text in the color `rgb(227, 195, 195)` looks like.

```
.text, #text, p{  
    color:rgb(227, 195, 195)  
}
```

If you want to add a text shadow in that color use the text-shadow property, you can generate a text shadow directly with our [CSS Text Shadow Generator](#).

Here you see how black text with a 4 pixel rgb(227, 195, 195) colored shadow looks like.

```
.shadow{ text-shadow: 4px 4px 2px rgb(227, 195, 195) }
```

## Border

The CSS property to change the border of an element to Android 4293116867 is called "border". The border property can be set on classes, ids or directly on the HTML element.

This example shows the color as border, it can be applied via the CSS property "border" or "border-color".

```
.border, #border, table{ border:4px solid rgb(227, 195, 195) }
```

If only the border color should be changed use the property `border-color`.

```
.border{ border-color:rgb(227, 195, 195) }
```

If you want to add a box shadow in that color use:

Here you see how a box with a 4 pixel `rgb(227, 195, 195)` colored shadow looks like.

```
.boxshadow{ -moz-box-shadow:4px 4px 4px  
4px rgb(227, 195, 195); -webkit-box-  
shadow:4px 4px 4px 4px rgb(227, 195, 195);  
box-shadow:4px 4px 4px 4px rgb(227, 195,  
195) }
```

# Background

The CSS property to change the background color of an element to Android 4293116867 is called "background". The background property can be set on classes, ids or directly on the HTML element.

```
.background, #background, body{  
background: rgb(227, 195, 195) }
```

If only the background color should be changed can be used:

```
.background{ background-color: rgb(227,  
195, 195) }
```

This example shows the color as background, it is applied via the CSS property "background".

To optimize and compress your CSS code, you can use our [online CSS compressor and optimizer](#) based on csstidy. If you want to create a linear or radial gradient as background or border, check our [CSS Gradient Generator](#).



Hey! You found this booklet interesting? Support Converting Colors with the new Membership Option!

The pro membership hides all ads, plus gives you double the colors in the color bucket, and more awesome pro features!

**[Learn more, Memberships starting at \\$2.50/m!](#)**

**Follow me  
on Twitter!**

@ConvertingColor