

# Converting Colors

Android(4293119423)

Have a look what the booklet for  
Android(4293119423) contains.

<b>Android(4293119423)</b> .....	3
<b><i>Conversions</i></b> .....	4
<b><i>Details</i></b> .....	6
<b><i>Harmonies</i></b> .....	11
<b><i>Previews</i></b> .....	23
<b><i>Color Blindness Simulation</i></b> .....	26
<b><i>CSS Examples</i></b> .....	29

# **Color**

**Android(4293119423)**

# Conversions

## Conversions Part 1

Format	Color
Hex	E3CDBF
RGB	227, 205, 191
RGB Percent	89%, 80%, 75%
CMY	0.1098, 0.1961, 0.2510
CMYK	0.00, 0.10, 0.16, 0.11
HSL	23°, 39%, 82%
HSV	23°, 16%, 89%
XYZ	62.9138, 63.7551, 58.2803
YIQ	209.9820, 17.6060, 0.3100

# Conversions

## Conversions Part 2

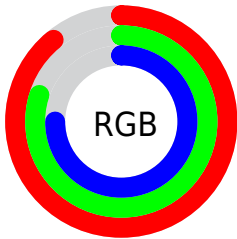
Format	Color
R <sub>Y</sub> B	227, 214, 191
Decimal	14929343
CIE Lab	83.84, 5.42, 9.75
CIE LCh	84, 11.151, 60.947
Yxy	63.7551, 0.3402, 0.3447
Android (android.graphics.Color)	4293119423 (0xFFE3CDBF)
YUV	209.9820, -9.3581, 14.9248
Hunter-Lab	79.8468, 0.9139, 12.6169

# Details

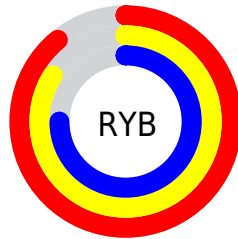
The Android color `4293119423` is a light color, and the websafe version is hex `CCCCCC`. A complement of this color would be `4290762211`, and the grayscale version is `4292006610`.

A 20% lighter version of the original color is `4294967287`, and `4289435530` is the 20% darker color. If you saturate the color by 10%, you get `4293115816`, and if you desaturate by 10%, it is `4293123030`.

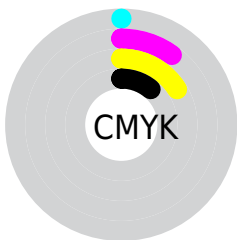
# Distribution



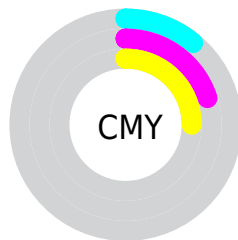
- Red (89%)
- Green (80%)
- Blue (75%)



- Red (89%)
- Yellow (84%)
- Blue (75%)



- Cyan (0%)
- Magenta (10%)
- Yellow (16%)
- Black (11%)



- Cyan (11%)
- Magenta (20%)
- Yellow (25%)

# Brightness & Saturation Gradients

These gradients show how the Android color 4293119423 changes by changing the brightness by 10 percent. The first figure shows a shift by +10% for each color and the second figure -10%.

Similar to the brightness gradients but the following saturation gradients show a change of the Android color 4293119423 by changing the saturation by 10% instead.





4293119423



4293119423

4294967295



4291277476



4294967287



4289435530



4287724912



4286014552



4284369984



4282791210



4281278486



4279961856



4278190080

 4293119423

 4293119423

 4293115816

 4293123030

 4293112210

 4293126636

 4293108603

 4293130239

 4293105252

 4293132287

 4293101646

 4293098039

 4293094432

 4293090825

 4293089280

# Harmonies

## Analogous

The Analogous color harmony consists of three colors that are next to each other on the color wheel.



4293446599



4293119423



4292530364

# Triad

The Triadic color harmony groups three colors that are evenly spaced from another and form a triangle on the color wheel.



4293119423



4290369489



4292136675

# Complementary

The Complementary color scheme is a pair of colors which are on the opposite of each other on the color wheel.



4293119423



4290762211

# Split Complementary

Split-complementary colors differ from the complementary color scheme. The scheme consists of three colors, the original color and two neighbors of the complement color.



4291285734



4293119423



4290238427

# Square

The Square scheme is like the rectangle color scheme, but the four colors are evenly spaced on the color wheel.



4293119423



4290959047



4290565603



4292856795

# Rectangle

The Rectangle color scheme consists of four colors that form a rectangle on the color wheel.



4293119423



4292006845



4290565603



4291809253



# Sweetspot

The Sweet Spot groups the original color and five complimentary colors.



4293119423



4294965234



4293115861



4286610296



4278190080



4286611584

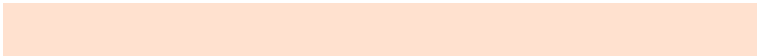


# Same Dimension

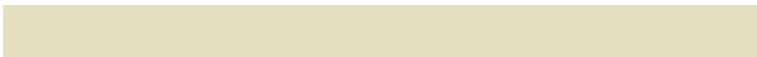
The Same Dimension uses a secret algorithm to generate beautiful new colors.



4293119423



4294959567



4293124031



4285754471



4289938688



4281537536

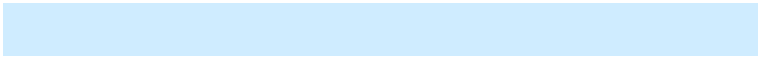


# Inverse Universe

The Inverse Universe completely reimagines the original color for something new.



4290762211



4291816703



4290757603



4284968563



4278218163



4278198067



# Previews

## White Background



This preview shows how the Android color 4293119423 looks on a white background.

## Color Contrast Check

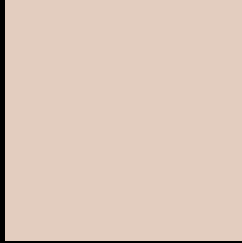
Large Text (above 18pt) WCAG AA × Fail

Any Text WCAG AA × Fail

Large Text (above 18pt) WCAG AAA × Fail

Any Text WCAG AAA × Fail

# Black Background



This preview shows how the Android color 4293119423 looks on a black background.

## Color Contrast Check

Large Text (above 18pt) WCAG AA ✓ Pass

Any Text WCAG AA ✓ Pass

Large Text (above 18pt) WCAG AAA ✓ Pass

Any Text WCAG AAA ✓ Pass

If you want to check with other color combinations, try the [Color Contrast Checker](#).



# Android 4293119423 Background



This preview shows how black text looks on a background with the Android color 4293119423.



This preview shows how white text looks on a background with the Android color 4293119423.

# Color Blindness Simulation

Color vision deficiency is a very complex topic, and I could not describe the different causes any better than Wikipedia does, so if you want to learn more, you should check out their [article about color blindness](#).

## Dichromacy



**Original Color**  
4293119423

**Protanopia**  
4292464833

**Deuteranopia**  
4293708480



**Tritanopia**  
4293315033

# Trichromacy



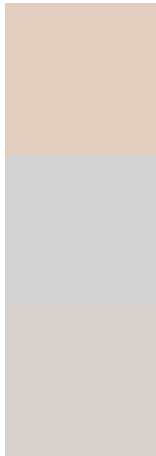
**Original Color**  
4293119423

**Protanomaly**  
4292726720

**Deuteranomaly**  
4293512128

**Tritanomaly**  
4293249744

# Monochromacy



**Original Color**  
4293119423

**Achromatopsia**  
4292006610

**Achromatomaly**  
4292399307

# CSS Examples

## Text

The CSS property to change the color of the text to Android 4293119423 is called "color". The color property can be set on classes, ids or directly on the HTML element.

This example shows how text in the color `rgb(227, 205, 191)` looks like.

```
.text, #text, p{  
    color:rgb(227, 205, 191)  
}
```

If you want to add a text shadow in that color use the text-shadow property, you can generate a text shadow directly with our [CSS Text Shadow Generator](#).

Here you see how black text with a 4 pixel rgb(227, 205, 191) colored shadow looks like.

```
.shadow{ text-shadow: 4px 4px 2px rgb(227, 205, 191) }
```

## Border

The CSS property to change the border of an element to Android 4293119423 is called "border". The border property can be set on classes, ids or directly on the HTML element.

This example shows the color as border, it can be applied via the CSS property "border" or "border-color".

```
.border, #border, table{ border:4px solid rgb(227, 205, 191) }
```

If only the border color should be changed use the property `border-color`.

```
.border{ border-color:rgb(227, 205, 191) }
```

If you want to add a box shadow in that color use:

Here you see how a box with a 4 pixel `rgb(227, 205, 191)` colored shadow looks like.

```
.boxshadow{ -moz-box-shadow:4px 4px 4px 4px rgb(227, 205, 191); -webkit-box-shadow:4px 4px 4px 4px rgb(227, 205, 191); box-shadow:4px 4px 4px 4px rgb(227, 205, 191) }
```

# Background

The CSS property to change the background color of an element to Android 4293119423 is called "background". The background property can be set on classes, ids or directly on the HTML element.

```
.background, #background, body{  
background: rgb(227, 205, 191) }
```

If only the background color should be changed can be used:

```
.background{ background-color: rgb(227,  
205, 191) }
```

This example shows the color as background, it is applied via the CSS property "background".

To optimize and compress your CSS code, you can use our [online CSS compressor and optimizer](#) based on csstidy. If you want to create a linear or radial gradient as background or border, check our [CSS Gradient Generator](#).



Hey! You found this booklet interesting? Support Converting Colors with the new Membership Option!

The pro membership hides all ads, plus gives you double the colors in the color bucket, and more awesome pro features!

**[Learn more, Memberships starting at \\$2.50/m!](#)**

**Follow me  
on Twitter!**

@ConvertingColor