

Converting Colors

Android(4293120727)

Have a look what the booklet for
Android(4293120727) contains.

Android(4293120727)	3
<i>Conversions</i>	4
<i>Details</i>	6
<i>Harmonies</i>	11
<i>Previews</i>	23
<i>Color Blindness Simulation</i>	26
<i>CSS Examples</i>	29

Color

Android(4293120727)

Conversions

Conversions Part 1

Format	Color
Hex	E3D2D7
RGB	227, 210, 215
RGB Percent	89%, 82%, 84%
CMY	0.1098, 0.1765, 0.1569
CMYK	0.00, 0.07, 0.05, 0.11
HSL	342°, 23%, 86%
HSV	342°, 7%, 89%
XYZ	66.9909, 67.3304, 73.7552
YIQ	215.6530, 8.5270, 5.1590

Conversions

Conversions Part 2

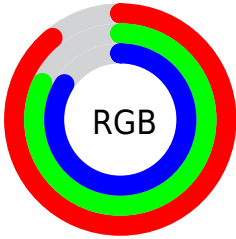
Format	Color
R _Y B	227, 210, 215
Decimal	14930647
CIE Lab	85.67, 6.73, -0.35
CIE LCh	86, 6.743, 356.998
Yxy	67.3304, 0.3220, 0.3236
Android (android.graphics.Color)	4293120727 (0xFFE3D2D7)
YUV	215.6530, -0.3219, 9.9513
Hunter-Lab	82.0551, 2.1334, 4.1457

Details

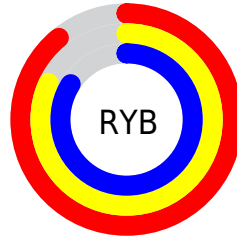
The Android color `4293120727` is a light color, and the websafe version is hex `CCCCCC`. A complement of this color would be `4292010974`, and the grayscale version is `4292401368`.

A 20% lighter version of the original color is `4294967295`, and `4289502368` is the 20% darker color. If you saturate the color by 10%, you get `4293114823`, and if you desaturate by 10%, it is `4293126631`.

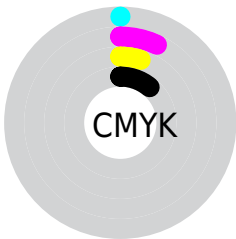
Distribution



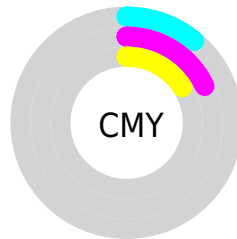
- Red (89%)
- Green (82%)
- Blue (84%)



- Red (89%)
- Yellow (82%)
- Blue (84%)



- Cyan (0%)
- Magenta (7%)
- Yellow (5%)
- Black (11%)



- Cyan (11%)
- Magenta (18%)
- Yellow (16%)

Brightness & Saturation Gradients

These gradients show how the Android color 4293120727 changes by changing the brightness by 10 percent. The first figure shows a shift by +10% for each color and the second figure -10%.

Similar to the brightness gradients but the following saturation gradients show a change of the Android color 4293120727 by changing the saturation by 10% instead.

 4293120727

 4293120727

4294967295

 4291278523

 4289502368

 4287726214

 4286015597

 4284436565

 4282857790

 4281345064

 4280028947

 4278190080

 4293120727

 4293120727

 4293114823

 4293126631

 4293109175

 4293132279

 4293103271

 4293132287

 4293097367

 4293091463

 4293085815

 4293079911

 4293074007

 4293068359

Harmonies

Analogous

The Analogous color harmony consists of three colors that are next to each other on the color wheel.



4292793309



4293120727



4293186257

Triad

The Triadic color harmony groups three colors that are evenly spaced from another and form a triangle on the color wheel.



4293120727



4292204747



4291418593

Complementary

The Complementary color scheme is a pair of colors which are on the opposite of each other on the color wheel.



4293120727



4292010974

Split Complementary

Split-complementary colors differ from the complementary color scheme. The scheme consists of three colors, the original color and two neighbors of the complement color.



4291287772



4293120727



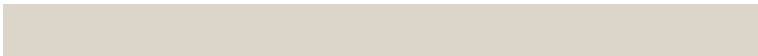
4291746255

Square

The Square scheme is like the rectangle color scheme, but the four colors are evenly spaced on the color wheel.



4293120727



4292662730



4291418837



4291811299

Rectangle

The Rectangle color scheme consists of four colors that form a rectangle on the color wheel.



4293120727



4293120973



4291418837



4291353055

Sweetspot

The Sweet Spot groups the original color and five complimentary colors.



4293120727



4294966011



4292793059



4286610814



4278190080



4286611584

Same Dimension

The Same Dimension uses a secret algorithm to generate beautiful new colors.



4293120727



4294961391



4293121490



4285753195



4289921077



4281532431

Inverse Universe

The Inverse Universe completely reimagines the original color for something new.



4293120727



4294961391



4292010211



4285753195



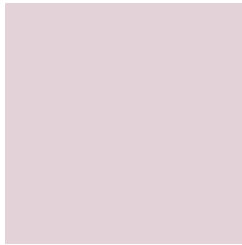
4289921077



4281532431

Previews

White Background



This preview shows how the Android color 4293120727 looks on a white background.

Color Contrast Check

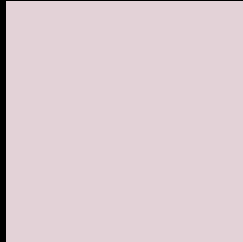
Large Text (above 18pt) WCAG AA × Fail

Any Text WCAG AA × Fail

Large Text (above 18pt) WCAG AAA × Fail

Any Text WCAG AAA × Fail

Black Background



This preview shows how the Android color 4293120727 looks on a black background.

Color Contrast Check

Large Text (above 18pt) WCAG AA ✓ Pass

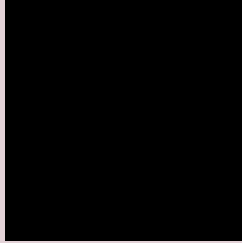
Any Text WCAG AA ✓ Pass

Large Text (above 18pt) WCAG AAA ✓ Pass

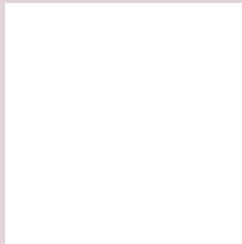
Any Text WCAG AAA ✓ Pass

If you want to check with other color combinations, try the [Color Contrast Checker](#).

Android 4293120727 Background



This preview shows how black text looks on a background with the Android color 4293120727.



This preview shows how white text looks on a background with the Android color 4293120727.

Color Blindness Simulation

Color vision deficiency is a very complex topic, and I could not describe the different causes any better than Wikipedia does, so if you want to learn more, you should check out their [article about color blindness](#).

Dichromacy



Original Color
4293120727

Protanopia
4292466137

Deuteranopia
4293578712



Tritanopia
4293185761

Trichromacy



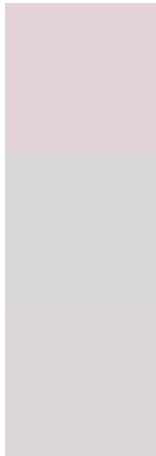
Original Color
4293120727

Protanomaly
4292728024

Deuteranomaly
4293382360

Tritanomaly
4293186013

Monochromacy



Original Color
4293120727

Achromatopsia
4292401368

Achromatomaly
4292663000

CSS Examples

Text

The CSS property to change the color of the text to Android 4293120727 is called "color". The color property can be set on classes, ids or directly on the HTML element.

This example shows how text in the color `rgb(227, 210, 215)` looks like.

```
.text, #text, p{  
    color:rgb(227, 210, 215)  
}
```

If you want to add a text shadow in that color use the text-shadow property, you can generate a text shadow directly with our [CSS Text Shadow Generator](#).

Here you see how black text with a 4 pixel rgb(227, 210, 215) colored shadow looks like.

```
.shadow{ text-shadow: 4px 4px 2px rgb(227, 210, 215) }
```

Border

The CSS property to change the border of an element to Android 4293120727 is called "border". The border property can be set on classes, ids or directly on the HTML element.

This example shows the color as border, it can be applied via the CSS property "border" or "border-color".

```
.border, #border, table{ border:4px solid rgb(227, 210, 215) }
```

If only the border color should be changed use the property `border-color`.

```
.border{ border-color:rgb(227, 210, 215) }
```

If you want to add a box shadow in that color use:

Here you see how a box with a 4 pixel `rgb(227, 210, 215)` colored shadow looks like.

```
.boxshadow{ -moz-box-shadow:4px 4px 4px  
4px rgb(227, 210, 215); -webkit-box-  
shadow:4px 4px 4px 4px rgb(227, 210, 215);  
box-shadow:4px 4px 4px 4px rgb(227, 210,  
215) }
```

Background

The CSS property to change the background color of an element to Android 4293120727 is called "background". The background property can be set on classes, ids or directly on the HTML element.

```
.background, #background, body{  
background: rgb(227, 210, 215) }
```

If only the background color should be changed can be used:

```
.background{ background-color: rgb(227,  
210, 215) }
```

This example shows the color as background, it is applied via the CSS property "background".

To optimize and compress your CSS code, you can use our [online CSS compressor and optimizer](#) based on csstidy. If you want to create a linear or radial gradient as background or border, check our [CSS Gradient Generator](#).

Hey! You found this booklet interesting? Support Converting Colors with the new Membership Option!

The pro membership hides all ads, plus gives you double the colors in the color bucket, and more awesome pro features!

[Learn more, Memberships starting at \\$2.50/m!](#)

**Follow me
on Twitter!**

@ConvertingColor