

# Converting Colors

Android(4293155990)

Have a look what the booklet for  
Android(4293155990) contains.

<b>Android(4293155990)</b> .....	3
<i><b>Conversions</b></i> .....	4
<i><b>Details</b></i> .....	6
<i><b>Harmonies</b></i> .....	11
<i><b>Previews</b></i> .....	23
<i><b>Color Blindness Simulation</b></i> .....	26
<i><b>CSS Examples</b></i> .....	29

# **Color**

**Android(4293155990)**

# Conversions

## Conversions Part 1

Format	Color
Hex	E45C96
RGB	228, 92, 150
RGB Percent	89%, 36%, 59%
CMY	0.1059, 0.6392, 0.4118
CMYK	0.00, 0.60, 0.34, 0.11
HSL	334°, 72%, 63%
HSV	334°, 60%, 89%
XYZ	41.3271, 26.3503, 31.7621
YIQ	139.2760, 62.4380, 46.8700

# Conversions

## Conversions Part 2

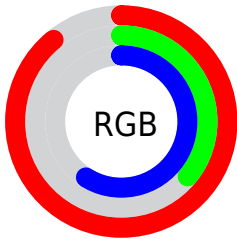
<b>Format</b>	<b>Color</b>
R <sub>Y</sub> B	228, 92, 150
Decimal	14965910
CIE Lab	58.37, 58.24, -4.42
CIE LCh	58, 58.409, 355.659
Yxy	26.3503, 0.4156, 0.2650
Android (android.graphics.Color)	4293155990 (0xFFE45C96)
YUV	139.2760, 5.2869, 77.8109
Hunter-Lab	51.3325, 53.8759, -0.7530

# Details

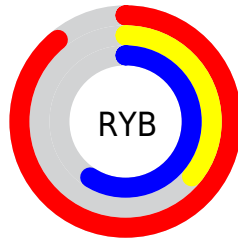
The Android color `4293155990` is a light color, and the websafe version is hex `FF6699`. The color can be described as light muted rose. A complement of this color would be `4284277930`, and the grayscale version is `4287335307`.

A 20% lighter version of the original color is `4294939852`, and `4289273699` is the 20% darker color. If you saturate the color by 10%, you get `4293150089`, and if you desaturate by 10%, it is `4293161891`.

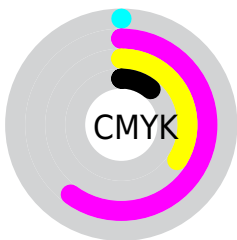
# Distribution



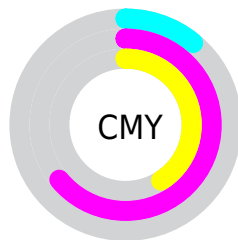
- Red (89%)
- Green (36%)
- Blue (59%)



- Red (89%)
- Yellow (36%)
- Blue (59%)



- Cyan (0%)
- Magenta (60%)
- Yellow (34%)
- Black (11%)



- Cyan (11%)
- Magenta (64%)
- Yellow (41%)

# Brightness & Saturation Gradients

These gradients show how the Android color 4293155990 changes by changing the brightness by 10 percent. The first figure shows a shift by +10% for each color and the second figure -10%.


Similar to the brightness gradients but the following saturation gradients show a change of the Android color 4293155990 by changing the saturation by 10% instead.



 4293155990

 4293155990

4294967295

 4291182716

 4294939852

 4289273699

 4294947048


 4287365196

 4294954495

 4285464629

 4294961919

 4283629600

 4281991174

 4279435264

 4278190080

 4293155990

 4293155990

 4293150089

 4293161891

 4293144188

 4293167792

 4293138543

 4293173437

 4293132642

 4293179338

 4293132385

 4293185239

 4293191140

 4293197042

 4293197823

# Harmonies

## Analogous

The Analogous color harmony consists of three colors that are next to each other on the color wheel.



4290997191



4293155990



4293353571

# Triad

The Triadic color harmony groups three colors that are evenly spaced from another and form a triangle on the color wheel.



4293155990



4286354982



4278231264

# Complementary

The Complementary color scheme is a pair of colors which are on the opposite of each other on the color wheel.



4293155990



4284277930

# Split Complementary

Split-complementary colors differ from the complementary color scheme. The scheme consists of three colors, the original color and two neighbors of the complement color.



4278232247



4293155990



4281638992

# Square

The Square scheme is like the rectangle color scheme, but the four colors are evenly spaced on the color wheel.



4293155990



4289562394



4278232195



4278228211

# Rectangle

The Rectangle color scheme consists of four colors that form a rectangle on the color wheel.



4293155990



4292635717



4278232195



4278231765



# Sweetspot

The Sweet Spot groups the original color and five complimentary colors.



4293155990



4294955493



4289289444



4286604143



4278190080



4286611584



# Same Dimension

The Same Dimension uses a secret algorithm to generate beautiful new colors.



4293155990



4294920086



4293158236



4285753196



4289921100



4281532438



# Inverse Universe

The Inverse Universe completely reimagines the original color for something new.



4293155990



4294920086



4284275684



4285753196



4289921100



4281532438



# Previews

## White Background



This preview shows how the Android color 4293155990 looks on a white background.

## Color Contrast Check

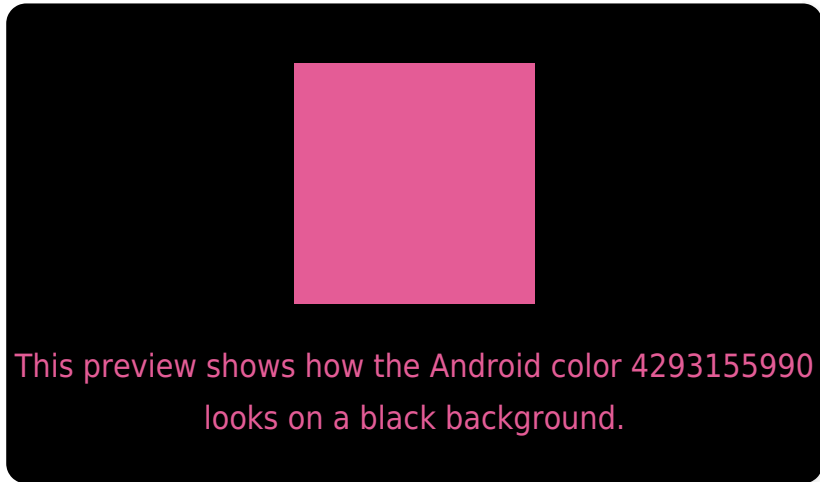
Large Text (above 18pt) WCAG AA ✓ Pass

Any Text WCAG AA ✗ Fail

Large Text (above 18pt) WCAG AAA ✗ Fail

Any Text WCAG AAA ✗ Fail

# Black Background



## Color Contrast Check

Large Text (above 18pt) WCAG AA ✓ Pass

Any Text WCAG AA ✓ Pass

Large Text (above 18pt) WCAG AAA ✓ Pass

Any Text WCAG AAA × Fail

If you want to check with other color combinations, try the [Color Contrast Checker](#).



# Android 4293155990 Background



This preview shows how black text looks on a background with the Android color 4293155990.



This preview shows how white text looks on a background with the Android color 4293155990.

# Color Blindness Simulation

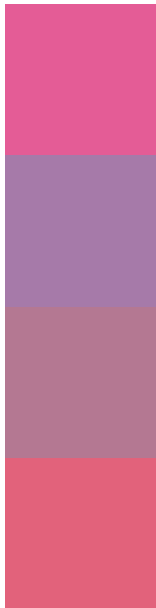
Color vision deficiency is a very complex topic, and I could not describe the different causes any better than Wikipedia does, so if you want to learn more, you should check out their [article about color blindness](#).

## Dichromacy





# Trichromacy



**Original Color**  
4293155990

**Protanomaly**  
4289100457

**Deuteranomaly**  
4290017426

**Tritanomaly**  
4293026427

# Monochromacy



**Original Color**  
4293155990

**Achromatopsia**  
4287335307

**Achromatomaly**  
4289428111

# CSS Examples

## Text

The CSS property to change the color of the text to Android 4293155990 is called "color". The color property can be set on classes, ids or directly on the HTML element.

This example shows how text in the color `rgb(228, 92, 150)` looks like.

```
.text, #text, p{  
    color:rgb(228, 92, 150)  
}
```

If you want to add a text shadow in that color use the text-shadow property, you can generate a text shadow directly with our [CSS Text Shadow Generator](#).

Here you see how black text with a 4 pixel rgb(228, 92, 150) colored shadow looks like.

```
.shadow{ text-shadow: 4px 4px 2px rgb(228, 92, 150) }
```

## Border

The CSS property to change the border of an element to Android 4293155990 is called "border". The border property can be set on classes, ids or directly on the HTML element.

This example shows the color as border, it can be applied via the CSS property "border" or "border-color".

```
.border, #border, table{ border:4px solid rgb(228, 92, 150) }
```

If only the border color should be changed use the property `border-color`.

```
.border{ border-color:rgb(228, 92, 150) }
```

If you want to add a box shadow in that color use:

Here you see how a box with a 4 pixel `rgb(228, 92, 150)` colored shadow looks like.

```
.boxshadow{ -moz-box-shadow:4px 4px 4px  
4px rgb(228, 92, 150); -webkit-box-  
shadow:4px 4px 4px 4px rgb(228, 92, 150);  
box-shadow:4px 4px 4px 4px rgb(228, 92,  
150) }
```

# Background

The CSS property to change the background color of an element to Android 4293155990 is called "background". The background property can be set on classes, ids or directly on the HTML element.

```
.background, #background, body{  
background: rgb(228, 92, 150) }
```

If only the background color should be changed can be used:

```
.background{ background-color: rgb(228, 92,  
150) }
```

This example shows the color as background, it is applied via the CSS property "background".

To optimize and compress your CSS code, you can use our [online CSS compressor and optimizer](#) based on csstidy. If you want to create a linear or radial gradient as background or border, check our [CSS Gradient Generator](#).



Hey! You found this booklet interesting? Support Converting Colors with the new Membership Option!

The pro membership hides all ads, plus gives you double the colors in the color bucket, and more awesome pro features!

**[Learn more, Memberships starting at \\$2.50/m!](#)**

**Follow me  
on Twitter!**

@ConvertingColor