

Converting Colors

Android(4293156473)

Have a look what the booklet for
Android(4293156473) contains.

Android(4293156473)	3
<i>Conversions</i>	4
<i>Details</i>	6
<i>Harmonies</i>	11
<i>Previews</i>	23
<i>Color Blindness Simulation</i>	26
<i>CSS Examples</i>	29

Color

Android(4293156473)

Conversions

Conversions Part 1

Format	Color
Hex	E45E79
RGB	228, 94, 121
RGB Percent	89%, 37%, 47%
CMY	0.1059, 0.6314, 0.5255
CMYK	0.00, 0.59, 0.47, 0.11
HSL	348°, 71%, 63%
HSV	348°, 59%, 89%
XYZ	39.4488, 25.8799, 21.0053
YIQ	137.1440, 71.1970, 36.8050

Conversions

Conversions Part 2

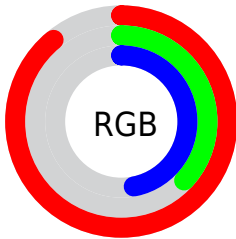
Format	Color
R_{YB}	228, 94, 121
Decimal	14966393
CIE _{Lab}	57.92, 54.33, 11.89
CIE _{LCh}	58, 55.618, 12.344
Yxy	25.8799, 0.4569, 0.2998
Android (android.graphics.Color)	4293156473 (0xFFE45E79)
YUV	137.1440, -7.9590, 79.6807
Hunter-Lab	50.8723, 49.3911, 11.1296

Details

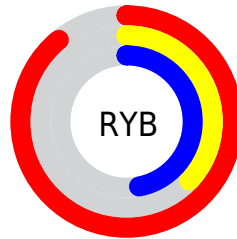
The Android color **4293156473** is a dark color, and the websafe version is hex **FF6699**. The color can be described as middle muted rose. A complement of this color would be **4284409033**, and the grayscale version is **4287203721**.

A 20% lighter version of the original color is **4294940077**, and **4289209417** is the 20% darker color. If you saturate the color by 10%, you get **4293150567**, and if you desaturate by 10%, it is **4293162379**.

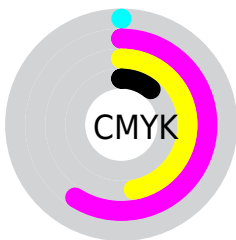
Distribution



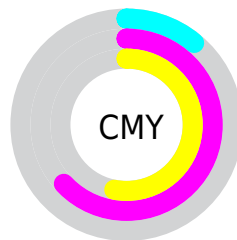
- Red (89%)
- Green (37%)
- Blue (47%)



- Red (89%)
- Yellow (37%)
- Blue (47%)



- Cyan (0%)
- Magenta (59%)
- Yellow (47%)
- Black (11%)



- Cyan (11%)
- Magenta (63%)
- Yellow (53%)

Brightness & Saturation Gradients

These gradients show how the Android color 4293156473 changes by changing the brightness by 10 percent. The first figure shows a shift by +10% for each color and the second figure -10%.

Similar to the brightness gradients but the following saturation gradients show a change of the Android color 4293156473 by changing the saturation by 10% instead.

 4293156473

 4293156473

4294967295

 4291183200

 4294940077

 4289209417

 4294947272

 4287234098

 4294954724

 4285333534

 4294962175

 4283498500

 4281729026

 4278583296

 4278190080

 4293156473

 4293156473

 4293150567

 4293162379

 4293144661

 4293168285

 4293139010

 4293173936

 4293133104

 4293179842

 4293132334

 4293185748

 4293191654

 4293197560

 4293197823

Harmonies

Analogous

The Analogous color harmony consists of three colors that are next to each other on the color wheel.



4292174762



4293156473



4292504396

Triad

The Triadic color harmony groups three colors that are evenly spaced from another and form a triangle on the color wheel.



4293156473



4284258879



4278229224

Complementary

The Complementary color scheme is a pair of colors which are on the opposite of each other on the color wheel.



4293156473



4284409033

Split Complementary

Split-complementary colors differ from the complementary color scheme. The scheme consists of three colors, the original color and two neighbors of the complement color.



4278231244



4293156473



4278231404

Square

The Square scheme is like the rectangle color scheme, but the four colors are evenly spaced on the color wheel.



4293156473



4287794978



4278231966



4283599594

Rectangle

The Rectangle color scheme consists of four colors that form a rectangle on the color wheel.



4293156473



4291328051



4278231966



4278230241

Sweetspot

The Sweet Spot groups the original color and five complimentary colors.



4293156473



4294955482



4291256036



4286604137



4278190080



4286611584

Same Dimension

The Same Dimension uses a secret algorithm to generate beautiful new colors.



4293156473



4294920814



4293166174



4285753194



4289921060



4281532426

Inverse Universe

The Inverse Universe completely reimagines the original color for something new.



4293156473



4294920814



4284399332



4285753194



4289921060



4281532426

Previews

White Background



This preview shows how the Android color 4293156473 looks on a white background.

Color Contrast Check

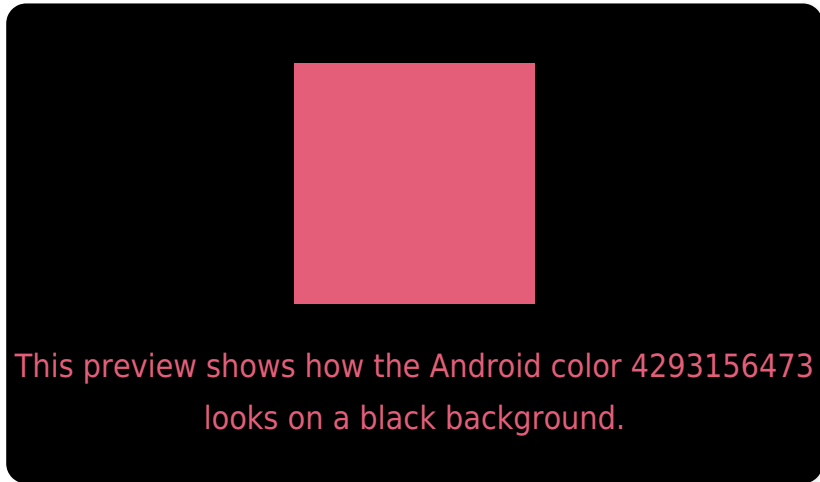
Large Text (above 18pt) WCAG AA ✓ Pass

Any Text WCAG AA ✗ Fail

Large Text (above 18pt) WCAG AAA ✗ Fail

Any Text WCAG AAA ✗ Fail

Black Background



Color Contrast Check

Large Text (above 18pt) WCAG AA ✓ Pass

Any Text WCAG AA ✓ Pass

Large Text (above 18pt) WCAG AAA ✓ Pass

Any Text WCAG AAA × Fail

If you want to check with other color combinations, try the [Color Contrast Checker](#).

Android 4293156473 Background



This preview shows how black text looks on a background with the Android color 4293156473.



This preview shows how white text looks on a background with the Android color 4293156473.

Color Blindness Simulation

Color vision deficiency is a very complex topic, and I could not describe the different causes any better than Wikipedia does, so if you want to learn more, you should check out their [article about color blindness](#).

Dichromacy

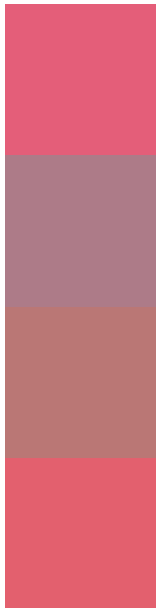


Original Color
4293156473

Protanopia
4287466385

Deuteranopia
4288841331

Trichromacy



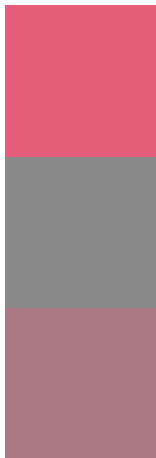
Original Color
4293156473

Protanomaly
4289559432

Deuteranomaly
4290410357

Tritanomaly
4293091438

Monochromacy



Original Color
4293156473

Achromatopsia
4287203721

Achromatomaly
4289362307

CSS Examples

Text

The CSS property to change the color of the text to Android 4293156473 is called "color". The color property can be set on classes, ids or directly on the HTML element.

This example shows how text in the color `rgb(228, 94, 121)` looks like.

```
.text, #text, p{  
    color:rgb(228, 94, 121)  
}
```

If you want to add a text shadow in that color use the text-shadow property, you can generate a text shadow directly with our [CSS Text Shadow Generator](#).

Here you see how black text with a 4 pixel rgb(228, 94, 121) colored shadow looks like.

```
.shadow{ text-shadow: 4px 4px 2px rgb(228, 94, 121) }
```

Border

The CSS property to change the border of an element to Android 4293156473 is called "border". The border property can be set on classes, ids or directly on the HTML element.

This example shows the color as border, it can be applied via the CSS property "border" or "border-color".

```
.border, #border, table{ border:4px solid rgb(228, 94, 121) }
```

If only the border color should be changed use the property `border-color`.

```
.border{ border-color:rgb(228, 94, 121) }
```

If you want to add a box shadow in that color use:

Here you see how a box with a 4 pixel `rgb(228, 94, 121)` colored shadow looks like.

```
.boxshadow{ -moz-box-shadow:4px 4px 4px  
4px rgb(228, 94, 121); -webkit-box-  
shadow:4px 4px 4px 4px rgb(228, 94, 121);  
box-shadow:4px 4px 4px 4px rgb(228, 94,  
121) }
```

Background

The CSS property to change the background color of an element to Android 4293156473 is called "background". The background property can be set on classes, ids or directly on the HTML element.

```
.background, #background, body{  
background: rgb(228, 94, 121) }
```

If only the background color should be changed can be used:

```
.background{ background-color: rgb(228, 94,  
121) }
```

This example shows the color as background, it is applied via the CSS property "background".

To optimize and compress your CSS code, you can use our [online CSS compressor and optimizer](#) based on csstidy. If you want to create a linear or radial gradient as background or border, check our [CSS Gradient Generator](#).

Hey! You found this booklet interesting? Support Converting Colors with the new Membership Option!

The pro membership hides all ads, plus gives you double the colors in the color bucket, and more awesome pro features!

[Learn more, Memberships starting at \\$2.50/m!](#)

**Follow me
on Twitter!**

@ConvertingColor