

# Converting Colors

Android(4293159070)

Have a look what the booklet for  
Android(4293159070) contains.

<b>Android(4293159070)</b> .....	3
<i><b>Conversions</b></i> .....	4
<i><b>Details</b></i> .....	6
<i><b>Harmonies</b></i> .....	11
<i><b>Previews</b></i> .....	23
<i><b>Color Blindness Simulation</b></i> .....	26
<i><b>CSS Examples</b></i> .....	29

# **Color**

**Android(4293159070)**

# Conversions

## Conversions Part 1

Format	Color
Hex	E4689E
RGB	228, 104, 158
RGB Percent	89%, 41%, 62%
CMY	0.1059, 0.5922, 0.3804
CMYK	0.00, 0.54, 0.31, 0.11
HSL	334°, 70%, 65%
HSV	334°, 54%, 89%
XYZ	43.1168, 28.8632, 35.6464
YIQ	147.2320, 56.5700, 43.0820

# Conversions

## Conversions Part 2

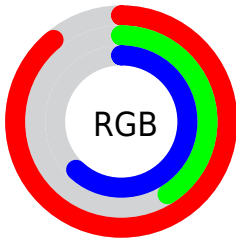
<b>Format</b>	<b>Color</b>
R <sub>Y</sub> B	228, 104, 158
Decimal	14968990
CIE Lab	60.66, 53.75, -5.67
CIE LCh	61, 54.048, 353.980
Yxy	28.8632, 0.4006, 0.2682
Android (android.graphics.Color)	4293159070 (0xFFE4689E)
YUV	147.2320, 5.3086, 70.8335
Hunter-Lab	53.7245, 49.2378, -1.7320

# Details

The Android color **4293159070** is a light color, and the websafe version is hex **CC6699**. A complement of this color would be **4285064366**, and the grayscale version is **4287861651**.

A 20% lighter version of the original color is **4294942677**, and **4289278059** is the 20% darker color. If you saturate the color by 10%, you get **4293153169**, and if you desaturate by 10%, it is **4293164971**.

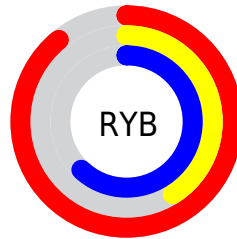
# Distribution



Red (89%)

Green (41%)

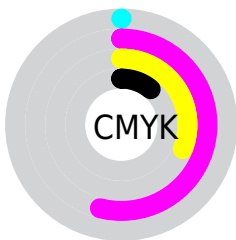
Blue (62%)



Red (89%)

Yellow (41%)

Blue (62%)

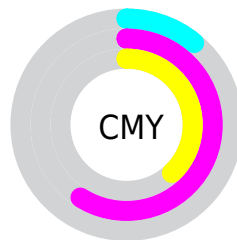


Cyan (0%)

Magenta (54%)

Yellow (31%)

Black (11%)



Cyan (11%)

Magenta (59%)

Yellow (38%)

# Brightness & Saturation Gradients

These gradients show how the Android color 4293159070 changes by changing the brightness by 10 percent. The first figure shows a shift by +10% for each color and the second figure -10%.

Similar to the brightness gradients but the following saturation gradients show a change of the Android color 4293159070 by changing the saturation by 10% instead.



 4293159070

 4293159070

4294967295

 4291186052

 4294942677

 4289278059

 4294949873

 4287433811

 4294957311

 4285530172

 4294964735

 4283760678

 4282122257

 4279959553

 4278190080

 4293159070

 4293159070

 4293153169

 4293164971

 4293147268

 4293170872

 4293141623

 4293176517

 4293135723

 4293182417

 4293132387

 4293188318

 4293194219

 4293197816

 4293197823

# Harmonies

## Analogous

The Analogous color harmony consists of three colors that are next to each other on the color wheel.



429100011



4293159070



4293487214

# Triad

The Triadic color harmony groups three colors that are evenly spaced from another and form a triangle on the color wheel.



4293159070



4287077173



4278232543

# Complementary

The Complementary color scheme is a pair of colors which are on the opposite of each other on the color wheel.



4293159070



4285064366

# Split Complementary

Split-complementary colors differ from the complementary color scheme. The scheme consists of three colors, the original color and two neighbors of the complement color.



4278233528



4293159070



4283081816

# Square

The Square scheme is like the rectangle color scheme, but the four colors are evenly spaced on the color wheel.



4293159070



4290022701



4278233479



4278229745

# Rectangle

The Rectangle color scheme consists of four colors that form a rectangle on the color wheel.



4293159070



4292834386



4278233479



4278233043



# Sweetspot

The Sweet Spot groups the original color and five complimentary colors.



4293159070



4294956776



4289489124



4286605170



4278190080



4286611584



# Same Dimension

The Same Dimension uses a secret algorithm to generate beautiful new colors.



4293159070



4294924705



4293160552



4285753196



4289921102



4281532438



# Inverse Universe

The Inverse Universe completely reimagines the original color for something new.



4293159070



4294924705



4285062884



4285753196



4289921102



4281532438



# Previews

## White Background



This preview shows how the Android color 4293159070 looks on a white background.

## Color Contrast Check

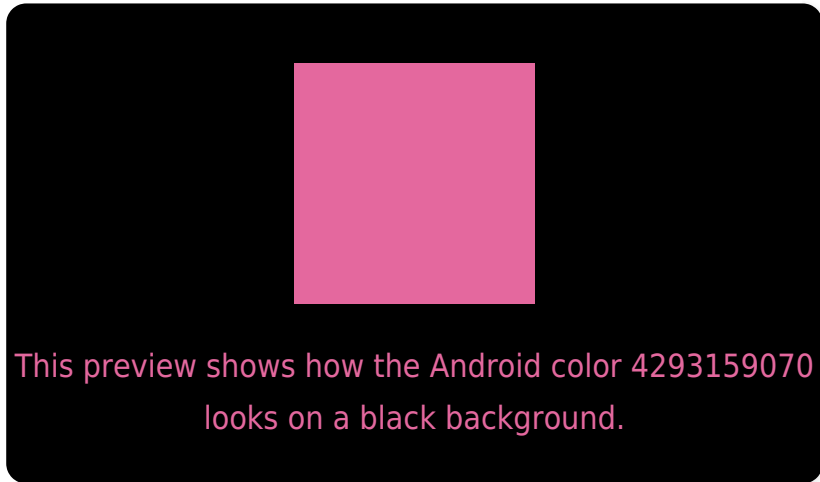
Large Text (above 18pt) WCAG AA ✓ Pass

Any Text WCAG AA ✗ Fail

Large Text (above 18pt) WCAG AAA ✗ Fail

Any Text WCAG AAA ✗ Fail

# Black Background



## Color Contrast Check

Large Text (above 18pt) WCAG AA ✓ Pass

Any Text WCAG AA ✓ Pass

Large Text (above 18pt) WCAG AAA ✓ Pass

Any Text WCAG AAA × Fail

If you want to check with other color combinations, try the [Color Contrast Checker](#).



# Android 4293159070 Background



This preview shows how black text looks on a background with the Android color 4293159070.



This preview shows how white text looks on a background with the Android color 4293159070.

# Color Blindness Simulation

Color vision deficiency is a very complex topic, and I could not describe the different causes any better than Wikipedia does, so if you want to learn more, you should check out their [article about color blindness](#).

## Dichromacy



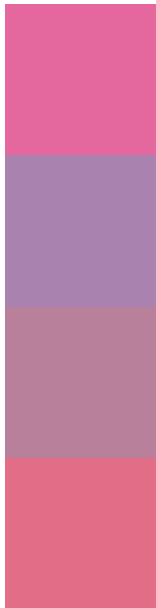
**Original Color**  
4293159070

**Protanopia**  
4287205817

**Deuteranopia**  
4288646808



# Trichromacy



**Original Color**  
4293159070

**Protanomaly**  
4289364655

**Deuteranomaly**  
4290281626

**Tritanomaly**  
4293029254

# Monochromacy



**Original Color**  
4293159070

**Achromatopsia**  
4287861651

**Achromatomaly**  
4289758103

# CSS Examples

## Text

The CSS property to change the color of the text to Android 4293159070 is called "color". The color property can be set on classes, ids or directly on the HTML element.

This example shows how text in the color `rgb(228, 104, 158)` looks like.

```
.text, #text, p{  
    color:rgb(228, 104, 158)  
}
```

If you want to add a text shadow in that color use the text-shadow property, you can generate a text shadow directly with our [CSS Text Shadow Generator](#).

Here you see how black text with a 4 pixel rgb(228, 104, 158) colored shadow looks like.

```
.shadow{ text-shadow: 4px 4px 2px rgb(228, 104, 158) }
```

## Border

The CSS property to change the border of an element to Android 4293159070 is called "border". The border property can be set on classes, ids or directly on the HTML element.

This example shows the color as border, it can be applied via the CSS property "border" or "border-color".

```
.border, #border, table{ border:4px solid rgb(228, 104, 158) }
```

If only the border color should be changed use the property `border-color`.

```
.border{ border-color:rgb(228, 104, 158) }
```

If you want to add a box shadow in that color use:

Here you see how a box with a 4 pixel `rgb(228, 104, 158)` colored shadow looks like.

```
.boxshadow{ -moz-box-shadow:4px 4px 4px  
4px rgb(228, 104, 158); -webkit-box-  
shadow:4px 4px 4px 4px rgb(228, 104, 158);  
box-shadow:4px 4px 4px 4px rgb(228, 104,  
158) }
```

# Background

The CSS property to change the background color of an element to Android 4293159070 is called "background". The background property can be set on classes, ids or directly on the HTML element.

```
.background, #background, body{  
background: rgb(228, 104, 158) }
```

If only the background color should be changed can be used:

```
.background{ background-color: rgb(228,  
104, 158) }
```

This example shows the color as background, it is applied via the CSS property "background".

To optimize and compress your CSS code, you can use our [online CSS compressor and optimizer](#) based on csstidy. If you want to create a linear or radial gradient as background or border, check our [CSS Gradient Generator](#).



Hey! You found this booklet interesting? Support Converting Colors with the new Membership Option!

The pro membership hides all ads, plus gives you double the colors in the color bucket, and more awesome pro features!

**[Learn more, Memberships starting at \\$2.50/m!](#)**

**Follow me  
on Twitter!**

@ConvertingColor