

Converting Colors

Android(4293159314)

Have a look what the booklet for
Android(4293159314) contains.

Android(4293159314)	3
<i>Conversions</i>	4
<i>Details</i>	6
<i>Harmonies</i>	11
<i>Previews</i>	23
<i>Color Blindness Simulation</i>	26
<i>CSS Examples</i>	29

Color

Android(4293159314)

Conversions

Conversions Part 1

Format	Color
Hex	E46992
RGB	228, 105, 146
RGB Percent	89%, 41%, 57%
CMY	0.1059, 0.5882, 0.4275
CMYK	0.00, 0.54, 0.36, 0.11
HSL	340°, 69%, 65%
HSV	340°, 54%, 89%
XYZ	42.2348, 28.6725, 30.5024
YIQ	146.4510, 60.1470, 38.8270

Conversions

Conversions Part 2

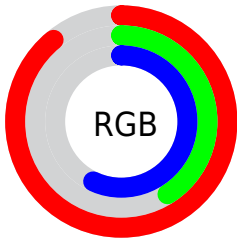
Format	Color
RYB	228, 105, 146
Decimal	14969234
CIELab	60.49, 51.84, 1.02
CIElCh	60, 51.852, 1.124
Yxy	28.6725, 0.4165, 0.2827
Android (android.graphics.Color)	4293159314 (0xFFE46992)
YUV	146.4510, -0.2223, 71.5185
Hunter-Lab	53.5467, 47.0847, 3.7086

Details

The Android color `4293159314` is a light color, and the websafe version is hex `FF6699`. A complement of this color would be `4285129915`, and the grayscale version is `4287795858`.

A 20% lighter version of the original color is `4294942920`, and `4289278560` is the 20% darker color. If you saturate the color by 10%, you get `4293153411`, and if you desaturate by 10%, it is `4293165217`.

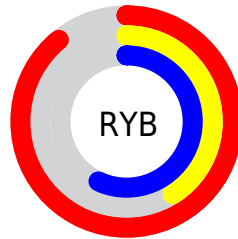
Distribution



Red (89%)

Green (41%)

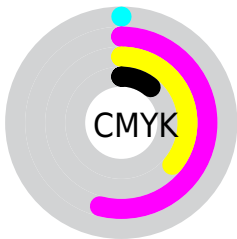
Blue (57%)



Red (89%)

Yellow (41%)

Blue (57%)

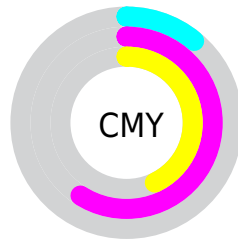


Cyan (0%)

Magenta (54%)

Yellow (36%)

Black (11%)



Cyan (11%)

Magenta (59%)

Yellow (43%)

Brightness & Saturation Gradients


These gradients show how the Android color 4293159314 changes by changing the brightness by 10 percent. The first figure shows a shift by +10% for each color and the second figure -10%.

Similar to the brightness gradients but the following saturation gradients show a change of the Android color 4293159314 by changing the saturation by 10% instead.

 4293159314

 4293159314

4294967295

 4291186296

 4294942920

 4289278560

 4294950116

 4287369288

 4294957567

 4285530162

 4294964991

 4283695133

 4282122242

 4279697408

 4278190080

 4293159314

 4293159314

 4293153411

 4293165217

 4293147508

 4293171120

 4293141860

 4293176768

 4293135957

 4293182671

 4293132364

 4293188574

 4293194477

 4293197820

 4293197823

Harmonies

Analogous

The Analogous color harmony consists of three colors that are next to each other on the color wheel.



4291523519



4293159314



4293095269

Triad

The Triadic color harmony groups three colors that are evenly spaced from another and form a triangle on the color wheel.



4293159314



4286291263



4278231777

Complementary

The Complementary color scheme is a pair of colors which are on the opposite of each other on the color wheel.



4293159314



4285129915

Split Complementary

Split-complementary colors differ from the complementary color scheme. The scheme consists of three colors, the original color and two neighbors of the complement color.



4278233280



4293159314



4282033508

Square

The Square scheme is like the rectangle color scheme, but the four colors are evenly spaced on the color wheel.



4293159314



4289368113



4278233234



4281374445

Rectangle

The Rectangle color scheme consists of four colors that form a rectangle on the color wheel.



4293159314



4292311372



4278233234



4278232280

Sweetspot

The Sweet Spot groups the original color and five complimentary colors.



4293159314



4294956772



4290472420



4286605167



4278190080



4286611584

Same Dimension

The Same Dimension uses a secret algorithm to generate beautiful new colors.



4293159314



4294924689



4293164649



4285753195



4289921084



4281532433

Inverse Universe

The Inverse Universe completely reimagines the original color for something new.



4293159314



4294924689



4285124580



4285753195



4289921084



4281532433

Previews

White Background



This preview shows how the Android color 4293159314 looks on a white background.

Color Contrast Check

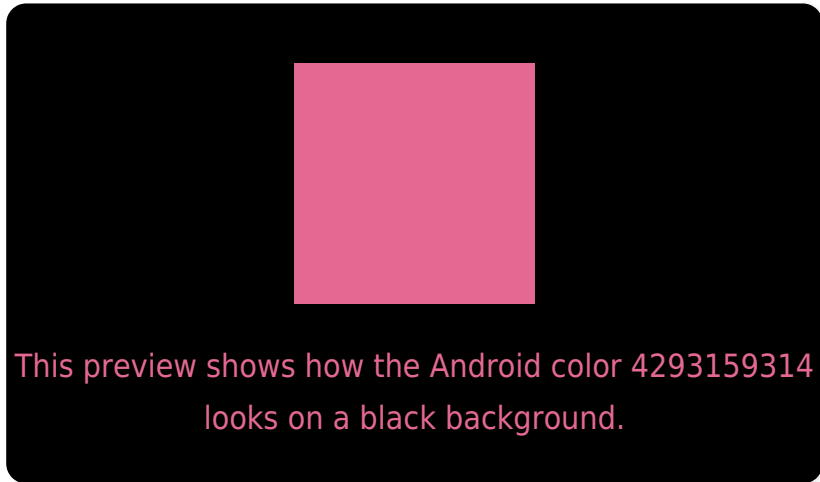
Large Text (above 18pt) WCAG AA ✓ Pass

Any Text WCAG AA ✗ Fail

Large Text (above 18pt) WCAG AAA ✗ Fail

Any Text WCAG AAA ✗ Fail

Black Background



Color Contrast Check

Large Text (above 18pt) WCAG AA ✓ Pass

Any Text WCAG AA ✓ Pass

Large Text (above 18pt) WCAG AAA ✓ Pass

Any Text WCAG AAA × Fail

If you want to check with other color combinations, try the [Color Contrast Checker](#).

Android 4293159314 Background



This preview shows how black text looks on a background with the Android color 4293159314.



This preview shows how white text looks on a background with the Android color 4293159314.

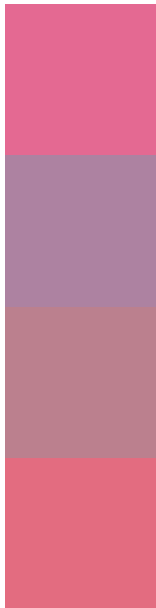
Color Blindness Simulation

Color vision deficiency is a very complex topic, and I could not describe the different causes any better than Wikipedia does, so if you want to learn more, you should check out their [article about color blindness](#).

Dichromacy



Trichromacy



Original Color
4293159314

Protanomaly
4289561249

Deuteranomaly
4290478222

Tritanomaly
4293094528

Monochromacy



Original Color
4293159314

Achromatopsia
4287795858

Achromatomaly
4289758098

CSS Examples

Text

The CSS property to change the color of the text to Android 4293159314 is called "color". The color property can be set on classes, ids or directly on the HTML element.

This example shows how text in the color `rgb(228, 105, 146)` looks like.

```
.text, #text, p{  
    color:rgb(228, 105, 146)  
}
```

If you want to add a text shadow in that color use the text-shadow property, you can generate a text shadow directly with our [CSS Text Shadow Generator](#).

Here you see how black text with a 4 pixel rgb(228, 105, 146) colored shadow looks like.

```
.shadow{ text-shadow: 4px 4px 2px rgb(228, 105, 146) }
```

Border

The CSS property to change the border of an element to Android 4293159314 is called "border". The border property can be set on classes, ids or directly on the HTML element.

This example shows the color as border, it can be applied via the CSS property "border" or "border-color".

```
.border, #border, table{ border:4px solid rgb(228, 105, 146) }
```

If only the border color should be changed use the property border-color.

```
.border{ border-color:rgb(228, 105, 146) }
```

If you want to add a box shadow in that color use:

Here you see how a box with a 4 pixel rgb(228, 105, 146) colored shadow looks like.

```
.boxshadow{ -moz-box-shadow:4px 4px 4px  
4px rgb(228, 105, 146); -webkit-box-  
shadow:4px 4px 4px 4px rgb(228, 105, 146);  
box-shadow:4px 4px 4px 4px rgb(228, 105,  
146) }
```

Background

The CSS property to change the background color of an element to Android 4293159314 is called "background". The background property can be set on classes, ids or directly on the HTML element.

```
.background, #background, body{  
background: rgb(228, 105, 146) }
```

If only the background color should be changed can be used:

```
.background{ background-color: rgb(228,  
105, 146) }
```

This example shows the color as background, it is applied via the CSS property "background".

To optimize and compress your CSS code, you can use our [online CSS compressor and optimizer](#) based on csstidy. If you want to create a linear or radial gradient as background or border, check our [CSS Gradient Generator](#).

Hey! You found this booklet interesting? Support Converting Colors with the new Membership Option!

The pro membership hides all ads, plus gives you double the colors in the color bucket, and more awesome pro features!

[Learn more, Memberships starting at \\$2.50/m!](#)

**Follow me
on Twitter!**

@ConvertingColor