

Converting Colors

Android(4293164196)

Have a look what the booklet for
Android(4293164196) contains.

Android(4293164196)	3
<i>Conversions</i>	4
<i>Details</i>	6
<i>Harmonies</i>	11
<i>Previews</i>	23
<i>Color Blindness Simulation</i>	26
<i>CSS Examples</i>	29

Color

Android(4293164196)

Conversions

Conversions Part 1

Format	Color
Hex	E47CA4
RGB	228, 124, 164
RGB Percent	89%, 49%, 64%
CMY	0.1059, 0.5137, 0.3569
CMYK	0.00, 0.46, 0.28, 0.11
HSL	337°, 66%, 69%
HSV	337°, 46%, 89%
XYZ	45.9034, 33.5896, 39.1860
YIQ	159.6560, 49.1440, 34.4880

Conversions

Conversions Part 2

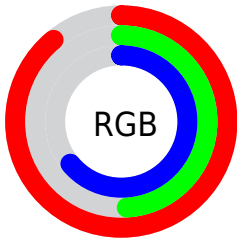
Format	Color
R _Y B	228, 124, 164
Decimal	14974116
CIE Lab	64.64, 44.72, -3.23
CIE LCh	65, 44.838, 355.863
Yxy	33.5896, 0.3868, 0.2830
Android (android.graphics.Color)	4293164196 (0xFFE47CA4)
YUV	159.6560, 2.1416, 59.9377
Hunter-Lab	57.9566, 39.9536, 0.4820

Details

The Android color `4293164196` is a light color, and the websafe version is hex `CC6699`. A complement of this color would be `4286375100`, and the grayscale version is `4288716960`.

A 20% lighter version of the original color is `4294947803`, and `4289349488` is the 20% darker color. If you saturate the color by 10%, you get `4293158294`, and if you desaturate by 10%, it is `4293170098`.

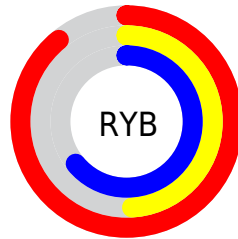
Distribution



Red (89%)

Green (49%)

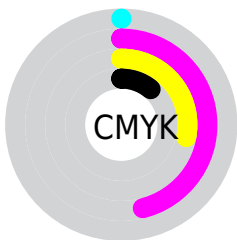
Blue (64%)



Red (89%)

Yellow (49%)

Blue (64%)

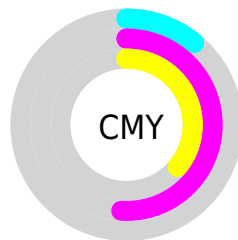


Cyan (0%)

Magenta (46%)

Yellow (28%)

Black (11%)



Cyan (11%)

Magenta (51%)

Yellow (36%)

Brightness & Saturation Gradients


These gradients show how the Android color 4293164196 changes by changing the brightness by 10 percent. The first figure shows a shift by +10% for each color and the second figure -10%.

Similar to the brightness gradients but the following saturation gradients show a change of the Android color 4293164196 by changing the saturation by 10% instead.

 4293164196

 4293164196

4294967295

 4291256970

 4294947803

 4289349488

 4294954999

 4287507800

 4294962431

 4285664833

 4283891755

 4282187798

 4280483841

 4278190080

 4293164196

 4293164196

 4293158294

 4293170098

 4293152392

 4293176000

 4293146746

 4293181646

 4293140844

 4293187548

 4293134942

 4293193450

 4293132376

 4293197816

 4293197823

Harmonies

Analogous

The Analogous color harmony consists of three colors that are next to each other on the color wheel.



4291397066



4293164196



4293426812

Triad

The Triadic color harmony groups three colors that are evenly spaced from another and form a triangle on the color wheel.



4293164196



4287800658



4278234334

Complementary

The Complementary color scheme is a pair of colors which are on the opposite of each other on the color wheel.



4293164196



4286375100

Split Complementary

Split-complementary colors differ from the complementary color scheme. The scheme consists of three colors, the original color and two neighbors of the complement color.



4278235582



4293164196



4284591470

Square

The Square scheme is like the rectangle color scheme, but the four colors are evenly spaced on the color wheel.



4293164196



4290419019



4278235542



4283081708

Rectangle

The Rectangle color scheme consists of four colors that form a rectangle on the color wheel.



4293164196



4292839013



4278235542



4278234837

Sweetspot

The Sweet Spot groups the original color and five complimentary colors.



4293164196



4294958057



4290411748



4286605938



4278190080



4286611584

Same Dimension

The Same Dimension uses a secret algorithm to generate beautiful new colors.



4293164196



4294931369



4293166716



4285753196



4289921093



4281532436

Inverse Universe

The Inverse Universe completely reimagines the original color for something new.



4293164196



4294931369



4286372580



4285753196



4289921093



4281532436

Previews

White Background



This preview shows how the Android color 4293164196 looks on a white background.

Color Contrast Check

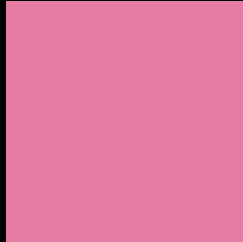
Large Text (above 18pt) WCAG AA × Fail

Any Text WCAG AA × Fail

Large Text (above 18pt) WCAG AAA × Fail

Any Text WCAG AAA × Fail

Black Background



This preview shows how the Android color 4293164196 looks on a black background.

Color Contrast Check

Large Text (above 18pt) WCAG AA ✓ Pass

Any Text WCAG AA ✓ Pass

Large Text (above 18pt) WCAG AAA ✓ Pass

Any Text WCAG AAA ✓ Pass

If you want to check with other color combinations, try the [Color Contrast Checker](#).

Android 4293164196 Background



This preview shows how black text looks on a background with the Android color 4293164196.



This preview shows how white text looks on a background with the Android color 4293164196.

Color Blindness Simulation

Color vision deficiency is a very complex topic, and I could not describe the different causes any better than Wikipedia does, so if you want to learn more, you should check out their [article about color blindness](#).

Dichromacy

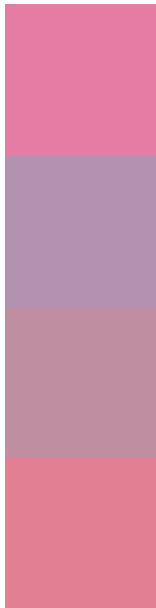


Original Color
4293164196

Protanopia
4288191672

Deuteranopia
4289435807

Trichromacy



Original Color
4293164196

Protanomaly
4290023601

Deuteranomaly
4290809505

Tritanomaly
4293099411

Monochromacy



Original Color
4293164196

Achromatopsia
4288716960

Achromatomaly
4290352033

CSS Examples

Text

The CSS property to change the color of the text to Android 4293164196 is called "color". The color property can be set on classes, ids or directly on the HTML element.

This example shows how text in the color `rgb(228, 124, 164)` looks like.

```
.text, #text, p{  
    color:rgb(228, 124, 164)  
}
```

If you want to add a text shadow in that color use the text-shadow property, you can generate a text shadow directly with our [CSS Text Shadow Generator](#).

Here you see how black text with a 4 pixel rgb(228, 124, 164) colored shadow looks like.

```
.shadow{ text-shadow: 4px 4px 2px rgb(228, 124, 164) }
```

Border

The CSS property to change the border of an element to Android 4293164196 is called "border". The border property can be set on classes, ids or directly on the HTML element.

This example shows the color as border, it can be applied via the CSS property "border" or "border-color".

```
.border, #border, table{ border:4px solid rgb(228, 124, 164) }
```

If only the border color should be changed use the property `border-color`.

```
.border{ border-color:rgb(228, 124, 164) }
```

If you want to add a box shadow in that color use:

Here you see how a box with a 4 pixel `rgb(228, 124, 164)` colored shadow looks like.

```
.boxshadow{ -moz-box-shadow:4px 4px 4px  
4px rgb(228, 124, 164); -webkit-box-  
shadow:4px 4px 4px 4px rgb(228, 124, 164);  
box-shadow:4px 4px 4px 4px rgb(228, 124,  
164) }
```

Background

The CSS property to change the background color of an element to Android 4293164196 is called "background". The background property can be set on classes, ids or directly on the HTML element.

```
.background, #background, body{  
background: rgb(228, 124, 164) }
```

If only the background color should be changed can be used:

```
.background{ background-color: rgb(228,  
124, 164) }
```

This example shows the color as background, it is applied via the CSS property "background".

To optimize and compress your CSS code, you can use our [online CSS compressor and optimizer](#) based on csstidy. If you want to create a linear or radial gradient as background or border, check our [CSS Gradient Generator](#).

Hey! You found this booklet interesting? Support Converting Colors with the new Membership Option!

The pro membership hides all ads, plus gives you double the colors in the color bucket, and more awesome pro features!

[Learn more, Memberships starting at \\$2.50/m!](#)

**Follow me
on Twitter!**

@ConvertingColor