

Converting Colors

Android(4293169567)

Have a look what the booklet for
Android(4293169567) contains.

Android(4293169567)	3
<i>Conversions</i>	4
<i>Details</i>	6
<i>Harmonies</i>	11
<i>Previews</i>	23
<i>Color Blindness Simulation</i>	26
<i>CSS Examples</i>	29

Color

Android(4293169567)

Conversions

Conversions Part 1

Format	Color
Hex	E4919F
RGB	228, 145, 159
RGB Percent	89%, 57%, 62%
CMY	0.1059, 0.4314, 0.3765
CMYK	0.00, 0.36, 0.30, 0.11
HSL	350°, 61%, 73%
HSV	350°, 36%, 89%
XYZ	48.3783, 39.2480, 37.8267
YIQ	171.4130, 44.9740, 21.9500

Conversions

Conversions Part 2

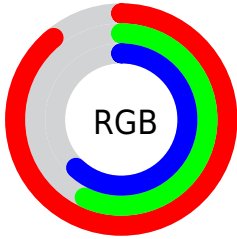
Format	Color
R_{YB}	228, 145, 159
Decimal	14979487
CIE _{Lab}	68.93, 33.14, 5.83
CIE _{LCh}	69, 33.646, 9.987
Yxy	39.2480, 0.3856, 0.3129
Android (android.graphics.Color)	4293169567 (0xFFE4919F)
YUV	171.4130, -6.1196, 49.6268
Hunter-Lab	62.6482, 28.2072, 8.0547

Details

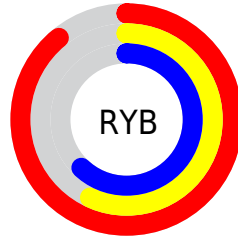
The Android color `4293169567` is a light color, and the websafe version is hex `FF9999`. A complement of this color would be `4287751382`, and the grayscale version is `4289440683`.

A 20% lighter version of the original color is `4294953174`, and `4289420652` is the 20% darker color. If you saturate the color by 10%, you get `4293163660`, and if you desaturate by 10%, it is `4293175474`.

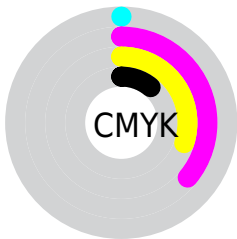
Distribution



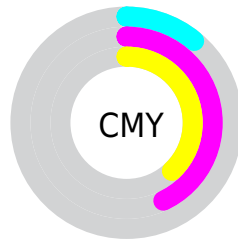
- Red (89%)
- Green (57%)
- Blue (62%)



- Red (89%)
- Yellow (57%)
- Blue (62%)



- Cyan (0%)
- Magenta (36%)
- Yellow (30%)
- Black (11%)



- Cyan (11%)
- Magenta (43%)
- Yellow (38%)

Brightness & Saturation Gradients

These gradients show how the Android color 4293169567 changes by changing the brightness by 10 percent. The first figure shows a shift by +10% for each color and the second figure -10%.

Similar to the brightness gradients but the following saturation gradients show a change of the Android color 4293169567 by changing the saturation by 10% instead.

 4293169567

 4293169567

4294967295

 4291262341

 4294953174

 4289420652

 4294960370

 4287579220

 4285803581

 4284027687

 4282318866

 4280877057

 4278190080

 4293169567

 4293169567

 4293163660

 4293175474

 4293157753

 4293181381

 4293152102

 4293187032

 4293146195

 4293192939

 4293140288

 4293197822

 4293134381

 4293197823

 4293132326

Harmonies

Analogous

The Analogous color harmony consists of three colors that are next to each other on the color wheel.



4292318398



4293169567



4292908675

Triad

The Triadic color harmony groups three colors that are evenly spaced from another and form a triangle on the color wheel.



4293169567



4287738489



4284396001

Complementary

The Complementary color scheme is a pair of colors which are on the opposite of each other on the color wheel.



4293169567



4287751382

Split Complementary

Split-complementary colors differ from the complementary color scheme. The scheme consists of three colors, the original color and two neighbors of the complement color.



4282169294



4293169567



4285380498

Square

The Square scheme is like the rectangle color scheme, but the four colors are evenly spaced on the color wheel.



4293169567



4289964652



4283021746



4287539428

Rectangle

The Rectangle color scheme consists of four colors that form a rectangle on the color wheel.



4293169567



4292254836



4283021746



4283413468

Sweetspot

The Sweet Spot groups the original color and five complimentary colors.



4293169567



4294960104



4292186596



4286607218



4278190080



4286611584

Same Dimension

The Same Dimension uses a secret algorithm to generate beautiful new colors.



4293169567



4294938530



4293176209



4285753193



4289921054



4281532425

Inverse Universe

The Inverse Universe completely reimagines the original color for something new.



4293169567



4294938530



4287744740



4285753193



4289921054



4281532425

Previews

White Background



This preview shows how the Android color 4293169567 looks on a white background.

Color Contrast Check

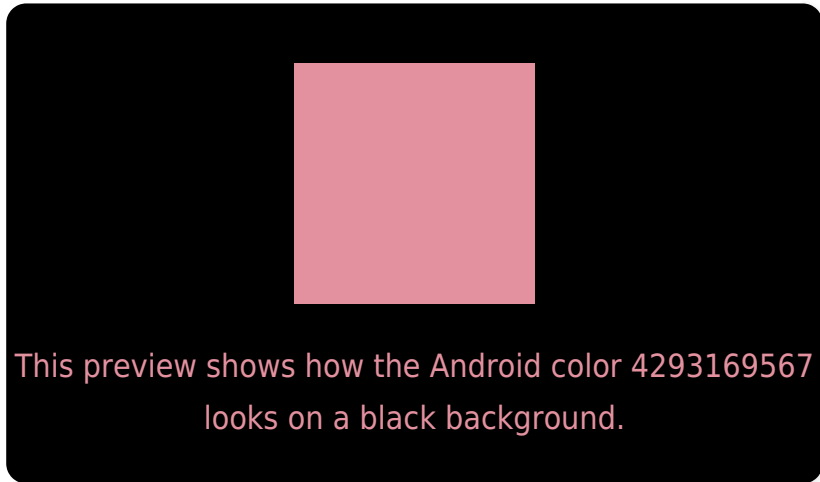
Large Text (above 18pt) WCAG AA × Fail

Any Text WCAG AA × Fail

Large Text (above 18pt) WCAG AAA × Fail

Any Text WCAG AAA × Fail

Black Background



Color Contrast Check

Large Text (above 18pt) WCAG AA ✓ Pass

Any Text WCAG AA ✓ Pass

Large Text (above 18pt) WCAG AAA ✓ Pass

Any Text WCAG AAA ✓ Pass

If you want to check with other color combinations, try the [Color Contrast Checker](#).

Android 4293169567 Background



This preview shows how black text looks on a background with the Android color 4293169567.




This preview shows how white text looks on a background with the Android color 4293169567.

Color Blindness Simulation

Color vision deficiency is a very complex topic, and I could not describe the different causes any better than Wikipedia does, so if you want to learn more, you should check out their [article about color blindness](#).

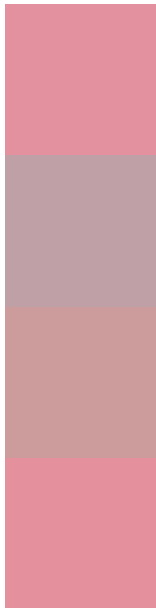
Dichromacy





Tritanopia
4293169564

Trichromacy



Original Color
4293169567

Protanomaly
4290814119

Deuteranomaly
4291599517

Tritanomaly
4293169565

Monochromacy



Original Color
4293169567

Achromatopsia
4289440683

Achromatomaly
4290814631

CSS Examples

Text

The CSS property to change the color of the text to Android 4293169567 is called "color". The color property can be set on classes, ids or directly on the HTML element.

This example shows how text in the color `rgb(228, 145, 159)` looks like.

```
.text, #text, p{  
    color:rgb(228, 145, 159)  
}
```

If you want to add a text shadow in that color use the text-shadow property, you can generate a text shadow directly with our [CSS Text Shadow Generator](#).

Here you see how black text with a 4 pixel rgb(228, 145, 159) colored shadow looks like.

```
.shadow{ text-shadow: 4px 4px 2px rgb(228, 145, 159) }
```

Border

The CSS property to change the border of an element to Android 4293169567 is called "border". The border property can be set on classes, ids or directly on the HTML element.

This example shows the color as border, it can be applied via the CSS property "border" or "border-color".

```
.border, #border, table{ border:4px solid rgb(228, 145, 159) }
```

If only the border color should be changed use the property `border-color`.

```
.border{ border-color:rgb(228, 145, 159) }
```

If you want to add a box shadow in that color use:

Here you see how a box with a 4 pixel `rgb(228, 145, 159)` colored shadow looks like.

```
.boxshadow{ -moz-box-shadow:4px 4px 4px 4px rgb(228, 145, 159); -webkit-box-shadow:4px 4px 4px 4px rgb(228, 145, 159); box-shadow:4px 4px 4px 4px rgb(228, 145, 159) }
```

Background

The CSS property to change the background color of an element to Android 4293169567 is called "background". The background property can be set on classes, ids or directly on the HTML element.

```
.background, #background, body{  
background: rgb(228, 145, 159) }
```

If only the background color should be changed can be used:

```
.background{ background-color: rgb(228,  
145, 159) }
```

This example shows the color as background, it is applied via the CSS property "background".

To optimize and compress your CSS code, you can use our [online CSS compressor and optimizer](#) based on csstidy. If you want to create a linear or radial gradient as background or border, check our [CSS Gradient Generator](#).

Hey! You found this booklet interesting? Support Converting Colors with the new Membership Option!

The pro membership hides all ads, plus gives you double the colors in the color bucket, and more awesome pro features!

[Learn more, Memberships starting at \\$2.50/m!](#)

**Follow me
on Twitter!**

@ConvertingColor