

# Converting Colors

Android(4293173165)

Have a look what the booklet for  
Android(4293173165) contains.

<b>Android(4293173165)</b> .....	3
<i><b>Conversions</b></i> .....	4
<i><b>Details</b></i> .....	6
<i><b>Harmonies</b></i> .....	11
<i><b>Previews</b></i> .....	23
<i><b>Color Blindness Simulation</b></i> .....	26
<i><b>CSS Examples</b></i> .....	29

# **Color**

**Android(4293173165)**

# Conversions

## Conversions Part 1

Format	Color
Hex	E49FAD
RGB	228, 159, 173
RGB Percent	89%, 62%, 68%
CMY	0.1059, 0.3765, 0.3216
CMYK	0.00, 0.30, 0.24, 0.11
HSL	348°, 56%, 76%
HSV	348°, 30%, 89%
XYZ	51.9359, 44.3074, 45.3500
YIQ	181.2270, 36.6300, 18.9820

# Conversions

## Conversions Part 2

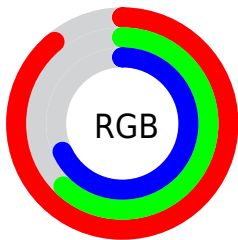
Format	Color
R <sub>Y</sub> B	228, 159, 173
Decimal	14983085
CIE Lab	72.43, 27.59, 3.11
CIE LCh	72, 27.767, 6.433
Yxy	44.3074, 0.3668, 0.3129
Android (android.graphics.Color)	4293173165 (0xFFE49FAD)
YUV	181.2270, -4.0559, 41.0199
Hunter-Lab	66.5638, 22.7866, 6.2003

# Details

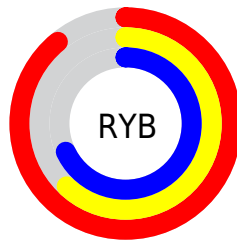
The Android color `4293173165` is a light color, and the websafe version is hex `CC9999`. A complement of this color would be `4288668886`, and the grayscale version is `4290098613`.

A 20% lighter version of the original color is `4294956772`, and `4289424249` is the 20% darker color. If you saturate the color by 10%, you get `4293167259`, and if you desaturate by 10%, it is `4293179071`.

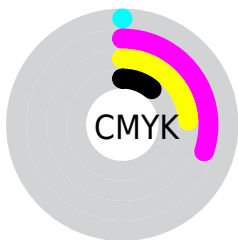
# Distribution



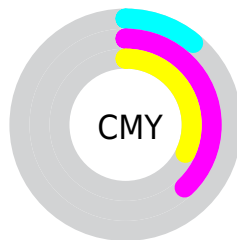
- Red (89%)
- Green (62%)
- Blue (68%)



- Red (89%)
- Yellow (62%)
- Blue (68%)



- Cyan (0%)
- Magenta (30%)
- Yellow (24%)
- Black (11%)



- Cyan (11%)
- Magenta (38%)
- Yellow (32%)

# Brightness & Saturation Gradients

These gradients show how the Android color 4293173165 changes by changing the brightness by 10 percent. The first figure shows a shift by +10% for each color and the second figure -10%.

Similar to the brightness gradients but the following saturation gradients show a change of the Android color 4293173165 by changing the saturation by 10% instead.



 4293173165

 4293173165

4294967295

 4291265938

 4294956772

 4289424249


 4294964223

 4287648352

 4285872712

 4284162866

 4282518301

 4281073667

 4278190080

 4293173165

 4293173165

 4293167259

 4293179071

 4293161353

 4293184977

 4293155702

 4293190628

 4293149796

 4293196534

 4293143890

 4293197823

 4293137984

 4293132334

# Harmonies

## Analogous

The Analogous color harmony consists of three colors that are next to each other on the color wheel.



4292321990



4293173165



4293108373

# Triad

The Triadic color harmony groups three colors that are evenly spaced from another and form a triangle on the color wheel.



4293173165



4288919944



4286036703

# Complementary

The Complementary color scheme is a pair of colors which are on the opposite of each other on the color wheel.



4293173165



4288668886

# Split Complementary

Split-complementary colors differ from the complementary color scheme. The scheme consists of three colors, the original color and two neighbors of the complement color.



4284858063



4293173165



4286955165

# Square

The Square scheme is like the rectangle color scheme, but the four colors are evenly spaced on the color wheel.



4293173165



4290753151



4285382838



4288328420

# Rectangle

The Rectangle color scheme consists of four colors that form a rectangle on the color wheel.



4293173165



4292585352



4285382838



4285512923



# Sweetspot

The Sweet Spot groups the original color and five complimentary colors.



4293173165



4294961389



4292190180



4286607732



4278190080



4286611584



# Same Dimension

The Same Dimension uses a secret algorithm to generate beautiful new colors.



4293173165



4294943670



4293178271



4285753194



4289921060



4281532426



# Inverse Universe

The Inverse Universe completely reimagines the original color for something new.



4293173165



4294943670



4288663780



4285753194



4289921060



4281532426



# Previews

## White Background



This preview shows how the Android color 4293173165 looks on a white background.

## Color Contrast Check

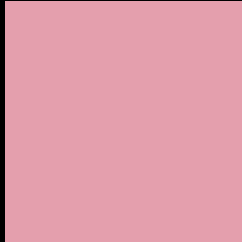
Large Text (above 18pt) WCAG AA × Fail

Any Text WCAG AA × Fail

Large Text (above 18pt) WCAG AAA × Fail

Any Text WCAG AAA × Fail

# Black Background



This preview shows how the Android color 4293173165 looks on a black background.

## Color Contrast Check

Large Text (above 18pt) WCAG AA ✓ Pass

Any Text WCAG AA ✓ Pass

Large Text (above 18pt) WCAG AAA ✓ Pass

Any Text WCAG AAA ✓ Pass

If you want to check with other color combinations, try the [Color Contrast Checker](#).



# Android 4293173165 Background



This preview shows how black text looks on a background with the Android color 4293173165.




This preview shows how white text looks on a background with the Android color 4293173165.

# Color Blindness Simulation

Color vision deficiency is a very complex topic, and I could not describe the different causes any better than Wikipedia does, so if you want to learn more, you should check out their [article about color blindness](#).

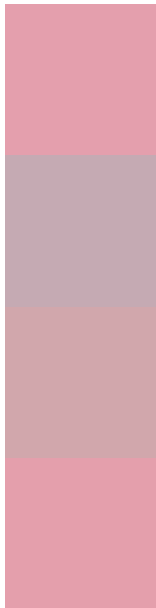
## Dichromacy





**Tritanopia**  
4293173163

# Trichromacy



**Original Color**  
4293173165

**Protanomaly**  
4291144371

**Deuteranomaly**  
4291930028

**Tritanomaly**  
4293173164

# Monochromacy



**Original Color**  
4293173165

**Achromatopsia**  
4290098613

**Achromatomaly**  
4291210674

# CSS Examples

## Text

The CSS property to change the color of the text to Android 4293173165 is called "color". The color property can be set on classes, ids or directly on the HTML element.

This example shows how text in the color `rgb(228, 159, 173)` looks like.

```
.text, #text, p{  
    color:rgb(228, 159, 173)  
}
```

If you want to add a text shadow in that color use the text-shadow property, you can generate a text shadow directly with our [CSS Text Shadow Generator](#).

Here you see how black text with a 4 pixel rgb(228, 159, 173) colored shadow looks like.

```
.shadow{ text-shadow: 4px 4px 2px rgb(228, 159, 173) }
```

## Border

The CSS property to change the border of an element to Android 4293173165 is called "border". The border property can be set on classes, ids or directly on the HTML element.

This example shows the color as border, it can be applied via the CSS property "border" or "border-color".

```
.border, #border, table{ border:4px solid rgb(228, 159, 173) }
```

If only the border color should be changed use the property `border-color`.

```
.border{ border-color:rgb(228, 159, 173) }
```

If you want to add a box shadow in that color use:

Here you see how a box with a 4 pixel `rgb(228, 159, 173)` colored shadow looks like.

```
.boxshadow{ -moz-box-shadow:4px 4px 4px 4px rgb(228, 159, 173); -webkit-box-shadow:4px 4px 4px 4px rgb(228, 159, 173); box-shadow:4px 4px 4px 4px rgb(228, 159, 173) }
```

# Background

The CSS property to change the background color of an element to Android 4293173165 is called "background". The background property can be set on classes, ids or directly on the HTML element.

```
.background, #background, body{  
background: rgb(228, 159, 173) }
```

If only the background color should be changed can be used:

```
.background{ background-color: rgb(228,  
159, 173) }
```

This example shows the color as background, it is applied via the CSS property "background".

To optimize and compress your CSS code, you can use our [online CSS compressor and optimizer](#) based on csstidy. If you want to create a linear or radial gradient as background or border, check our [CSS Gradient Generator](#).



Hey! You found this booklet interesting? Support Converting Colors with the new Membership Option!

The pro membership hides all ads, plus gives you double the colors in the color bucket, and more awesome pro features!

**[Learn more, Memberships starting at \\$2.50/m!](#)**

**Follow me  
on Twitter!**

@ConvertingColor