

Converting Colors

Android(4293176000)

Have a look what the booklet for
Android(4293176000) contains.

Android(4293176000)	3
<i>Conversions</i>	4
<i>Details</i>	6
<i>Harmonies</i>	11
<i>Previews</i>	23
<i>Color Blindness Simulation</i>	26
<i>CSS Examples</i>	29

Color

Android(4293176000)

Conversions

Conversions Part 1

Format	Color
Hex	E4AAC0
RGB	228, 170, 192
RGB Percent	89%, 67%, 75%
CMY	0.1059, 0.3333, 0.2471
CMYK	0.00, 0.25, 0.16, 0.11
HSL	337°, 52%, 78%
HSV	337°, 25%, 89%
XYZ	55.8841, 49.0492, 56.3912
YIQ	189.8500, 27.5060, 19.1380

Conversions

Conversions Part 2

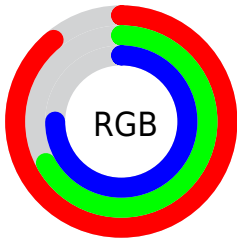
Format	Color
R _Y B	228, 170, 192
Decimal	14985920
CIE Lab	75.48, 24.56, -2.89
CIE LCh	75, 24.727, 353.299
Yxy	49.0492, 0.3464, 0.3040
Android (android.graphics.Color)	4293176000 (0xFFE4AAC0)
YUV	189.8500, 1.0600, 33.4576
Hunter-Lab	70.0351, 19.8714, 1.2852

Details

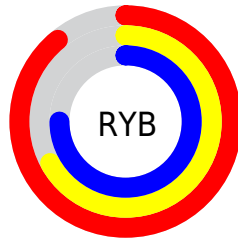
The Android color `4293176000` is a light color, and the websafe version is hex `CC9999`. A complement of this color would be `4289389774`, and the grayscale version is `4290690750`.

A 20% lighter version of the original color is `4294959864`, and `4289492363` is the 20% darker color. If you saturate the color by 10%, you get `4293170098`, and if you desaturate by 10%, it is `4293181902`.

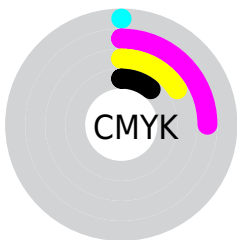
Distribution



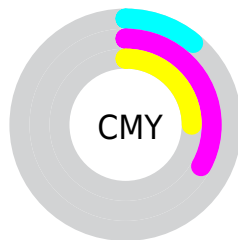
- Red (89%)
- Green (67%)
- Blue (75%)



- Red (89%)
- Yellow (67%)
- Blue (75%)



- Cyan (0%)
- Magenta (25%)
- Yellow (16%)
- Black (11%)



- Cyan (11%)
- Magenta (33%)
- Yellow (25%)

Brightness & Saturation Gradients

These gradients show how the Android color 4293176000 changes by changing the brightness by 10 percent. The first figure shows a shift by +10% for each color and the second figure -10%.

Similar to the brightness gradients but the following saturation gradients show a change of the Android color 4293176000 by changing the saturation by 10% instead.

 4293176000

 4293176000

4294967295

 4291334053

 4294959864

 4289492363


4294967039

 4287716465

 4285940825

 4284296513

 4282652203

 4281139223

 4279042048

 4278190080

 4293176000

 4293176000

 4293170098

 4293181902

 4293164196

 4293187804

 4293158550

 4293193450

 4293152647

 4293197817

 4293146745

 4293197823

 4293140843

 4293134941

 4293132374

Harmonies

Analogous

The Analogous color harmony consists of three colors that are next to each other on the color wheel.



4291997397



4293176000



4293503657

Triad

The Triadic color harmony groups three colors that are evenly spaced from another and form a triangle on the color wheel.



4293176000



4290297488



4286563550

Complementary

The Complementary color scheme is a pair of colors which are on the opposite of each other on the color wheel.



4293176000



4289389774

Split Complementary

Split-complementary colors differ from the complementary color scheme. The scheme consists of three colors, the original color and two neighbors of the complement color.



4286171083



4293176000



4288595102

Square

The Square scheme is like the rectangle color scheme, but the four colors are evenly spaced on the color wheel.



4293176000



4291868557



4287023028



4288200423

Rectangle

The Rectangle color scheme consists of four colors that form a rectangle on the color wheel.



4293176000



4293242268



4287023028



4286301656

Sweetspot

The Sweet Spot groups the original color and five complimentary colors.



4293176000



4294962162



4291734244



4286608248



4278190080



4286611584

Same Dimension

The Same Dimension uses a secret algorithm to generate beautiful new colors.



4293176000



4294947022



4293177770



4285753196



4289921092



4281532435

Inverse Universe

The Inverse Universe completely reimagines the original color for something new.



4293176000



4294947022



4289388004



4285753196



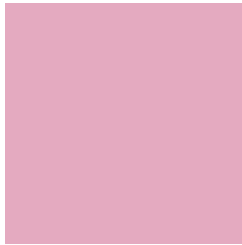
4289921092



4281532435

Previews

White Background



This preview shows how the Android color 4293176000 looks on a white background.

Color Contrast Check

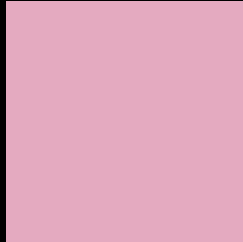
Large Text (above 18pt) WCAG AA × Fail

Any Text WCAG AA × Fail

Large Text (above 18pt) WCAG AAA × Fail

Any Text WCAG AAA × Fail

Black Background



This preview shows how the Android color 4293176000 looks on a black background.

Color Contrast Check

Large Text (above 18pt) WCAG AA ✓ Pass

Any Text WCAG AA ✓ Pass

Large Text (above 18pt) WCAG AAA ✓ Pass

Any Text WCAG AAA ✓ Pass

If you want to check with other color combinations, try the [Color Contrast Checker](#).

Android 4293176000 Background



This preview shows how black text looks on a background with the Android color 4293176000.



This preview shows how white text looks on a background with the Android color 4293176000.

Color Blindness Simulation

Color vision deficiency is a very complex topic, and I could not describe the different causes any better than Wikipedia does, so if you want to learn more, you should check out their [article about color blindness](#).

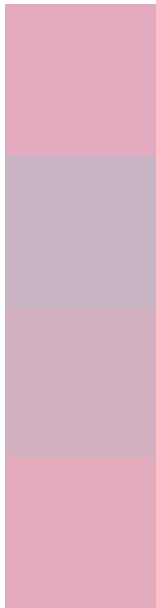
Dichromacy





Tritanopia
4293110712

Trichromacy



Original Color
4293176000

Protanomaly
4291409094

Deuteranomaly
4292063423

Tritanomaly
4293110715

Monochromacy



Original Color
4293176000

Achromatopsia
4290690750

Achromatomaly
4291606463

CSS Examples

Text

The CSS property to change the color of the text to Android 4293176000 is called "color". The color property can be set on classes, ids or directly on the HTML element.

This example shows how text in the color `rgb(228, 170, 192)` looks like.

```
.text, #text, p{  
    color:rgb(228, 170, 192)  
}
```

If you want to add a text shadow in that color use the text-shadow property, you can generate a text shadow directly with our [CSS Text Shadow Generator](#).

Here you see how black text with a 4 pixel rgb(228, 170, 192) colored shadow looks like.

```
.shadow{ text-shadow: 4px 4px 2px rgb(228, 170, 192) }
```

Border

The CSS property to change the border of an element to Android 4293176000 is called "border". The border property can be set on classes, ids or directly on the HTML element.

This example shows the color as border, it can be applied via the CSS property "border" or "border-color".

```
.border, #border, table{ border:4px solid rgb(228, 170, 192) }
```

If only the border color should be changed use the property `border-color`.

```
.border{ border-color:rgb(228, 170, 192) }
```

If you want to add a box shadow in that color use:

Here you see how a box with a 4 pixel `rgb(228, 170, 192)` colored shadow looks like.

```
.boxshadow{ -moz-box-shadow:4px 4px 4px  
4px rgb(228, 170, 192); -webkit-box-  
shadow:4px 4px 4px 4px rgb(228, 170, 192);  
box-shadow:4px 4px 4px 4px rgb(228, 170,  
192) }
```

Background

The CSS property to change the background color of an element to Android 4293176000 is called "background". The background property can be set on classes, ids or directly on the HTML element.

```
.background, #background, body{  
background: rgb(228, 170, 192) }
```

If only the background color should be changed can be used:

```
.background{ background-color: rgb(228,  
170, 192) }
```

This example shows the color as background, it is applied via the CSS property "background".

To optimize and compress your CSS code, you can use our [online CSS compressor and optimizer](#) based on csstidy. If you want to create a linear or radial gradient as background or border, check our [CSS Gradient Generator](#).

Hey! You found this booklet interesting? Support Converting Colors with the new Membership Option!

The pro membership hides all ads, plus gives you double the colors in the color bucket, and more awesome pro features!

[Learn more, Memberships starting at \\$2.50/m!](#)

**Follow me
on Twitter!**

@ConvertingColor