

Converting Colors

Android(4293177278)

Have a look what the booklet for
Android(4293177278) contains.

Android(4293177278)	3
<i>Conversions</i>	4
<i>Details</i>	6
<i>Harmonies</i>	11
<i>Previews</i>	23
<i>Color Blindness Simulation</i>	26
<i>CSS Examples</i>	29

Color

Android(4293177278)

Conversions

Conversions Part 1

Format	Color
Hex	E4AFBE
RGB	228, 175, 190
RGB Percent	89%, 69%, 75%
CMY	0.1059, 0.3137, 0.2549
CMYK	0.00, 0.23, 0.17, 0.11
HSL	343°, 50%, 79%
HSV	343°, 23%, 89%
XYZ	56.6191, 50.8716, 55.5503
YIQ	192.5570, 26.7730, 15.9010

Conversions

Conversions Part 2

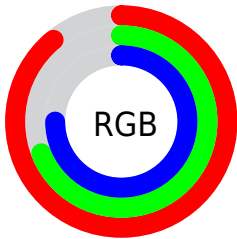
Format	Color
R_{YB}	228, 175, 190
Decimal	14987198
CIE _{Lab}	76.60, 21.56, -0.15
CIE _{LCh}	77, 21.563, 359.593
Yxy	50.8716, 0.3473, 0.3120
Android (android.graphics.Color)	4293177278 (0xFFE4AFBE)
YUV	192.5570, -1.2606, 31.0835
Hunter-Lab	71.3244, 16.8804, 3.7496

Details

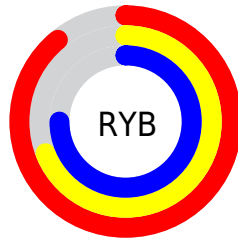
The Android color `4293177278` is a light color, and the websafe version is hex `CC9999`. A complement of this color would be `4289717461`, and the grayscale version is `4290888129`.

A 20% lighter version of the original color is `4294961142`, and `4289493641` is the 20% darker color. If you saturate the color by 10%, you get `4293171374`, and if you desaturate by 10%, it is `4293183182`.

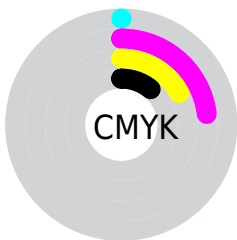
Distribution



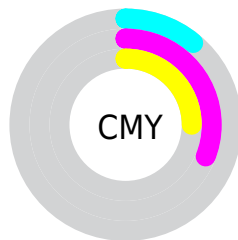
- Red (89%)
- Green (69%)
- Blue (75%)



- Red (89%)
- Yellow (69%)
- Blue (75%)



- Cyan (0%)
- Magenta (23%)
- Yellow (17%)
- Black (11%)



- Cyan (11%)
- Magenta (31%)
- Yellow (25%)

Brightness & Saturation Gradients

These gradients show how the Android color 4293177278 changes by changing the brightness by 10 percent. The first figure shows a shift by +10% for each color and the second figure -10%.

Similar to the brightness gradients but the following saturation gradients show a change of the Android color 4293177278 by changing the saturation by 10% instead.

 4293177278

 4293177278

4294967295

 4291335331

 4294961142


 4289493641

 4287717743

 4286007639

 4284297792

 4282653482

 4281140501

 4279304192

 4278190080

 4293177278

 4293177278

 4293171374

 4293183182

 4293165469

 4293189087

 4293159821

 4293194735

 4293153917

 4293197823

 4293148012

 4293142108

 4293136204

 4293132353

Harmonies

Analogous

The Analogous color harmony consists of three colors that are next to each other on the color wheel.



4292326098



4293177278



4293308586

Triad

The Triadic color harmony groups three colors that are evenly spaced from another and form a triangle on the color wheel.



4293177278



4290232986



4287612127

Complementary

The Complementary color scheme is a pair of colors which are on the opposite of each other on the color wheel.



4293177278



4289717461

Split Complementary

Split-complementary colors differ from the complementary color scheme. The scheme consists of three colors, the original color and two neighbors of the complement color.



4287023312



4293177278



4288726696

Square

The Square scheme is like the rectangle color scheme, but the four colors are evenly spaced on the color wheel.



4293177278



4291673237



4287547580



4289118180

Rectangle

The Rectangle color scheme consists of four colors that form a rectangle on the color wheel.



4293177278



4292981663



4287547580



4287284955

Sweetspot

The Sweet Spot groups the original color and five complimentary colors.



4293177278



4294962674



4292194276



4286608760



4278190080



4286611584

Same Dimension

The Same Dimension uses a secret algorithm to generate beautiful new colors.



4293177278



4294949068



4293180079



4285753195



4289921075



4281532430

Inverse Universe

The Inverse Universe completely reimagines the original color for something new.



4293177278



4294949068



4289714660



4285753195



4289921075



4281532430

Previews

White Background



This preview shows how the Android color 4293177278 looks on a white background.

Color Contrast Check

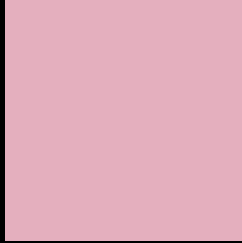
Large Text (above 18pt) WCAG AA × Fail

Any Text WCAG AA × Fail

Large Text (above 18pt) WCAG AAA × Fail

Any Text WCAG AAA × Fail

Black Background



This preview shows how the Android color 4293177278 looks on a black background.

Color Contrast Check

Large Text (above 18pt) WCAG AA ✓ Pass

Any Text WCAG AA ✓ Pass

Large Text (above 18pt) WCAG AAA ✓ Pass

Any Text WCAG AAA ✓ Pass

If you want to check with other color combinations, try the [Color Contrast Checker](#).

Android 4293177278 Background



This preview shows how black text looks on a background with the Android color 4293177278.




This preview shows how white text looks on a background with the Android color 4293177278.

Color Blindness Simulation

Color vision deficiency is a very complex topic, and I could not describe the different causes any better than Wikipedia does, so if you want to learn more, you should check out their [article about color blindness](#).

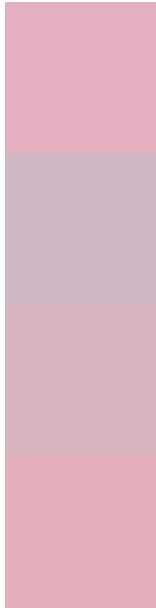
Dichromacy





Tritanopia
4293177277

Trichromacy



Original Color
4293177278

Protanomaly
4291606467

Deuteranomaly
4292326589

Tritanomaly
4293177277

Monochromacy



Original Color
4293177278

Achromatopsia
4290888129

Achromatomaly
4291738304

CSS Examples

Text

The CSS property to change the color of the text to Android 4293177278 is called "color". The color property can be set on classes, ids or directly on the HTML element.

This example shows how text in the color `rgb(228, 175, 190)` looks like.

```
.text, #text, p{  
    color:rgb(228, 175, 190)  
}
```

If you want to add a text shadow in that color use the text-shadow property, you can generate a text shadow directly with our [CSS Text Shadow Generator](#).

Here you see how black text with a 4 pixel rgb(228, 175, 190) colored shadow looks like.

```
.shadow{ text-shadow: 4px 4px 2px rgb(228, 175, 190) }
```

Border

The CSS property to change the border of an element to Android 4293177278 is called "border". The border property can be set on classes, ids or directly on the HTML element.

This example shows the color as border, it can be applied via the CSS property "border" or "border-color".

```
.border, #border, table{ border:4px solid rgb(228, 175, 190) }
```

If only the border color should be changed use the property `border-color`.

```
.border{ border-color:rgb(228, 175, 190) }
```

If you want to add a box shadow in that color use:

Here you see how a box with a 4 pixel `rgb(228, 175, 190)` colored shadow looks like.

```
.boxshadow{ -moz-box-shadow:4px 4px 4px  
4px rgb(228, 175, 190); -webkit-box-  
shadow:4px 4px 4px 4px rgb(228, 175, 190);  
box-shadow:4px 4px 4px 4px rgb(228, 175,  
190) }
```

Background

The CSS property to change the background color of an element to Android 4293177278 is called "background". The background property can be set on classes, ids or directly on the HTML element.

```
.background, #background, body{  
background: rgb(228, 175, 190) }
```

If only the background color should be changed can be used:

```
.background{ background-color: rgb(228,  
175, 190) }
```

This example shows the color as background, it is applied via the CSS property "background".

To optimize and compress your CSS code, you can use our [online CSS compressor and optimizer](#) based on csstidy. If you want to create a linear or radial gradient as background or border, check our [CSS Gradient Generator](#).

Hey! You found this booklet interesting? Support Converting Colors with the new Membership Option!

The pro membership hides all ads, plus gives you double the colors in the color bucket, and more awesome pro features!

[Learn more, Memberships starting at \\$2.50/m!](#)

**Follow me
on Twitter!**

@ConvertingColor