

# Converting Colors

Android(4293178594)

Have a look what the booklet for  
Android(4293178594) contains.

<b>Android(4293178594)</b> .....	3
<i><b>Conversions</b></i> .....	4
<i><b>Details</b></i> .....	6
<i><b>Harmonies</b></i> .....	11
<i><b>Previews</b></i> .....	23
<i><b>Color Blindness Simulation</b></i> .....	26
<i><b>CSS Examples</b></i> .....	29

# **Color**

**Android(4293178594)**

# Conversions

## Conversions Part 1

Format	Color
Hex	E4B4E2
RGB	228, 180, 226
RGB Percent	89%, 71%, 89%
CMY	0.1059, 0.2941, 0.1137
CMYK	0.00, 0.21, 0.01, 0.11
HSL	302°, 47%, 80%
HSV	302°, 21%, 89%
XYZ	62.0436, 54.6275, 79.2256
YIQ	199.5960, 13.8420, 24.4820

# Conversions

## Conversions Part 2

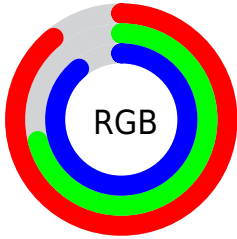
Format	Color
R <sub>Y</sub> B	228, 180, 226
Decimal	14988514
CIE Lab	78.83, 25.00, -16.39
CIE LCh	79, 29.895, 326.746
Yxy	54.6275, 0.3167, 0.2789
Android (android.graphics.Color)	4293178594 (0xFFE4B4E2)
YUV	199.5960, 13.0172, 24.9103
Hunter-Lab	73.9104, 20.4975, -11.8165

# Details

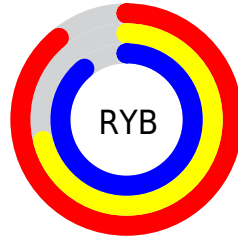
The Android color `4293178594` is a light color, and the websafe version is hex `FFCCFF`. A complement of this color would be `4290045110`, and the grayscale version is `4291282887`.

A 20% lighter version of the original color is `4294962431`, and `4289494955` is the 20% darker color. If you saturate the color by 10%, you get `4293172705`, and if you desaturate by 10%, it is `4293184483`.

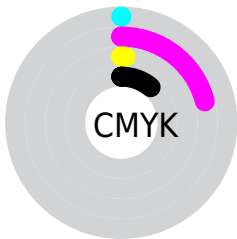
# Distribution



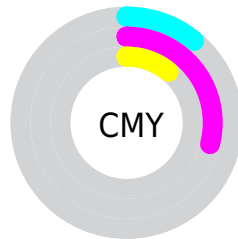
- Red (89%)
- Green (71%)
- Blue (89%)



- Red (89%)
- Yellow (71%)
- Blue (89%)



- Cyan (0%)
- Magenta (21%)
- Yellow (1%)
- Black (11%)



- Cyan (11%)
- Magenta (29%)
- Yellow (11%)

# Brightness & Saturation Gradients

These gradients show how the Android color 4293178594 changes by changing the brightness by 10 percent. The first figure shows a shift by +10% for each color and the second figure -10%.

Similar to the brightness gradients but the following saturation gradients show a change of the Android color 4293178594 by changing the saturation by 10% instead.



 4293178594

 4293178594

4294967295

 4291336646

 4294962431

 4289494955

 4287718800

 4286008694

 4284364382

 4282785606

 4281207087

 4279959579

 4278190080

 4293178594

 4293178594

 4293172705

 4293184483

 4293166816

 4293190372

 4293161183

 4293196005

 4293155294

 4293197798

 4293149405

 4293197799

 4293143516

 4293197800

 4293137627

 4293197801

 4293132506

 4293197802

 4293197803

# Harmonies

## Analogous

The Analogous color harmony consists of three colors that are next to each other on the color wheel.



4291018229



4293178594



4294422471

# Triad

The Triadic color harmony groups three colors that are evenly spaced from another and form a triangle on the color wheel.



4293178594



4292526220



4285518555

# Complementary

The Complementary color scheme is a pair of colors which are on the opposite of each other on the color wheel.



4293178594



4290045110

# Split Complementary

Split-complementary colors differ from the complementary color scheme. The scheme consists of three colors, the original color and two neighbors of the complement color.



4286567103



4293178594



4290627985

# Square

The Square scheme is like the rectangle color scheme, but the four colors are evenly spaced on the color wheel.



4293178594



4293965718



4288532388



4286238449

# Rectangle

The Rectangle color scheme consists of four colors that form a rectangle on the color wheel.



4293178594



4294750132



4288532388



4285715410



# Sweetspot

The Sweet Spot groups the original color and five complimentary colors.



4293178594



4294963454



4290163940



4286609279



4278190080



4286611584



# Same Dimension

The Same Dimension uses a secret algorithm to generate beautiful new colors.



4293178594



4294950908



4293178570



4285753202



4289921195



4281532465



# Inverse Universe

The Inverse Universe completely reimagines the original color for something new.



4293178594



4294950908



4290045134



4285753202



4289921195



4281532465



# Previews

## White Background



This preview shows how the Android color 4293178594 looks on a white background.

## Color Contrast Check

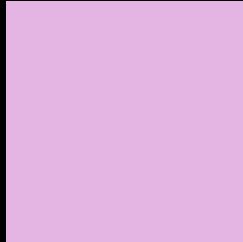
Large Text (above 18pt) WCAG AA × Fail

Any Text WCAG AA × Fail

Large Text (above 18pt) WCAG AAA × Fail

Any Text WCAG AAA × Fail

# Black Background



This preview shows how the Android color 4293178594 looks on a black background.

## Color Contrast Check

Large Text (above 18pt) WCAG AA ✓ Pass

Any Text WCAG AA ✓ Pass

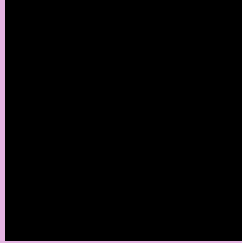
Large Text (above 18pt) WCAG AAA ✓ Pass

Any Text WCAG AAA ✓ Pass

If you want to check with other color combinations, try the [Color Contrast Checker](#).



# Android 4293178594 Background



This preview shows how black text looks on a background with the Android color 4293178594.



This preview shows how white text looks on a background with the Android color 4293178594.

# Color Blindness Simulation

Color vision deficiency is a very complex topic, and I could not describe the different causes any better than Wikipedia does, so if you want to learn more, you should check out their [article about color blindness](#).

## Dichromacy





**Tritanopia**  
4292917703

# Trichromacy



**Original Color**  
4293178594



**Protanomaly**  
4291411432



**Deuteranomaly**  
4292066017

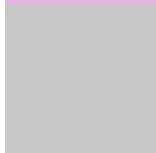


**Tritanomaly**  
4292982737

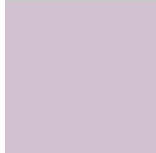
# Monochromacy



**Original Color**  
4293178594



**Achromatopsia**  
4291348680



**Achromatomaly**  
4292002257

# CSS Examples

## Text

The CSS property to change the color of the text to Android 4293178594 is called "color". The color property can be set on classes, ids or directly on the HTML element.

This example shows how text in the color `rgb(228, 180, 226)` looks like.

```
.text, #text, p{  
    color:rgb(228, 180, 226)  
}
```

If you want to add a text shadow in that color use the text-shadow property, you can generate a text shadow directly with our [CSS Text Shadow Generator](#).

Here you see how black text with a 4 pixel rgb(228, 180, 226) colored shadow looks like.

```
.shadow{ text-shadow: 4px 4px 2px rgb(228, 180, 226) }
```

## Border

The CSS property to change the border of an element to Android 4293178594 is called "border". The border property can be set on classes, ids or directly on the HTML element.

This example shows the color as border, it can be applied via the CSS property "border" or "border-color".

```
.border, #border, table{ border:4px solid rgb(228, 180, 226) }
```

If only the border color should be changed use the property `border-color`.

```
.border{ border-color:rgb(228, 180, 226) }
```

If you want to add a box shadow in that color use:

Here you see how a box with a 4 pixel `rgb(228, 180, 226)` colored shadow looks like.

```
.boxshadow{ -moz-box-shadow:4px 4px 4px  
4px rgb(228, 180, 226); -webkit-box-  
shadow:4px 4px 4px 4px rgb(228, 180, 226);  
box-shadow:4px 4px 4px 4px rgb(228, 180,  
226) }
```

# Background

The CSS property to change the background color of an element to Android 4293178594 is called "background". The background property can be set on classes, ids or directly on the HTML element.

```
.background, #background, body{  
background: rgb(228, 180, 226) }
```

If only the background color should be changed can be used:

```
.background{ background-color: rgb(228,  
180, 226) }
```

This example shows the color as background, it is applied via the CSS property "background".

To optimize and compress your CSS code, you can use our [online CSS compressor and optimizer](#) based on csstidy. If you want to create a linear or radial gradient as background or border, check our [CSS Gradient Generator](#).



Hey! You found this booklet interesting? Support Converting Colors with the new Membership Option!

The pro membership hides all ads, plus gives you double the colors in the color bucket, and more awesome pro features!

**[Learn more, Memberships starting at \\$2.50/m!](#)**

**Follow me  
on Twitter!**

@ConvertingColor