

Converting Colors

Android(4293182911)

Have a look what the booklet for
Android(4293182911) contains.

Android(4293182911)	3
<i>Conversions</i>	4
<i>Details</i>	6
<i>Harmonies</i>	11
<i>Previews</i>	23
<i>Color Blindness Simulation</i>	26
<i>CSS Examples</i>	29

Color

Android(4293182911)

Conversions

Conversions Part 1

Format	Color
Hex	E4C5BF
RGB	228, 197, 191
RGB Percent	89%, 77%, 75%
CMY	0.1059, 0.2275, 0.2510
CMYK	0.00, 0.14, 0.16, 0.11
HSL	10°, 41%, 82%
HSV	10°, 16%, 89%
XYZ	61.3651, 60.1881, 57.6734
YIQ	205.5850, 20.4020, 4.7060

Conversions

Conversions Part 2

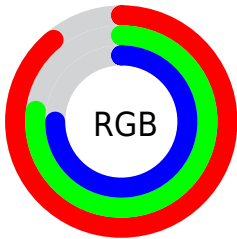
Format	Color
R _Y B	228, 198, 191
Decimal	14992831
CIE Lab	81.94, 9.99, 7.04
CIE LCh	82, 12.222, 35.178
Yxy	60.1881, 0.3424, 0.3358
Android (android.graphics.Color)	4293182911 (0xFFE4C5BF)
YUV	205.5850, -7.1904, 19.6580
Hunter-Lab	77.5810, 5.4235, 10.2307

Details

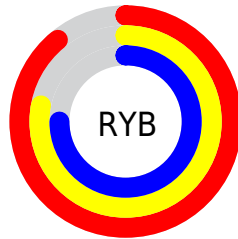
The Android color `4293182911` is a light color, and the websafe version is hex `FFCCCC`. A complement of this color would be `4290764516`, and the grayscale version is `4291743438`.

A 20% lighter version of the original color is `4294967031`, and `4289499018` is the 20% darker color. If you saturate the color by 10%, you get `4293178024`, and if you desaturate by 10%, it is `4293187798`.

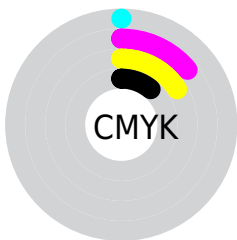
Distribution



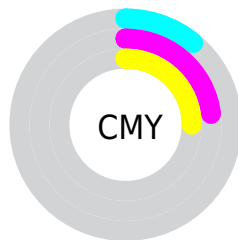
- Red (89%)
- Green (77%)
- Blue (75%)



- Red (89%)
- Yellow (78%)
- Blue (75%)



- Cyan (0%)
- Magenta (14%)
- Yellow (16%)
- Black (11%)



- Cyan (11%)
- Magenta (23%)
- Yellow (25%)

Brightness & Saturation Gradients

These gradients show how the Android color 4293182911 changes by changing the brightness by 10 percent. The first figure shows a shift by +10% for each color and the second figure -10%.

Similar to the brightness gradients but the following saturation gradients show a change of the Android color 4293182911 by changing the saturation by 10% instead.

 4293182911

 4293182911

4294967295

 4291340964

 4294967031

 4289499018

 4287723120

 4286012760

 4284368193

 4282789675

 4281276950

 4279959552

 4278190080

 4293182911

 4293182911

 4293178024

 4293187798

 4293173137

 4293192685

 4293168251

 4293197567

 4293163364

 4293197823

 4293158221

 4293153334

 4293148447

 4293143561

 4293141760

Harmonies

Analogous

The Analogous color harmony consists of three colors that are next to each other on the color wheel.



4293182666



4293182911



4292790455

Triad

The Triadic color harmony groups three colors that are evenly spaced from another and form a triangle on the color wheel.



4293182911



4290433730



4290956514

Complementary

The Complementary color scheme is a pair of colors which are on the opposite of each other on the color wheel.



4293182911



4290764516

Split Complementary

Split-complementary colors differ from the complementary color scheme. The scheme consists of three colors, the original color and two neighbors of the complement color.



4290171104



4293182911



4289844173

Square

The Square scheme is like the rectangle color scheme, but the four colors are evenly spaced on the color wheel.



4293182911



4291219385



4289712856



4291938526

Rectangle

The Rectangle color scheme consists of four colors that form a rectangle on the color wheel.



4293182911



4292332213



4289712856



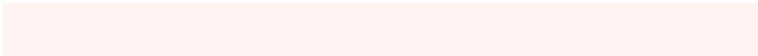
4290694626

Sweetspot

The Sweet Spot groups the original color and five complimentary colors.



4293182911



4294964466



4293181406



4286609784



4278190080



4286611584

Same Dimension

The Same Dimension uses a secret algorithm to generate beautiful new colors.



4293182911



4294956751



4293187519



4285753703



4289928448



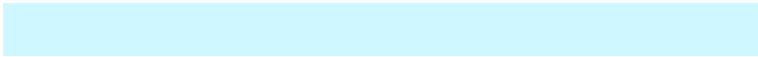
4281534464

Inverse Universe

The Inverse Universe completely reimagines the original color for something new.



4290764516



4291819519



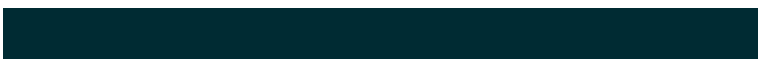
4290759908



4284969331



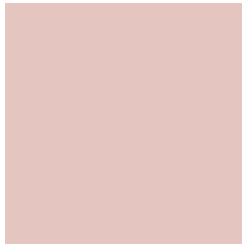
4278228659



4278201139

Previews

White Background



This preview shows how the Android color 4293182911 looks on a white background.

Color Contrast Check

Large Text (above 18pt) WCAG AA × Fail

Any Text WCAG AA × Fail

Large Text (above 18pt) WCAG AAA × Fail

Any Text WCAG AAA × Fail

Black Background



This preview shows how the Android color 4293182911 looks on a black background.

Color Contrast Check

Large Text (above 18pt) WCAG AA ✓ Pass

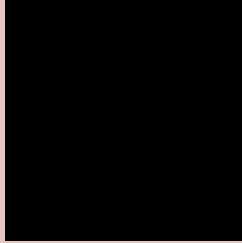
Any Text WCAG AA ✓ Pass

Large Text (above 18pt) WCAG AAA ✓ Pass

Any Text WCAG AAA ✓ Pass

If you want to check with other color combinations, try the [Color Contrast Checker](#).

Android 4293182911 Background



This preview shows how black text looks on a background with the Android color 4293182911.



This preview shows how white text looks on a background with the Android color 4293182911.

Color Blindness Simulation

Color vision deficiency is a very complex topic, and I could not describe the different causes any better than Wikipedia does, so if you want to learn more, you should check out their [article about color blindness](#).

Dichromacy



Original Color
4293182911

Protanopia
4292004802

Deuteranopia
4293182911



Tritanopia
4293313233

Trichromacy



Original Color
4293182911

Protanomaly
4292463041

Deuteranomaly
4293182911

Tritanomaly
4293247946

Monochromacy



Original Color
4293182911

Achromatopsia
4291743438

Achromatomaly
4292266953

CSS Examples

Text

The CSS property to change the color of the text to Android 4293182911 is called "color". The color property can be set on classes, ids or directly on the HTML element.

This example shows how text in the color `rgb(228, 197, 191)` looks like.

```
.text, #text, p{  
    color:rgb(228, 197, 191)  
}
```

If you want to add a text shadow in that color use the text-shadow property, you can generate a text shadow directly with our [CSS Text Shadow Generator](#).

Here you see how black text with a 4 pixel rgb(228, 197, 191) colored shadow looks like.

```
.shadow{ text-shadow: 4px 4px 2px rgb(228, 197, 191) }
```

Border

The CSS property to change the border of an element to Android 4293182911 is called "border". The border property can be set on classes, ids or directly on the HTML element.

This example shows the color as border, it can be applied via the CSS property "border" or "border-color".

```
.border, #border, table{ border:4px solid rgb(228, 197, 191) }
```

If only the border color should be changed use the property `border-color`.

```
.border{ border-color:rgb(228, 197, 191) }
```

If you want to add a box shadow in that color use:

Here you see how a box with a 4 pixel `rgb(228, 197, 191)` colored shadow looks like.

```
.boxshadow{ -moz-box-shadow:4px 4px 4px  
4px rgb(228, 197, 191); -webkit-box-  
shadow:4px 4px 4px 4px rgb(228, 197, 191);  
box-shadow:4px 4px 4px 4px rgb(228, 197,  
191) }
```

Background

The CSS property to change the background color of an element to Android 4293182911 is called "background". The background property can be set on classes, ids or directly on the HTML element.

```
.background, #background, body{  
background: rgb(228, 197, 191) }
```

If only the background color should be changed can be used:

```
.background{ background-color: rgb(228,  
197, 191) }
```

This example shows the color as background, it is applied via the CSS property "background".

To optimize and compress your CSS code, you can use our [online CSS compressor and optimizer](#) based on csstidy. If you want to create a linear or radial gradient as background or border, check our [CSS Gradient Generator](#).

Hey! You found this booklet interesting? Support Converting Colors with the new Membership Option!

The pro membership hides all ads, plus gives you double the colors in the color bucket, and more awesome pro features!

[Learn more, Memberships starting at \\$2.50/m!](#)

**Follow me
on Twitter!**

@ConvertingColor