

Converting Colors

Android(4293209967)

Have a look what the booklet for
Android(4293209967) contains.

Android(4293209967)	3
<i>Conversions</i>	4
<i>Details</i>	6
<i>Harmonies</i>	11
<i>Previews</i>	23
<i>Color Blindness Simulation</i>	26
<i>CSS Examples</i>	29

Color

Android(4293209967)

Conversions

Conversions Part 1

Format	Color
Hex	E52F6F
RGB	229, 47, 111
RGB Percent	90%, 18%, 44%
CMY	0.1020, 0.8157, 0.5647
CMYK	0.00, 0.79, 0.52, 0.10
HSL	339°, 78%, 54%
HSV	339°, 79%, 90%
XYZ	36.1989, 19.8387, 16.9603
YIQ	108.7140, 87.9280, 58.4880

Conversions

Conversions Part 2

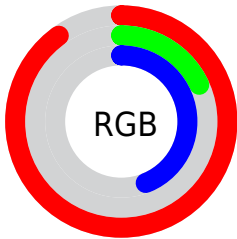
Format	Color
R_{YB}	229, 47, 111
Decimal	15019887
CIE _{Lab}	51.65, 70.81, 9.04
CIE _{LCh}	52, 71.389, 7.271
Yxy	19.8387, 0.4959, 0.2718
Android (android.graphics.Color)	4293209967 (0xFFE52F6F)
YUV	108.7140, 1.1270, 105.4908
Hunter-Lab	44.5407, 67.1232, 8.6019

Details

The Android color **4293209967** is a dark color, and the websafe version is hex **CC3366**. The color can be described as dark washed rose. A complement of this color would be **4281329061**, and the grayscale version is **4285361517**.

A 20% lighter version of the original color is **4294930338**, and **4289134656** is the 20% darker color. If you saturate the color by 10%, you get **4293204064**, and if you desaturate by 10%, it is **4293215870**.

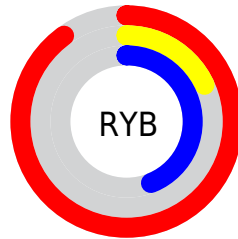
Distribution



Red (90%)

Green (18%)

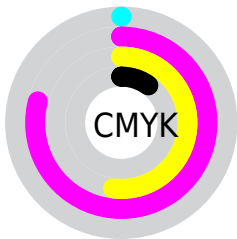
Blue (44%)



Red (90%)

Yellow (18%)

Blue (44%)

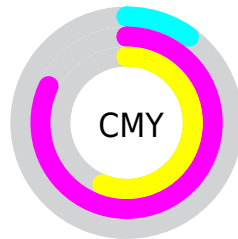


Cyan (0%)

Magenta (79%)

Yellow (52%)

Black (10%)



Cyan (10%)

Magenta (82%)

Yellow (56%)

Brightness & Saturation Gradients

These gradients show how the Android color 4293209967 changes by changing the brightness by 10 percent. The first figure shows a shift by +10% for each color and the second figure -10%.

Similar to the brightness gradients but the following saturation gradients show a change of the Android color 4293209967 by changing the saturation by 10% instead.



4293209967



4293209967

4294967295



4291166295



4294930338



4289134656



4294938045



4287103018



4294945497



4285136919



4294953205



4283301891



4294960895



4281204738



4278190080



4293209967



4293209967



4293204064



4293215870

 4293198161

 4293221773

 4293197905

 4293227676

 4293233578

 4293239481

 4293245128

 4293251031

 4293256934

 4293262837

Harmonies

Analogous

The Analogous color harmony consists of three colors that are next to each other on the color wheel.



4291707308



4293209967



4292560692

Triad

The Triadic color harmony groups three colors that are evenly spaced from another and form a triangle on the color wheel.



4293209967



4282682368



4278226668

Complementary

The Complementary color scheme is a pair of colors which are on the opposite of each other on the color wheel.



4293209967



4281329061

Split Complementary

Split-complementary colors differ from the complementary color scheme. The scheme consists of three colors, the original color and two neighbors of the complement color.



4278228420



4293209967



4278227785

Square

The Square scheme is like the rectangle color scheme, but the four colors are evenly spaced on the color wheel.



4293209967



4287134976



4278228617



4278222582

Rectangle

The Rectangle color scheme consists of four colors that form a rectangle on the color wheel.



4293209967



4291255299



4278228617



4278227426

Sweetspot

The Sweet Spot groups the original color and five complimentary colors.



4293209967



4294951639



4288819173



4286602088



4278190080



4286611584

Same Dimension

The Same Dimension uses a secret algorithm to generate beautiful new colors.



4293209967



4294905186



4293216047



4285753195



4289921087



4281532434

Inverse Universe

The Inverse Universe completely reimagines the original color for something new.



4293209967



4294905186



4281322981



4285753195



4289921087



4281532434

Previews

White Background



This preview shows how the Android color 4293209967 looks on a white background.

Color Contrast Check

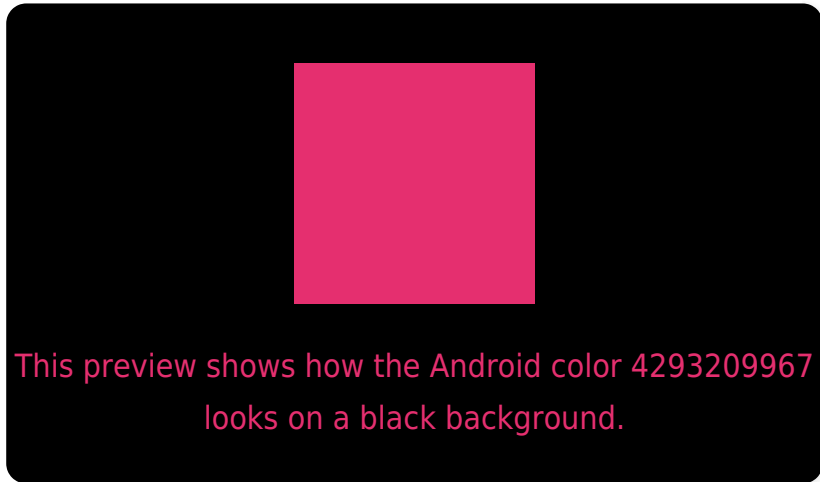
Large Text (above 18pt) WCAG AA ✓ Pass

Any Text WCAG AA ✗ Fail

Large Text (above 18pt) WCAG AAA ✗ Fail

Any Text WCAG AAA ✗ Fail

Black Background



Color Contrast Check

Large Text (above 18pt) WCAG AA ✓ Pass

Any Text WCAG AA ✓ Pass

Large Text (above 18pt) WCAG AAA ✓ Pass

Any Text WCAG AAA × Fail

If you want to check with other color combinations, try the [Color Contrast Checker](#).

Android 4293209967 Background



This preview shows how black text looks on a background with the Android color 4293209967.



This preview shows how white text looks on a background with the Android color 4293209967.

Color Blindness Simulation

Color vision deficiency is a very complex topic, and I could not describe the different causes any better than Wikipedia does, so if you want to learn more, you should check out their [article about color blindness](#).

Dichromacy

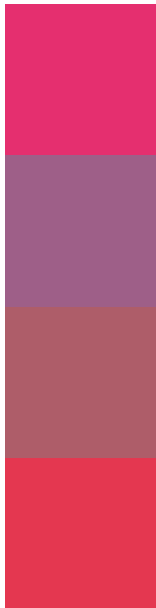


Original Color
4293209967

Protanopia
4285889431

Deuteranopia
4287592294

Trichromacy



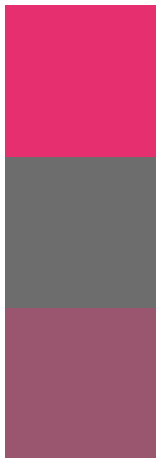
Original Color
4293209967

Protanomaly
4288569224

Deuteranomaly
4289617257

Tritanomaly
4293146448

Monochromacy



Original Color
4293209967

Achromatopsia
4285361517

Achromatomaly
4288239214

CSS Examples

Text

The CSS property to change the color of the text to Android 4293209967 is called "color". The color property can be set on classes, ids or directly on the HTML element.

This example shows how text in the color `rgb(229, 47, 111)` looks like.

```
.text, #text, p{  
  color:rgb(229, 47, 111)  
}
```

If you want to add a text shadow in that color use the text-shadow property, you can generate a text shadow directly with our [CSS Text Shadow Generator](#).

Here you see how black text with a 4 pixel rgb(229, 47, 111) colored shadow looks like.

```
.shadow{ text-shadow: 4px 4px 2px rgb(229, 47, 111) }
```

Border

The CSS property to change the border of an element to Android 4293209967 is called "border". The border property can be set on classes, ids or directly on the HTML element.

This example shows the color as border, it can be applied via the CSS property "border" or "border-color".

```
.border, #border, table{ border:4px solid rgb(229, 47, 111) }
```

If only the border color should be changed use the property `border-color`.

```
.border{ border-color:rgb(229, 47, 111) }
```

If you want to add a box shadow in that color use:

Here you see how a box with a 4 pixel `rgb(229, 47, 111)` colored shadow looks like.

```
.boxshadow{ -moz-box-shadow:4px 4px 4px  
4px rgb(229, 47, 111); -webkit-box-  
shadow:4px 4px 4px 4px rgb(229, 47, 111);  
box-shadow:4px 4px 4px 4px rgb(229, 47,  
111) }
```

Background

The CSS property to change the background color of an element to Android 4293209967 is called "background". The background property can be set on classes, ids or directly on the HTML element.

```
.background, #background, body{  
background: rgb(229, 47, 111) }
```

If only the background color should be changed can be used:

```
.background{ background-color: rgb(229, 47,  
111) }
```

This example shows the color as background, it is applied via the CSS property "background".

To optimize and compress your CSS code, you can use our [online CSS compressor and optimizer](#) based on csstidy. If you want to create a linear or radial gradient as background or border, check our [CSS Gradient Generator](#).

Hey! You found this booklet interesting? Support Converting Colors with the new Membership Option!

The pro membership hides all ads, plus gives you double the colors in the color bucket, and more awesome pro features!

[Learn more, Memberships starting at \\$2.50/m!](#)

**Follow me
on Twitter!**

@ConvertingColor