

Converting Colors

Android(4293212776)

Have a look what the booklet for
Android(4293212776) contains.

Android(4293212776)	3
<i>Conversions</i>	4
<i>Details</i>	6
<i>Harmonies</i>	11
<i>Previews</i>	23
<i>Color Blindness Simulation</i>	26
<i>CSS Examples</i>	29

Color

Android(4293212776)

Conversions

Conversions Part 1

Format	Color
Hex	E53A68
RGB	229, 58, 104
RGB Percent	90%, 23%, 41%
CMY	0.1020, 0.7725, 0.5922
CMYK	0.00, 0.75, 0.55, 0.10
HSL	344°, 77%, 56%
HSV	344°, 75%, 90%
XYZ	36.3248, 20.6836, 15.1745
YIQ	114.3730, 87.1500, 50.5580

Conversions

Conversions Part 2

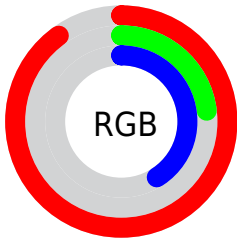
Format	Color
R_{YB}	229, 58, 104
Decimal	15022696
CIE _{Lab}	52.60, 67.15, 14.59
CIE _{LCh}	53, 68.718, 12.254
Yxy	20.6836, 0.5032, 0.2865
Android (android.graphics.Color)	4293212776 (0xFFE53A68)
YUV	114.3730, -5.1139, 100.5279
Hunter-Lab	45.4792, 62.9816, 12.0529

Details

The Android color **4293212776** is a dark color, and the websafe version is hex **CC3366**. The color can be described as dark washed rose. A complement of this color would be **4282049975**, and the grayscale version is **4285690482**.

A 20% lighter version of the original color is **4294932379**, and **4289134650** is the 20% darker color. If you saturate the color by 10%, you get **4293206871**, and if you desaturate by 10%, it is **4293218681**.

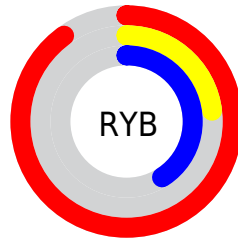
Distribution



Red (90%)

Green (23%)

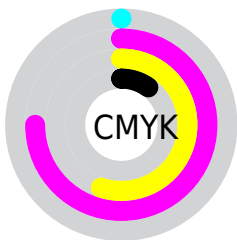
Blue (41%)



Red (90%)

Yellow (23%)

Blue (41%)

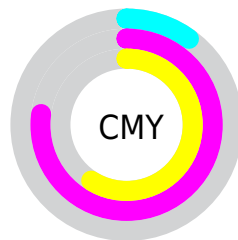


Cyan (0%)

Magenta (75%)

Yellow (55%)

Black (10%)



Cyan (10%)

Magenta (77%)

Yellow (59%)

Brightness & Saturation Gradients

These gradients show how the Android color 4293212776 changes by changing the brightness by 10 percent. The first figure shows a shift by +10% for each color and the second figure -10%.

Similar to the brightness gradients but the following saturation gradients show a change of the Android color 4293212776 by changing the saturation by 10% instead.



4293212776



4293212776

4294967295



4291170128



4294932379



4289134650



4294939830



4287103013



4294947281



4285136912



4294954733



4283236355



4294962431



4281270274



4278190080



4293212776



4293212776



4293206871



4293218681

 4293200967

 4293224585

 4293197886

 4293230490

 4293236395

 4293242044

 4293247948

 4293253853

 4293259758

 4293263359

Harmonies

Analogous

The Analogous color harmony consists of three colors that are next to each other on the color wheel.



4292101027



4293212776



4292301360

Triad

The Triadic color harmony groups three colors that are evenly spaced from another and form a triangle on the color wheel.



4293212776



4282093335



4278226670

Complementary

The Complementary color scheme is a pair of colors which are on the opposite of each other on the color wheel.



4293212776



4282049975

Split Complementary

Split-complementary colors differ from the complementary color scheme. The scheme consists of three colors, the original color and two neighbors of the complement color.



4278228684



4293212776



4278228567

Square

The Square scheme is like the rectangle color scheme, but the four colors are evenly spaced on the color wheel.



4293212776



4286677504



4278229141



4278222322

Rectangle

The Rectangle color scheme consists of four colors that form a rectangle on the color wheel.



4293212776



4290864384



4278229141



4278227686

Sweetspot

The Sweet Spot groups the original color and five complimentary colors.



4293212776



4294952918



4290067173



4286602855



4278190080



4286611584

Same Dimension

The Same Dimension uses a secret algorithm to generate beautiful new colors.



4293212776



4294908247



4293222202



4285753194



4289921072



4281532430

Inverse Universe

The Inverse Universe completely reimagines the original color for something new.



4293212776



4294908247



4282040549



4285753194



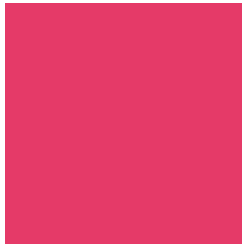
4289921072



4281532430

Previews

White Background



This preview shows how the Android color 4293212776 looks on a white background.

Color Contrast Check

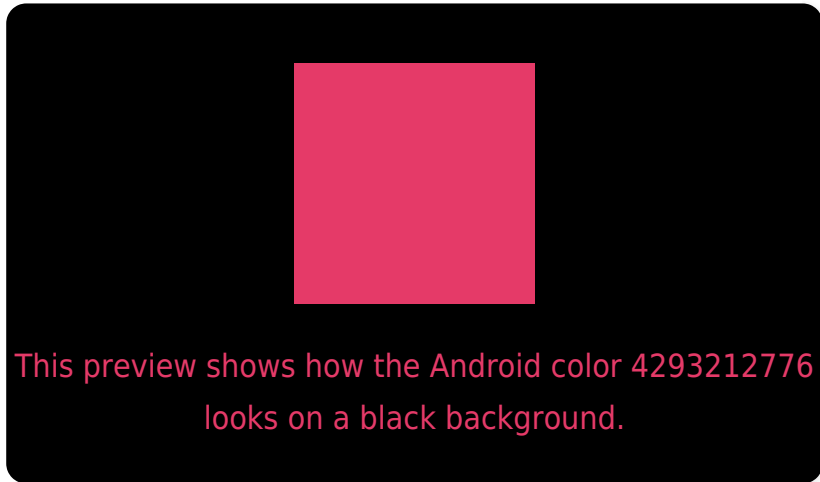
Large Text (above 18pt) WCAG AA ✓ Pass

Any Text WCAG AA ✗ Fail

Large Text (above 18pt) WCAG AAA ✗ Fail

Any Text WCAG AAA ✗ Fail

Black Background



Color Contrast Check

Large Text (above 18pt) WCAG AA ✓ Pass

Any Text WCAG AA ✓ Pass

Large Text (above 18pt) WCAG AAA ✓ Pass

Any Text WCAG AAA × Fail

If you want to check with other color combinations, try the [Color Contrast Checker](#).

Android 4293212776 Background



This preview shows how black text looks on a background with the Android color 4293212776.



This preview shows how white text looks on a background with the Android color 4293212776.

Color Blindness Simulation

Color vision deficiency is a very complex topic, and I could not describe the different causes any better than Wikipedia does, so if you want to learn more, you should check out their [article about color blindness](#).

Dichromacy

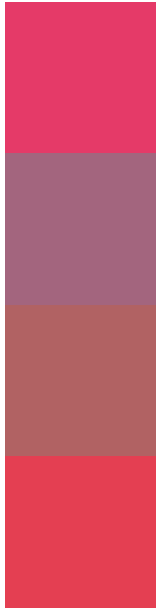


Original Color
4293212776

Protanopia
4286414218

Deuteranopia
4287920480

Trichromacy



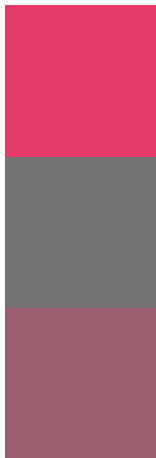
Original Color
4293212776

Protanomaly
4288898430

Deuteranomaly
4289815139

Tritanomaly
4293148498

Monochromacy



Original Color
4293212776

Achromatopsia
4285690482

Achromatomaly
4288437870

CSS Examples

Text

The CSS property to change the color of the text to Android 4293212776 is called "color". The color property can be set on classes, ids or directly on the HTML element.

This example shows how text in the color `rgb(229, 58, 104)` looks like.

```
.text, #text, p{  
    color:rgb(229, 58, 104)  
}
```

If you want to add a text shadow in that color use the text-shadow property, you can generate a text shadow directly with our [CSS Text Shadow Generator](#).

Here you see how black text with a 4 pixel rgb(229, 58, 104) colored shadow looks like.

```
.shadow{ text-shadow: 4px 4px 2px rgb(229, 58, 104) }
```

Border

The CSS property to change the border of an element to Android 4293212776 is called "border". The border property can be set on classes, ids or directly on the HTML element.

This example shows the color as border, it can be applied via the CSS property "border" or "border-color".

```
.border, #border, table{ border:4px solid rgb(229, 58, 104) }
```

If only the border color should be changed use the property `border-color`.

```
.border{ border-color:rgb(229, 58, 104) }
```

If you want to add a box shadow in that color use:

Here you see how a box with a 4 pixel `rgb(229, 58, 104)` colored shadow looks like.

```
.boxshadow{ -moz-box-shadow:4px 4px 4px  
4px rgb(229, 58, 104); -webkit-box-  
shadow:4px 4px 4px 4px rgb(229, 58, 104);  
box-shadow:4px 4px 4px 4px rgb(229, 58,  
104) }
```

Background

The CSS property to change the background color of an element to Android 4293212776 is called "background". The background property can be set on classes, ids or directly on the HTML element.

```
.background, #background, body{  
background: rgb(229, 58, 104) }
```

If only the background color should be changed can be used:

```
.background{ background-color: rgb(229, 58,  
104) }
```

This example shows the color as background, it is applied via the CSS property "background".

To optimize and compress your CSS code, you can use our [online CSS compressor and optimizer](#) based on csstidy. If you want to create a linear or radial gradient as background or border, check our [CSS Gradient Generator](#).

Hey! You found this booklet interesting? Support Converting Colors with the new Membership Option!

The pro membership hides all ads, plus gives you double the colors in the color bucket, and more awesome pro features!

[Learn more, Memberships starting at \\$2.50/m!](#)

**Follow me
on Twitter!**

@ConvertingColor