

Converting Colors

Android(4293216640)

Have a look what the booklet for
Android(4293216640) contains.

Android(4293216640)	3
<i>Conversions</i>	4
<i>Details</i>	6
<i>Harmonies</i>	11
<i>Previews</i>	23
<i>Color Blindness Simulation</i>	26
<i>CSS Examples</i>	29

Color

Android(4293216640)

Conversions

Conversions Part 1

Format	Color
Hex	E54980
RGB	229, 73, 128
RGB Percent	90%, 29%, 50%
CMY	0.1020, 0.7137, 0.4980
CMYK	0.00, 0.68, 0.44, 0.10
HSL	339°, 75%, 59%
HSV	339°, 68%, 90%
XYZ	38.5919, 22.9816, 22.8239
YIQ	125.9140, 75.3210, 50.1770

Conversions

Conversions Part 2

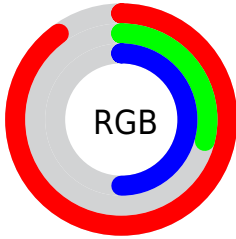
Format	Color
R_{YB}	229, 73, 128
Decimal	15026560
CIE _{Lab}	55.05, 63.98, 3.70
CIE _{LCh}	55, 64.087, 3.309
Yxy	22.9816, 0.4573, 0.2723
Android (android.graphics.Color)	4293216640 (0xFFE54980)
YUV	125.9140, 1.0284, 90.4064
Hunter-Lab	47.9391, 59.8024, 5.3293

Details

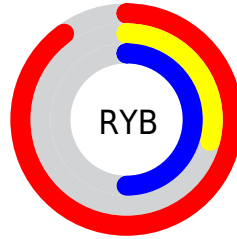
The Android color **4293216640** is a dark color, and the websafe version is hex **CC3366**. The color can be described as middle muted rose. A complement of this color would be **4283033006**, and the grayscale version is **4286479998**.

A 20% lighter version of the original color is **4294935477**, and **4289200207** is the 20% darker color. If you saturate the color by 10%, you get **4293210737**, and if you desaturate by 10%, it is **4293222543**.

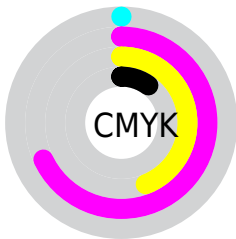
Distribution



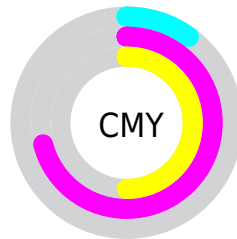
- Red (90%)
- Green (29%)
- Blue (50%)



- Red (90%)
- Yellow (29%)
- Blue (50%)



- Cyan (0%)
- Magenta (68%)
- Yellow (44%)
- Black (10%)



- Cyan (10%)
- Magenta (71%)
- Yellow (50%)

Brightness & Saturation Gradients

These gradients show how the Android color 4293216640 changes by changing the brightness by 10 percent. The first figure shows a shift by +10% for each color and the second figure -10%.

Similar to the brightness gradients but the following saturation gradients show a change of the Android color 4293216640 by changing the saturation by 10% instead.

 4293216640

 4293216640

4294967295

 4291176551

 4294935477

 4289200207

 4294942928

 4287234105

 4294950380

 4285333539

 4294957823

 4283432973

 4294965503

 4281597954

 4278190080

 4293216640

 4293216640

 4293210737

 4293222543

 4293204834

 4293228446

 4293198932

 4293234348

 4293197905

 4293240251

 4293245898

 4293251801

 4293257704

 4293263351

 4293263359

Harmonies

Analogous

The Analogous color harmony consists of three colors that are next to each other on the color wheel.



4291516599



4293216640



4292957514

Triad

The Triadic color harmony groups three colors that are evenly spaced from another and form a triangle on the color wheel.



4293216640



4284453399



4278228711

Complementary

The Complementary color scheme is a pair of colors which are on the opposite of each other on the color wheel.



4293216640



4283033006

Split Complementary

Split-complementary colors differ from the complementary color scheme. The scheme consists of three colors, the original color and two neighbors of the complement color.



4278230208



4293216640



4278229583

Square

The Square scheme is like the rectangle color scheme, but the four colors are evenly spaced on the color wheel.



4293216640



4288185088



4278230409



4278225395

Rectangle

The Rectangle color scheme consists of four colors that form a rectangle on the color wheel.



4293216640



4291847721



4278230409



4278229468

Sweetspot

The Sweet Spot groups the original color and five complimentary colors.



4293216640



4294954206



4289481189



4286603628



4278190080



4286611584

Same Dimension

The Same Dimension uses a secret algorithm to generate beautiful new colors.



4293216640



4294913656



4293221961



4285753195



4289921087



4281532434

Inverse Universe

The Inverse Universe completely reimagines the original color for something new.



4293216640



4294913656



4283027685



4285753195



4289921087



4281532434

Previews

White Background



This preview shows how the Android color 4293216640 looks on a white background.

Color Contrast Check

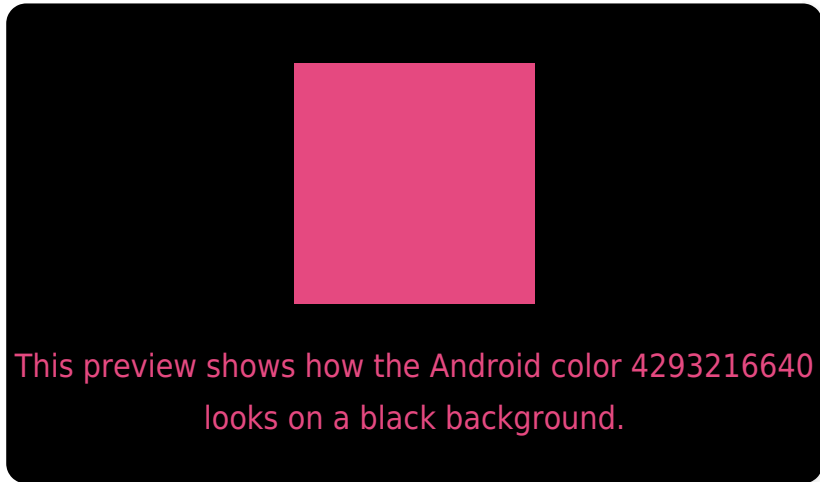
Large Text (above 18pt) WCAG AA ✓ Pass

Any Text WCAG AA × Fail

Large Text (above 18pt) WCAG AAA × Fail

Any Text WCAG AAA × Fail

Black Background



Color Contrast Check

Large Text (above 18pt) WCAG AA ✓ Pass

Any Text WCAG AA ✓ Pass

Large Text (above 18pt) WCAG AAA ✓ Pass

Any Text WCAG AAA × Fail

If you want to check with other color combinations, try the [Color Contrast Checker](#).

Android 4293216640 Background



This preview shows how black text looks on a background with the Android color 4293216640.



This preview shows how white text looks on a background with the Android color 4293216640.

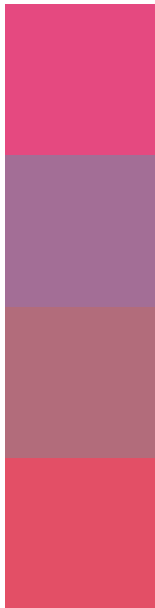
Color Blindness Simulation

Color vision deficiency is a very complex topic, and I could not describe the different causes any better than Wikipedia does, so if you want to learn more, you should check out their [article about color blindness](#).

Dichromacy



Trichromacy



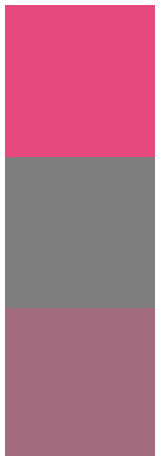
Original Color
4293216640

Protanomaly
4288900758

Deuteranomaly
4289883259

Tritanomaly
4293087078

Monochromacy



Original Color
4293216640

Achromatopsia
4286479998

Achromatomaly
4288899967

CSS Examples

Text

The CSS property to change the color of the text to Android 4293216640 is called "color". The color property can be set on classes, ids or directly on the HTML element.

This example shows how text in the color `rgb(229, 73, 128)` looks like.

```
.text, #text, p{  
    color:rgb(229, 73, 128)  
}
```

If you want to add a text shadow in that color use the text-shadow property, you can generate a text shadow directly with our [CSS Text Shadow Generator](#).

Here you see how black text with a 4 pixel rgb(229, 73, 128) colored shadow looks like.

```
.shadow{ text-shadow: 4px 4px 2px rgb(229, 73, 128) }
```

Border

The CSS property to change the border of an element to Android 4293216640 is called "border". The border property can be set on classes, ids or directly on the HTML element.

This example shows the color as border, it can be applied via the CSS property "border" or "border-color".

```
.border, #border, table{ border:4px solid rgb(229, 73, 128) }
```

If only the border color should be changed use the property border-color.

```
.border{ border-color:rgb(229, 73, 128) }
```

If you want to add a box shadow in that color use:

Here you see how a box with a 4 pixel rgb(229, 73, 128) colored shadow looks like.

```
.boxshadow{ -moz-box-shadow:4px 4px 4px  
4px rgb(229, 73, 128); -webkit-box-  
shadow:4px 4px 4px 4px rgb(229, 73, 128);  
box-shadow:4px 4px 4px 4px rgb(229, 73,  
128) }
```

Background

The CSS property to change the background color of an element to Android 4293216640 is called "background". The background property can be set on classes, ids or directly on the HTML element.

```
.background, #background, body{  
background: rgb(229, 73, 128) }
```

If only the background color should be changed can be used:

```
.background{ background-color: rgb(229, 73,  
128) }
```

This example shows the color as background, it is applied via the CSS property "background".

To optimize and compress your CSS code, you can use our [online CSS compressor and optimizer](#) based on csstidy. If you want to create a linear or radial gradient as background or border, check our [CSS Gradient Generator](#).

Hey! You found this booklet interesting? Support Converting Colors with the new Membership Option!

The pro membership hides all ads, plus gives you double the colors in the color bucket, and more awesome pro features!

[Learn more, Memberships starting at \\$2.50/m!](#)

**Follow me
on Twitter!**

@ConvertingColor