

Converting Colors

Android(4293221255)

Have a look what the booklet for
Android(4293221255) contains.

Android(4293221255)	3
<i>Conversions</i>	4
<i>Details</i>	6
<i>Harmonies</i>	11
<i>Previews</i>	23
<i>Color Blindness Simulation</i>	26
<i>CSS Examples</i>	29

Color

Android(4293221255)

Conversions

Conversions Part 1

Format	Color
Hex	E55B87
RGB	229, 91, 135
RGB Percent	90%, 36%, 53%
CMY	0.1020, 0.6431, 0.4706
CMYK	0.00, 0.60, 0.41, 0.10
HSL	341°, 73%, 63%
HSV	341°, 60%, 90%
XYZ	40.4274, 25.8895, 25.7881
YIQ	137.2780, 68.1240, 42.9400

Conversions

Conversions Part 2

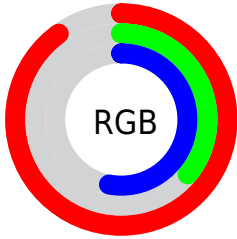
Format	Color
R _Y B	229, 91, 135
Decimal	15031175
CIE Lab	57.93, 57.35, 3.73
CIE LCh	58, 57.473, 3.718
Yxy	25.8895, 0.4389, 0.2811
Android (android.graphics.Color)	4293221255 (0xFFE55B87)
YUV	137.2780, -1.1231, 80.4402
Hunter-Lab	50.8817, 52.7818, 5.5676

Details

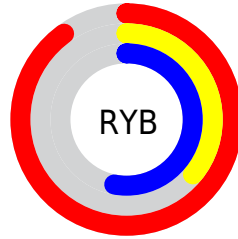
The Android color `4293221255` is a light color, and the websafe version is hex `FF6699`. The color can be described as light muted rose. A complement of this color would be `4284212665`, and the grayscale version is `4287203721`.

A 20% lighter version of the original color is `4294939580`, and `4289273430` is the 20% darker color. If you saturate the color by 10%, you get `4293215351`, and if you desaturate by 10%, it is `4293227159`.

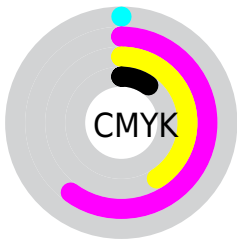
Distribution



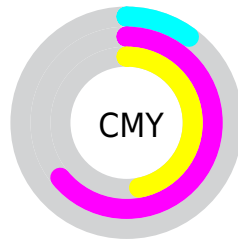
- Red (90%)
- Green (36%)
- Blue (53%)



- Red (90%)
- Yellow (36%)
- Blue (53%)



- Cyan (0%)
- Magenta (60%)
- Yellow (41%)
- Black (10%)



- Cyan (10%)
- Magenta (64%)
- Yellow (47%)

Brightness & Saturation Gradients

These gradients show how the Android color 4293221255 changes by changing the brightness by 10 percent. The first figure shows a shift by +10% for each color and the second figure -10%.

Similar to the brightness gradients but the following saturation gradients show a change of the Android color 4293221255 by changing the saturation by 10% instead.



4293221255



4293221255

4294967295



4291247982



4294939580



4289273430



4294946776



4287365183



4294954228



4285464617



4294961663



4283564053



4281860098



4279107584



4278190080



4293221255



4293221255

 4293215351

 4293227159

 4293209448

 4293233062

 4293203544

 4293238966

 4293197897

 4293244869

 4293250517

 4293256421

 4293262324

 4293263359

Harmonies

Analogous

The Analogous color harmony consists of three colors that are next to each other on the color wheel.



4291651257



4293221255



4292961366

Triad

The Triadic color harmony groups three colors that are evenly spaced from another and form a triangle on the color wheel.



4293221255



4285306928



4278230245

Complementary

The Complementary color scheme is a pair of colors which are on the opposite of each other on the color wheel.



4293221255



4284212665

Split Complementary

Split-complementary colors differ from the complementary color scheme. The scheme consists of three colors, the original color and two neighbors of the complement color.



4278231746



4293221255



4278231132

Square

The Square scheme is like the rectangle color scheme, but the four colors are evenly spaced on the color wheel.



4293221255



4288645913



4278231952



4278226928

Rectangle

The Rectangle color scheme consists of four colors that form a rectangle on the color wheel.



4293221255



4291981626



4278231952



4278231004

Sweetspot

The Sweet Spot groups the original color and five complimentary colors.



4293221255



4294955488



4290206693



4286604140



4278190080



4286611584

Same Dimension

The Same Dimension uses a secret algorithm to generate beautiful new colors.



4293221255



4294920066



4293227099



4285753195



4289921081



4281532432

Inverse Universe

The Inverse Universe completely reimagines the original color for something new.



4293221255



4294920066



4284206821



4285753195



4289921081



4281532432

Previews

White Background



This preview shows how the Android color 4293221255 looks on a white background.

Color Contrast Check

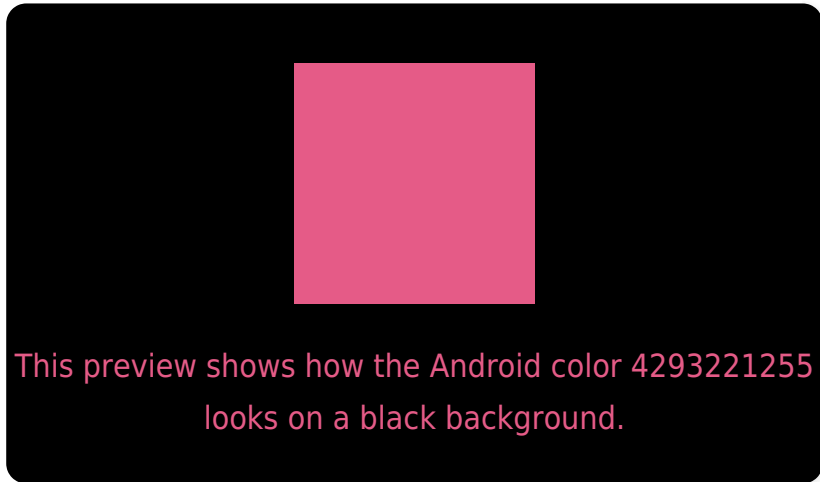
Large Text (above 18pt) WCAG AA ✓ Pass

Any Text WCAG AA × Fail

Large Text (above 18pt) WCAG AAA × Fail

Any Text WCAG AAA × Fail

Black Background



Color Contrast Check

Large Text (above 18pt) WCAG AA ✓ Pass

Any Text WCAG AA ✓ Pass

Large Text (above 18pt) WCAG AAA ✓ Pass

Any Text WCAG AAA × Fail

If you want to check with other color combinations, try the [Color Contrast Checker](#).

Android 4293221255 Background



This preview shows how black text looks on a background with the Android color 4293221255.




This preview shows how white text looks on a background with the Android color 4293221255.

Color Blindness Simulation

Color vision deficiency is a very complex topic, and I could not describe the different causes any better than Wikipedia does, so if you want to learn more, you should check out their [article about color blindness](#).

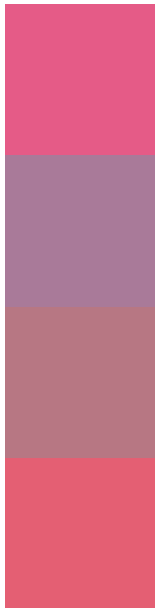
Dichromacy





Tritanopia
4293091688

Trichromacy



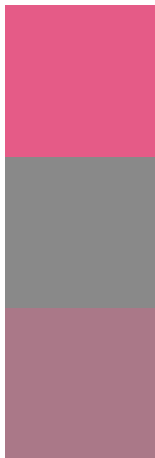
Original Color
4293221255

Protanomaly
4289297049

Deuteranomaly
4290213763

Tritanomaly
4293156723

Monochromacy



Original Color
4293221255

Achromatopsia
4287203721

Achromatomaly
4289362056

CSS Examples

Text

The CSS property to change the color of the text to Android 4293221255 is called "color". The color property can be set on classes, ids or directly on the HTML element.

This example shows how text in the color `rgb(229, 91, 135)` looks like.

```
.text, #text, p{  
    color:rgb(229, 91, 135)  
}
```

If you want to add a text shadow in that color use the text-shadow property, you can generate a text shadow directly with our [CSS Text Shadow Generator](#).

Here you see how black text with a 4 pixel rgb(229, 91, 135) colored shadow looks like.

```
.shadow{ text-shadow: 4px 4px 2px rgb(229, 91, 135) }
```

Border

The CSS property to change the border of an element to Android 4293221255 is called "border". The border property can be set on classes, ids or directly on the HTML element.

This example shows the color as border, it can be applied via the CSS property "border" or "border-color".

```
.border, #border, table{ border:4px solid rgb(229, 91, 135) }
```

If only the border color should be changed use the property `border-color`.

```
.border{ border-color:rgb(229, 91, 135) }
```

If you want to add a box shadow in that color use:

Here you see how a box with a 4 pixel `rgb(229, 91, 135)` colored shadow looks like.

```
.boxshadow{ -moz-box-shadow:4px 4px 4px 4px rgb(229, 91, 135); -webkit-box-shadow:4px 4px 4px 4px rgb(229, 91, 135); box-shadow:4px 4px 4px 4px rgb(229, 91, 135) }
```

Background

The CSS property to change the background color of an element to Android 4293221255 is called "background". The background property can be set on classes, ids or directly on the HTML element.

```
.background, #background, body{  
background: rgb(229, 91, 135) }
```

If only the background color should be changed can be used:

```
.background{ background-color: rgb(229, 91,  
135) }
```

This example shows the color as background, it is applied via the CSS property "background".

To optimize and compress your CSS code, you can use our [online CSS compressor and optimizer](#) based on csstidy. If you want to create a linear or radial gradient as background or border, check our [CSS Gradient Generator](#).

Hey! You found this booklet interesting? Support Converting Colors with the new Membership Option!

The pro membership hides all ads, plus gives you double the colors in the color bucket, and more awesome pro features!

[Learn more, Memberships starting at \\$2.50/m!](#)

**Follow me
on Twitter!**

@ConvertingColor