

# Converting Colors

Android(4293221517)

Have a look what the booklet for  
Android(4293221517) contains.

<b>Android(4293221517)</b> .....	3
<i><b>Conversions</b></i> .....	4
<i><b>Details</b></i> .....	6
<i><b>Harmonies</b></i> .....	11
<i><b>Previews</b></i> .....	23
<i><b>Color Blindness Simulation</b></i> .....	26
<i><b>CSS Examples</b></i> .....	29

# **Color**

**Android(4293221517)**

# Conversions

## Conversions Part 1

<b>Format</b>	<b>Color</b>
Hex	E55C8D
RGB	229, 92, 141
RGB Percent	90%, 36%, 55%
CMY	0.1020, 0.6392, 0.4471
CMYK	0.00, 0.60, 0.38, 0.10
HSL	339°, 72%, 63%
HSV	339°, 60%, 90%
XYZ	40.9480, 26.2354, 28.1050
YIQ	138.5490, 65.9230, 44.2830

# Conversions

## Conversions Part 2

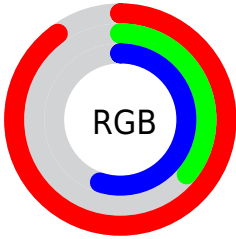
<b>Format</b>	<b>Color</b>
R <sub>YB</sub>	229, 92, 141
Decimal	15031437
CIE <sub>Lab</sub>	58.26, 57.55, 0.69
CIE <sub>LCh</sub>	58, 57.550, 0.689
Y <sub>xy</sub>	26.2354, 0.4297, 0.2753
Android (android.graphics.Color)	4293221517 (0xFFE55C8D)
YUV	138.5490, 1.2083, 79.3255
Hunter-Lab	51.2205, 53.0650, 3.3215

# Details

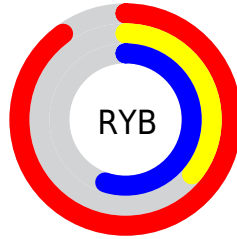
The Android color `4293221517` is a light color, and the websafe version is hex `FF6699`. The color can be described as light muted rose. A complement of this color would be `4284278196`, and the grayscale version is `4287269514`.

A 20% lighter version of the original color is `4294939842`, and `4289273947` is the 20% darker color. If you saturate the color by 10%, you get `4293215614`, and if you desaturate by 10%, it is `4293227420`.

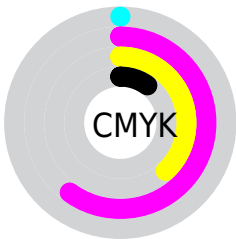
# Distribution



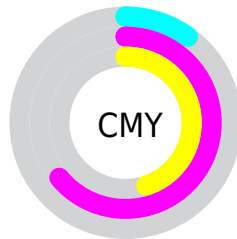
- Red (90%)
- Green (36%)
- Blue (55%)



- Red (90%)
- Yellow (36%)
- Blue (55%)



- Cyan (0%)
- Magenta (60%)
- Yellow (38%)
- Black (10%)



- Cyan (10%)
- Magenta (64%)
- Yellow (45%)

# Brightness & Saturation Gradients

These gradients show how the Android color 4293221517 changes by changing the brightness by 10 percent. The first figure shows a shift by +10% for each color and the second figure -10%.


Similar to the brightness gradients but the following saturation gradients show a change of the Android color 4293221517 by changing the saturation by 10% instead.



 4293221517

 4293221517

4294967295

 4291248244

 4294939842

 4289273947

 4294947038

 4287365188

 4294954491

 4285464622

 4294961919

 4283629593

 4281925634

 4279304192

 4278190080

 4293221517

 4293221517

 4293215614

 4293227420

 4293209712

 4293233322

 4293203809

 4293239225

 4293197906

 4293245128

 4293251031

 4293256677

 4293262580

 4293263359

# Harmonies

## Analogous

The Analogous color harmony consists of three colors that are next to each other on the color wheel.



4291455166



4293221517



4293157724

# Triad

The Triadic color harmony groups three colors that are evenly spaced from another and form a triangle on the color wheel.



4293221517



4285700141



4278230755

# Complementary

The Complementary color scheme is a pair of colors which are on the opposite of each other on the color wheel.



4293221517



4284278196

# Split Complementary

Split-complementary colors differ from the complementary color scheme. The scheme consists of three colors, the original color and two neighbors of the complement color.



4278231998



4293221517



4280262744

# Square

The Square scheme is like the rectangle color scheme, but the four colors are evenly spaced on the color wheel.



4293221517



4289038875



4278232204



4278227441

# Rectangle

The Rectangle color scheme consists of four colors that form a rectangle on the color wheel.



4293221517



4292243519



4278232204



4278231257



# Sweetspot

The Sweet Spot groups the original color and five complimentary colors.



4293221517



4294955490



4289944805



4286604141



4278190080



4286611584



# Same Dimension

The Same Dimension uses a secret algorithm to generate beautiful new colors.



4293221517



4294920073



4293226076



4285753195



4289921088



4281532434



# Inverse Universe

The Inverse Universe completely reimagines the original color for something new.



4293221517



4294920073



4284273637



4285753195



4289921088



4281532434



# Previews

## White Background



This preview shows how the Android color 4293221517 looks on a white background.

## Color Contrast Check

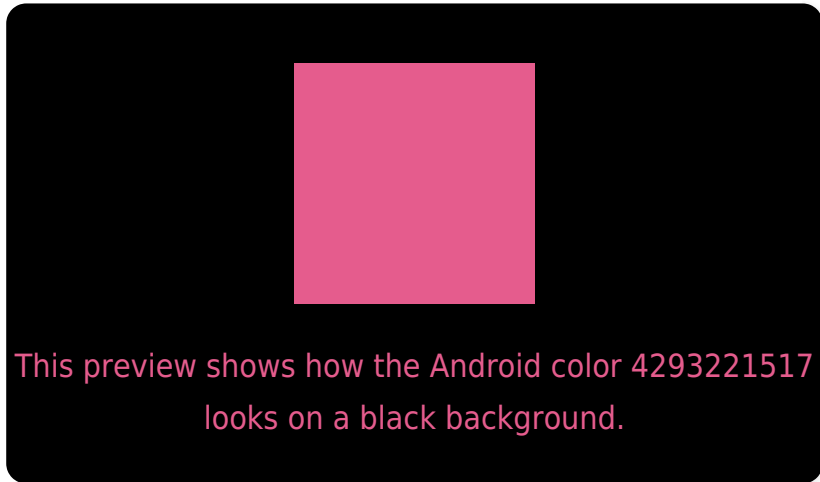
Large Text (above 18pt) WCAG AA ✓ Pass

Any Text WCAG AA ✗ Fail

Large Text (above 18pt) WCAG AAA ✗ Fail

Any Text WCAG AAA ✗ Fail

# Black Background



## Color Contrast Check

Large Text (above 18pt) WCAG AA ✓ Pass

Any Text WCAG AA ✓ Pass

Large Text (above 18pt) WCAG AAA ✓ Pass

Any Text WCAG AAA × Fail

If you want to check with other color combinations, try the [Color Contrast Checker](#).



# Android 4293221517 Background



This preview shows how black text looks on a background with the Android color 4293221517.



This preview shows how white text looks on a background with the Android color 4293221517.

# Color Blindness Simulation

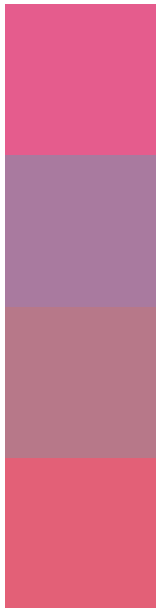
Color vision deficiency is a very complex topic, and I could not describe the different causes any better than Wikipedia does, so if you want to learn more, you should check out their [article about color blindness](#).

## Dichromacy





# Trichromacy



**Original Color**  
4293221517

**Protanomaly**  
4289297055

**Deuteranomaly**  
4290214025

**Tritanomaly**  
4293091447

# Monochromacy



**Original Color**  
4293221517

**Achromatopsia**  
4287335307

**Achromatomaly**  
4289493644

# CSS Examples

## Text

The CSS property to change the color of the text to Android 4293221517 is called "color". The color property can be set on classes, ids or directly on the HTML element.

This example shows how text in the color `rgb(229, 92, 141)` looks like.

```
.text, #text, p{  
    color:rgb(229, 92, 141)  
}
```

If you want to add a text shadow in that color use the text-shadow property, you can generate a text shadow directly with our [CSS Text Shadow Generator](#).

Here you see how black text with a 4 pixel rgb(229, 92, 141) colored shadow looks like.

```
.shadow{ text-shadow: 4px 4px 2px rgb(229, 92, 141) }
```

## Border

The CSS property to change the border of an element to Android 4293221517 is called "border". The border property can be set on classes, ids or directly on the HTML element.

This example shows the color as border, it can be applied via the CSS property "border" or "border-color".

```
.border, #border, table{ border:4px solid rgb(229, 92, 141) }
```

If only the border color should be changed use the property `border-color`.

```
.border{ border-color:rgb(229, 92, 141) }
```

If you want to add a box shadow in that color use:

Here you see how a box with a 4 pixel `rgb(229, 92, 141)` colored shadow looks like.

```
.boxshadow{ -moz-box-shadow:4px 4px 4px  
4px rgb(229, 92, 141); -webkit-box-  
shadow:4px 4px 4px 4px rgb(229, 92, 141);  
box-shadow:4px 4px 4px 4px rgb(229, 92,  
141) }
```

# Background

The CSS property to change the background color of an element to Android 4293221517 is called "background". The background property can be set on classes, ids or directly on the HTML element.

```
.background, #background, body{  
background: rgb(229, 92, 141) }
```

If only the background color should be changed can be used:

```
.background{ background-color: rgb(229, 92,  
141) }
```

This example shows the color as background, it is applied via the CSS property "background".

To optimize and compress your CSS code, you can use our [online CSS compressor and optimizer](#) based on csstidy. If you want to create a linear or radial gradient as background or border, check our [CSS Gradient Generator](#).



Hey! You found this booklet interesting? Support Converting Colors with the new Membership Option!

The pro membership hides all ads, plus gives you double the colors in the color bucket, and more awesome pro features!

**[Learn more, Memberships starting at \\$2.50/m!](#)**

**Follow me  
on Twitter!**

@ConvertingColor