

Converting Colors

Android(4293221752)

Have a look what the booklet for
Android(4293221752) contains.

Android(4293221752)	3
<i>Conversions</i>	4
<i>Details</i>	6
<i>Harmonies</i>	11
<i>Previews</i>	23
<i>Color Blindness Simulation</i>	26
<i>CSS Examples</i>	29

Color

Android(4293221752)

Conversions

Conversions Part 1

Format	Color
Hex	E55D78
RGB	229, 93, 120
RGB Percent	90%, 36%, 47%
CMY	0.1020, 0.6353, 0.5294
CMYK	0.00, 0.59, 0.48, 0.10
HSL	348°, 72%, 63%
HSV	348°, 59%, 90%
XYZ	39.6176, 25.8428, 20.6694
YIQ	136.7420, 72.3890, 37.2290

Conversions

Conversions Part 2

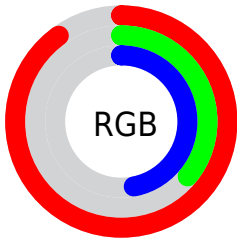
Format	Color
R_{YB}	229, 93, 120
Decimal	15031672
CIE _{Lab}	57.89, 55.02, 12.45
CIE _{LCh}	58, 56.407, 12.750
Yxy	25.8428, 0.4600, 0.3000
Android (android.graphics.Color)	4293221752 (0xFFE55D78)
YUV	136.7420, -8.2538, 80.9103
Hunter-Lab	50.8358, 50.1469, 11.4783

Details

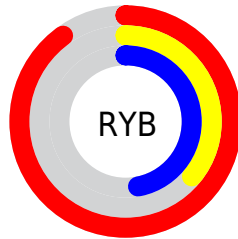
The Android color **4293221752** is a dark color, and the websafe version is hex **FF6699**. The color can be described as middle muted rose. A complement of this color would be **4284343754**, and the grayscale version is **4287203721**.

A 20% lighter version of the original color is **4294939820**, and **4289274440** is the 20% darker color. If you saturate the color by 10%, you get **4293215846**, and if you desaturate by 10%, it is **4293227658**.

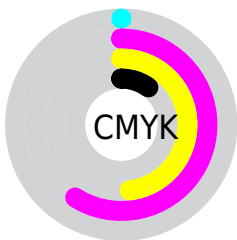
Distribution



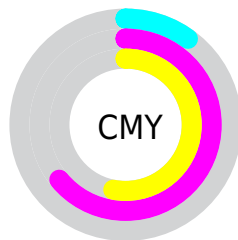
- Red (90%)
- Green (36%)
- Blue (47%)



- Red (90%)
- Yellow (36%)
- Blue (47%)



- Cyan (0%)
- Magenta (59%)
- Yellow (48%)
- Black (10%)



- Cyan (10%)
- Magenta (64%)
- Yellow (53%)

Brightness & Saturation Gradients

These gradients show how the Android color 4293221752 changes by changing the brightness by 10 percent. The first figure shows a shift by +10% for each color and the second figure -10%.

Similar to the brightness gradients but the following saturation gradients show a change of the Android color 4293221752 by changing the saturation by 10% instead.

 4293221752

 4293221752

4294967295

 4291248479

 4294939820

 4289274440

 4294947271

 4287299634

 4294954467

 4285399069

 4294961919

 4283564034

 4281729026

 4278648832

 4278190080

 4293221752

 4293221752

 4293215846

 4293227658

 4293209939

 4293233565

 4293204033

 4293239471

 4293198127

 4293245377

 4293197869

 4293251284

 4293256934

 4293262840

 4293263359

Harmonies

Analogous

The Analogous color harmony consists of three colors that are next to each other on the color wheel.



4292240042



4293221752



4292504138

Triad

The Triadic color harmony groups three colors that are evenly spaced from another and form a triangle on the color wheel.



4293221752



4284128062



4278229225

Complementary

The Complementary color scheme is a pair of colors which are on the opposite of each other on the color wheel.



4293221752



4284343754

Split Complementary

Split-complementary colors differ from the complementary color scheme. The scheme consists of three colors, the original color and two neighbors of the complement color.



4278231245



4293221752



4278231404

Square

The Square scheme is like the rectangle color scheme, but the four colors are evenly spaced on the color wheel.



4293221752



4287729439



4278231967



4283599340

Rectangle

The Rectangle color scheme consists of four colors that form a rectangle on the color wheel.



4293221752



4291328049



4278231967



4278230242

Sweetspot

The Sweet Spot groups the original color and five complimentary colors.



4293221752



4294955482



4291452389



4286604137



4278190080



4286611584

Same Dimension

The Same Dimension uses a secret algorithm to generate beautiful new colors.



4293221752



4294920814



4293232221



4285753194



4289921059



4281532426

Inverse Universe

The Inverse Universe completely reimagines the original color for something new.



4293221752



4294920814



4284333285



4285753194



4289921059



4281532426

Previews

White Background



This preview shows how the Android color 4293221752 looks on a white background.

Color Contrast Check

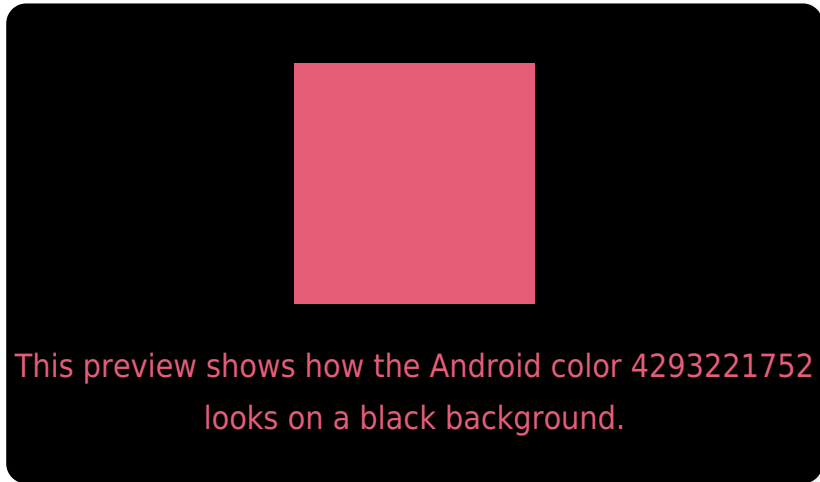
Large Text (above 18pt) WCAG AA ✓ Pass

Any Text WCAG AA ✗ Fail

Large Text (above 18pt) WCAG AAA ✗ Fail

Any Text WCAG AAA ✗ Fail

Black Background



Color Contrast Check

Large Text (above 18pt) WCAG AA ✓ Pass

Any Text WCAG AA ✓ Pass

Large Text (above 18pt) WCAG AAA ✓ Pass

Any Text WCAG AAA × Fail

If you want to check with other color combinations, try the [Color Contrast Checker](#).

Android 4293221752 Background



This preview shows how black text looks on a background with the Android color 4293221752.



This preview shows how white text looks on a background with the Android color 4293221752.

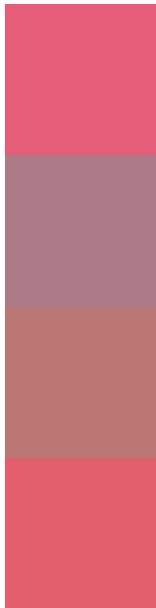
Color Blindness Simulation

Color vision deficiency is a very complex topic, and I could not describe the different causes any better than Wikipedia does, so if you want to learn more, you should check out their [article about color blindness](#).

Dichromacy



Trichromacy



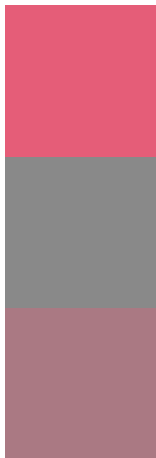
Original Color
4293221752

Protanomaly
4289559175

Deuteranomaly
4290410356

Tritanomaly
4293156717

Monochromacy



Original Color
4293221752

Achromatopsia
4287203721

Achromatomaly
4289362307

CSS Examples

Text

The CSS property to change the color of the text to Android 4293221752 is called "color". The color property can be set on classes, ids or directly on the HTML element.

This example shows how text in the color `rgb(229, 93, 120)` looks like.

```
.text, #text, p{  
    color:rgb(229, 93, 120)  
}
```

If you want to add a text shadow in that color use the text-shadow property, you can generate a text shadow directly with our [CSS Text Shadow Generator](#).

Here you see how black text with a 4 pixel rgb(229, 93, 120) colored shadow looks like.

```
.shadow{ text-shadow: 4px 4px 2px rgb(229, 93, 120) }
```

Border

The CSS property to change the border of an element to Android 4293221752 is called "border". The border property can be set on classes, ids or directly on the HTML element.

This example shows the color as border, it can be applied via the CSS property "border" or "border-color".

```
.border, #border, table{ border:4px solid rgb(229, 93, 120) }
```

If only the border color should be changed use the property `border-color`.

```
.border{ border-color:rgb(229, 93, 120) }
```

If you want to add a box shadow in that color use:

Here you see how a box with a 4 pixel `rgb(229, 93, 120)` colored shadow looks like.

```
.boxshadow{ -moz-box-shadow:4px 4px 4px  
4px rgb(229, 93, 120); -webkit-box-  
shadow:4px 4px 4px 4px rgb(229, 93, 120);  
box-shadow:4px 4px 4px 4px rgb(229, 93,  
120) }
```

Background

The CSS property to change the background color of an element to Android 4293221752 is called "background". The background property can be set on classes, ids or directly on the HTML element.

```
.background, #background, body{  
background: rgb(229, 93, 120) }
```

If only the background color should be changed can be used:

```
.background{ background-color: rgb(229, 93,  
120) }
```

This example shows the color as background, it is applied via the CSS property "background".

To optimize and compress your CSS code, you can use our [online CSS compressor and optimizer](#) based on csstidy. If you want to create a linear or radial gradient as background or border, check our [CSS Gradient Generator](#).

Hey! You found this booklet interesting? Support Converting Colors with the new Membership Option!

The pro membership hides all ads, plus gives you double the colors in the color bucket, and more awesome pro features!

[Learn more, Memberships starting at \\$2.50/m!](#)

**Follow me
on Twitter!**

@ConvertingColor