

Converting Colors

Android(4293221761)

Have a look what the booklet for
Android(4293221761) contains.

Android(4293221761)	3
<i>Conversions</i>	4
<i>Details</i>	6
<i>Harmonies</i>	11
<i>Previews</i>	23
<i>Color Blindness Simulation</i>	26
<i>CSS Examples</i>	29

Color

Android(4293221761)

Conversions

Conversions Part 1

Format	Color
Hex	E55D81
RGB	229, 93, 129
RGB Percent	90%, 36%, 51%
CMY	0.1020, 0.6353, 0.4941
CMYK	0.00, 0.59, 0.44, 0.10
HSL	344°, 72%, 63%
HSV	344°, 59%, 90%
XYZ	40.1899, 26.0717, 23.6830
YIQ	137.7680, 69.5000, 40.0280

Conversions

Conversions Part 2

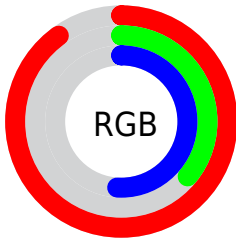
Format	Color
R _Y B	229, 93, 129
Decimal	15031681
CIE Lab	58.11, 55.87, 7.49
CIE LCh	58, 56.368, 7.634
Yxy	26.0717, 0.4468, 0.2899
Android (android.graphics.Color)	4293221761 (0xFFE55D81)
YUV	137.7680, -4.3226, 80.0105
Hunter-Lab	51.0604, 51.1423, 8.2423

Details

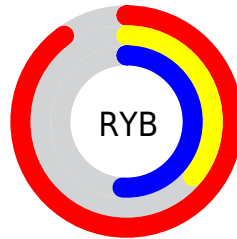
The Android color **4293221761** is a light color, and the websafe version is hex **FF6699**. The color can be described as light muted rose. A complement of this color would be **4284343745**, and the grayscale version is **4287269514**.

A 20% lighter version of the original color is **4294939830**, and **4289274448** is the 20% darker color. If you saturate the color by 10%, you get **4293215856**, and if you desaturate by 10%, it is **4293227666**.

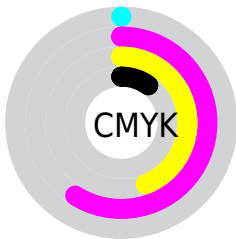
Distribution



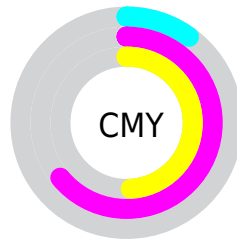
- Red (90%)
- Green (36%)
- Blue (51%)



- Red (90%)
- Yellow (36%)
- Blue (51%)



- Cyan (0%)
- Magenta (59%)
- Yellow (44%)
- Black (10%)



- Cyan (10%)
- Magenta (64%)
- Yellow (49%)

Brightness & Saturation Gradients


These gradients show how the Android color 4293221761 changes by changing the brightness by 10 percent. The first figure shows a shift by +10% for each color and the second figure -10%.

Similar to the brightness gradients but the following saturation gradients show a change of the Android color 4293221761 by changing the saturation by 10% instead.

 4293221761

 4293221761

4294967295

 4291248488

 4294939830

 4289274448

 4294947281

 4287365177

 4294954477

 4285464612

 4294962175

 4283564047

 4281860098

 4278976512

 4278190080

 4293221761

 4293221761

 4293215856

 4293227666

 4293209951

 4293233571

 4293204046

 4293239476

 4293198142

 4293245380

 4293197885

 4293251285

 4293256934

 4293262839

 4293263359

Harmonies

Analogous

The Analogous color harmony consists of three colors that are next to each other on the color wheel.



4291913138



4293221761



4292765778

Triad

The Triadic color harmony groups three colors that are evenly spaced from another and form a triangle on the color wheel.



4293221761



4284848696



4278229991

Complementary

The Complementary color scheme is a pair of colors which are on the opposite of each other on the color wheel.



4293221761



4284343745

Split Complementary

Split-complementary colors differ from the complementary color scheme. The scheme consists of three colors, the original color and two neighbors of the complement color.



4278231751



4293221761



4278231396

Square

The Square scheme is like the rectangle color scheme, but the four colors are evenly spaced on the color wheel.



4293221761



4288318750



4278231959



4281896430

Rectangle

The Rectangle color scheme consists of four colors that form a rectangle on the color wheel.



4293221761



4291720504



4278231959



4278230750

Sweetspot

The Sweet Spot groups the original color and five complimentary colors.



4293221761



4294955485



4290862565



4286604139



4278190080



4286611584

Same Dimension

The Same Dimension uses a secret algorithm to generate beautiful new colors.



4293221761



4294920826



4293229917



4285753194



4289921071



4281532429

Inverse Universe

The Inverse Universe completely reimagines the original color for something new.



4293221761



4294920826



4284335589



4285753194



4289921071



4281532430

Previews

White Background



This preview shows how the Android color 4293221761 looks on a white background.

Color Contrast Check

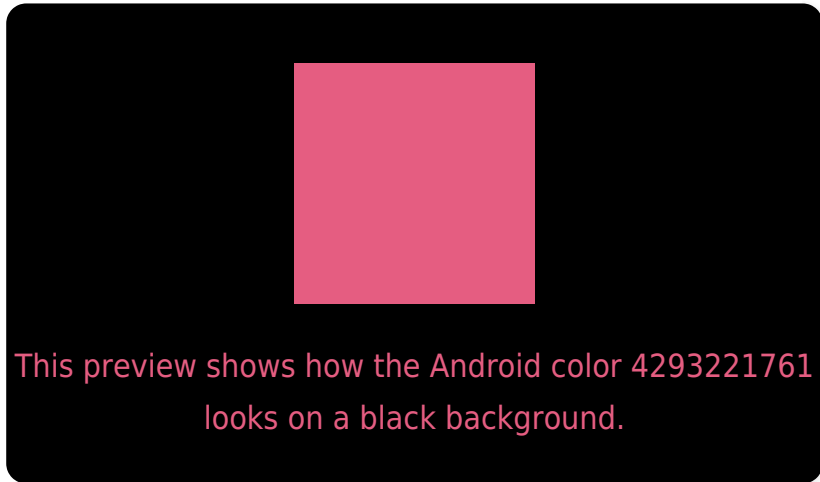
Large Text (above 18pt) WCAG AA ✓ Pass

Any Text WCAG AA ✗ Fail

Large Text (above 18pt) WCAG AAA ✗ Fail

Any Text WCAG AAA ✗ Fail

Black Background



Color Contrast Check

Large Text (above 18pt) WCAG AA ✓ Pass

Any Text WCAG AA ✓ Pass

Large Text (above 18pt) WCAG AAA ✓ Pass

Any Text WCAG AAA × Fail

If you want to check with other color combinations, try the [Color Contrast Checker](#).

Android 4293221761 Background



This preview shows how black text looks on a background with the Android color 4293221761.



This preview shows how white text looks on a background with the Android color 4293221761.

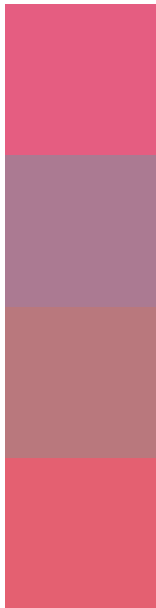
Color Blindness Simulation

Color vision deficiency is a very complex topic, and I could not describe the different causes any better than Wikipedia does, so if you want to learn more, you should check out their [article about color blindness](#).

Dichromacy



Trichromacy



Original Color
4293221761

Protanomaly
4289428114

Deuteranomaly
4290345085

Tritanomaly
4293156977

Monochromacy



Original Color
4293221761

Achromatopsia
4287269514

Achromatomaly
4289428103

CSS Examples

Text

The CSS property to change the color of the text to Android 4293221761 is called "color". The color property can be set on classes, ids or directly on the HTML element.

This example shows how text in the color `rgb(229, 93, 129)` looks like.

```
.text, #text, p{  
    color:rgb(229, 93, 129)  
}
```

If you want to add a text shadow in that color use the text-shadow property, you can generate a text shadow directly with our [CSS Text Shadow Generator](#).

Here you see how black text with a 4 pixel rgb(229, 93, 129) colored shadow looks like.

```
.shadow{ text-shadow: 4px 4px 2px rgb(229, 93, 129) }
```

Border

The CSS property to change the border of an element to Android 4293221761 is called "border". The border property can be set on classes, ids or directly on the HTML element.

This example shows the color as border, it can be applied via the CSS property "border" or "border-color".

```
.border, #border, table{ border:4px solid rgb(229, 93, 129) }
```

If only the border color should be changed use the property `border-color`.

```
.border{ border-color:rgb(229, 93, 129) }
```

If you want to add a box shadow in that color use:

Here you see how a box with a 4 pixel `rgb(229, 93, 129)` colored shadow looks like.

```
.boxshadow{ -moz-box-shadow:4px 4px 4px  
4px rgb(229, 93, 129); -webkit-box-  
shadow:4px 4px 4px 4px rgb(229, 93, 129);  
box-shadow:4px 4px 4px 4px rgb(229, 93,  
129) }
```

Background

The CSS property to change the background color of an element to Android 4293221761 is called "background". The background property can be set on classes, ids or directly on the HTML element.

```
.background, #background, body{  
background: rgb(229, 93, 129) }
```

If only the background color should be changed can be used:

```
.background{ background-color: rgb(229, 93,  
129) }
```

This example shows the color as background, it is applied via the CSS property "background".

To optimize and compress your CSS code, you can use our [online CSS compressor and optimizer](#) based on csstidy. If you want to create a linear or radial gradient as background or border, check our [CSS Gradient Generator](#).

Hey! You found this booklet interesting? Support Converting Colors with the new Membership Option!

The pro membership hides all ads, plus gives you double the colors in the color bucket, and more awesome pro features!

[Learn more, Memberships starting at \\$2.50/m!](#)

**Follow me
on Twitter!**

@ConvertingColor