

# Converting Colors

Android(4293227682)

Have a look what the booklet for  
Android(4293227682) contains.

<b>Android(4293227682)</b> .....	3
<i><b>Conversions</b></i> .....	4
<i><b>Details</b></i> .....	6
<i><b>Harmonies</b></i> .....	11
<i><b>Previews</b></i> .....	23
<i><b>Color Blindness Simulation</b></i> .....	26
<i><b>CSS Examples</b></i> .....	29

# **Color**

**Android(4293227682)**

# Conversions

## Conversions Part 1

<b>Format</b>	<b>Color</b>
Hex	E574A2
RGB	229, 116, 162
RGB Percent	90%, 45%, 64%
CMY	0.1020, 0.5451, 0.3647
CMYK	0.00, 0.49, 0.29, 0.10
HSL	336°, 68%, 68%
HSV	336°, 49%, 90%
XYZ	45.0801, 31.7574, 37.9362
YIQ	155.0310, 52.5820, 38.2620

# Conversions

## Conversions Part 2

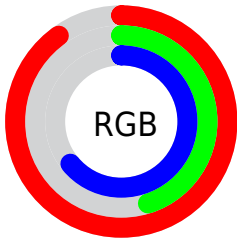
<b>Format</b>	<b>Color</b>
<b>R<sub>YB</sub></b>	229, 116, 162
Decimal	15037602
CIE <sub>Lab</sub>	63.14, 48.80, -4.28
CIE <sub>LCh</sub>	63, 48.987, 354.986
Yxy	31.7574, 0.3928, 0.2767
Android (android.graphics.Color)	4293227682 (0xFFE574A2)
YUV	155.0310, 3.4357, 64.8708
Hunter-Lab	56.3537, 44.1718, -0.4653

# Details

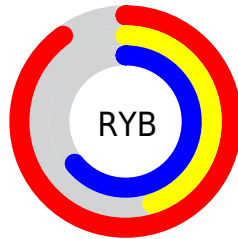
The Android color `4293227682` is a light color, and the websafe version is hex `CC6699`. A complement of this color would be `4285851063`, and the grayscale version is `4288387995`.

A 20% lighter version of the original color is `4294945753`, and `4289412974` is the 20% darker color. If you saturate the color by 10%, you get `4293221780`, and if you desaturate by 10%, it is `4293233584`.

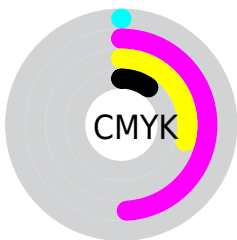
# Distribution



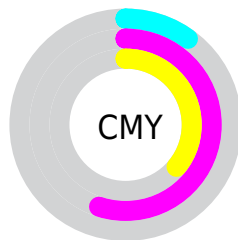
- Red (90%)
- Green (45%)
- Blue (64%)



- Red (90%)
- Yellow (45%)
- Blue (64%)



- Cyan (0%)
- Magenta (49%)
- Yellow (29%)
- Black (10%)



- Cyan (10%)
- Magenta (55%)
- Yellow (36%)

# Brightness & Saturation Gradients

These gradients show how the Android color 4293227682 changes by changing the brightness by 10 percent. The first figure shows a shift by +10% for each color and the second figure -10%.

Similar to the brightness gradients but the following saturation gradients show a change of the Android color 4293227682 by changing the saturation by 10% instead.



 4293227682

 4293227682

4294967295

 4291320200

 4294945753

 4289412974

 4294952949

 4287504982

 4294960383

 4285661247

 4283891753

 4282187797

 4280352769

 4278190080

 4293227682

 4293227682

 4293221780

 4293233584

 4293215879

 4293239485

 4293209977

 4293245387

 4293204076

 4293251288

 4293198174

 4293256934

 4293197917

 4293262835

 4293263359

# Harmonies

## Analogous

The Analogous color harmony consists of three colors that are next to each other on the color wheel.



4291329995



4293227682



4293490294

# Triad

The Triadic color harmony groups three colors that are evenly spaced from another and form a triangle on the color wheel.



4293227682



4287537478



4278233823

# Complementary

The Complementary color scheme is a pair of colors which are on the opposite of each other on the color wheel.



4293227682



4285851063

# Split Complementary

Split-complementary colors differ from the complementary color scheme. The scheme consists of three colors, the original color and two neighbors of the complement color.



4278234812



4293227682



4284000869

# Square

The Square scheme is like the rectangle color scheme, but the four colors are evenly spaced on the color wheel.



4293227682



4290286655



4278234768



4280918255

# Rectangle

The Rectangle color scheme consists of four colors that form a rectangle on the color wheel.



4293227682



4292902749



4278234768



4278234325



# Sweetspot

The Sweet Spot groups the original color and five complimentary colors.



4293227682



4294957544



4290147557



4286605682



4278190080



4286611584



# Same Dimension

The Same Dimension uses a secret algorithm to generate beautiful new colors.



4293227682



4294928806



4293229940



4285753196



4289921097



4281532437



# Inverse Universe

The Inverse Universe completely reimagines the original color for something new.



4293227682



4294928806



4285848805



4285753196



4289921097



4281532437



# Previews

## White Background



This preview shows how the Android color 4293227682 looks on a white background.

## Color Contrast Check

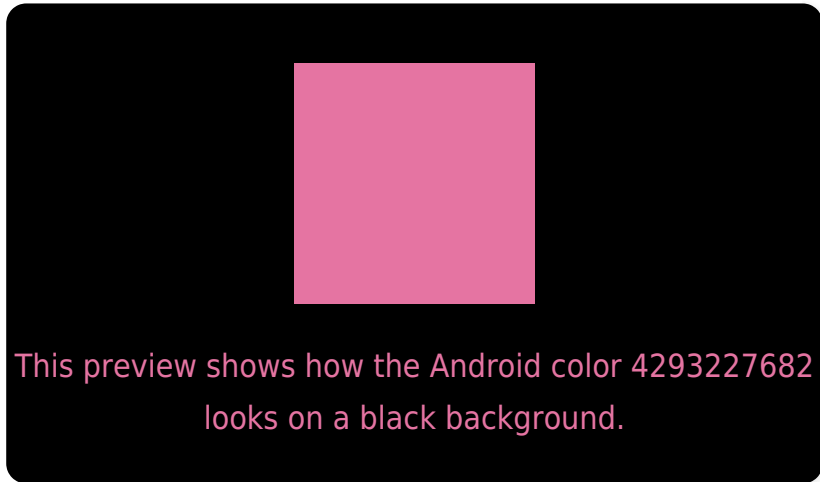
Large Text (above 18pt) WCAG AA × Fail

Any Text WCAG AA × Fail

Large Text (above 18pt) WCAG AAA × Fail

Any Text WCAG AAA × Fail

# Black Background



## Color Contrast Check

Large Text (above 18pt) WCAG AA ✓ Pass

Any Text WCAG AA ✓ Pass

Large Text (above 18pt) WCAG AAA ✓ Pass

Any Text WCAG AAA ✓ Pass

If you want to check with other color combinations, try the [Color Contrast Checker](#).



# Android 4293227682 Background



This preview shows how black text looks on a background with the Android color 4293227682.



This preview shows how white text looks on a background with the Android color 4293227682.

# Color Blindness Simulation

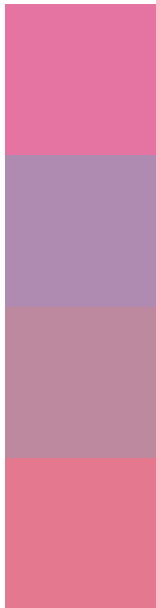
Color vision deficiency is a very complex topic, and I could not describe the different causes any better than Wikipedia does, so if you want to learn more, you should check out their [article about color blindness](#).

## Dichromacy





# Trichromacy



**Original Color**  
4293227682

**Protanomaly**  
4289760177

**Deuteranomaly**  
4290611615

**Tritanomaly**  
4293097614

# Monochromacy



**Original Color**  
4293227682

**Achromatopsia**  
4288387995

**Achromatomaly**  
4290153886

# CSS Examples

## Text

The CSS property to change the color of the text to Android 4293227682 is called "color". The color property can be set on classes, ids or directly on the HTML element.

This example shows how text in the color `rgb(229, 116, 162)` looks like.

```
.text, #text, p{  
    color:rgb(229, 116, 162)  
}
```

If you want to add a text shadow in that color use the text-shadow property, you can generate a text shadow directly with our [CSS Text Shadow Generator](#).

Here you see how black text with a 4 pixel rgb(229, 116, 162) colored shadow looks like.

```
.shadow{ text-shadow: 4px 4px 2px rgb(229, 116, 162) }
```

## Border

The CSS property to change the border of an element to Android 4293227682 is called "border". The border property can be set on classes, ids or directly on the HTML element.

This example shows the color as border, it can be applied via the CSS property "border" or "border-color".

```
.border, #border, table{ border:4px solid rgb(229, 116, 162) }
```

If only the border color should be changed use the property `border-color`.

```
.border{ border-color:rgb(229, 116, 162) }
```

If you want to add a box shadow in that color use:

Here you see how a box with a 4 pixel `rgb(229, 116, 162)` colored shadow looks like.

```
.boxshadow{ -moz-box-shadow:4px 4px 4px  
4px rgb(229, 116, 162); -webkit-box-  
shadow:4px 4px 4px 4px rgb(229, 116, 162);  
box-shadow:4px 4px 4px 4px rgb(229, 116,  
162) }
```

# Background

The CSS property to change the background color of an element to Android 4293227682 is called "background". The background property can be set on classes, ids or directly on the HTML element.

```
.background, #background, body{  
background: rgb(229, 116, 162) }
```

If only the background color should be changed can be used:

```
.background{ background-color: rgb(229,  
116, 162) }
```

This example shows the color as background, it is applied via the CSS property "background".

To optimize and compress your CSS code, you can use our [online CSS compressor and optimizer](#) based on csstidy. If you want to create a linear or radial gradient as background or border, check our [CSS Gradient Generator](#).



Hey! You found this booklet interesting? Support Converting Colors with the new Membership Option!

The pro membership hides all ads, plus gives you double the colors in the color bucket, and more awesome pro features!

**[Learn more, Memberships starting at \\$2.50/m!](#)**

**Follow me  
on Twitter!**

@ConvertingColor