

# Converting Colors

Android(4293228945)

Have a look what the booklet for  
Android(4293228945) contains.

<b>Android(4293228945)</b> .....	3
<b><i>Conversions</i></b> .....	4
<b><i>Details</i></b> .....	6
<b><i>Harmonies</i></b> .....	11
<b><i>Previews</i></b> .....	23
<b><i>Color Blindness Simulation</i></b> .....	26
<b><i>CSS Examples</i></b> .....	29

# **Color**

**Android(4293228945)**

# Conversions

## Conversions Part 1

<b>Format</b>	<b>Color</b>
Hex	E57991
RGB	229, 121, 145
RGB Percent	90%, 47%, 57%
CMY	0.1020, 0.5255, 0.4314
CMYK	0.00, 0.47, 0.37, 0.10
HSL	347°, 68%, 69%
HSV	347°, 47%, 90%
XYZ	44.2613, 32.3771, 30.7046
YIQ	156.0280, 56.6640, 30.3600

# Conversions

## Conversions Part 2

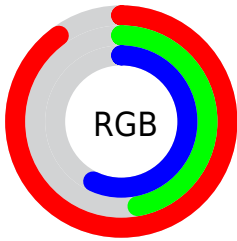
<b>Format</b>	<b>Color</b>
<a href="#">RYB</a>	<a href="#">229, 121, 145</a>
Decimal	<a href="#">15038865</a>
CIELab	<a href="#">63.65, 44.22, 6.18</a>
CIElCh	<a href="#">64, 44.650, 7.956</a>
Yxy	<a href="#">32.3771, 0.4123, 0.3016</a>
Android (android.graphics.Color)	<a href="#">4293228945 (0xFFE57991)</a>
YUV	<a href="#">156.0280, -5.4368, 63.9964</a>
Hunter-Lab	<a href="#">56.9009, 39.2727, 7.8368</a>

# Details

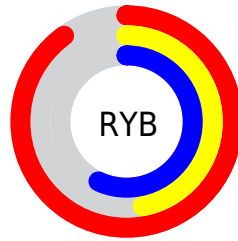
The Android color `4293228945` is a light color, and the websafe version is hex `CC6666`. A complement of this color would be `4286178765`, and the grayscale version is `4288453788`.

A 20% lighter version of the original color is `4294947015`, and `4289348703` is the 20% darker color. If you saturate the color by 10%, you get `4293223039`, and if you desaturate by 10%, it is `4293234851`.

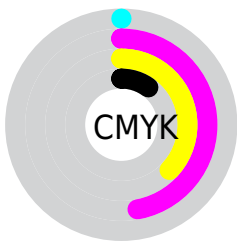
# Distribution



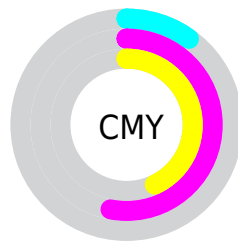
- Red (90%)
- Green (47%)
- Blue (57%)



- Red (90%)
- Yellow (47%)
- Blue (57%)



- Cyan (0%)
- Magenta (47%)
- Yellow (37%)
- Black (10%)



- Cyan (10%)
- Magenta (53%)
- Yellow (43%)

# Brightness & Saturation Gradients

These gradients show how the Android color 4293228945 changes by changing the brightness by 10 percent. The first figure shows a shift by +10% for each color and the second figure -10%.

Similar to the brightness gradients but the following saturation gradients show a change of the Android color 4293228945 by changing the saturation by 10% instead.





4293228945



4293228945

4294967295



4291256183



4294947015



4289348703



4294954211



4287507015



4294961407



4285663793



4283826204



4282187777



4280221697



4278190080



4293228945



4293228945

 4293223039

 4293234851

 4293217133

 4293240757

 4293211228

 4293246662

 4293205322

 4293252568

 4293199416

 4293258474

 4293197875

 4293263356

 4293263359

# Harmonies

## Analogous

The Analogous color harmony consists of three colors that are next to each other on the color wheel.



4292116153



4293228945



4292903019

# Triad

The Triadic color harmony groups three colors that are evenly spaced from another and form a triangle on the color wheel.



4293228945



4286424665



4278232803

# Complementary

The Complementary color scheme is a pair of colors which are on the opposite of each other on the color wheel.



4293228945



4286178765

# Split Complementary

Split-complementary colors differ from the complementary color scheme. The scheme consists of three colors, the original color and two neighbors of the complement color.



4278234570



4293228945



4282821755

# Square

The Square scheme is like the rectangle color scheme, but the four colors are evenly spaced on the color wheel.



4293228945



4289239881



4278235044



4285242345

# Rectangle

The Rectangle color scheme consists of four colors that form a rectangle on the color wheel.



4293228945



4292053336



4278235044



4278233565



# Sweetspot

The Sweet Spot groups the original color and five complimentary colors.



4293228945



4294958051



4291590629



4286605935



4278190080



4286611584



# Same Dimension

The Same Dimension uses a secret algorithm to generate beautiful new colors.



4293228945



4294930062



4293236345



4285753194



4289921064



4281532427



# Inverse Universe

The Inverse Universe completely reimagines the original color for something new.



4293228945



4294930062



4286171365



4285753194



4289921064



4281532427



# Previews

## White Background



This preview shows how the Android color 4293228945 looks on a white background.

## Color Contrast Check

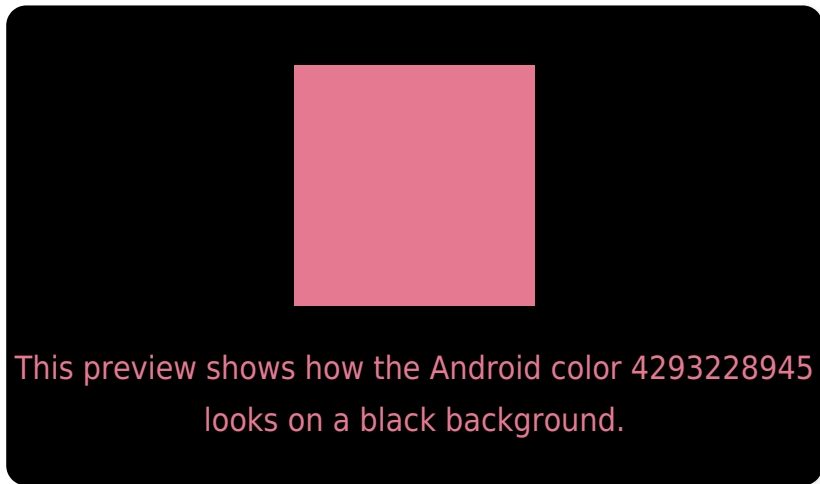
Large Text (above 18pt) WCAG AA × Fail

Any Text WCAG AA × Fail

Large Text (above 18pt) WCAG AAA × Fail

Any Text WCAG AAA × Fail

# Black Background



## Color Contrast Check

Large Text (above 18pt) WCAG AA ✓ Pass

Any Text WCAG AA ✓ Pass

Large Text (above 18pt) WCAG AAA ✓ Pass

Any Text WCAG AAA ✓ Pass

If you want to check with other color combinations, try the [Color Contrast Checker](#).



# Android 4293228945 Background



This preview shows how black text looks on a background with the Android color 4293228945.

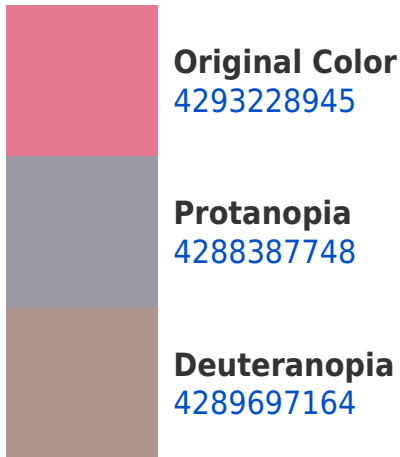



This preview shows how white text looks on a background with the Android color 4293228945.

# Color Blindness Simulation

Color vision deficiency is a very complex topic, and I could not describe the different causes any better than Wikipedia does, so if you want to learn more, you should check out their [article about color blindness](#).

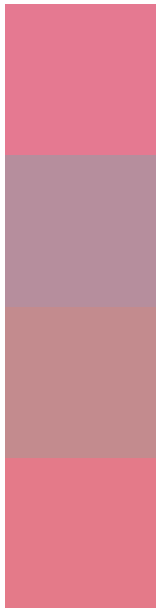
## Dichromacy





**Tritanopia**  
4293163908

# Trichromacy



**Original Color**  
4293228945

**Protanomaly**  
4290154141

**Deuteranomaly**  
4291005326

**Tritanomaly**  
4293163657

# Monochromacy



**Original Color**  
4293228945

**Achromatopsia**  
4288453788

**Achromatomaly**  
4290219928

# CSS Examples

## Text

The CSS property to change the color of the text to Android 4293228945 is called "color". The color property can be set on classes, ids or directly on the HTML element.

This example shows how text in the color `rgb(229, 121, 145)` looks like.

```
.text, #text, p{  
    color:rgb(229, 121, 145)  
}
```

If you want to add a text shadow in that color use the text-shadow property, you can generate a text shadow directly with our [CSS Text Shadow Generator](#).

Here you see how black text with a 4 pixel rgb(229, 121, 145) colored shadow looks like.

```
.shadow{ text-shadow: 4px 4px 2px rgb(229, 121, 145) }
```

## Border

The CSS property to change the border of an element to Android 4293228945 is called "border". The border property can be set on classes, ids or directly on the HTML element.

This example shows the color as border, it can be applied via the CSS property "border" or "border-color".

```
.border, #border, table{ border:4px solid rgb(229, 121, 145) }
```

If only the border color should be changed use the property `border-color`.

```
.border{ border-color:rgb(229, 121, 145) }
```

If you want to add a box shadow in that color use:

Here you see how a box with a 4 pixel `rgb(229, 121, 145)` colored shadow looks like.

```
.boxshadow{ -moz-box-shadow:4px 4px 4px  
4px rgb(229, 121, 145); -webkit-box-  
shadow:4px 4px 4px 4px rgb(229, 121, 145);  
box-shadow:4px 4px 4px 4px rgb(229, 121,  
145) }
```

# Background

The CSS property to change the background color of an element to Android 4293228945 is called "background". The background property can be set on classes, ids or directly on the HTML element.

```
.background, #background, body{  
background: rgb(229, 121, 145) }
```

If only the background color should be changed can be used:

```
.background{ background-color: rgb(229,  
121, 145) }
```

This example shows the color as background, it is applied via the CSS property "background".

To optimize and compress your CSS code, you can use our [online CSS compressor and optimizer](#) based on csstidy. If you want to create a linear or radial gradient as background or border, check our [CSS Gradient Generator](#).



Hey! You found this booklet interesting? Support Converting Colors with the new Membership Option!

The pro membership hides all ads, plus gives you double the colors in the color bucket, and more awesome pro features!

**[Learn more, Memberships starting at \\$2.50/m!](#)**

**Follow me  
on Twitter!**

@ConvertingColor