

Converting Colors

Android(4293237927)

Have a look what the booklet for
Android(4293237927) contains.

Android(4293237927)	3
<i>Conversions</i>	4
<i>Details</i>	6
<i>Harmonies</i>	11
<i>Previews</i>	23
<i>Color Blindness Simulation</i>	26
<i>CSS Examples</i>	29

Color

Android(4293237927)

Conversions

Conversions Part 1

Format	Color
Hex	E59CA7
RGB	229, 156, 167
RGB Percent	90%, 61%, 65%
CMY	0.1020, 0.3882, 0.3451
CMYK	0.00, 0.32, 0.27, 0.10
HSL	351°, 58%, 75%
HSV	351°, 32%, 90%
XYZ	51.1766, 43.2250, 42.2052
YIQ	179.0810, 39.9770, 18.8970

Conversions

Conversions Part 2

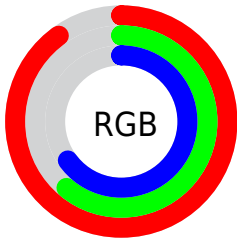
Format	Color
R _Y B	229, 156, 167
Decimal	15047847
CIE Lab	71.71, 28.72, 5.39
CIE LCh	72, 29.222, 10.638
Yxy	43.2250, 0.3746, 0.3164
Android (android.graphics.Color)	4293237927 (0xFFE59CA7)
YUV	179.0810, -5.9559, 43.7790
Hunter-Lab	65.7457, 23.8899, 7.9610

Details

The Android color `4293237927` is a light color, and the websafe version is hex `CC9999`. A complement of this color would be `4288472538`, and the grayscale version is `4289967027`.

A 20% lighter version of the original color is `4294955998`, and `4289489011` is the 20% darker color. If you saturate the color by 10%, you get `4293232020`, and if you desaturate by 10%, it is `4293243834`.

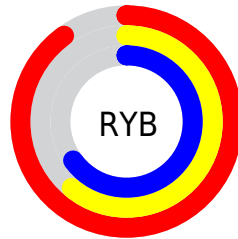
Distribution



Red (90%)

Green (61%)

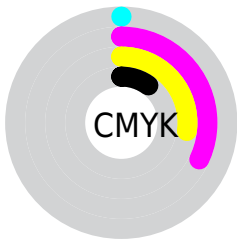
Blue (65%)



Red (90%)

Yellow (61%)

Blue (65%)

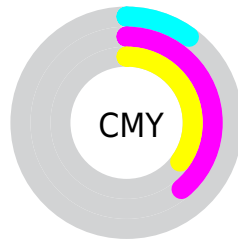


Cyan (0%)

Magenta (32%)

Yellow (27%)

Black (10%)



Cyan (10%)

Magenta (39%)

Yellow (35%)

Brightness & Saturation Gradients

These gradients show how the Android color 4293237927 changes by changing the brightness by 10 percent. The first figure shows a shift by +10% for each color and the second figure -10%.

Similar to the brightness gradients but the following saturation gradients show a change of the Android color 4293237927 by changing the saturation by 10% instead.

 4293237927

 4293237927

4294967295

 4291330701

 4294955998

 4289489011

 4294963451

 4287647579

 4285871939

 4284162093

 4282517273

 4281073664

 4278190080

 4293237927

 4293237927

 4293232020

 4293243834

 4293226112

 4293249742

 4293220205

 4293255649

 4293214297

 4293261557

 4293208646

 4293263359

 4293202738

 4293197859

Harmonies

Analogous

The Analogous color harmony consists of three colors that are next to each other on the color wheel.



4292452034



4293237927



4293042318

Triad

The Triadic color harmony groups three colors that are evenly spaced from another and form a triangle on the color wheel.



4293237927



4288395399



4285904865

Complementary

The Complementary color scheme is a pair of colors which are on the opposite of each other on the color wheel.



4293237927



4288472538

Split Complementary

Split-complementary colors differ from the complementary color scheme. The scheme consists of three colors, the original color and two neighbors of the complement color.



4284399057



4293237927



4286430621

Square

The Square scheme is like the rectangle color scheme, but the four colors are evenly spaced on the color wheel.



4293237927



4290359675



4284727225



4288393188

Rectangle

The Rectangle color scheme consists of four colors that form a rectangle on the color wheel.



4293237927



4292388226



4284727225



4285250013

Sweetspot

The Sweet Spot groups the original color and five complimentary colors.



4293237927



4294960873



4292451557



4286607475



4278190080



4286611584

Same Dimension

The Same Dimension uses a secret algorithm to generate beautiful new colors.



4293237927



4294942381



4293244060



4285753193



4289921051



4281532424

Inverse Universe

The Inverse Universe completely reimagines the original color for something new.



4293237927



4294942381



4288466405



4285753193



4289921051



4281532424

Previews

White Background



This preview shows how the Android color 4293237927 looks on a white background.

Color Contrast Check

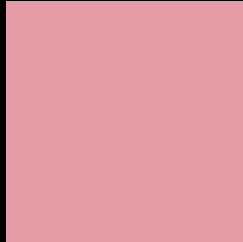
Large Text (above 18pt) WCAG AA × Fail

Any Text WCAG AA × Fail

Large Text (above 18pt) WCAG AAA × Fail

Any Text WCAG AAA × Fail

Black Background



This preview shows how the Android color 4293237927 looks on a black background.

Color Contrast Check

Large Text (above 18pt) WCAG AA ✓ Pass

Any Text WCAG AA ✓ Pass

Large Text (above 18pt) WCAG AAA ✓ Pass

Any Text WCAG AAA ✓ Pass

If you want to check with other color combinations, try the [Color Contrast Checker](#).

Android 4293237927 Background



This preview shows how black text looks on a background with the Android color 4293237927.




This preview shows how white text looks on a background with the Android color 4293237927.

Color Blindness Simulation

Color vision deficiency is a very complex topic, and I could not describe the different causes any better than Wikipedia does, so if you want to learn more, you should check out their [article about color blindness](#).

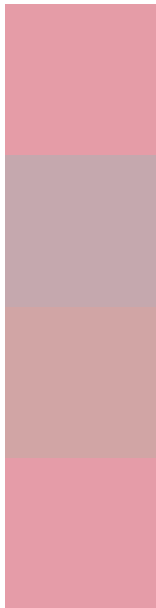
Dichromacy





Tritanopia
4293237928

Trichromacy



Original Color
4293237927

Protanomaly
4291143854

Deuteranomaly
4291929509

Tritanomaly
4293237928

Monochromacy



Original Color
4293237927

Achromatopsia
4289967027

Achromatomaly
4291144623

CSS Examples

Text

The CSS property to change the color of the text to Android 4293237927 is called "color". The color property can be set on classes, ids or directly on the HTML element.

This example shows how text in the color `rgb(229, 156, 167)` looks like.

```
.text, #text, p{  
    color:rgb(229, 156, 167)  
}
```

If you want to add a text shadow in that color use the text-shadow property, you can generate a text shadow directly with our [CSS Text Shadow Generator](#).

Here you see how black text with a 4 pixel rgb(229, 156, 167) colored shadow looks like.

```
.shadow{ text-shadow: 4px 4px 2px rgb(229, 156, 167) }
```

Border

The CSS property to change the border of an element to Android 4293237927 is called "border". The border property can be set on classes, ids or directly on the HTML element.

This example shows the color as border, it can be applied via the CSS property "border" or "border-color".

```
.border, #border, table{ border:4px solid rgb(229, 156, 167) }
```

If only the border color should be changed use the property `border-color`.

```
.border{ border-color:rgb(229, 156, 167) }
```

If you want to add a box shadow in that color use:

Here you see how a box with a 4 pixel `rgb(229, 156, 167)` colored shadow looks like.

```
.boxshadow{ -moz-box-shadow:4px 4px 4px  
4px rgb(229, 156, 167); -webkit-box-  
shadow:4px 4px 4px 4px rgb(229, 156, 167);  
box-shadow:4px 4px 4px 4px rgb(229, 156,  
167) }
```

Background

The CSS property to change the background color of an element to Android 4293237927 is called "background". The background property can be set on classes, ids or directly on the HTML element.

```
.background, #background, body{  
background: rgb(229, 156, 167) }
```

If only the background color should be changed can be used:

```
.background{ background-color: rgb(229,  
156, 167) }
```

This example shows the color as background, it is applied via the CSS property "background".

To optimize and compress your CSS code, you can use our [online CSS compressor and optimizer](#) based on csstidy. If you want to create a linear or radial gradient as background or border, check our [CSS Gradient Generator](#).

Hey! You found this booklet interesting? Support Converting Colors with the new Membership Option!

The pro membership hides all ads, plus gives you double the colors in the color bucket, and more awesome pro features!

[Learn more, Memberships starting at \\$2.50/m!](#)

**Follow me
on Twitter!**

@ConvertingColor