

Converting Colors

Android(4293239228)

Have a look what the booklet for
Android(4293239228) contains.

Android(4293239228)	3
<i>Conversions</i>	4
<i>Details</i>	6
<i>Harmonies</i>	11
<i>Previews</i>	23
<i>Color Blindness Simulation</i>	26
<i>CSS Examples</i>	29

Color

Android(4293239228)

Conversions

Conversions Part 1

Format	Color
Hex	E5A1BC
RGB	229, 161, 188
RGB Percent	90%, 63%, 74%
CMY	0.1020, 0.3686, 0.2627
CMYK	0.00, 0.30, 0.18, 0.10
HSL	336°, 57%, 76%
HSV	336°, 30%, 90%
XYZ	54.1351, 45.7786, 53.5599
YIQ	184.4100, 31.8610, 22.8130

Conversions

Conversions Part 2

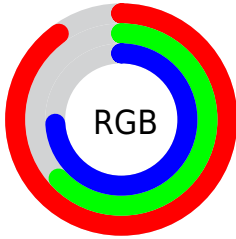
Format	Color
R _Y B	229, 161, 188
Decimal	15049148
CIE Lab	73.40, 29.11, -3.74
CIE LCh	73, 29.348, 352.683
Yxy	45.7786, 0.3527, 0.2983
Android (android.graphics.Color)	4293239228 (0xFFE5A1BC)
YUV	184.4100, 1.7699, 39.1054
Hunter-Lab	67.6599, 24.4141, 0.4277

Details

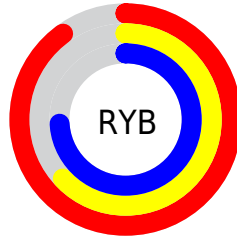
The Android color `4293239228` is a light color, and the websafe version is hex `CC99CC`. A complement of this color would be `4288800202`, and the grayscale version is `4290295992`.

A 20% lighter version of the original color is `4294957300`, and `4289490311` is the 20% darker color. If you saturate the color by 10%, you get `4293233326`, and if you desaturate by 10%, it is `4293245130`.

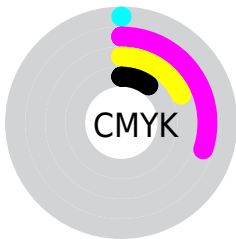
Distribution



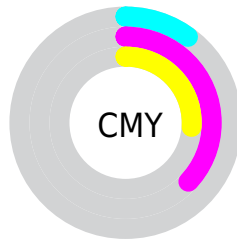
- Red (90%)
- Green (63%)
- Blue (74%)



- Red (90%)
- Yellow (63%)
- Blue (74%)



- Cyan (0%)
- Magenta (30%)
- Yellow (18%)
- Black (10%)



- Cyan (10%)
- Magenta (37%)
- Yellow (26%)

Brightness & Saturation Gradients

These gradients show how the Android color 4293239228 changes by changing the brightness by 10 percent. The first figure shows a shift by +10% for each color and the second figure -10%.

Similar to the brightness gradients but the following saturation gradients show a change of the Android color 4293239228 by changing the saturation by 10% instead.



4293239228



4293239228

4294967295



4291331745



4294957300



4289490311



4294964735



4287714414



4286004053



4284294206



4282649640



4281139220



4278321152



4278190080

 4293239228

 4293239228

 4293233326

 4293245130

 4293227424

 4293251032

 4293221523

 4293256933

 4293215621

 4293262835

 4293209975

 4293263359

 4293204073

 4293198171

 4293197915

Harmonies

Analogous

The Analogous color harmony consists of three colors that are next to each other on the color wheel.



4291864533



4293239228



4293632417

Triad

The Triadic color harmony groups three colors that are evenly spaced from another and form a triangle on the color wheel.



4293239228



4289902978



4285120734

Complementary

The Complementary color scheme is a pair of colors which are on the opposite of each other on the color wheel.



4293239228



4288800202

Split Complementary

Split-complementary colors differ from the complementary color scheme. The scheme consists of three colors, the original color and two neighbors of the complement color.



4284662728



4293239228



4287872915

Square

The Square scheme is like the rectangle color scheme, but the four colors are evenly spaced on the color wheel.



4293239228



4291735679



4285907885



4287150569

Rectangle

The Rectangle color scheme consists of four colors that form a rectangle on the color wheel.



4293239228



4293305745



4285907885



4284727768

Sweetspot

The Sweet Spot groups the original color and five complimentary colors.



4293239228



4294961393



4291469797



4286607735



4278190080



4286611584

Same Dimension

The Same Dimension uses a secret algorithm to generate beautiful new colors.



4293239228



4294943688



4293240993



4285753196



4289921095



4281532436

Inverse Universe

The Inverse Universe completely reimagines the original color for something new.



4293239228



4294943688



4288798437



4285753196



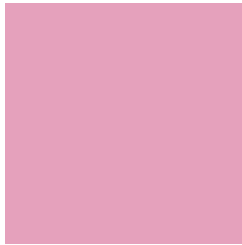
4289921095



4281532436

Previews

White Background



This preview shows how the Android color 4293239228 looks on a white background.

Color Contrast Check

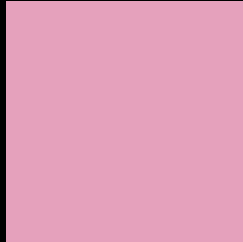
Large Text (above 18pt) WCAG AA × Fail

Any Text WCAG AA × Fail

Large Text (above 18pt) WCAG AAA × Fail

Any Text WCAG AAA × Fail

Black Background



This preview shows how the Android color 4293239228 looks on a black background.

Color Contrast Check

Large Text (above 18pt) WCAG AA ✓ Pass

Any Text WCAG AA ✓ Pass

Large Text (above 18pt) WCAG AAA ✓ Pass

Any Text WCAG AAA ✓ Pass

If you want to check with other color combinations, try the [Color Contrast Checker](#).

Android 4293239228 Background



This preview shows how black text looks on a background with the Android color 4293239228.



This preview shows how white text looks on a background with the Android color 4293239228.

Color Blindness Simulation

Color vision deficiency is a very complex topic, and I could not describe the different causes any better than Wikipedia does, so if you want to learn more, you should check out their [article about color blindness](#).

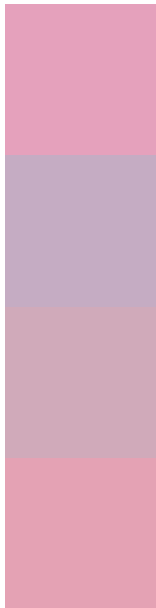
Dichromacy





Tritanopia
4293174192

Trichromacy



Original Color
4293239228

Protanomaly
4291144899

Deuteranomaly
4291865274

Tritanomaly
4293173940

Monochromacy



Original Color
4293239228

Achromatopsia
4290295992

Achromatomaly
4291342521

CSS Examples

Text

The CSS property to change the color of the text to Android 4293239228 is called "color". The color property can be set on classes, ids or directly on the HTML element.

This example shows how text in the color `rgb(229, 161, 188)` looks like.

```
.text, #text, p{  
    color:rgb(229, 161, 188)  
}
```

If you want to add a text shadow in that color use the text-shadow property, you can generate a text shadow directly with our [CSS Text Shadow Generator](#).

Here you see how black text with a 4 pixel rgb(229, 161, 188) colored shadow looks like.

```
.shadow{ text-shadow: 4px 4px 2px rgb(229, 161, 188) }
```

Border

The CSS property to change the border of an element to Android 4293239228 is called "border". The border property can be set on classes, ids or directly on the HTML element.

This example shows the color as border, it can be applied via the CSS property "border" or "border-color".

```
.border, #border, table{ border:4px solid rgb(229, 161, 188) }
```

If only the border color should be changed use the property `border-color`.

```
.border{ border-color:rgb(229, 161, 188) }
```

If you want to add a box shadow in that color use:

Here you see how a box with a 4 pixel `rgb(229, 161, 188)` colored shadow looks like.

```
.boxshadow{ -moz-box-shadow:4px 4px 4px 4px rgb(229, 161, 188); -webkit-box-shadow:4px 4px 4px 4px rgb(229, 161, 188); box-shadow:4px 4px 4px 4px rgb(229, 161, 188) }
```

Background

The CSS property to change the background color of an element to Android 4293239228 is called "background". The background property can be set on classes, ids or directly on the HTML element.

```
.background, #background, body{  
background: rgb(229, 161, 188) }
```

If only the background color should be changed can be used:

```
.background{ background-color: rgb(229,  
161, 188) }
```

This example shows the color as background, it is applied via the CSS property "background".

To optimize and compress your CSS code, you can use our [online CSS compressor and optimizer](#) based on csstidy. If you want to create a linear or radial gradient as background or border, check our [CSS Gradient Generator](#).

Hey! You found this booklet interesting? Support Converting Colors with the new Membership Option!

The pro membership hides all ads, plus gives you double the colors in the color bucket, and more awesome pro features!

[Learn more, Memberships starting at \\$2.50/m!](#)

**Follow me
on Twitter!**

@ConvertingColor