

Converting Colors

Android(4293239470)

Have a look what the booklet for
Android(4293239470) contains.

Android(4293239470)	3
<i>Conversions</i>	4
<i>Details</i>	6
<i>Harmonies</i>	11
<i>Previews</i>	23
<i>Color Blindness Simulation</i>	26
<i>CSS Examples</i>	29

Color

Android(4293239470)

Conversions

Conversions Part 1

Format	Color
Hex	E5A2AE
RGB	229, 162, 174
RGB Percent	90%, 64%, 68%
CMY	0.1020, 0.3647, 0.3176
CMYK	0.00, 0.29, 0.24, 0.10
HSL	349°, 56%, 77%
HSV	349°, 29%, 90%
XYZ	52.8734, 45.5547, 46.0506
YIQ	183.4010, 36.0800, 17.9360

Conversions

Conversions Part 2

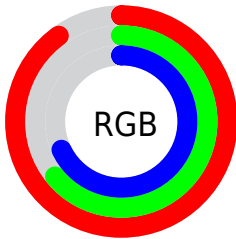
Format	Color
R _Y B	229, 162, 174
Decimal	15049390
CIE Lab	73.26, 26.49, 3.76
CIE LCh	73, 26.759, 8.085
Yxy	45.5547, 0.3660, 0.3153
Android (android.graphics.Color)	4293239470 (0xFFE5A2AE)
YUV	183.4010, -4.6347, 39.9903
Hunter-Lab	67.4942, 21.7180, 6.7930

Details

The Android color `4293239470` is a light color, and the websafe version is hex `CC9999`. A complement of this color would be `4288865753`, and the grayscale version is `4290230199`.

A 20% lighter version of the original color is `4294957541`, and `4289490554` is the 20% darker color. If you saturate the color by 10%, you get `4293233563`, and if you desaturate by 10%, it is `4293245377`.

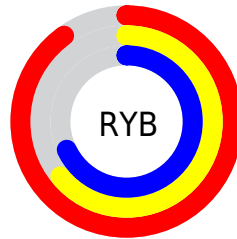
Distribution



Red (90%)

Green (64%)

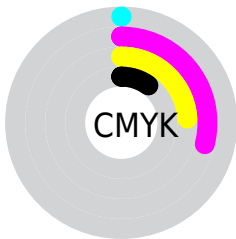
Blue (68%)



Red (90%)

Yellow (64%)

Blue (68%)

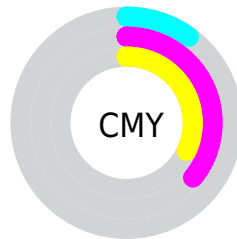


Cyan (0%)

Magenta (29%)

Yellow (24%)

Black (10%)



Cyan (10%)

Magenta (36%)

Yellow (32%)

Brightness & Saturation Gradients

These gradients show how the Android color 4293239470 changes by changing the brightness by 10 percent. The first figure shows a shift by +10% for each color and the second figure -10%.

Similar to the brightness gradients but the following saturation gradients show a change of the Android color 4293239470 by changing the saturation by 10% instead.

 4293239470

 4293239470

4294967295

 4291331987

 4294957541

 4289490554

 4294964991

 4287714657

 4285939017

 4284229171

 4282584606

 4281139204

 4278190080

 4293239470

 4293239470

 4293233563

 4293245377

 4293227656

 4293251284

 4293221750

 4293257190

 4293215843

 4293263097

 4293210192

 4293263359

 4293204285

 4293198378

 4293197865

Harmonies

Analogous

The Analogous color harmony consists of three colors that are next to each other on the color wheel.



4292453575



4293239470



4293109143

Triad

The Triadic color harmony groups three colors that are evenly spaced from another and form a triangle on the color wheel.



4293239470



4288986253



4286495713

Complementary

The Complementary color scheme is a pair of colors which are on the opposite of each other on the color wheel.



4293239470



4288865753

Split Complementary

Split-complementary colors differ from the complementary color scheme. The scheme consists of three colors, the original color and two neighbors of the complement color.



4285317329



4293239470



4287152289

Square

The Square scheme is like the rectangle color scheme, but the four colors are evenly spaced on the color wheel.



4293239470



4290753667



4285645498



4288656612

Rectangle

The Rectangle color scheme consists of four colors that form a rectangle on the color wheel.



4293239470



4292586123



4285645498



4285971933

Sweetspot

The Sweet Spot groups the original color and five complimentary colors.



4293239470



4294961388



4292453093



4286607732



4278190080



4286611584

Same Dimension

The Same Dimension uses a secret algorithm to generate beautiful new colors.



4293239470



4294944438



4293244834



4285753193



4289921056



4281532425

Inverse Universe

The Inverse Universe completely reimagines the original color for something new.



4293239470



4294944438



4288860389



4285753193



4289921056



4281532425

Previews

White Background



This preview shows how the Android color 4293239470 looks on a white background.

Color Contrast Check

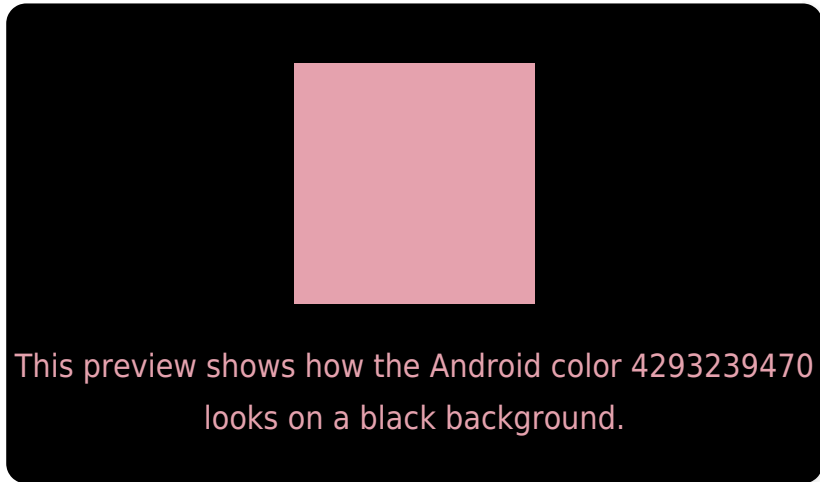
Large Text (above 18pt) WCAG AA × Fail

Any Text WCAG AA × Fail

Large Text (above 18pt) WCAG AAA × Fail

Any Text WCAG AAA × Fail

Black Background



Color Contrast Check

Large Text (above 18pt) WCAG AA ✓ Pass

Any Text WCAG AA ✓ Pass

Large Text (above 18pt) WCAG AAA ✓ Pass

Any Text WCAG AAA ✓ Pass

If you want to check with other color combinations, try the [Color Contrast Checker](#).

Android 4293239470 Background



This preview shows how black text looks on a background with the Android color 4293239470.




This preview shows how white text looks on a background with the Android color 4293239470.

Color Blindness Simulation

Color vision deficiency is a very complex topic, and I could not describe the different causes any better than Wikipedia does, so if you want to learn more, you should check out their [article about color blindness](#).

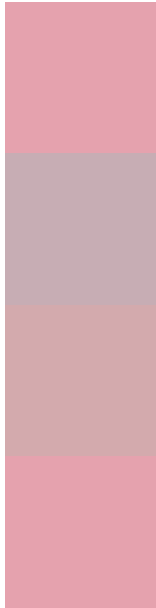
Dichromacy





Tritanopia
4293239470

Trichromacy



Original Color
4293239470

Protanomaly
4291276212

Deuteranomaly
4292061869

Tritanomaly
4293239470

Monochromacy



Original Color
4293239470

Achromatopsia
4290230199

Achromatomaly
4291342260

CSS Examples

Text

The CSS property to change the color of the text to Android 4293239470 is called "color". The color property can be set on classes, ids or directly on the HTML element.

This example shows how text in the color `rgb(229, 162, 174)` looks like.

```
.text, #text, p{  
    color:rgb(229, 162, 174)  
}
```

If you want to add a text shadow in that color use the text-shadow property, you can generate a text shadow directly with our [CSS Text Shadow Generator](#).

Here you see how black text with a 4 pixel rgb(229, 162, 174) colored shadow looks like.

```
.shadow{ text-shadow: 4px 4px 2px rgb(229, 162, 174) }
```

Border

The CSS property to change the border of an element to Android 4293239470 is called "border". The border property can be set on classes, ids or directly on the HTML element.

This example shows the color as border, it can be applied via the CSS property "border" or "border-color".

```
.border, #border, table{ border:4px solid rgb(229, 162, 174) }
```

If only the border color should be changed use the property `border-color`.

```
.border{ border-color:rgb(229, 162, 174) }
```

If you want to add a box shadow in that color use:

Here you see how a box with a 4 pixel `rgb(229, 162, 174)` colored shadow looks like.

```
.boxshadow{ -moz-box-shadow:4px 4px 4px 4px rgb(229, 162, 174); -webkit-box-shadow:4px 4px 4px 4px rgb(229, 162, 174); box-shadow:4px 4px 4px 4px rgb(229, 162, 174) }
```

Background

The CSS property to change the background color of an element to Android 4293239470 is called "background". The background property can be set on classes, ids or directly on the HTML element.

```
.background, #background, body{  
background: rgb(229, 162, 174) }
```

If only the background color should be changed can be used:

```
.background{ background-color: rgb(229,  
162, 174) }
```

This example shows the color as background, it is applied via the CSS property "background".

To optimize and compress your CSS code, you can use our [online CSS compressor and optimizer](#) based on csstidy. If you want to create a linear or radial gradient as background or border, check our [CSS Gradient Generator](#).

Hey! You found this booklet interesting? Support Converting Colors with the new Membership Option!

The pro membership hides all ads, plus gives you double the colors in the color bucket, and more awesome pro features!

[Learn more, Memberships starting at \\$2.50/m!](#)

**Follow me
on Twitter!**

@ConvertingColor