

Converting Colors

Android(4293245345)

Have a look what the booklet for
Android(4293245345) contains.

Android(4293245345)	3
<i>Conversions</i>	4
<i>Details</i>	6
<i>Harmonies</i>	11
<i>Previews</i>	23
<i>Color Blindness Simulation</i>	26
<i>CSS Examples</i>	29

Color

Android(4293245345)

Conversions

Conversions Part 1

Format	Color
Hex	E5B9A1
RGB	229, 185, 161
RGB Percent	90%, 73%, 63%
CMY	0.1020, 0.2745, 0.3686
CMYK	0.00, 0.19, 0.30, 0.10
HSL	21°, 57%, 76%
HSV	21°, 30%, 90%
XYZ	56.0951, 53.9291, 41.1710
YIQ	195.4200, 33.9280, 1.8640

Conversions

Conversions Part 2

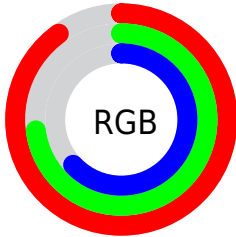
Format	Color
R _Y B	229, 198, 161
Decimal	15055265
CIE Lab	78.42, 12.42, 18.17
CIE LCh	78, 22.008, 55.647
Yxy	53.9291, 0.3710, 0.3567
Android (android.graphics.Color)	4293245345 (0xFFE5B9A1)
YUV	195.4200, -16.9691, 29.4497
Hunter-Lab	73.4365, 7.8350, 18.1655

Details

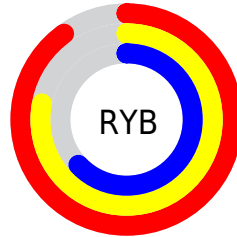
The Android color `4293245345` is a light color, and the websafe version is hex `FFCCCC`. A complement of this color would be `4288794085`, and the grayscale version is `4291085508`.

A 20% lighter version of the original color is `4294963672`, and `4289496173` is the 20% darker color. If you saturate the color by 10%, you get `4293241482`, and if you desaturate by 10%, it is `4293249208`.

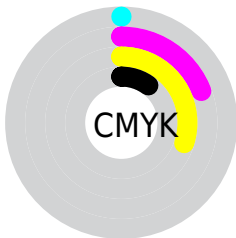
Distribution



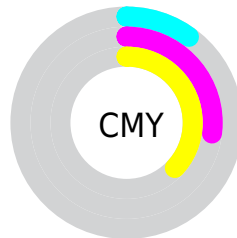
- Red (90%)
- Green (73%)
- Blue (63%)



- Red (90%)
- Yellow (78%)
- Blue (63%)



- Cyan (0%)
- Magenta (19%)
- Yellow (30%)
- Black (10%)



- Cyan (10%)
- Magenta (27%)
- Yellow (37%)

Brightness & Saturation Gradients

These gradients show how the Android color 4293245345 changes by changing the brightness by 10 percent. The first figure shows a shift by +10% for each color and the second figure -10%.

Similar to the brightness gradients but the following saturation gradients show a change of the Android color 4293245345 by changing the saturation by 10% instead.



4293245345



4293245345

4294967295



4291337863



4294963672



4289496173



4294967284



4287720277



4286009918



4284300072



4282656019



4281143552



4279107584



4278190080

 4293245345

 4293245345

 4293241482

 4293249208

 4293237619

 4293253071

 4293234012

 4293256678

 4293230149

 4293260541

 4293226287

 4293263359

 4293222424

 4293218561

 4293218560

Harmonies

Analogous

The Analogous color harmony consists of three colors that are next to each other on the color wheel.



4293702833



4293245345



4292198554

Triad

The Triadic color harmony groups three colors that are evenly spaced from another and form a triangle on the color wheel.



4293245345



4287876798



4290952935

Complementary

The Complementary color scheme is a pair of colors which are on the opposite of each other on the color wheel.



4293245345



4288794085

Split Complementary

Split-complementary colors differ from the complementary color scheme. The scheme consists of three colors, the original color and two neighbors of the complement color.



4289119722



4293245345



4287286739

Square

The Square scheme is like the rectangle color scheme, but the four colors are evenly spaced on the color wheel.



4293245345



4289186730



4287744739



4292523993

Rectangle

The Rectangle color scheme consists of four colors that form a rectangle on the color wheel.



4293245345



4291216539



4287744739



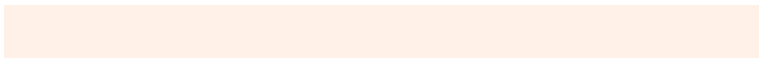
4290363625

Sweetspot

The Sweet Spot groups the original color and five complimentary colors.



4293245345



4294963432



4293239245



4286609009



4278190080



4286611584

Same Dimension

The Same Dimension uses a secret algorithm to generate beautiful new colors.



4293245345



4294952099



4293254049



4285754215



4289937152



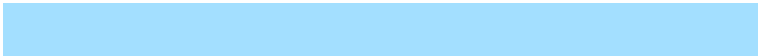
4281537024

Inverse Universe

The Inverse Universe completely reimagines the original color for something new.



4288794085



4288929791



4288785381



4284968819



4278219699



4278198579

Previews

White Background



This preview shows how the Android color 4293245345 looks on a white background.

Color Contrast Check

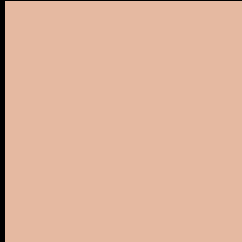
Large Text (above 18pt) WCAG AA × Fail

Any Text WCAG AA × Fail

Large Text (above 18pt) WCAG AAA × Fail

Any Text WCAG AAA × Fail

Black Background



This preview shows how the Android color 4293245345 looks on a black background.

Color Contrast Check

Large Text (above 18pt) WCAG AA ✓ Pass

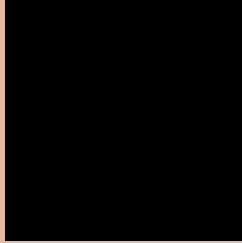
Any Text WCAG AA ✓ Pass

Large Text (above 18pt) WCAG AAA ✓ Pass

Any Text WCAG AAA ✓ Pass

If you want to check with other color combinations, try the [Color Contrast Checker](#).

Android 4293245345 Background



This preview shows how black text looks on a background with the Android color 4293245345.



This preview shows how white text looks on a background with the Android color 4293245345.

Color Blindness Simulation

Color vision deficiency is a very complex topic, and I could not describe the different causes any better than Wikipedia does, so if you want to learn more, you should check out their [article about color blindness](#).


Dichromacy



Original Color
4293245345

Protanopia
4291609253

Deuteranopia
4292983713



Tritanopia
4293506242

Trichromacy



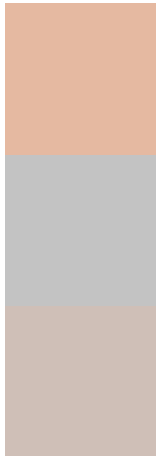
Original Color
4293245345

Protanomaly
4292198308

Deuteranomaly
4293048993

Tritanomaly
4293441206

Monochromacy



Original Color
4293245345

Achromatopsia
4291019715

Achromatomaly
4291805111

CSS Examples

Text

The CSS property to change the color of the text to Android 4293245345 is called "color". The color property can be set on classes, ids or directly on the HTML element.

This example shows how text in the color `rgb(229, 185, 161)` looks like.

```
.text, #text, p{  
    color:rgb(229, 185, 161)  
}
```

If you want to add a text shadow in that color use the text-shadow property, you can generate a text shadow directly with our [CSS Text Shadow Generator](#).

Here you see how black text with a 4 pixel rgb(229, 185, 161) colored shadow looks like.

```
.shadow{ text-shadow: 4px 4px 2px rgb(229, 185, 161) }
```

Border

The CSS property to change the border of an element to Android 4293245345 is called "border". The border property can be set on classes, ids or directly on the HTML element.

This example shows the color as border, it can be applied via the CSS property "border" or "border-color".

```
.border, #border, table{ border:4px solid rgb(229, 185, 161) }
```

If only the border color should be changed use the property `border-color`.

```
.border{ border-color:rgb(229, 185, 161) }
```

If you want to add a box shadow in that color use:

Here you see how a box with a 4 pixel `rgb(229, 185, 161)` colored shadow looks like.

```
.boxshadow{ -moz-box-shadow:4px 4px 4px  
4px rgb(229, 185, 161); -webkit-box-  
shadow:4px 4px 4px 4px rgb(229, 185, 161);  
box-shadow:4px 4px 4px 4px rgb(229, 185,  
161) }
```

Background

The CSS property to change the background color of an element to Android 4293245345 is called "background". The background property can be set on classes, ids or directly on the HTML element.

```
.background, #background, body{  
background: rgb(229, 185, 161) }
```

If only the background color should be changed can be used:

```
.background{ background-color: rgb(229,  
185, 161) }
```

This example shows the color as background, it is applied via the CSS property "background".

To optimize and compress your CSS code, you can use our [online CSS compressor and optimizer](#) based on csstidy. If you want to create a linear or radial gradient as background or border, check our [CSS Gradient Generator](#).

Hey! You found this booklet interesting? Support Converting Colors with the new Membership Option!

The pro membership hides all ads, plus gives you double the colors in the color bucket, and more awesome pro features!

[Learn more, Memberships starting at \\$2.50/m!](#)

**Follow me
on Twitter!**

@ConvertingColor