

Converting Colors

Android(4293245855)

Have a look what the booklet for
Android(4293245855) contains.

Android(4293245855)	3
<i>Conversions</i>	4
<i>Details</i>	6
<i>Harmonies</i>	11
<i>Previews</i>	23
<i>Color Blindness Simulation</i>	26
<i>CSS Examples</i>	29

Color

Android(4293245855)

Conversions

Conversions Part 1

Format	Color
Hex	E5BB9F
RGB	229, 187, 159
RGB Percent	90%, 73%, 62%
CMY	0.1020, 0.2667, 0.3765
CMYK	0.00, 0.18, 0.31, 0.10
HSL	24°, 57%, 76%
HSV	24°, 31%, 90%
XYZ	56.3414, 54.7019, 40.3899
YIQ	196.3660, 34.0200, 0.1960

Conversions

Conversions Part 2

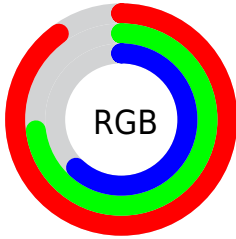
Format	Color
RYP	229, 206, 159
Decimal	15055775
CIELab	78.87, 11.10, 19.86
CIElCh	79, 22.754, 60.809
Yxy	54.7019, 0.3721, 0.3612
Android (android.graphics.Color)	4293245855 (0xFFE5BB9F)
YUV	196.3660, -18.4214, 28.6200
Hunter-Lab	73.9607, 6.5456, 19.3943

Details

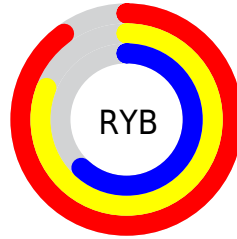
The Android color `4293245855` is a light color, and the websafe version is hex `FFCC99`. A complement of this color would be `4288661989`, and the grayscale version is `4291151301`.

A 20% lighter version of the original color is `4294964182`, and `4289496683` is the 20% darker color. If you saturate the color by 10%, you get `4293242248`, and if you desaturate by 10%, it is `4293249462`.

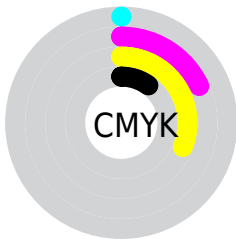
Distribution



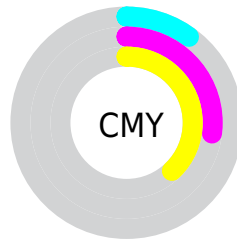
- Red (90%)
- Green (73%)
- Blue (62%)



- Red (90%)
- Yellow (81%)
- Blue (62%)



- Cyan (0%)
- Magenta (18%)
- Yellow (31%)
- Black (10%)



- Cyan (10%)
- Magenta (27%)
- Yellow (38%)

Brightness & Saturation Gradients

These gradients show how the Android color 4293245855 changes by changing the brightness by 10 percent. The first figure shows a shift by +10% for each color and the second figure -10%.

Similar to the brightness gradients but the following saturation gradients show a change of the Android color 4293245855 by changing the saturation by 10% instead.

 4293245855

 4293245855

4294967295

 4291338373

 4294964182

 4289496683

 4294967282

 4287720787

 4286010428

 4284300582

 4282656529

 4281078528

 4279173120

 4278190080

 4293245855

 4293245855

 4293242248

 4293249462

 4293238897

 4293252813

 4293235290

 4293256420

 4293231683

 4293260027

 4293228077

 4293263359

 4293224726

 4293221376

Harmonies

Analogous

The Analogous color harmony consists of three colors that are next to each other on the color wheel.



4293899951



4293245855



4292067993

Triad

The Triadic color harmony groups three colors that are evenly spaced from another and form a triangle on the color wheel.



4293245855



4287680451



4291346152

Complementary

The Complementary color scheme is a pair of colors which are on the opposite of each other on the color wheel.



4293245855



4288661989

Split Complementary

Split-complementary colors differ from the complementary color scheme. The scheme consists of three colors, the original color and two neighbors of the complement color.



4289447405



4293245855



4287221720

Square

The Square scheme is like the rectangle color scheme, but the four colors are evenly spaced on the color wheel.



4293245855



4288990638



4287876071



4292851672

Rectangle

The Rectangle color scheme consists of four colors that form a rectangle on the color wheel.



4293245855



4291085980



4287876071



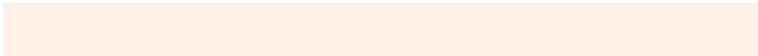
4290691307

Sweetspot

The Sweet Spot groups the original color and five complimentary colors.



4293245855



4294963688



4293238729



4286609265



4278190080



4286611584

Same Dimension

The Same Dimension uses a secret algorithm to generate beautiful new colors.



4293245855



4294952609



4293254559



4285754471



4289939200



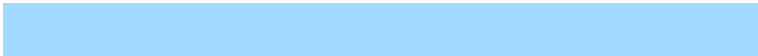
4281537536

Inverse Universe

The Inverse Universe completely reimagines the original color for something new.



4288661989



4288797183



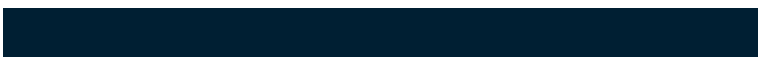
4288653029



4284968563



4278217651



4278198067

Previews

White Background



This preview shows how the Android color 4293245855 looks on a white background.

Color Contrast Check

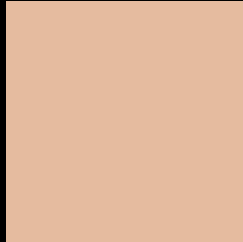
Large Text (above 18pt) WCAG AA × Fail

Any Text WCAG AA × Fail

Large Text (above 18pt) WCAG AAA × Fail

Any Text WCAG AAA × Fail

Black Background



This preview shows how the Android color 4293245855 looks on a black background.

Color Contrast Check

Large Text (above 18pt) WCAG AA ✓ Pass

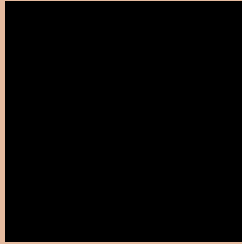
Any Text WCAG AA ✓ Pass

Large Text (above 18pt) WCAG AAA ✓ Pass

Any Text WCAG AAA ✓ Pass

If you want to check with other color combinations, try the [Color Contrast Checker](#).

Android 4293245855 Background



This preview shows how black text looks on a background with the Android color 4293245855.



This preview shows how white text looks on a background with the Android color 4293245855.

Color Blindness Simulation

Color vision deficiency is a very complex topic, and I could not describe the different causes any better than Wikipedia does, so if you want to learn more, you should check out their [article about color blindness](#).

Dichromacy

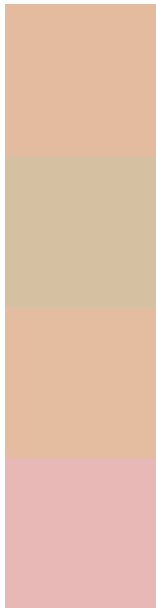


Original Color
4293245855

Protanopia
4291740579

Deuteranopia
4293115039

Trichromacy



Original Color
4293245855

Protanomaly
4292264098

Deuteranomaly
4293180575

Tritanomaly
4293441719

Monochromacy



Original Color
4293245855

Achromatopsia
4291085508

Achromatomaly
4291871159

CSS Examples

Text

The CSS property to change the color of the text to Android 4293245855 is called "color". The color property can be set on classes, ids or directly on the HTML element.

This example shows how text in the color `rgb(229, 187, 159)` looks like.

```
.text, #text, p{  
    color:rgb(229, 187, 159)  
}
```

If you want to add a text shadow in that color use the text-shadow property, you can generate a text shadow directly with our [CSS Text Shadow Generator](#).

Here you see how black text with a 4 pixel rgb(229, 187, 159) colored shadow looks like.

```
.shadow{ text-shadow: 4px 4px 2px rgb(229, 187, 159) }
```

Border

The CSS property to change the border of an element to Android 4293245855 is called "border". The border property can be set on classes, ids or directly on the HTML element.

This example shows the color as border, it can be applied via the CSS property "border" or "border-color".

```
.border, #border, table{ border:4px solid rgb(229, 187, 159) }
```

If only the border color should be changed use the property border-color.

```
.border{ border-color:rgb(229, 187, 159) }
```

If you want to add a box shadow in that color use:

Here you see how a box with a 4 pixel rgb(229, 187, 159) colored shadow looks like.

```
.boxshadow{ -moz-box-shadow:4px 4px 4px  
4px rgb(229, 187, 159); -webkit-box-  
shadow:4px 4px 4px 4px rgb(229, 187, 159);  
box-shadow:4px 4px 4px 4px rgb(229, 187,  
159) }
```

Background

The CSS property to change the background color of an element to Android 4293245855 is called "background". The background property can be set on classes, ids or directly on the HTML element.

```
.background, #background, body{  
background: rgb(229, 187, 159) }
```

If only the background color should be changed can be used:

```
.background{ background-color: rgb(229,  
187, 159) }
```

This example shows the color as background, it is applied via the CSS property "background".

To optimize and compress your CSS code, you can use our [online CSS compressor and optimizer](#) based on csstidy. If you want to create a linear or radial gradient as background or border, check our [CSS Gradient Generator](#).

Hey! You found this booklet interesting? Support Converting Colors with the new Membership Option!

The pro membership hides all ads, plus gives you double the colors in the color bucket, and more awesome pro features!

[Learn more, Memberships starting at \\$2.50/m!](#)

**Follow me
on Twitter!**

@ConvertingColor