

# Converting Colors

Android(4293247669)

Have a look what the booklet for  
Android(4293247669) contains.

<b>Android(4293247669)</b> .....	3
<b><i>Conversions</i></b> .....	4
<b><i>Details</i></b> .....	6
<b><i>Harmonies</i></b> .....	11
<b><i>Previews</i></b> .....	23
<b><i>Color Blindness Simulation</i></b> .....	26
<b><i>CSS Examples</i></b> .....	29

# **Color**

**Android(4293247669)**

# Conversions

## Conversions Part 1

<b>Format</b>	<b>Color</b>
Hex	E5C2B5
RGB	229, 194, 181
RGB Percent	90%, 76%, 71%
CMY	0.1020, 0.2392, 0.2902
CMYK	0.00, 0.15, 0.21, 0.10
HSL	16°, 48%, 80%
HSV	16°, 21%, 90%
XYZ	59.9454, 58.5778, 51.8632
YIQ	202.9830, 25.0330, 3.3770

# Conversions

## Conversions Part 2

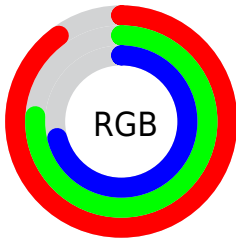
Format	Color
R <sub>Y</sub> B	229, 199, 181
Decimal	15057589
CIE Lab	81.06, 10.43, 11.15
CIE LCh	81, 15.268, 46.909
Yxy	58.5778, 0.3518, 0.3438
Android (android.graphics.Color)	4293247669 (0xFFE5C2B5)
YUV	202.9830, -10.8376, 22.8169
Hunter-Lab	76.5361, 5.8683, 13.3986

# Details

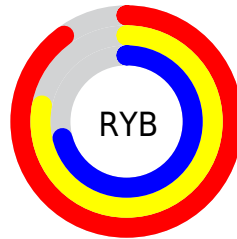
The Android color `4293247669` is a light color, and the websafe version is hex `FFCCCC`. A complement of this color would be `4290107621`, and the grayscale version is `4291546059`.

A 20% lighter version of the original color is `4294966253`, and `4289563776` is the 20% darker color. If you saturate the color by 10%, you get `4293243294`, and if you desaturate by 10%, it is `4293252044`.

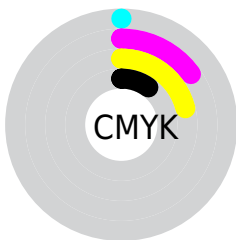
# Distribution



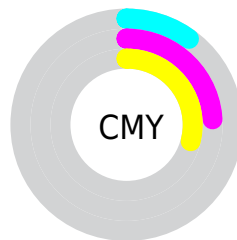
- Red (90%)
- Green (76%)
- Blue (71%)



- Red (90%)
- Yellow (78%)
- Blue (71%)



- Cyan (0%)
- Magenta (15%)
- Yellow (21%)
- Black (10%)



- Cyan (10%)
- Magenta (24%)
- Yellow (29%)

# Brightness & Saturation Gradients

These gradients show how the Android color 4293247669 changes by changing the brightness by 10 percent. The first figure shows a shift by +10% for each color and the second figure -10%.

Similar to the brightness gradients but the following saturation gradients show a change of the Android color 4293247669 by changing the saturation by 10% instead.



 4293247669

 4293247669

4294967295

 4291405722

 4294966253


 4289563776

 4287787879

 4286077519

 4284367672

 4282788899

 4281276429

 4279894016

 4278190080

 4293247669

 4293247669

 4293243294

 4293252044

 4293239175

 4293256163

 4293234800

 4293260538

 4293230425

 4293263359

 4293226306

 4293221932

 4293217557

 4293213696

# Harmonies

## Analogous

The Analogous color harmony consists of three colors that are next to each other on the color wheel.



4293443778



4293247669



4292593326

# Triad

The Triadic color harmony groups three colors that are evenly spaced from another and form a triangle on the color wheel.



4293247669



4289581506



4291086564

# Complementary

The Complementary color scheme is a pair of colors which are on the opposite of each other on the color wheel.



4293247669



4290107621

# Split Complementary

Split-complementary colors differ from the complementary color scheme. The scheme consists of three colors, the original color and two neighbors of the complement color.



4289973477



4293247669



4289057489

# Square

The Square scheme is like the rectangle color scheme, but the four colors are evenly spaced on the color wheel.



4293247669



4290564021



4289188062



4292264925

# Rectangle

The Rectangle color scheme consists of four colors that form a rectangle on the color wheel.



4293247669



4291938733



4289188062



4290693605

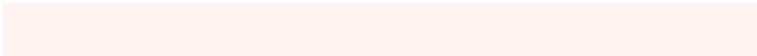


# Sweetspot

The Sweet Spot groups the original color and five complimentary colors.



4293247669



4294964464



4293244376



4286609783



4278190080



4286611584



# Same Dimension

The Same Dimension uses a secret algorithm to generate beautiful new colors.



4293247669



4294955455



4293253813



4285753959



4289933312



4281536000

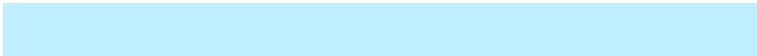


# Inverse Universe

The Inverse Universe completely reimagines the original color for something new.



4290107621



4290768639



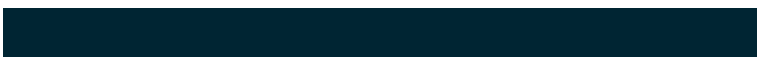
4290101477



4284969075



4278223539

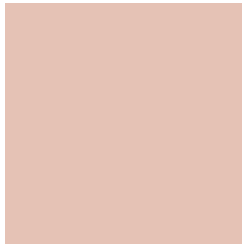


4278199603



# Previews

## White Background



This preview shows how the Android color 4293247669 looks on a white background.

## Color Contrast Check

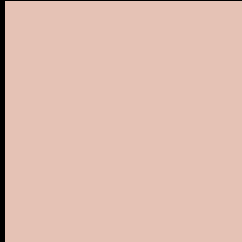
Large Text (above 18pt) WCAG AA × Fail

Any Text WCAG AA × Fail

Large Text (above 18pt) WCAG AAA × Fail

Any Text WCAG AAA × Fail

# Black Background



This preview shows how the Android color 4293247669 looks on a black background.

## Color Contrast Check

Large Text (above 18pt) WCAG AA ✓ Pass

Any Text WCAG AA ✓ Pass

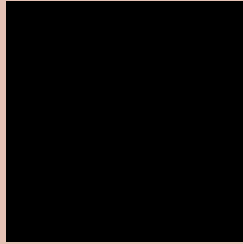
Large Text (above 18pt) WCAG AAA ✓ Pass

Any Text WCAG AAA ✓ Pass

If you want to check with other color combinations, try the [Color Contrast Checker](#).



# Android 4293247669 Background



This preview shows how black text looks on a background with the Android color 4293247669.




This preview shows how white text looks on a background with the Android color 4293247669.

# Color Blindness Simulation

Color vision deficiency is a very complex topic, and I could not describe the different causes any better than Wikipedia does, so if you want to learn more, you should check out their [article about color blindness](#).

## Dichromacy





**Tritanopia**  
4293443277

# Trichromacy



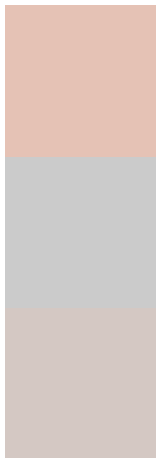
**Original Color**  
4293247669

**Protanomaly**  
4292396728

**Deuteranomaly**  
4293182133

**Tritanomaly**  
4293377988

# Monochromacy



**Original Color**  
4293247669

**Achromatopsia**  
4291546059

**Achromatomaly**  
4292135107

# CSS Examples

## Text

The CSS property to change the color of the text to Android 4293247669 is called "color". The color property can be set on classes, ids or directly on the HTML element.

This example shows how text in the color `rgb(229, 194, 181)` looks like.

```
.text, #text, p{  
    color:rgb(229, 194, 181)  
}
```

If you want to add a text shadow in that color use the text-shadow property, you can generate a text shadow directly with our [CSS Text Shadow Generator](#).

Here you see how black text with a 4 pixel rgb(229, 194, 181) colored shadow looks like.

```
.shadow{ text-shadow: 4px 4px 2px rgb(229, 194, 181) }
```

## Border

The CSS property to change the border of an element to Android 4293247669 is called "border". The border property can be set on classes, ids or directly on the HTML element.

This example shows the color as border, it can be applied via the CSS property "border" or "border-color".

```
.border, #border, table{ border:4px solid rgb(229, 194, 181) }
```

If only the border color should be changed use the property `border-color`.

```
.border{ border-color:rgb(229, 194, 181) }
```

If you want to add a box shadow in that color use:

Here you see how a box with a 4 pixel `rgb(229, 194, 181)` colored shadow looks like.

```
.boxshadow{ -moz-box-shadow:4px 4px 4px  
4px rgb(229, 194, 181); -webkit-box-  
shadow:4px 4px 4px 4px rgb(229, 194, 181);  
box-shadow:4px 4px 4px 4px rgb(229, 194,  
181) }
```

# Background

The CSS property to change the background color of an element to Android 4293247669 is called "background". The background property can be set on classes, ids or directly on the HTML element.

```
.background, #background, body{  
background: rgb(229, 194, 181) }
```

If only the background color should be changed can be used:

```
.background{ background-color: rgb(229,  
194, 181) }
```

This example shows the color as background, it is applied via the CSS property "background".

To optimize and compress your CSS code, you can use our [online CSS compressor and optimizer](#) based on csstidy. If you want to create a linear or radial gradient as background or border, check our [CSS Gradient Generator](#).



Hey! You found this booklet interesting? Support Converting Colors with the new Membership Option!

The pro membership hides all ads, plus gives you double the colors in the color bucket, and more awesome pro features!

**[Learn more, Memberships starting at \\$2.50/m!](#)**

**Follow me  
on Twitter!**

@ConvertingColor