

# Converting Colors

Android(4293250003)

Have a look what the booklet for  
Android(4293250003) contains.

<b>Android(4293250003)</b> .....	3
<i><b>Conversions</b></i> .....	4
<i><b>Details</b></i> .....	6
<i><b>Harmonies</b></i> .....	11
<i><b>Previews</b></i> .....	23
<i><b>Color Blindness Simulation</b></i> .....	26
<i><b>CSS Examples</b></i> .....	29

# **Color**

**Android(4293250003)**

# Conversions

## Conversions Part 1

Format	Color
Hex	E5CBD3
RGB	229, 203, 211
RGB Percent	90%, 80%, 83%
CMY	0.1020, 0.2039, 0.1725
CMYK	0.00, 0.11, 0.08, 0.10
HSL	342°, 33%, 85%
HSV	342°, 11%, 90%
XYZ	65.4269, 64.0730, 70.5470
YIQ	211.6860, 12.9280, 8.0000

# Conversions

## Conversions Part 2

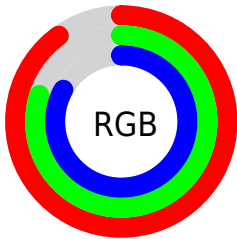
<b>Format</b>	<b>Color</b>
R <sub>Y</sub> B	229, 203, 211
Decimal	15059923
CIE Lab	84.00, 10.43, -0.64
CIE LCh	84, 10.447, 356.476
Yxy	64.0730, 0.3271, 0.3203
Android (android.graphics.Color)	4293250003 (0xFFE5CBD3)
YUV	211.6860, -0.3382, 15.1844
Hunter-Lab	80.0456, 5.8207, 3.7776

# Details

The Android color `4293250003` is a light color, and the websafe version is hex `CCCCCC`. A complement of this color would be `4291552733`, and the grayscale version is `4292138196`.

A 20% lighter version of the original color is `4294967295`, and `4289566109` is the 20% darker color. If you saturate the color by 10%, you get `4293244099`, and if you desaturate by 10%, it is `4293255907`.

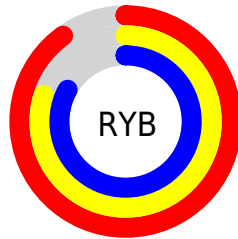
# Distribution



Red (90%)

Green (80%)

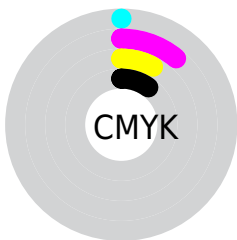
Blue (83%)



Red (90%)

Yellow (80%)

Blue (83%)

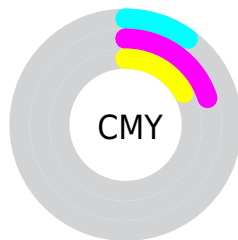


Cyan (0%)

Magenta (11%)

Yellow (8%)

Black (10%)



Cyan (10%)

Magenta (20%)

Yellow (17%)

# Brightness & Saturation Gradients

These gradients show how the Android color 4293250003 changes by changing the brightness by 10 percent. The first figure shows a shift by +10% for each color and the second figure -10%.

Similar to the brightness gradients but the following saturation gradients show a change of the Android color 4293250003 by changing the saturation by 10% instead.



 4293250003

 4293250003

4294967295

 4291408055

 4289566109

 4287855490

 4286145129

 4284500561

 4282922042

 4281409061

 4280092432

 4278190080

 4293250003

 4293250003

 4293244099

 4293255907

 4293238195

 4293261811

 4293232291

 4293263359

 4293226388

 4293220740

 4293214836

 4293208932

 4293203028

 4293197894

# Harmonies

## Analogous

The Analogous color harmony consists of three colors that are next to each other on the color wheel.



4292726236



4293250003



4293381065

# Triad

The Triadic color harmony groups three colors that are evenly spaced from another and form a triangle on the color wheel.



4293250003



4291876032



4290631138

# Complementary

The Complementary color scheme is a pair of colors which are on the opposite of each other on the color wheel.



4293250003



4291552733

# Split Complementary

Split-complementary colors differ from the complementary color scheme. The scheme consists of three colors, the original color and two neighbors of the complement color.



4290369498



4293250003



4291155654

# Square

The Square scheme is like the rectangle color scheme, but the four colors are evenly spaced on the color wheel.



4293250003



4292595902



4290566096



4291220453

# Rectangle

The Rectangle color scheme consists of four colors that form a rectangle on the color wheel.



4293250003



4293250244



4290566096



4290500319

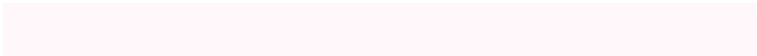


# Sweetspot

The Sweet Spot groups the original color and five complimentary colors.



4293250003



4294965242



4292725733



4286610044



4278190080



4286611584



# Same Dimension

The Same Dimension uses a secret algorithm to generate beautiful new colors.



4293250003



4294958054



4293251275



4285753195



4289921079



4281532432



# Inverse Universe

The Inverse Universe completely reimagines the original color for something new.



4293250003



4294958054



4291551461



4285753195



4289921079

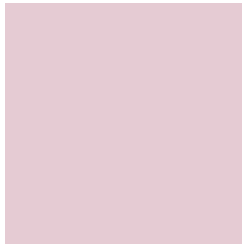


4281532432



# Previews

## White Background



This preview shows how the Android color 4293250003 looks on a white background.

## Color Contrast Check

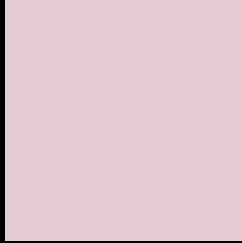
Large Text (above 18pt) WCAG AA × Fail

Any Text WCAG AA × Fail

Large Text (above 18pt) WCAG AAA × Fail

Any Text WCAG AAA × Fail

# Black Background



This preview shows how the Android color 4293250003 looks on a black background.

## Color Contrast Check

Large Text (above 18pt) WCAG AA ✓ Pass

Any Text WCAG AA ✓ Pass

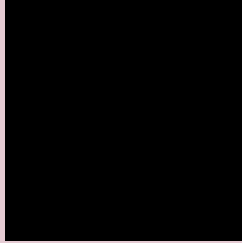
Large Text (above 18pt) WCAG AAA ✓ Pass

Any Text WCAG AAA ✓ Pass

If you want to check with other color combinations, try the [Color Contrast Checker](#).



# Android 4293250003 Background



This preview shows how black text looks on a background with the Android color 4293250003.

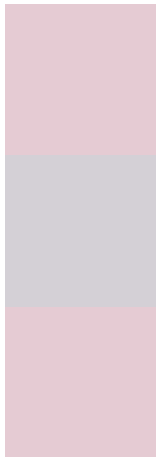


This preview shows how white text looks on a background with the Android color 4293250003.

# Color Blindness Simulation

Color vision deficiency is a very complex topic, and I could not describe the different causes any better than Wikipedia does, so if you want to learn more, you should check out their [article about color blindness](#).

## Dichromacy



**Original Color**  
4293250003

**Protanopia**  
4292137174

**Deuteranopia**  
4293250003



**Tritanopia**  
4293315290

# Trichromacy



**Original Color**  
4293250003

**Protanomaly**  
4292529877

**Deuteranomaly**  
4293250003

**Tritanomaly**  
4293315287

# Monochromacy



**Original Color**  
4293250003

**Achromatopsia**  
4292138196

**Achromatomaly**  
4292530644

# CSS Examples

## Text

The CSS property to change the color of the text to Android 4293250003 is called "color". The color property can be set on classes, ids or directly on the HTML element.

This example shows how text in the color `rgb(229, 203, 211)` looks like.

```
.text, #text, p{  
    color:rgb(229, 203, 211)  
}
```

If you want to add a text shadow in that color use the text-shadow property, you can generate a text shadow directly with our [CSS Text Shadow Generator](#).

Here you see how black text with a 4 pixel rgb(229, 203, 211) colored shadow looks like.

```
.shadow{ text-shadow: 4px 4px 2px rgb(229, 203, 211) }
```

## Border

The CSS property to change the border of an element to Android 4293250003 is called "border". The border property can be set on classes, ids or directly on the HTML element.

This example shows the color as border, it can be applied via the CSS property "border" or "border-color".

```
.border, #border, table{ border:4px solid rgb(229, 203, 211) }
```

If only the border color should be changed use the property `border-color`.

```
.border{ border-color:rgb(229, 203, 211) }
```

If you want to add a box shadow in that color use:

Here you see how a box with a 4 pixel `rgb(229, 203, 211)` colored shadow looks like.

```
.boxshadow{ -moz-box-shadow:4px 4px 4px  
4px rgb(229, 203, 211); -webkit-box-  
shadow:4px 4px 4px 4px rgb(229, 203, 211);  
box-shadow:4px 4px 4px 4px rgb(229, 203,  
211) }
```

# Background

The CSS property to change the background color of an element to Android 4293250003 is called "background". The background property can be set on classes, ids or directly on the HTML element.

```
.background, #background, body{  
background: rgb(229, 203, 211) }
```

If only the background color should be changed can be used:

```
.background{ background-color: rgb(229,  
203, 211) }
```

This example shows the color as background, it is applied via the CSS property "background".

To optimize and compress your CSS code, you can use our [online CSS compressor and optimizer](#) based on csstidy. If you want to create a linear or radial gradient as background or border, check our [CSS Gradient Generator](#).



Hey! You found this booklet interesting? Support Converting Colors with the new Membership Option!

The pro membership hides all ads, plus gives you double the colors in the color bucket, and more awesome pro features!

**[Learn more, Memberships starting at \\$2.50/m!](#)**

**Follow me  
on Twitter!**

@ConvertingColor