

Converting Colors

Android(4293251524)

Have a look what the booklet for
Android(4293251524) contains.

Android(4293251524)	3
<i>Conversions</i>	4
<i>Details</i>	6
<i>Harmonies</i>	11
<i>Previews</i>	23
<i>Color Blindness Simulation</i>	26
<i>CSS Examples</i>	29

Color

Android(4293251524)

Conversions

Conversions Part 1

Format	Color
Hex	E5D1C4
RGB	229, 209, 196
RGB Percent	90%, 82%, 77%
CMY	0.1020, 0.1804, 0.2314
CMYK	0.00, 0.09, 0.14, 0.10
HSL	24°, 39%, 83%
HSV	24°, 14%, 90%
XYZ	65.0774, 66.2445, 61.5811
YIQ	213.4980, 16.0930, 0.1970

Conversions

Conversions Part 2

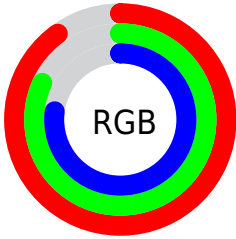
Format	Color
R _Y B	229, 217, 196
Decimal	15061444
CIE Lab	85.12, 4.82, 8.95
CIE LCh	85, 10.168, 61.674
Yxy	66.2445, 0.3374, 0.3434
Android (android.graphics.Color)	4293251524 (0xFFE5D1C4)
YUV	213.4980, -8.6265, 13.5953
Hunter-Lab	81.3907, 0.2891, 12.1141

Details

The Android color `4293251524` is a light color, and the websafe version is hex `CCCCCC`. A complement of this color would be `4291090661`, and the grayscale version is `4292269782`.

A 20% lighter version of the original color is `4294967293`, and `4289567630` is the 20% darker color. If you saturate the color by 10%, you get `4293247917`, and if you desaturate by 10%, it is `4293255131`.

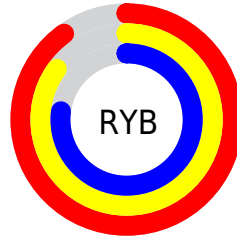
Distribution



Red (90%)

Green (82%)

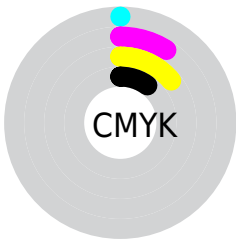
Blue (77%)



Red (90%)

Yellow (85%)

Blue (77%)

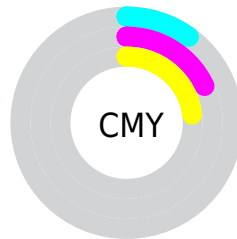


Cyan (0%)

Magenta (9%)

Yellow (14%)

Black (10%)



Cyan (10%)

Magenta (18%)

Yellow (23%)

Brightness & Saturation Gradients

These gradients show how the Android color 4293251524 changes by changing the brightness by 10 percent. The first figure shows a shift by +10% for each color and the second figure -10%.

Similar to the brightness gradients but the following saturation gradients show a change of the Android color 4293251524 by changing the saturation by 10% instead.

 4293251524

 4293251524

4294967295

 4291409321

4294967293

 4289567630

 4287857013

 4286146652

 4284502085

 4282923310

 4281410330

 4280094208

 4278190080

 4293251524

 4293251524

 4293247917

 4293255131

 4293244310

 4293258738

 4293240703

 4293262335

 4293237096

 4293263359

 4293233746

 4293230139

 4293226532

 4293222925

 4293220864

Harmonies

Analogous

The Analogous color harmony consists of three colors that are next to each other on the color wheel.



4293513163



4293251524



4292662466

Triad

The Triadic color harmony groups three colors that are evenly spaced from another and form a triangle on the color wheel.



4293251524



4290763477



4292334309

Complementary

The Complementary color scheme is a pair of colors which are on the opposite of each other on the color wheel.



4293251524



4291090661

Split Complementary

Split-complementary colors differ from the complementary color scheme. The scheme consists of three colors, the original color and two neighbors of the complement color.



4291548648



4293251524



4290632414

Square

The Square scheme is like the rectangle color scheme, but the four colors are evenly spaced on the color wheel.



4293251524



4291287499



4290959589



4293054430

Rectangle

The Rectangle color scheme consists of four colors that form a rectangle on the color wheel.



4293251524



4292204227



4290959589



4292072422

Sweetspot

The Sweet Spot groups the original color and five complimentary colors.



4293251524



4294965749



4293248216



4286610553



4278190080



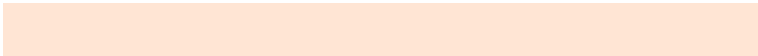
4286611584

Same Dimension

The Same Dimension uses a secret algorithm to generate beautiful new colors.



4293251524



4294960596



4293255620



4285754471



4289938944



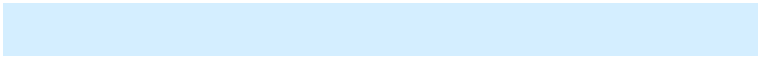
4281537536

Inverse Universe

The Inverse Universe completely reimagines the original color for something new.



4291090661



4292144895



4291086565



4284968563



4278217907



4278198067

Previews

White Background



This preview shows how the Android color 4293251524 looks on a white background.

Color Contrast Check

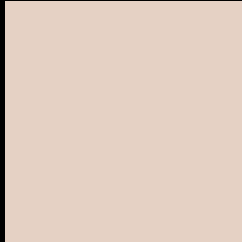
Large Text (above 18pt) WCAG AA × Fail

Any Text WCAG AA × Fail

Large Text (above 18pt) WCAG AAA × Fail

Any Text WCAG AAA × Fail

Black Background



This preview shows how the Android color 4293251524 looks on a black background.

Color Contrast Check

Large Text (above 18pt) WCAG AA ✓ Pass

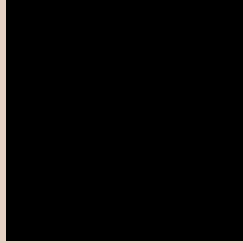
Any Text WCAG AA ✓ Pass

Large Text (above 18pt) WCAG AAA ✓ Pass

Any Text WCAG AAA ✓ Pass

If you want to check with other color combinations, try the [Color Contrast Checker](#).

Android 4293251524 Background



This preview shows how black text looks on a background with the Android color 4293251524.



This preview shows how white text looks on a background with the Android color 4293251524.

Color Blindness Simulation

Color vision deficiency is a very complex topic, and I could not describe the different causes any better than Wikipedia does, so if you want to learn more, you should check out their [article about color blindness](#).

Dichromacy





Tritanopia
4293447133

Trichromacy



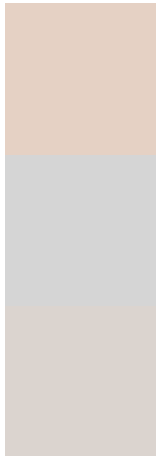
Original Color
4293251524

Protanomaly
4292858821

Deuteranomaly
4293643973

Tritanomaly
4293381844

Monochromacy



Original Color
4293251524

Achromatopsia
4292203989

Achromatomaly
4292596943

CSS Examples

Text

The CSS property to change the color of the text to Android 4293251524 is called "color". The color property can be set on classes, ids or directly on the HTML element.

This example shows how text in the color `rgb(229, 209, 196)` looks like.

```
.text, #text, p{  
    color:rgb(229, 209, 196)  
}
```

If you want to add a text shadow in that color use the text-shadow property, you can generate a text shadow directly with our [CSS Text Shadow Generator](#).

Here you see how black text with a 4 pixel rgb(229, 209, 196) colored shadow looks like.

```
.shadow{ text-shadow: 4px 4px 2px rgb(229, 209, 196) }
```

Border

The CSS property to change the border of an element to Android 4293251524 is called "border". The border property can be set on classes, ids or directly on the HTML element.

This example shows the color as border, it can be applied via the CSS property "border" or "border-color".

```
.border, #border, table{ border:4px solid rgb(229, 209, 196) }
```

If only the border color should be changed use the property `border-color`.

```
.border{ border-color:rgb(229, 209, 196) }
```

If you want to add a box shadow in that color use:

Here you see how a box with a 4 pixel `rgb(229, 209, 196)` colored shadow looks like.

```
.boxshadow{ -moz-box-shadow:4px 4px 4px  
4px rgb(229, 209, 196); -webkit-box-  
shadow:4px 4px 4px 4px rgb(229, 209, 196);  
box-shadow:4px 4px 4px 4px rgb(229, 209,  
196) }
```

Background

The CSS property to change the background color of an element to Android 4293251524 is called "background". The background property can be set on classes, ids or directly on the HTML element.

```
.background, #background, body{  
background: rgb(229, 209, 196) }
```

If only the background color should be changed can be used:

```
.background{ background-color: rgb(229,  
209, 196) }
```

This example shows the color as background, it is applied via the CSS property "background".

To optimize and compress your CSS code, you can use our [online CSS compressor and optimizer](#) based on csstidy. If you want to create a linear or radial gradient as background or border, check our [CSS Gradient Generator](#).

Hey! You found this booklet interesting? Support Converting Colors with the new Membership Option!

The pro membership hides all ads, plus gives you double the colors in the color bucket, and more awesome pro features!

[Learn more, Memberships starting at \\$2.50/m!](#)

**Follow me
on Twitter!**

@ConvertingColor