

# Converting Colors

Android(4293252827)

Have a look what the booklet for  
Android(4293252827) contains.

<b>Android(4293252827)</b> .....	3
<b><i>Conversions</i></b> .....	4
<b><i>Details</i></b> .....	6
<b><i>Harmonies</i></b> .....	11
<b><i>Previews</i></b> .....	23
<b><i>Color Blindness Simulation</i></b> .....	26
<b><i>CSS Examples</i></b> .....	29

# **Color**

**Android(4293252827)**

# Conversions

## Conversions Part 1

Format	Color
Hex	E5D6DB
RGB	229, 214, 219
RGB Percent	90%, 84%, 86%
CMY	0.1020, 0.1608, 0.1412
CMYK	0.00, 0.07, 0.04, 0.10
HSL	340°, 22%, 87%
HSV	340°, 7%, 90%
XYZ	69.1458, 69.8656, 76.8589
YIQ	219.0550, 7.3350, 4.7350

# Conversions

## Conversions Part 2

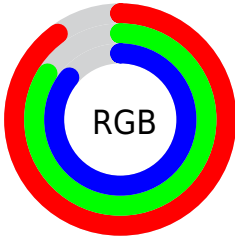
<b>Format</b>	<b>Color</b>
R <sub>Y</sub> B	229, 214, 219
Decimal	15062747
CIE Lab	86.93, 6.02, -0.61
CIE LCh	87, 6.052, 354.216
Yxy	69.8656, 0.3203, 0.3236
Android (android.graphics.Color)	4293252827 (0xFFE5D6DB)
YUV	219.0550, -0.0271, 8.7218
Hunter-Lab	83.5857, 1.3884, 3.9915

# Details

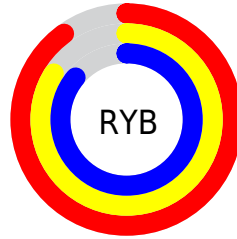
The Android color `4293252827` is a light color, and the websafe version is hex `CCCCCC`. A complement of this color would be `4292273632`, and the grayscale version is `4292598747`.

A 20% lighter version of the original color is `4294967295`, and `4289634212` is the 20% darker color. If you saturate the color by 10%, you get `4293246924`, and if you desaturate by 10%, it is `4293258730`.

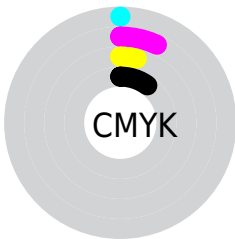
# Distribution



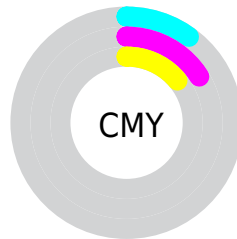
- Red (90%)
- Green (84%)
- Blue (86%)



- Red (90%)
- Yellow (84%)
- Blue (86%)



- Cyan (0%)
- Magenta (7%)
- Yellow (4%)
- Black (10%)



- Cyan (10%)
- Magenta (16%)
- Yellow (14%)

# Brightness & Saturation Gradients

These gradients show how the Android color 4293252827 changes by changing the brightness by 10 percent. The first figure shows a shift by +10% for each color and the second figure -10%.

Similar to the brightness gradients but the following saturation gradients show a change of the Android color 4293252827 by changing the saturation by 10% instead.



 4293252827

 4293252827

4294967295

 4291410623

 4289634212

 4287858058

 4286147696

 4284503128

 4282989889

 4281476907

 4280095254

 4278190080

 4293252827

 4293252827

 4293246924

 4293258730

 4293241020

 4293263354

 4293235117

 4293263359

 4293229214

 4293223567

 4293217663

 4293211760

 4293205857

 4293199954

# Harmonies

## Analogous

The Analogous color harmony consists of three colors that are next to each other on the color wheel.



4292925408



4293252827



4293383893

# Triad

The Triadic color harmony groups three colors that are evenly spaced from another and form a triangle on the color wheel.



4293252827



4292467663



4291747043

# Complementary

The Complementary color scheme is a pair of colors which are on the opposite of each other on the color wheel.



4293252827



4292273632

# Split Complementary

Split-complementary colors differ from the complementary color scheme. The scheme consists of three colors, the original color and two neighbors of the complement color.



4291616222



4293252827



4292074707

# Square

The Square scheme is like the rectangle color scheme, but the four colors are evenly spaced on the color wheel.



4293252827



4292925902



4291747288



4292074213

# Rectangle

The Rectangle color scheme consists of four colors that form a rectangle on the color wheel.



4293252827



4293318610



4291747288



4291681761



# Sweetspot

The Sweet Spot groups the original color and five complimentary colors.



4293252827



4294966012



4292925157



4286610814



4278190080



4286611584



# Same Dimension

The Same Dimension uses a secret algorithm to generate beautiful new colors.



4293252827



4294962161



4293253590



4285753195



4289921083



4281532433



# Inverse Universe

The Inverse Universe completely reimagines the original color for something new.



4293252827



4294962161



4292273125



4285753195



4289921084

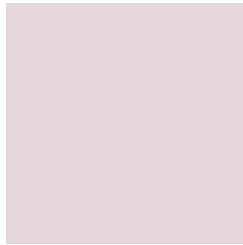


4281532433



# Previews

## White Background



This preview shows how the Android color 4293252827 looks on a white background.

## Color Contrast Check

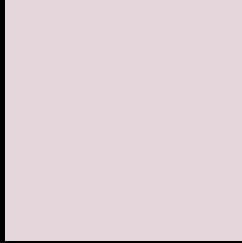
Large Text (above 18pt) WCAG AA × Fail

Any Text WCAG AA × Fail

Large Text (above 18pt) WCAG AAA × Fail

Any Text WCAG AAA × Fail

# Black Background



This preview shows how the Android color 4293252827 looks on a black background.

## Color Contrast Check

Large Text (above 18pt) WCAG AA ✓ Pass

Any Text WCAG AA ✓ Pass

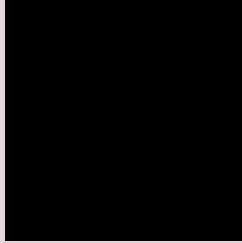
Large Text (above 18pt) WCAG AAA ✓ Pass

Any Text WCAG AAA ✓ Pass

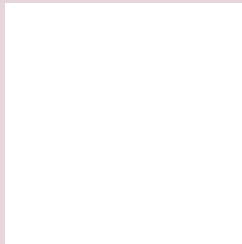
If you want to check with other color combinations, try the [Color Contrast Checker](#).



# Android 4293252827 Background



This preview shows how black text looks on a background with the Android color 4293252827.

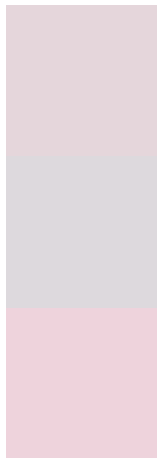


This preview shows how white text looks on a background with the Android color 4293252827.

# Color Blindness Simulation

Color vision deficiency is a very complex topic, and I could not describe the different causes any better than Wikipedia does, so if you want to learn more, you should check out their [article about color blindness](#).

## Dichromacy



**Original Color**  
4293252827

**Protanopia**  
4292729309

**Deuteranopia**  
4293841884



**Tritanopia**  
4293317861

# Trichromacy



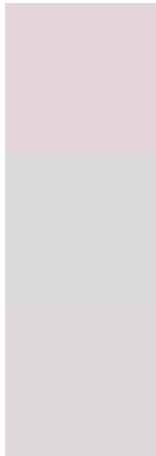
**Original Color**  
4293252827

**Protanomaly**  
4292925660

**Deuteranomaly**  
4293645532

**Tritanomaly**  
4293318113

# Monochromacy



**Original Color**  
4293252827

**Achromatopsia**  
4292598747

**Achromatomaly**  
4292860379

# CSS Examples

## Text

The CSS property to change the color of the text to Android 4293252827 is called "color". The color property can be set on classes, ids or directly on the HTML element.

This example shows how text in the color `rgb(229, 214, 219)` looks like.

```
.text, #text, p{  
    color:rgb(229, 214, 219)  
}
```

If you want to add a text shadow in that color use the text-shadow property, you can generate a text shadow directly with our [CSS Text Shadow Generator](#).

Here you see how black text with a 4 pixel rgb(229, 214, 219) colored shadow looks like.

```
.shadow{ text-shadow: 4px 4px 2px rgb(229, 214, 219) }
```

## Border

The CSS property to change the border of an element to Android 4293252827 is called "border". The border property can be set on classes, ids or directly on the HTML element.

This example shows the color as border, it can be applied via the CSS property "border" or "border-color".

```
.border, #border, table{ border:4px solid rgb(229, 214, 219) }
```

If only the border color should be changed use the property `border-color`.

```
.border{ border-color:rgb(229, 214, 219) }
```

If you want to add a box shadow in that color use:

Here you see how a box with a 4 pixel `rgb(229, 214, 219)` colored shadow looks like.

```
.boxshadow{ -moz-box-shadow:4px 4px 4px  
4px rgb(229, 214, 219); -webkit-box-  
shadow:4px 4px 4px 4px rgb(229, 214, 219);  
box-shadow:4px 4px 4px 4px rgb(229, 214,  
219) }
```

# Background

The CSS property to change the background color of an element to Android 4293252827 is called "background". The background property can be set on classes, ids or directly on the HTML element.

```
.background, #background, body{  
background: rgb(229, 214, 219) }
```

If only the background color should be changed can be used:

```
.background{ background-color: rgb(229,  
214, 219) }
```

This example shows the color as background, it is applied via the CSS property "background".

To optimize and compress your CSS code, you can use our [online CSS compressor and optimizer](#) based on csstidy. If you want to create a linear or radial gradient as background or border, check our [CSS Gradient Generator](#).



Hey! You found this booklet interesting? Support Converting Colors with the new Membership Option!

The pro membership hides all ads, plus gives you double the colors in the color bucket, and more awesome pro features!

**[Learn more, Memberships starting at \\$2.50/m!](#)**

**Follow me  
on Twitter!**

@ConvertingColor