

# Converting Colors

Android(4293273973)

Have a look what the booklet for  
Android(4293273973) contains.

<b>Android(4293273973)</b> .....	3
<i><b>Conversions</b></i> .....	4
<i><b>Details</b></i> .....	6
<i><b>Harmonies</b></i> .....	11
<i><b>Previews</b></i> .....	23
<i><b>Color Blindness Simulation</b></i> .....	26
<i><b>CSS Examples</b></i> .....	29

# Color

**Android(4293273973)**

# Conversions

## Conversions Part 1

<b>Format</b>	<b>Color</b>
Hex	E62975
RGB	230, 41, 117
RGB Percent	90%, 16%, 46%
CMY	0.0980, 0.8392, 0.5412
CMYK	0.00, 0.82, 0.49, 0.10
HSL	336°, 79%, 53%
HSV	336°, 82%, 90%
XYZ	36.6370, 19.6932, 18.6998
YIQ	106.1750, 88.2480, 63.7040

# Conversions

## Conversions Part 2

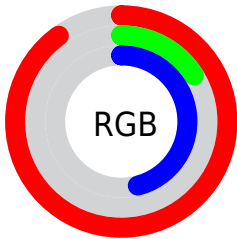
<b>Format</b>	<b>Color</b>
<b>R<sub>YB</sub></b>	230, 41, 117
Decimal	15083893
CIE <sub>Lab</sub>	51.49, 72.99, 5.19
CIE <sub>LCh</sub>	51, 73.170, 4.067
Yxy	19.6932, 0.4883, 0.2625
Android (android.graphics.Color)	4293273973 (0xFFE62975)
YUV	106.1750, 5.3367, 108.5945
Hunter-Lab	44.3770, 69.7068, 6.0800

# Details

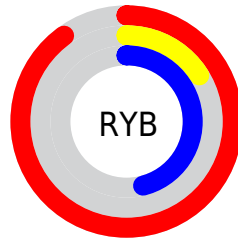
The Android color **4293273973** is a dark color, and the websafe version is hex **CC0066**. The color can be described as dark washed rose. A complement of this color would be **4280936090**, and the grayscale version is **4285164138**.

A 20% lighter version of the original color is **4294929577**, and **4289200197** is the 20% darker color. If you saturate the color by 10%, you get **4293268071**, and if you desaturate by 10%, it is **4293279875**.

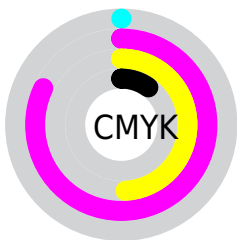
# Distribution



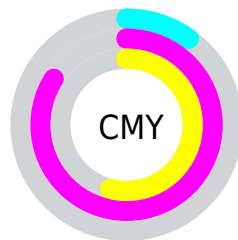
- Red (90%)
- Green (16%)
- Blue (46%)



- Red (90%)
- Yellow (16%)
- Blue (46%)



- Cyan (0%)
- Magenta (82%)
- Yellow (49%)
- Black (10%)



- Cyan (10%)
- Magenta (84%)
- Yellow (54%)

# Brightness & Saturation Gradients

These gradients show how the Android color 4293273973 changes by changing the brightness by 10 percent. The first figure shows a shift by +10% for each color and the second figure -10%.

Similar to the brightness gradients but the following saturation gradients show a change of the Android color 4293273973 by changing the saturation by 10% instead.





4293273973



4293273973

4294967295



4291231837



4294929577



4289200197



4294937284



4287168559



4294944992



4285202459



4294952444



4283367427



4294960127



4281270274



4278190080



4293273973



4293273973



4293268071



4293279875

 4293263452

 4293285777

 4293291678

 4293297580

 4293303482

 4293309384

 4293315285

 4293321187

 4293327089

# Harmonies

## Analogous

The Analogous color harmony consists of three colors that are next to each other on the color wheel.



4291510707



4293273973



4292821048

# Triad

The Triadic color harmony groups three colors that are evenly spaced from another and form a triangle on the color wheel.



4293273973



4283140608



4278226924

# Complementary

The Complementary color scheme is a pair of colors which are on the opposite of each other on the color wheel.



4293273973



4280936090

# Split Complementary

Split-complementary colors differ from the complementary color scheme. The scheme consists of three colors, the original color and two neighbors of the complement color.



4278228416



4293273973



4278227520

# Square

The Square scheme is like the rectangle color scheme, but the four colors are evenly spaced on the color wheel.



4293273973



4287462144



4278228610



4278223097

# Rectangle

The Rectangle color scheme consists of four colors that form a rectangle on the color wheel.



4293273973



4291581704



4278228610



4278227680



# Sweetspot

The Sweet Spot groups the original color and five complimentary colors.



4293273973



4294950873



4288096742



4286601577



4278190080



4286611584



# Same Dimension

The Same Dimension uses a secret algorithm to generate beautiful new colors.



4293273973



4294902632



4293277993



4285753196



4289921096



4281532437



# Inverse Universe

The Inverse Universe completely reimagines the original color for something new.



4293273973



4294902632



4280932070



4285753196



4289921096



4281532437



# Previews

## White Background



This preview shows how the Android color 4293273973 looks on a white background.

## Color Contrast Check

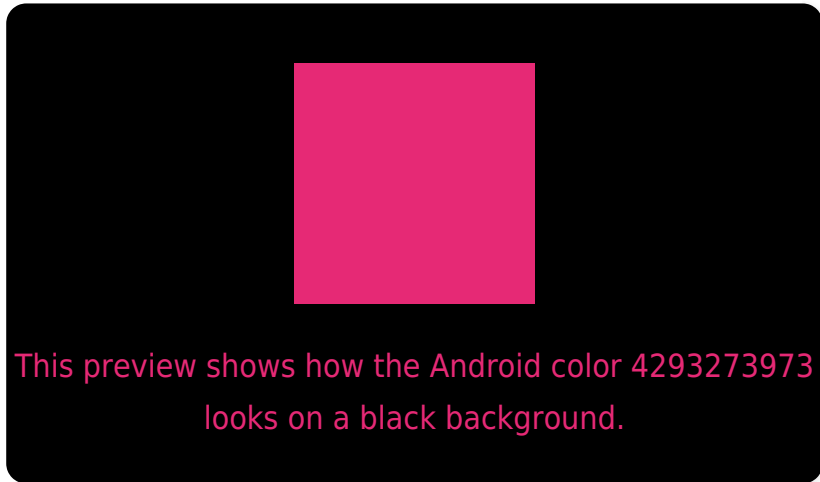
Large Text (above 18pt) WCAG AA ✓ Pass

Any Text WCAG AA ✗ Fail

Large Text (above 18pt) WCAG AAA ✗ Fail

Any Text WCAG AAA ✗ Fail

# Black Background



## Color Contrast Check

Large Text (above 18pt) WCAG AA ✓ Pass

Any Text WCAG AA ✓ Pass

Large Text (above 18pt) WCAG AAA ✓ Pass

Any Text WCAG AAA × Fail

If you want to check with other color combinations, try the [Color Contrast Checker](#).



# Android 4293273973 Background



This preview shows how black text looks on a background with the Android color 4293273973.



This preview shows how white text looks on a background with the Android color 4293273973.

# Color Blindness Simulation

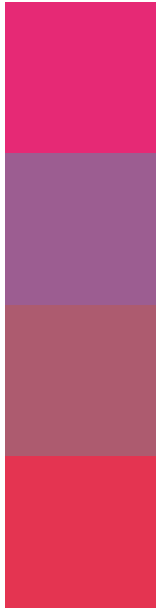
Color vision deficiency is a very complex topic, and I could not describe the different causes any better than Wikipedia does, so if you want to learn more, you should check out their [article about color blindness](#).

## Dichromacy





# Trichromacy



**Original Color**  
4293273973

**Protanomaly**  
4288437649

**Deuteranomaly**  
4289551215

**Tritanomaly**  
4293145681

# Monochromacy



**Original Color**  
4293273973

**Achromatopsia**  
4285164138

**Achromatomaly**  
4288107118

# CSS Examples

## Text

The CSS property to change the color of the text to Android 4293273973 is called "color". The color property can be set on classes, ids or directly on the HTML element.

This example shows how text in the color `rgb(230, 41, 117)` looks like.

```
.text, #text, p{  
    color:rgb(230, 41, 117)  
}
```

If you want to add a text shadow in that color use the text-shadow property, you can generate a text shadow directly with our [CSS Text Shadow Generator](#).

Here you see how black text with a 4 pixel rgb(230, 41, 117) colored shadow looks like.

```
.shadow{ text-shadow: 4px 4px 2px rgb(230, 41, 117) }
```

## Border

The CSS property to change the border of an element to Android 4293273973 is called "border". The border property can be set on classes, ids or directly on the HTML element.

This example shows the color as border, it can be applied via the CSS property "border" or "border-color".

```
.border, #border, table{ border:4px solid rgb(230, 41, 117) }
```

If only the border color should be changed use the property `border-color`.

```
.border{ border-color:rgb(230, 41, 117) }
```

If you want to add a box shadow in that color use:

Here you see how a box with a 4 pixel `rgb(230, 41, 117)` colored shadow looks like.

```
.boxshadow{ -moz-box-shadow:4px 4px 4px  
4px rgb(230, 41, 117); -webkit-box-  
shadow:4px 4px 4px 4px rgb(230, 41, 117);  
box-shadow:4px 4px 4px 4px rgb(230, 41,  
117) }
```

# Background

The CSS property to change the background color of an element to Android 4293273973 is called "background". The background property can be set on classes, ids or directly on the HTML element.

```
.background, #background, body{  
background: rgb(230, 41, 117) }
```

If only the background color should be changed can be used:

```
.background{ background-color: rgb(230, 41,  
117) }
```

This example shows the color as background, it is applied via the CSS property "background".

To optimize and compress your CSS code, you can use our [online CSS compressor and optimizer](#) based on csstidy. If you want to create a linear or radial gradient as background or border, check our [CSS Gradient Generator](#).



Hey! You found this booklet interesting? Support Converting Colors with the new Membership Option!

The pro membership hides all ads, plus gives you double the colors in the color bucket, and more awesome pro features!

**[Learn more, Memberships starting at \\$2.50/m!](#)**

**Follow me  
on Twitter!**

@ConvertingColor