

Converting Colors

Android(4293277030)

Have a look what the booklet for
Android(4293277030) contains.

Android(4293277030)	3
<i>Conversions</i>	4
<i>Details</i>	6
<i>Harmonies</i>	11
<i>Previews</i>	23
<i>Color Blindness Simulation</i>	26
<i>CSS Examples</i>	29

Color

Android(4293277030)

Conversions

Conversions Part 1

Format	Color
Hex	E63566
RGB	230, 53, 102
RGB Percent	90%, 21%, 40%
CMY	0.0980, 0.7922, 0.6000
CMYK	0.00, 0.77, 0.56, 0.10
HSL	343°, 78%, 55%
HSV	343°, 77%, 90%
XYZ	36.3045, 20.3285, 14.5807
YIQ	111.5090, 89.7630, 52.7630

Conversions

Conversions Part 2

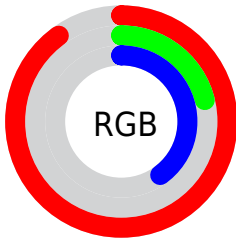
Format	Color
R_{YB}	230, 53, 102
Decimal	15086950
CIE _{Lab}	52.21, 68.79, 15.28
CIE _{LCh}	52, 70.462, 12.521
Yxy	20.3285, 0.5098, 0.2855
Android (android.graphics.Color)	4293277030 (0xFFE63566)
YUV	111.5090, -4.6879, 103.9166
Hunter-Lab	45.0871, 64.8270, 12.3872

Details

The Android color **4293277030** is a dark color, and the websafe version is hex **FF3366**. The color can be described as dark washed rose. A complement of this color would be **4281722549**, and the grayscale version is **4285493103**.

A 20% lighter version of the original color is **4294931353**, and **4289200184** is the 20% darker color. If you saturate the color by 10%, you get **4293271125**, and if you desaturate by 10%, it is **4293282935**.

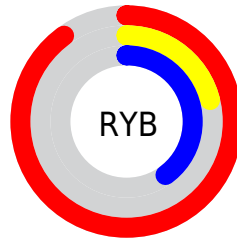
Distribution



Red (90%)

Green (21%)

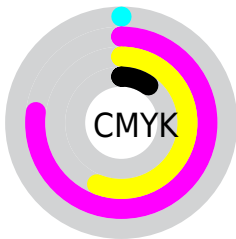
Blue (40%)



Red (90%)

Yellow (21%)

Blue (40%)

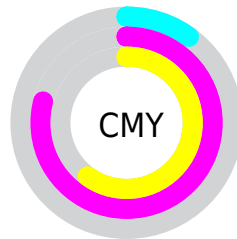


Cyan (0%)

Magenta (77%)

Yellow (56%)

Black (10%)



Cyan (10%)

Magenta (79%)

Yellow (60%)

Brightness & Saturation Gradients

These gradients show how the Android color 4293277030 changes by changing the brightness by 10 percent. The first figure shows a shift by +10% for each color and the second figure -10%.

Similar to the brightness gradients but the following saturation gradients show a change of the Android color 4293277030 by changing the saturation by 10% instead.

 4293277030

 4293277030

4294967295

 4291231822

 4294931353

 4289200184

 4294938803

 4287168547

 4294946511

 4285202446

 4294953963

 4283236355

 4294961663

 4281204738

 4278190080

 4293277030

 4293277030

 4293271125

 4293282935

 4293265221

 4293288839

 4293263424

 4293294744

 4293300649

 4293306553

 4293312458

 4293318362

 4293324267

 4293328892

Harmonies

Analogous

The Analogous color harmony consists of three colors that are next to each other on the color wheel.



4292165538



4293277030



4292366124

Triad

The Triadic color harmony groups three colors that are evenly spaced from another and form a triangle on the color wheel.



4293277030



4281765649



4278226416

Complementary

The Complementary color scheme is a pair of colors which are on the opposite of each other on the color wheel.



4293277030



4281722549

Split Complementary

Split-complementary colors differ from the complementary color scheme. The scheme consists of three colors, the original color and two neighbors of the complement color.



4278228429



4293277030



4278228310

Square

The Square scheme is like the rectangle color scheme, but the four colors are evenly spaced on the color wheel.



4293277030



4286546432



4278228885



4278222068

Rectangle

The Rectangle color scheme consists of four colors that form a rectangle on the color wheel.



4293277030



4290863872



4278228885



4278227432

Sweetspot

The Sweet Spot groups the original color and five complimentary colors.



4293277030



4294952149



4290000358



4286602342



4278190080



4286611584

Same Dimension

The Same Dimension uses a secret algorithm to generate beautiful new colors.



4293277030



4294906965



4293286709



4285753194



4289921073



4281532430

Inverse Universe

The Inverse Universe completely reimagines the original color for something new.



4293277030



4294906965



4281712870



4285753194



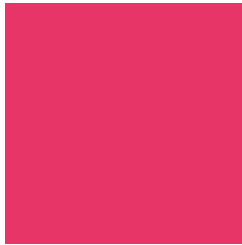
4289921073



4281532430

Previews

White Background



This preview shows how the Android color 4293277030 looks on a white background.

Color Contrast Check

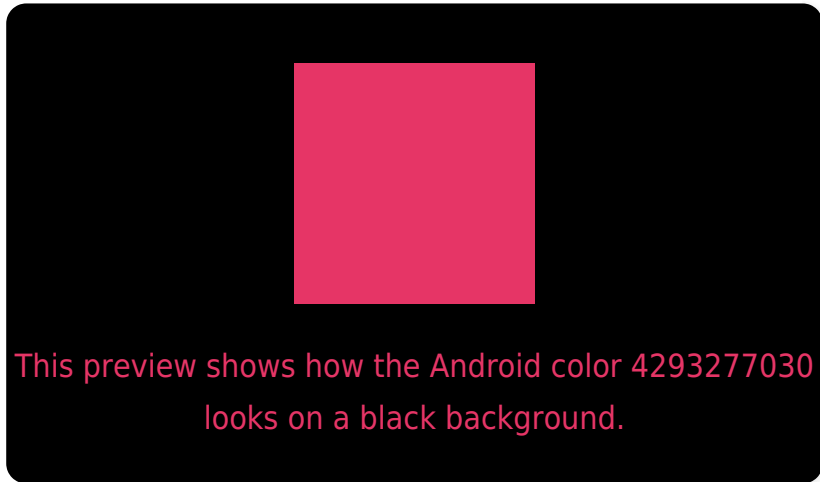
Large Text (above 18pt) WCAG AA ✓ Pass

Any Text WCAG AA ✗ Fail

Large Text (above 18pt) WCAG AAA ✗ Fail

Any Text WCAG AAA ✗ Fail

Black Background



Color Contrast Check

Large Text (above 18pt) WCAG AA ✓ Pass

Any Text WCAG AA ✓ Pass

Large Text (above 18pt) WCAG AAA ✓ Pass

Any Text WCAG AAA × Fail

If you want to check with other color combinations, try the [Color Contrast Checker](#).

Android 4293277030 Background



This preview shows how black text looks on a background with the Android color 4293277030.

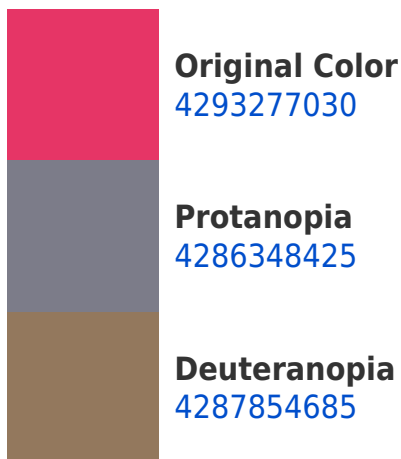


This preview shows how white text looks on a background with the Android color 4293277030.

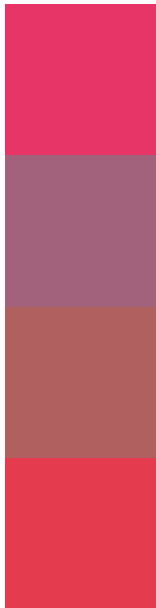
Color Blindness Simulation

Color vision deficiency is a very complex topic, and I could not describe the different causes any better than Wikipedia does, so if you want to learn more, you should check out their [article about color blindness](#).

Dichromacy



Trichromacy



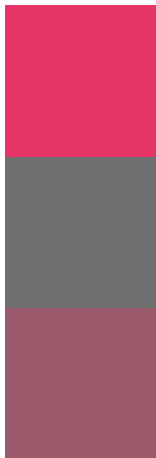
Original Color
4293277030

Protanomaly
4288897660

Deuteranomaly
4289814624

Tritanomaly
4293213006

Monochromacy



Original Color
4293277030

Achromatopsia
4285558896

Achromatomaly
4288371564

CSS Examples

Text

The CSS property to change the color of the text to Android 4293277030 is called "color". The color property can be set on classes, ids or directly on the HTML element.

This example shows how text in the color `rgb(230, 53, 102)` looks like.

```
.text, #text, p{  
    color:rgb(230, 53, 102)  
}
```

If you want to add a text shadow in that color use the text-shadow property, you can generate a text shadow directly with our [CSS Text Shadow Generator](#).

Here you see how black text with a 4 pixel rgb(230, 53, 102) colored shadow looks like.

```
.shadow{ text-shadow: 4px 4px 2px rgb(230, 53, 102) }
```

Border

The CSS property to change the border of an element to Android 4293277030 is called "border". The border property can be set on classes, ids or directly on the HTML element.

This example shows the color as border, it can be applied via the CSS property "border" or "border-color".

```
.border, #border, table{ border:4px solid rgb(230, 53, 102) }
```

If only the border color should be changed use the property border-color.

```
.border{ border-color:rgb(230, 53, 102) }
```

If you want to add a box shadow in that color use:

Here you see how a box with a 4 pixel rgb(230, 53, 102) colored shadow looks like.

```
.boxshadow{ -moz-box-shadow:4px 4px 4px  
4px rgb(230, 53, 102); -webkit-box-  
shadow:4px 4px 4px 4px rgb(230, 53, 102);  
box-shadow:4px 4px 4px 4px rgb(230, 53,  
102) }
```

Background

The CSS property to change the background color of an element to Android 4293277030 is called "background". The background property can be set on classes, ids or directly on the HTML element.

```
.background, #background, body{  
background: rgb(230, 53, 102) }
```

If only the background color should be changed can be used:

```
.background{ background-color: rgb(230, 53,  
102) }
```

This example shows the color as background, it is applied via the CSS property "background".

To optimize and compress your CSS code, you can use our [online CSS compressor and optimizer](#) based on csstidy. If you want to create a linear or radial gradient as background or border, check our [CSS Gradient Generator](#).

Hey! You found this booklet interesting? Support Converting Colors with the new Membership Option!

The pro membership hides all ads, plus gives you double the colors in the color bucket, and more awesome pro features!

[Learn more, Memberships starting at \\$2.50/m!](#)

**Follow me
on Twitter!**

@ConvertingColor