

# Converting Colors

Android(4293279081)

Have a look what the booklet for  
Android(4293279081) contains.

<b>Android(4293279081)</b> .....	3
<b><i>Conversions</i></b> .....	4
<b><i>Details</i></b> .....	6
<b><i>Harmonies</i></b> .....	11
<b><i>Previews</i></b> .....	23
<b><i>Color Blindness Simulation</i></b> .....	26
<b><i>CSS Examples</i></b> .....	29

# Color

**Android(4293279081)**

# Conversions

## Conversions Part 1

Format	Color
Hex	E63D69
RGB	230, 61, 105
RGB Percent	90%, 24%, 41%
CMY	0.0980, 0.7608, 0.5882
CMYK	0.00, 0.73, 0.54, 0.10
HSL	344°, 77%, 57%
HSV	344°, 73%, 90%
XYZ	36.8517, 21.1804, 15.5105
YIQ	116.5470, 86.6000, 49.5120

# Conversions

## Conversions Part 2

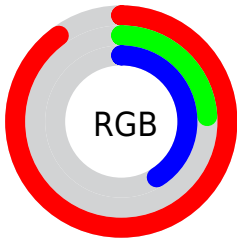
<b>Format</b>	<b>Color</b>
<b>R<sub>YB</sub></b>	230, 61, 105
Decimal	15089001
CIE <sub>Lab</sub>	53.15, 66.55, 14.77
CIE <sub>LCh</sub>	53, 68.168, 12.510
Yxy	21.1804, 0.5011, 0.2880
Android (android.graphics.Color)	4293279081 (0xFFE63D69)
YUV	116.5470, -5.6927, 99.4983
Hunter-Lab	46.0222, 62.3928, 12.2334

# Details

The Android color **4293279081** is a dark color, and the websafe version is hex **CC3366**. The color can be described as dark washed rose. A complement of this color would be **4282246842**, and the grayscale version is **4285887861**.

A 20% lighter version of the original color is **4294932892**, and **4289200186** is the 20% darker color. If you saturate the color by 10%, you get **4293273176**, and if you desaturate by 10%, it is **4293284986**.

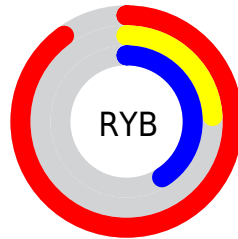
# Distribution



Red (90%)

Green (24%)

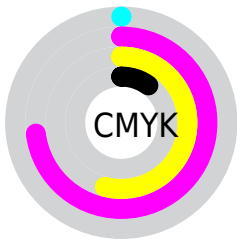
Blue (41%)



Red (90%)

Yellow (24%)

Blue (41%)

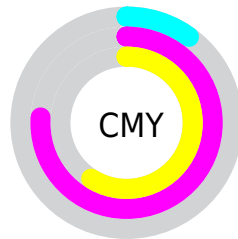


Cyan (0%)

Magenta (73%)

Yellow (54%)

Black (10%)



Cyan (10%)

Magenta (76%)

Yellow (59%)

# Brightness & Saturation Gradients

These gradients show how the Android color 4293279081 changes by changing the brightness by 10 percent. The first figure shows a shift by +10% for each color and the second figure -10%.

Similar to the brightness gradients but the following saturation gradients show a change of the Android color 4293279081 by changing the saturation by 10% instead.



 4293279081

 4293279081

4294967295

 4291237201

 4294932892

 4289200186

 4294940343

 4287168549

 4294947794

 4285202449

 4294955246

 4283301890

 4294962943

 4281335810

 4278190080

 4293279081

 4293279081

 4293273176

 4293284986

 4293267271

 4293290891

 4293263420

 4293296796

 4293302701

 4293308606

 4293314511

 4293320416

 4293326321

 4293328895

# Harmonies

## Analogous

The Analogous color harmony consists of three colors that are next to each other on the color wheel.



4292167076



4293279081



4292367409

# Triad

The Triadic color harmony groups three colors that are evenly spaced from another and form a triangle on the color wheel.



4293279081



4282224923



4278226927

# Complementary

The Complementary color scheme is a pair of colors which are on the opposite of each other on the color wheel.



4293279081



4282246842

# Split Complementary

Split-complementary colors differ from the complementary color scheme. The scheme consists of three colors, the original color and two neighbors of the complement color.



4278228941



4293279081



4278228825

# Square

The Square scheme is like the rectangle color scheme, but the four colors are evenly spaced on the color wheel.



4293279081



4286743552



4278229399



4278222578

# Rectangle

The Rectangle color scheme consists of four colors that form a rectangle on the color wheel.



4293279081



4290930436



4278229399



4278227943



# Sweetspot

The Sweet Spot groups the original color and five complimentary colors.



4293279081



4294952918



4290330086



4286602855



4278190080



4286611584



# Same Dimension

The Same Dimension uses a secret algorithm to generate beautiful new colors.



4293279081



4294909785



4293289021



4285753194



4289921070



4281532429



# Inverse Universe

The Inverse Universe completely reimagines the original color for something new.



4293279081



4294909785



4282236902



4285753194



4289921070

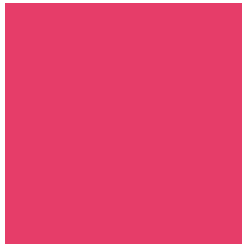


4281532429



# Previews

## White Background



This preview shows how the Android color 4293279081 looks on a white background.

## Color Contrast Check

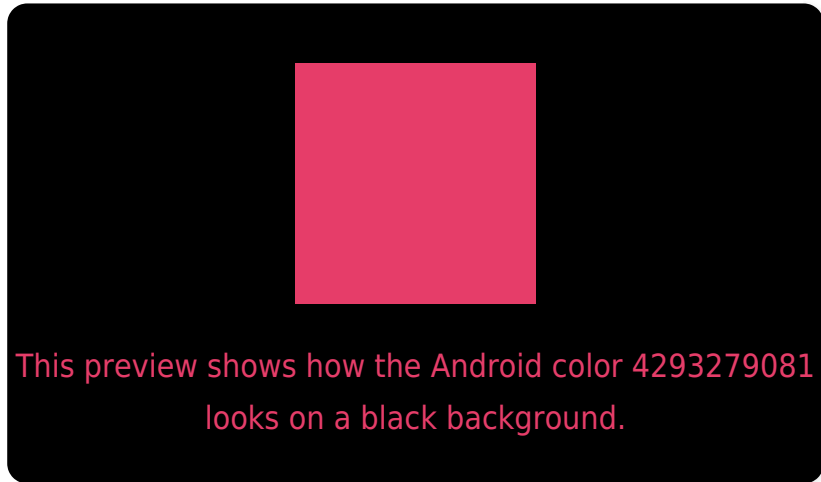
Large Text (above 18pt) WCAG AA ✓ Pass

Any Text WCAG AA ✗ Fail

Large Text (above 18pt) WCAG AAA ✗ Fail

Any Text WCAG AAA ✗ Fail

# Black Background



## Color Contrast Check

Large Text (above 18pt) WCAG AA ✓ Pass

Any Text WCAG AA ✓ Pass

Large Text (above 18pt) WCAG AAA ✓ Pass

Any Text WCAG AAA × Fail

If you want to check with other color combinations, try the [Color Contrast Checker](#).



# Android 4293279081 Background



This preview shows how black text looks on a background with the Android color 4293279081.

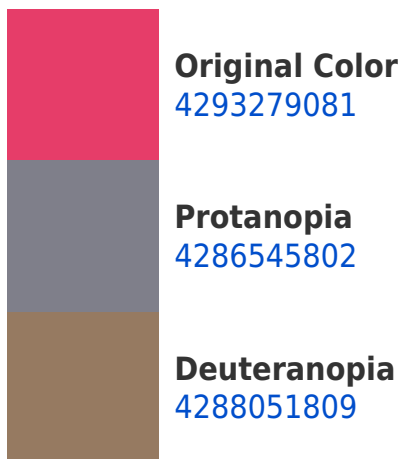


This preview shows how white text looks on a background with the Android color 4293279081.

# Color Blindness Simulation

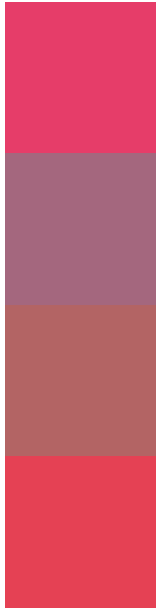
Color vision deficiency is a very complex topic, and I could not describe the different causes any better than Wikipedia does, so if you want to learn more, you should check out their [article about color blindness](#).

## Dichromacy





# Trichromacy



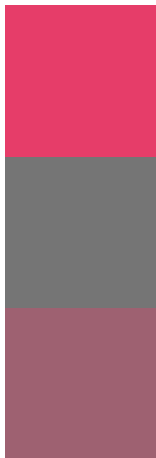
**Original Color**  
4293279081

**Protanomaly**  
4288964478

**Deuteranomaly**  
4289946724

**Tritanomaly**  
4293214548

# Monochromacy



**Original Color**  
4293279081

**Achromatopsia**  
4285887861

**Achromatomaly**  
4288569713

# CSS Examples

## Text

The CSS property to change the color of the text to Android 4293279081 is called "color". The color property can be set on classes, ids or directly on the HTML element.

This example shows how text in the color `rgb(230, 61, 105)` looks like.

```
.text, #text, p{  
    color:rgb(230, 61, 105)  
}
```

If you want to add a text shadow in that color use the text-shadow property, you can generate a text shadow directly with our [CSS Text Shadow Generator](#).

Here you see how black text with a 4 pixel rgb(230, 61, 105) colored shadow looks like.

```
.shadow{ text-shadow: 4px 4px 2px rgb(230, 61, 105) }
```

## Border

The CSS property to change the border of an element to Android 4293279081 is called "border". The border property can be set on classes, ids or directly on the HTML element.

This example shows the color as border, it can be applied via the CSS property "border" or "border-color".

```
.border, #border, table{ border:4px solid rgb(230, 61, 105) }
```

If only the border color should be changed use the property `border-color`.

```
.border{ border-color:rgb(230, 61, 105) }
```

If you want to add a box shadow in that color use:

Here you see how a box with a 4 pixel `rgb(230, 61, 105)` colored shadow looks like.

```
.boxshadow{ -moz-box-shadow:4px 4px 4px  
4px rgb(230, 61, 105); -webkit-box-  
shadow:4px 4px 4px 4px rgb(230, 61, 105);  
box-shadow:4px 4px 4px 4px rgb(230, 61,  
105) }
```

# Background

The CSS property to change the background color of an element to Android 4293279081 is called "background". The background property can be set on classes, ids or directly on the HTML element.

```
.background, #background, body{  
background: rgb(230, 61, 105) }
```

If only the background color should be changed can be used:

```
.background{ background-color: rgb(230, 61,  
105) }
```

This example shows the color as background, it is applied via the CSS property "background".

To optimize and compress your CSS code, you can use our [online CSS compressor and optimizer](#) based on csstidy. If you want to create a linear or radial gradient as background or border, check our [CSS Gradient Generator](#).



Hey! You found this booklet interesting? Support Converting Colors with the new Membership Option!

The pro membership hides all ads, plus gives you double the colors in the color bucket, and more awesome pro features!

**[Learn more, Memberships starting at \\$2.50/m!](#)**

**Follow me  
on Twitter!**

@ConvertingColor